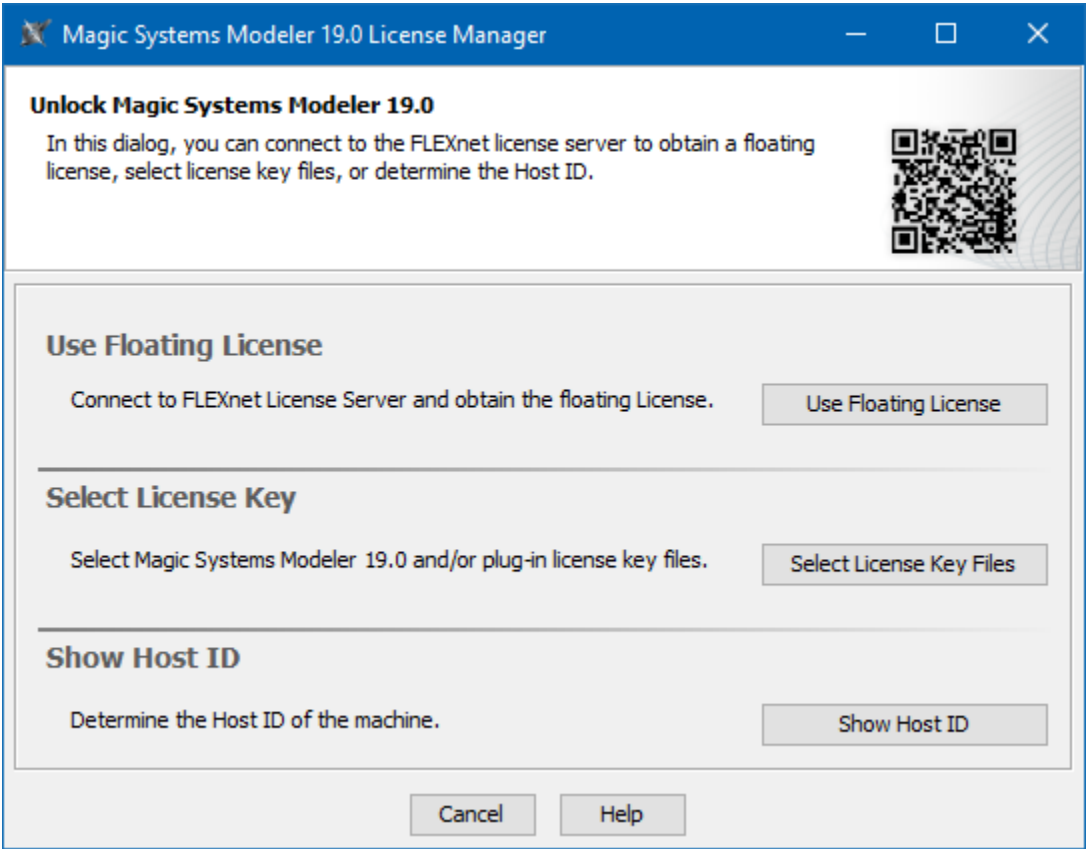


# License Manager dialog

There are two ways to view the **License Manager** dialog:

- Starting the modeling tool for the very first time.
- Opening the dialog from the modeling tool's **Help** menu.

You will see the following dialog:



The MSM License Manager dialog

In this dialog, you can select one of the license addition options according to the license you have.

Button	Description
Use Floating License	If you have a Floating (Shareable) license, click the button to <a href="#">obtain a floating license for a modeling tool</a> .
Select License Key	If you have a Seat (Nodelock), click the button to add license key files.
Show Host ID	Determine the Host ID of your machine to be able to tie it with the license.