

# 19.0 LTR SP4 Version News



Released on: June 29, 2020

The new release presents significant **Licensing, Installation, and Other Changes**. What is more, it brings improvements to the **Project Statistics** tool.

As for Collaborative modeling, users can now handle conflicts by **Resolving Conflicting Changes Automatically in Merge**. Additionally, major **Memory Consumption Improvements in Merge** have been made.

Last but not least, a number of key issues detected in earlier versions, including those affecting modeling tool performance, has been fixed.

Download Cameo System Modeler today at [nomagic.com](http://nomagic.com), or contact your sales representative. And please don't forget to give us your feedback on [LinkedIn](#), [Twitter](#) or [Facebook](#). Also, please check the [documentation](#) and additional [resources](#).

## Modeling and Infrastructure

- [Licensing, Installation, and Other Changes](#)
- [Project Statistics](#)

## Collaboration

- [Resolving Conflicting Changes Automatically in Merge](#)
- [Memory Consumption Improvements in Merge](#)

## Other Features

- [Report Wizard](#)
- [Key Issues Fixed](#)

## Modeling and Infrastructure

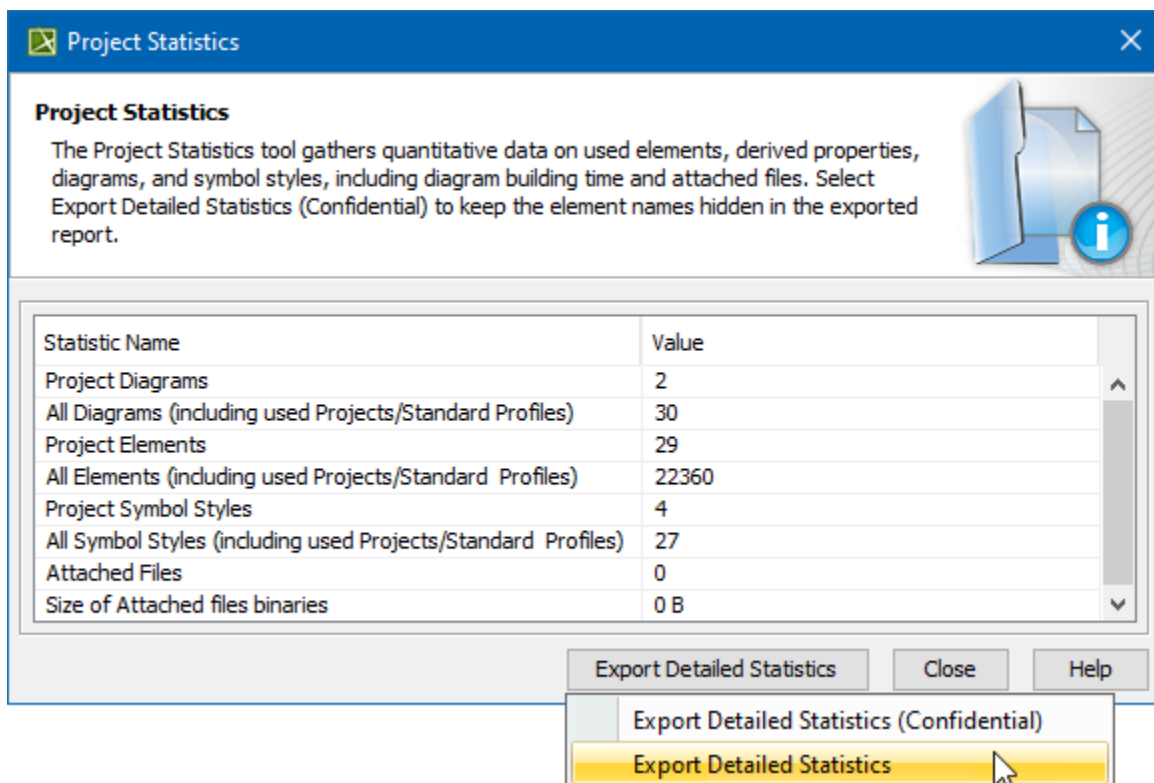
### Licensing, Installation, and Other Changes

The 19.0 SP4 release introduces important changes that affect licensing, installation, and other services you use directly from the modeling tool.

[Learn more about the implemented changes >>](#)

### Project Statistics

You can now contribute to improving the performance of the modeling tool and modeling experience. All you need to do is to export the Project Statistics report that is based on the quantitative data collected from your project and then share it with us.



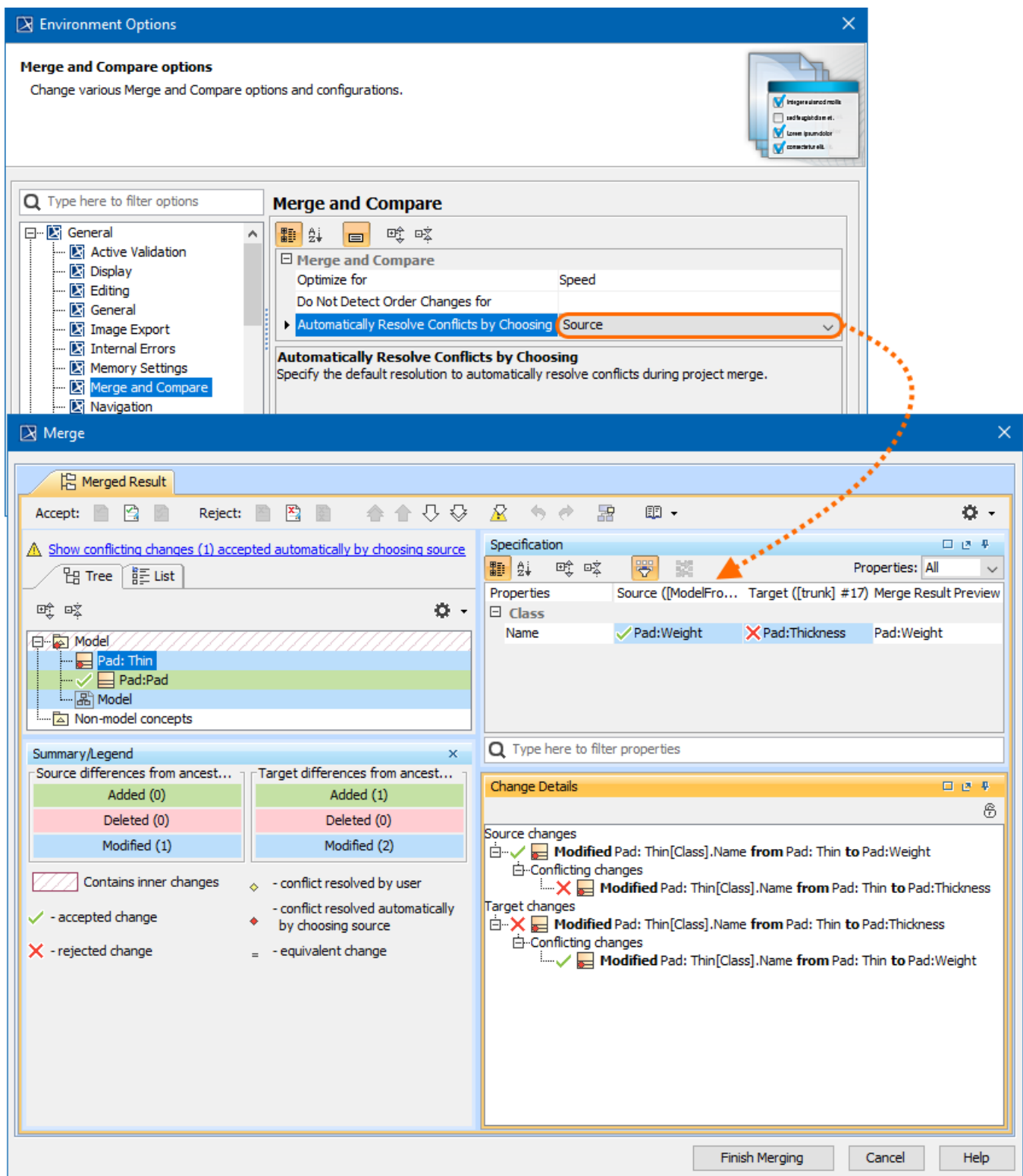
Exporting project statistics

[Learn more about Project Statistics >>](#)

Collaboration

## Resolving Conflicting Changes Automatically in Merge

Handle Merge conflicts more efficiently by tailoring the Merge behavior to your needs! From now on, in the **Environment** options dialog, you can specify either the Source or Target to be the default resolution when dealing with conflicting changes.

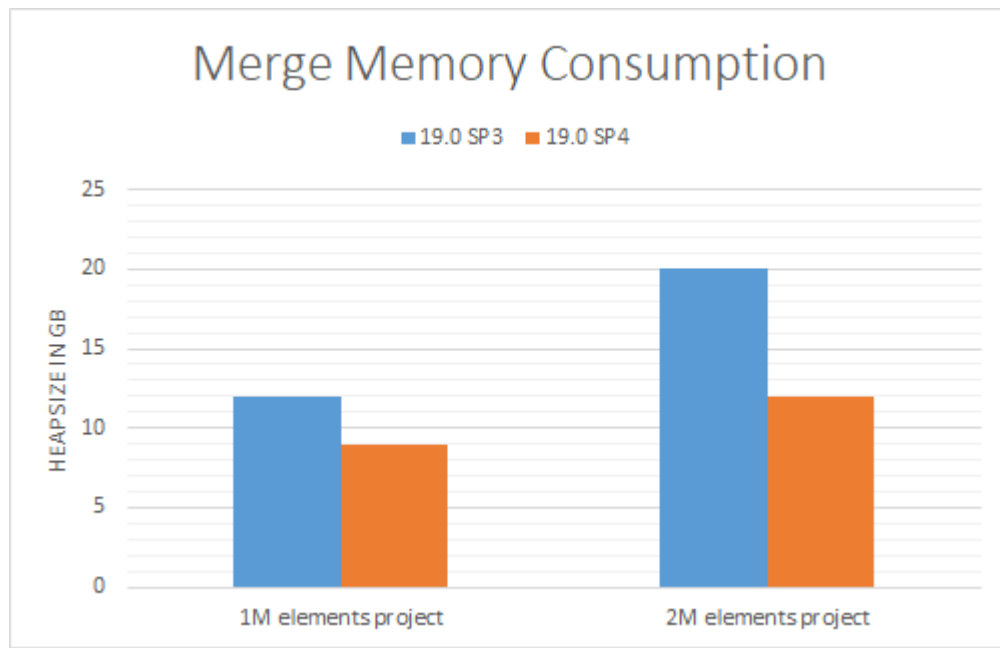


Automatically choosing Source as the default resolution during merge

[Learn more about resolving conflicting changes automatically >>](#)

## Memory Consumption Improvements in Merge

The latest release brings significant improvements to the Project Merge memory consumption. Specifically, with multiple optimizations in place, we reduced the memory footprint by 25%-40%, as compared to version 19.0 SP3. The effect may vary from model to model and depend on its size as well as the number and type of changes themselves.



Comparing memory consumption between different versions

#### Other Features

### Report Wizard

- Bookmark functions for creating Microsoft Word references and hyperlinks are now available. [Learn more about Bookmark tool >>](#)
- You can sort elements that correspond to the Containment tree order. [Learn more how to use this sorter tool >>](#)

### Key Issues Fixed

The following key issues have been fixed with this version:

- No error occurs when uploading generated report files to the server through FTP and SSL in Report Wizard.
- The problem of the Dependency Matrix template displaying incomplete allocated dependencies in Report Wizard has now been solved.
- TWC projects that automatically used a system/standard profile and, at the same time, were used by a non-system/standard usage could no be exported into .mdzip.
- The Excel Import plugin could not be installed since it was not compatible with the 19.0 SP4 version of the modeling tool.
- The direction of Item Flow could not be changed.
- The exception was thrown in a .log file when obtaining element names from the elements that did not have names.
- The validation of diagrams was time-consuming in larger projects.
- The Transformation Wizard performance problems.
- A new nested Instance was created instead of being reused during the data import from Excel.
- Dialog overlapping occurred when several dialogs were opened on MAC.



You can check [the list](#) of publicly available issues or your own reported issues fixed in Cameo Systems Modeler 19.0 SP4.

**Note:** You will be required to login. Use the same username and password as for [www.nomagic.com](http://www.nomagic.com).

#### Version news of servers and plugins

- [Cameo Simulation Toolkit 19.0 SP4](#)
- [Cameo DataHub 19.0 SP4](#)

#### Plugins updated due to compatibility purposes

- [Cameo Requirements Modeler Plugin 19.0 SP4](#)

- [Cameo Systems Modeler 19.0 LTR SP4](#)

- [CSM 19.0 LTR SP3](#)
- [CSM 19.0 LTR SP2](#)
- [CSM 19.0 LTR SP1](#)
- [CSM 19.0 LTR](#)
- [CSM 18.5 FR](#)
- [CSM 18.4 FR](#)
- [CSM 18.3 FR](#)
- [CSM 18.2 FR](#)
- [CSM 18.1 FR](#)
- [CSM 18.0 LTR](#)