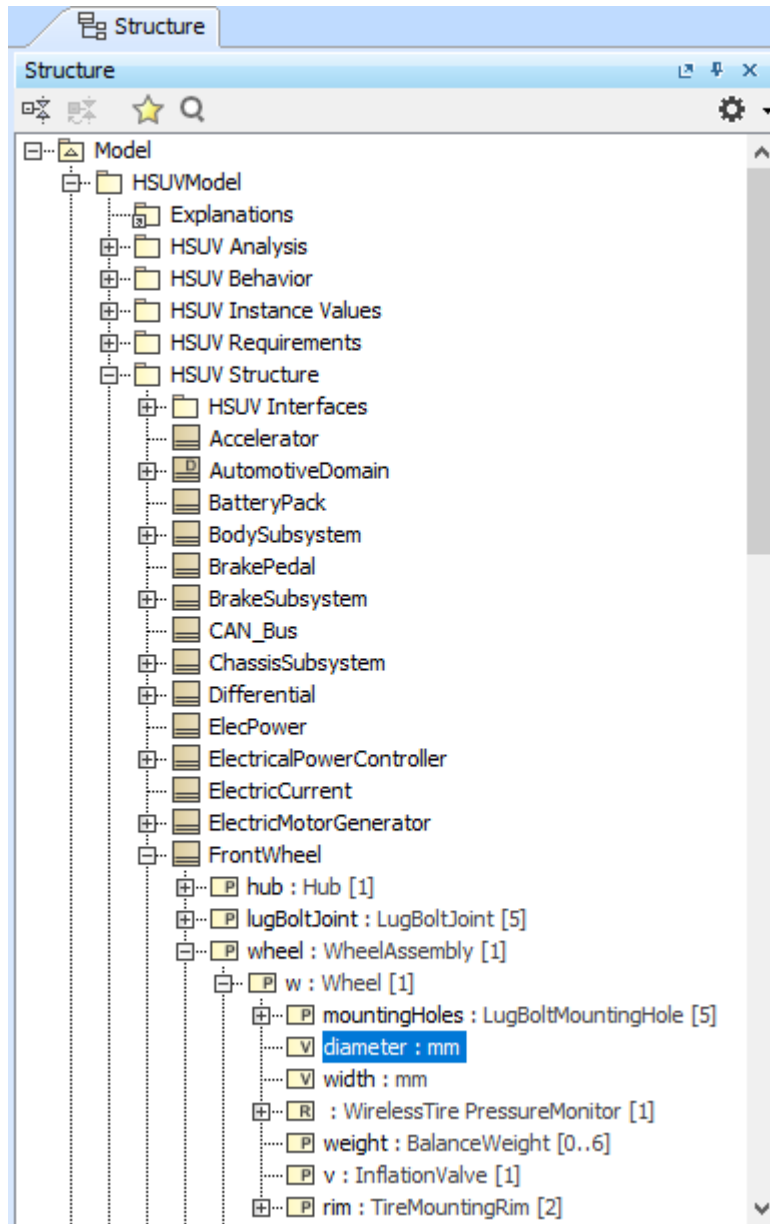


Structure tab

On this page

- [Opening the Structure tab](#)
- [Display as Plain List option](#)
- [Displaying Inherited Structure option](#)
- [Nesting Satisfied Requirements option](#)

The Structure browser allows you to browse for deep nested structures of the structured classifier in your model. The node: **diameter : mm** represents the property: **diameter : mm** of the classifier: **Wheel** and also the property: **w : Wheel** is the property of the classifier: **WheelAssembly**, as shown in the image below:



The Structure tab in the Model Browser.

Opening the Structure tab

To open the Structure tab

1. From the main menu, select **Window > Structure**.

The property nodes, which are shown inside the property node (the parent property node), are the properties of the classifier that type the parent property node.

In the Structure tab, you can open any selected element in a new tree.

To open in a new tree

- Right-click the selected element, and in the shortcut menu, click **Open in New Tree**.


There are two display options in the Structure tab:

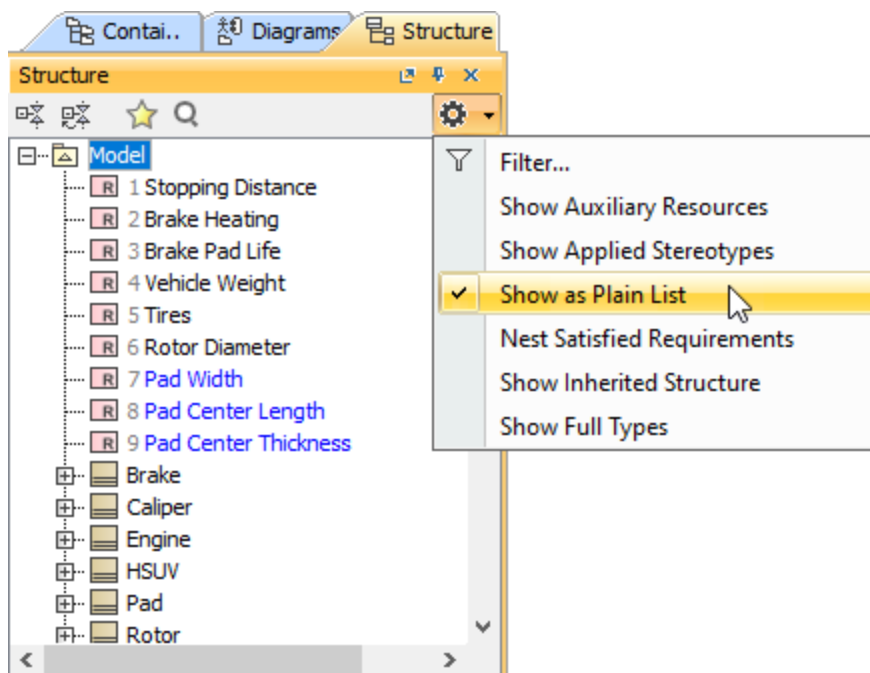
- [Display as Plain List](#)
- [Display Inherited Structure](#)

Display as Plain List option

The classifiers of structure in your model is normally displayed in a Package, Model, or Profile hierarchy. Use the **Display as Plain List** option to show all classifiers of the structure in the model in the same level without consideration of their owner. When you select the **Display in Plain List** option, the classifiers are sorted by their name.

To display elements in the Structure tree as plain list


1. Click  on the right of the Structure Browser.
2. Select the **Display as Plain List** option.

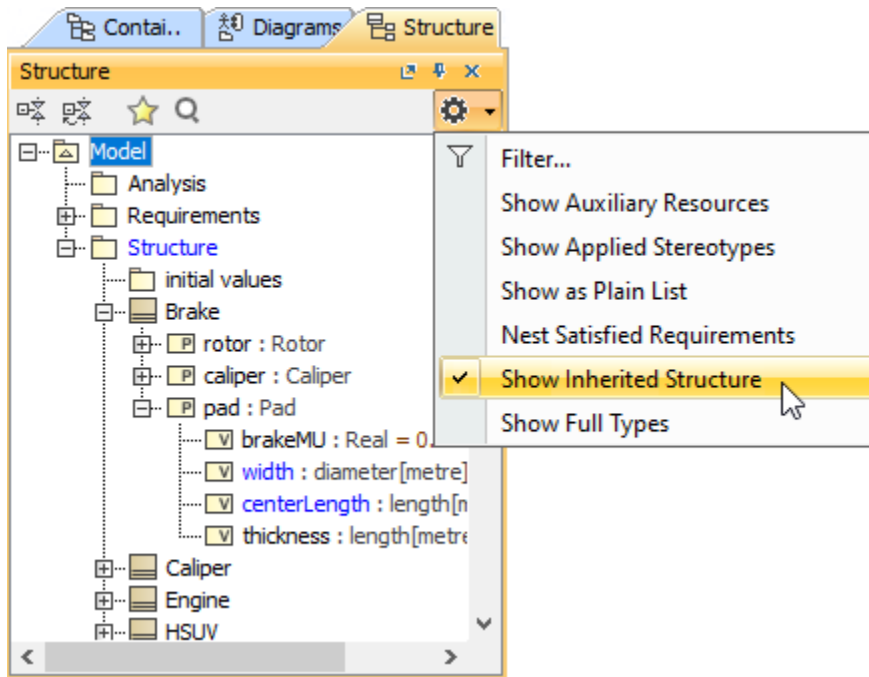


Displaying Inherited Structure option

The Structure tab can show the properties that are inherited from the generalization classifier.


To display inherited structures from the generalization classifier in the Structure tree

1. Click  on the right of the Structure Browser.
2. Select the **Show Inherited Structure** option.




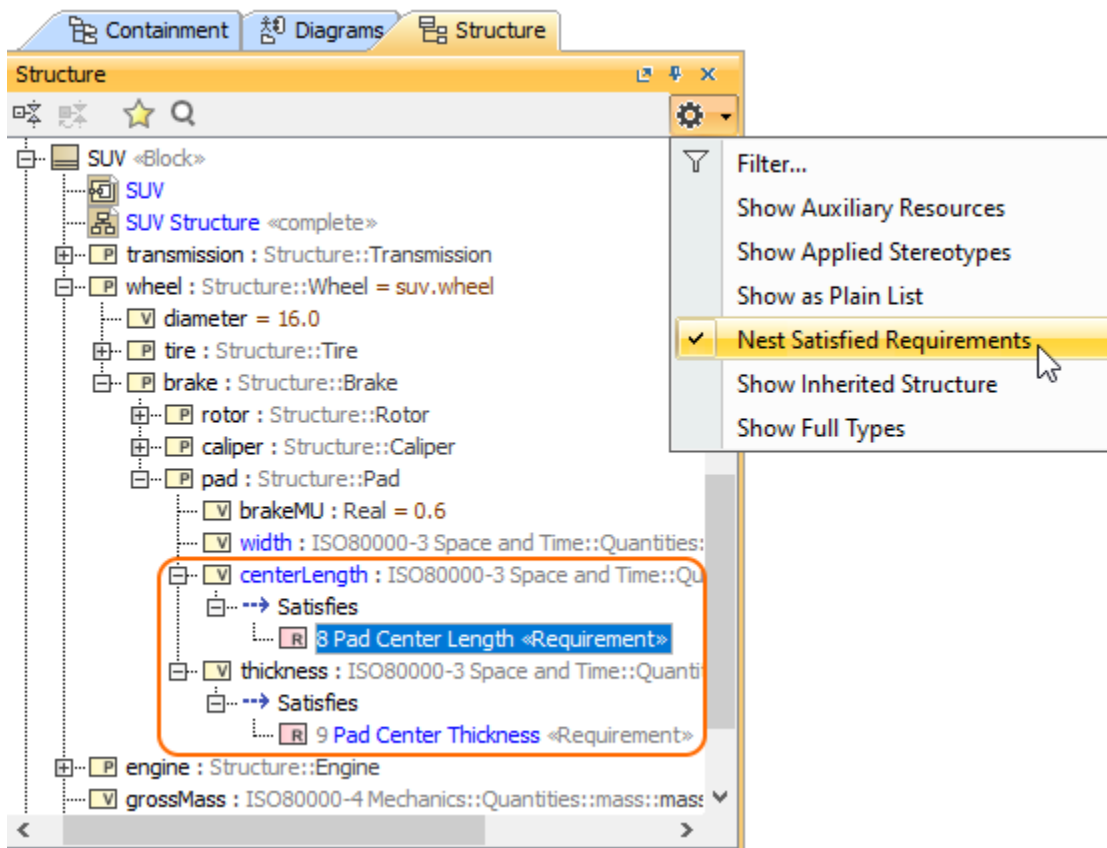
Nesting Satisfied Requirements option

The Structure Tab can also show requirements nested within elements that satisfy them.

 If the relationship is contextualized, its context is considered as well. [Learn more about contextual relationships >>](#)

To nest requirements under the satisfying elements

1. Click  on the right of the Structure Browser.
2. Select the **Nest Satisfied Requirements** option.



Related pages

- [Using the Model Browser](#)
- [Containment tab](#)
- [Structure tab](#)
- [Inheritance tab](#)
- [Diagrams tab](#)
- [Model Extensions tab](#)
- [Search Results tab](#)
- [Lock View tab](#)
- [Zoom tab](#)
- [Documentation tab](#)
- [Properties tab](#)
- [Working with model elements in the Model Browser](#)