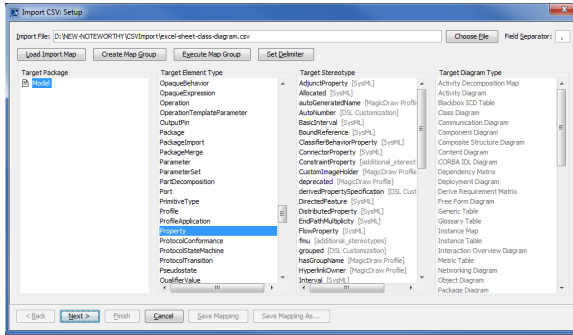


Importing properties to a class diagram

From the last figure in the preceding section , we see that we have been able to import different **Classes**, but these classes do not have any properties or associations yet. The following example shows you how to add some properties to the **Customer** class.

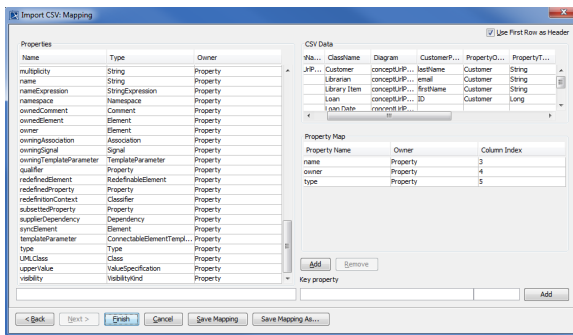
To import properties for a class

1. Click **File > Import From > Import CSV** to open up the CSV Import plugin wizard interface.



2. Click **Choose File** to browse and select your CSV file.
3. Specify a **target package**.
4. Specify a target element type of **Property** as shown in figure above.
5. Click **Next >** to proceed to mapping options. See figure below.
6. Map the column **CustomerProperty** from the CSV file to the property name (by selecting them

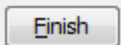
and clicking **Add**).



7. Keep the name property from the **Properties** list selected, and also keep the **CustomerProperty**

column from data source selected, then click the **Add** button beside the **Key Property** textboxes. The **Key Property** textboxes should populate as shown in figure above.

8. Map the column **PropertyOwner** to the property owner.
9. Map the column **PropertyTypeOfCustomer** to the property type.



10. Click . Your MagicDraw **containment area** should be updated with the new data as shown in figure below.

