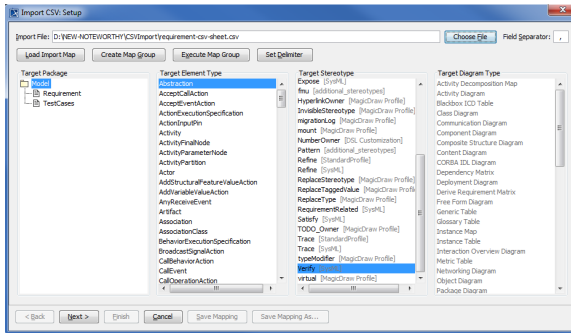


Importing verify relationships

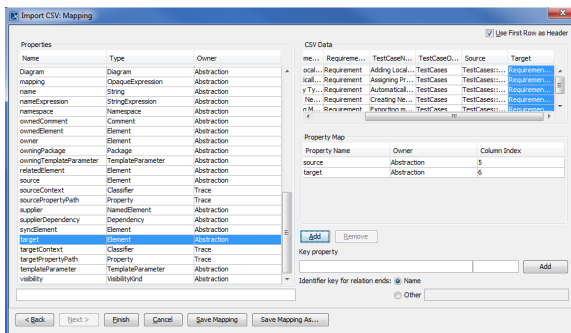
Lastly, the following example shows you how to import some verify relationships from the same CSV file sample.

To import verify requirements

1. Click **File > Import From > Import CSV** to open the CSV import wizard interface, see figure below.



2. Click **Choose File** to browse and select your CSV file.
3. Select a **Target Package**.
4. Select a target type of **Abstraction** with a stereotype of **Verify**.
5. Click **Next >**. The **Import CSV: Mapping** dialog will open, see figure below.



6. Select the column **Source** from the CSV file and the property **source** from the **Properties** list, and then click **Add** to map them.
7. Select the column **Target** from the CSV file and associate it with the property **target** by clicking **Add**.

Finish

8. Click **Finish**. Your MagicDraw **containment tree** should show the verify relationships created as in figure below.

