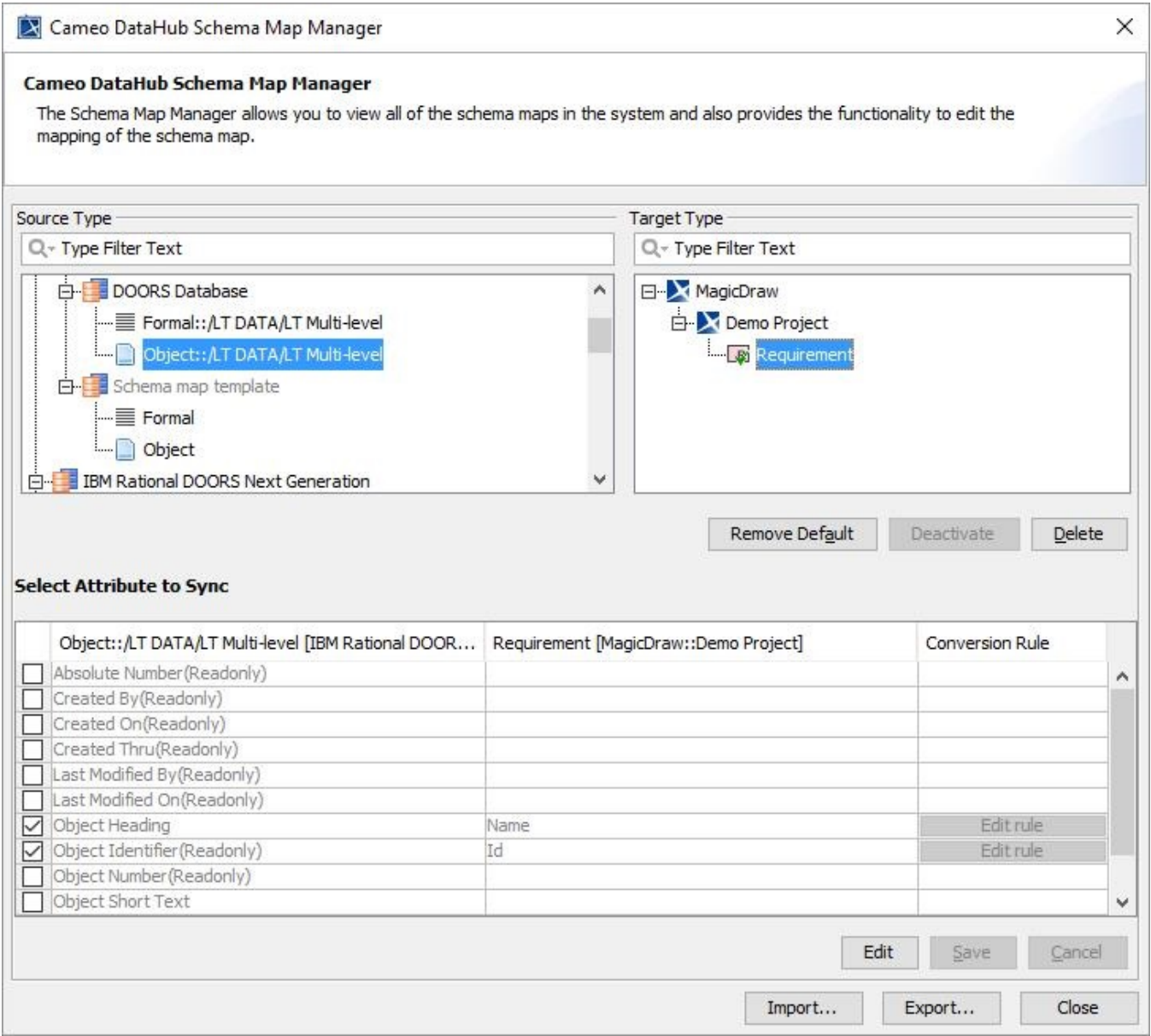
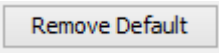
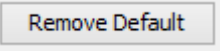



# UI components of Schema Map Manager



The Schema Map Manager dialog.

The following UI components in Schema Map Manager are explained in the following table

UI component	Function
Source Type	All the source types from all Data Sources currently in the system.
Target Type	All the target types from all Data Sources currently in the system.
Set as Default	Sets the current schema configuration as the default one. After clicked, the button changes to  . Clicking  removes the schema configuration from the selected source and target types.

Activate (or Deactivate)	<p>Activates or deactivates the selected <b>Define Target Type from Attribute Value</b> schema.</p> <div>  <b>Note</b>  <b>Activate</b> and <b>Deactivate</b> UI components apply to only the <b>Define Target Type from Attribute Value</b> mapping option. </div>
Delete	Deletes the current schema configuration.
Edit	Edits a schema map.
Save	Saves the editing of a schema map.
Cancel	Cancels the editing of a schema map.
Import	Browses a schema map file to import.
Export	Opens the <b>Export Schema Map Wizard</b> dialog to guide you through exporting the current schema to a file on your file system.
Close	Closes the <b>Schema Map Manager</b> dialog.