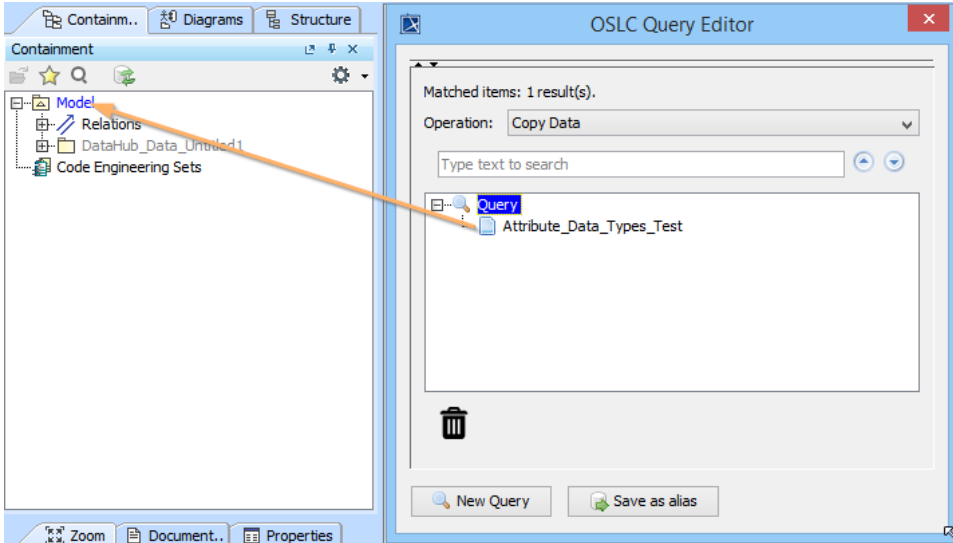


# Copying OSLC query results to a modelling tool as SysML Requirements

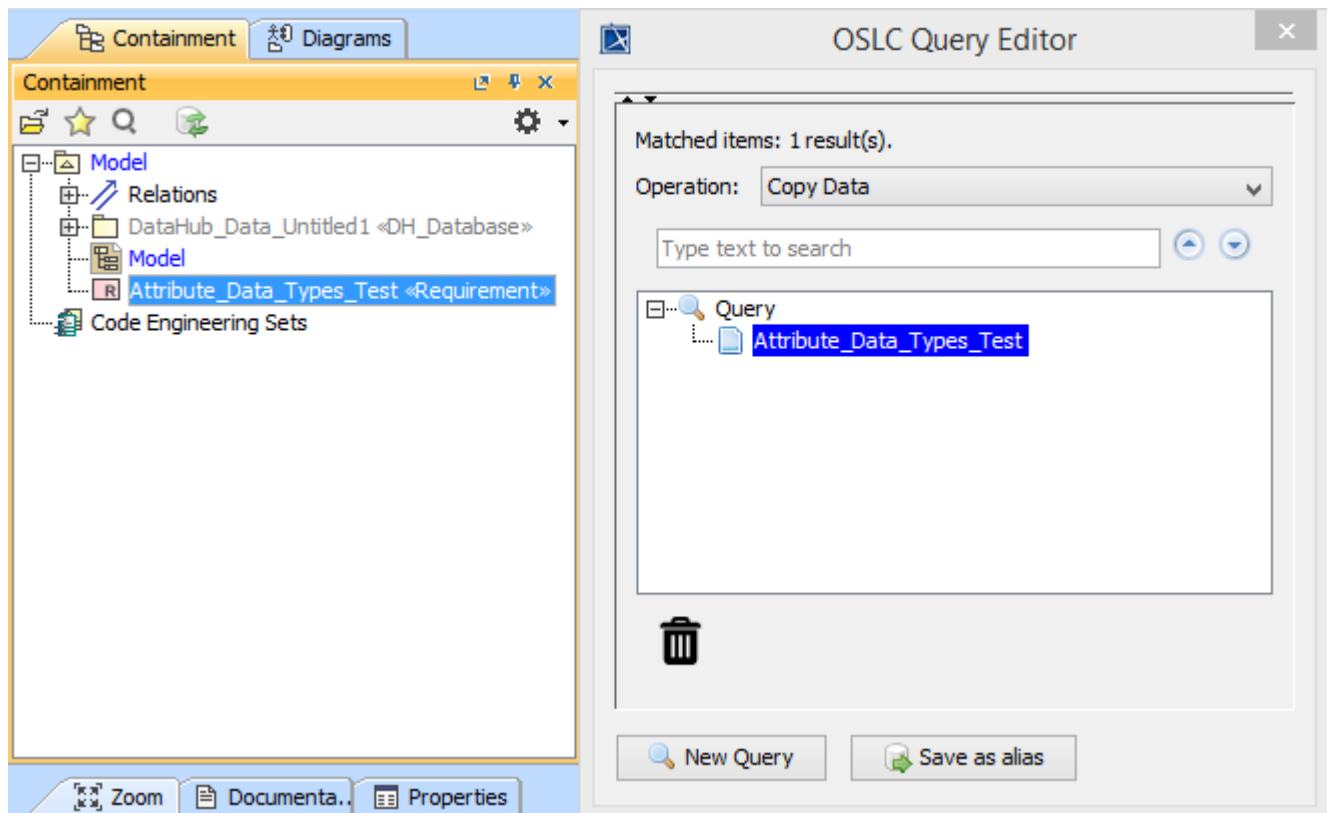
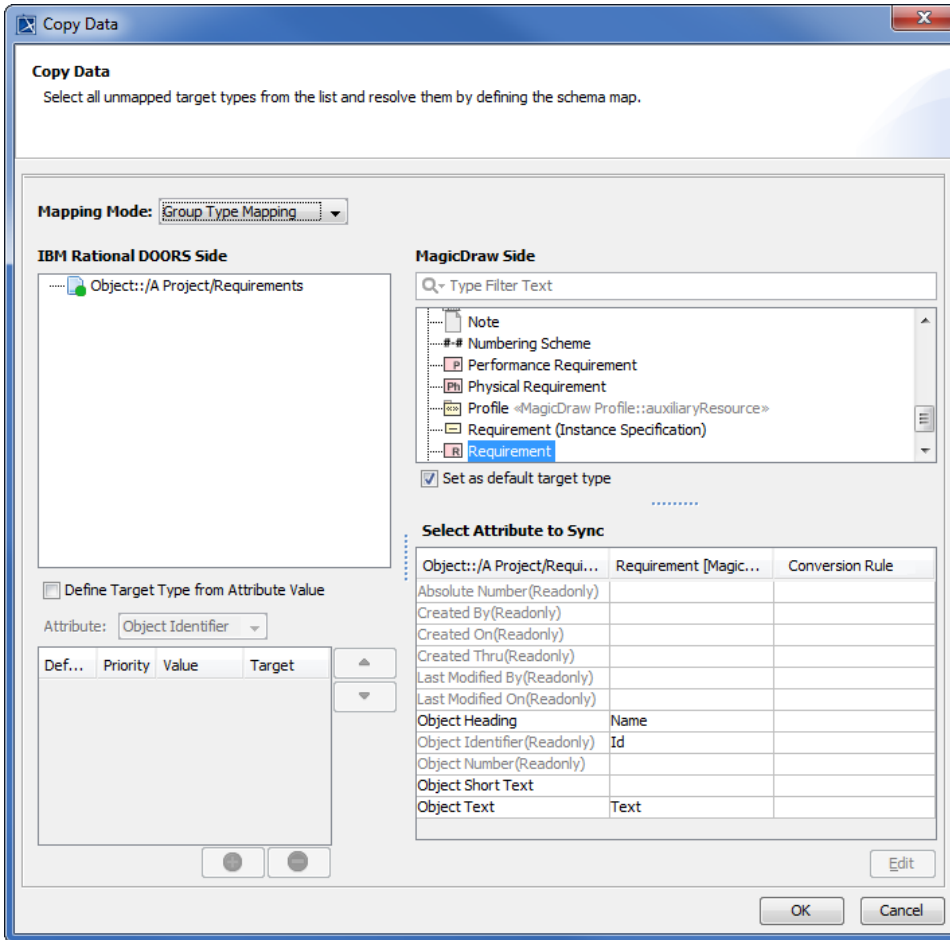
To copy OSLC query results into MagicDraw® as SysML Requirements, you must set up an IBM® Rational® DOORS® Next Generation Data Source and then [query the Data Source using OSLC query syntax](#). When you have the query results, you can copy them to the MagicDraw® Containment tree as SysML Requirements.

To copy an OSLC query result as a SysML Requirement

1. From the **OSLC Query Editor** result pane, drag the matched query results to the MagicDraw® Containment tree.



2. When the **Copy Data** dialog (depending on the DataHub operation you have selected) opens, choose a Target type from the target type list. Click **OK**.



The result of the copying OSLC query result to MagicDraw as a SysML Requirement.

**Related page**

- [Create OSLC Query operation](#)