

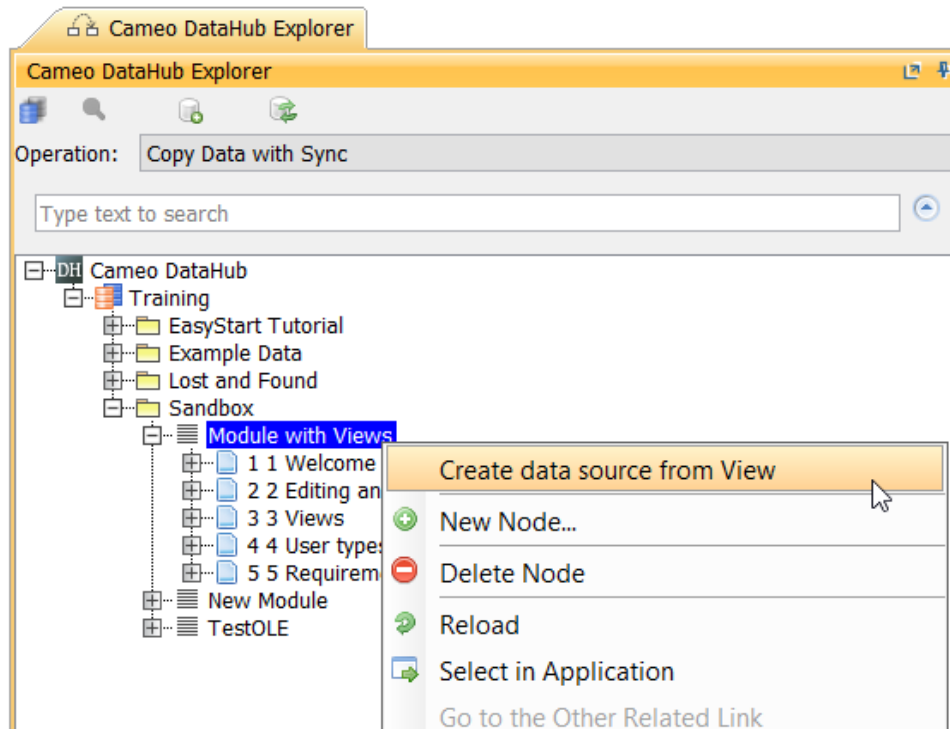
Creating a DOORS module view Data Source

Note

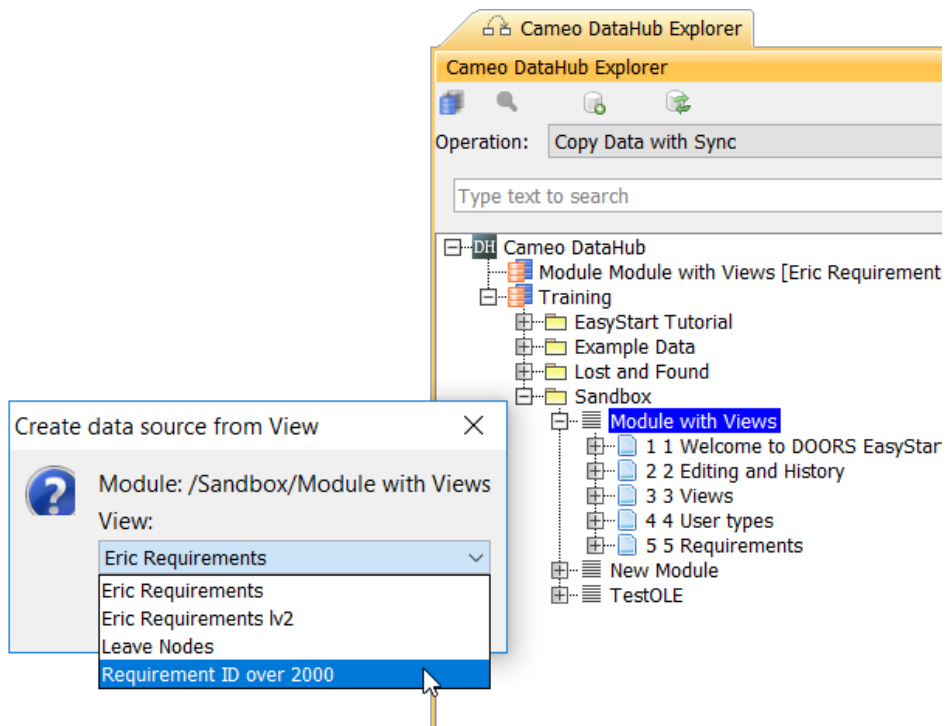
If you want to synchronize new elements from MagicDraw to the module view Data Source, you must synchronize them from the original Data Source that represents that module.

To create a module view Data Source

1. Right-click a module in **DataHub Explorer** and select **Create data source from View**.



2. The **Create data source from View** dialog opens and lists all available views. From the **View** drop-down list, select one of the views.



3. The module view Data Source of the selected view will be created.

