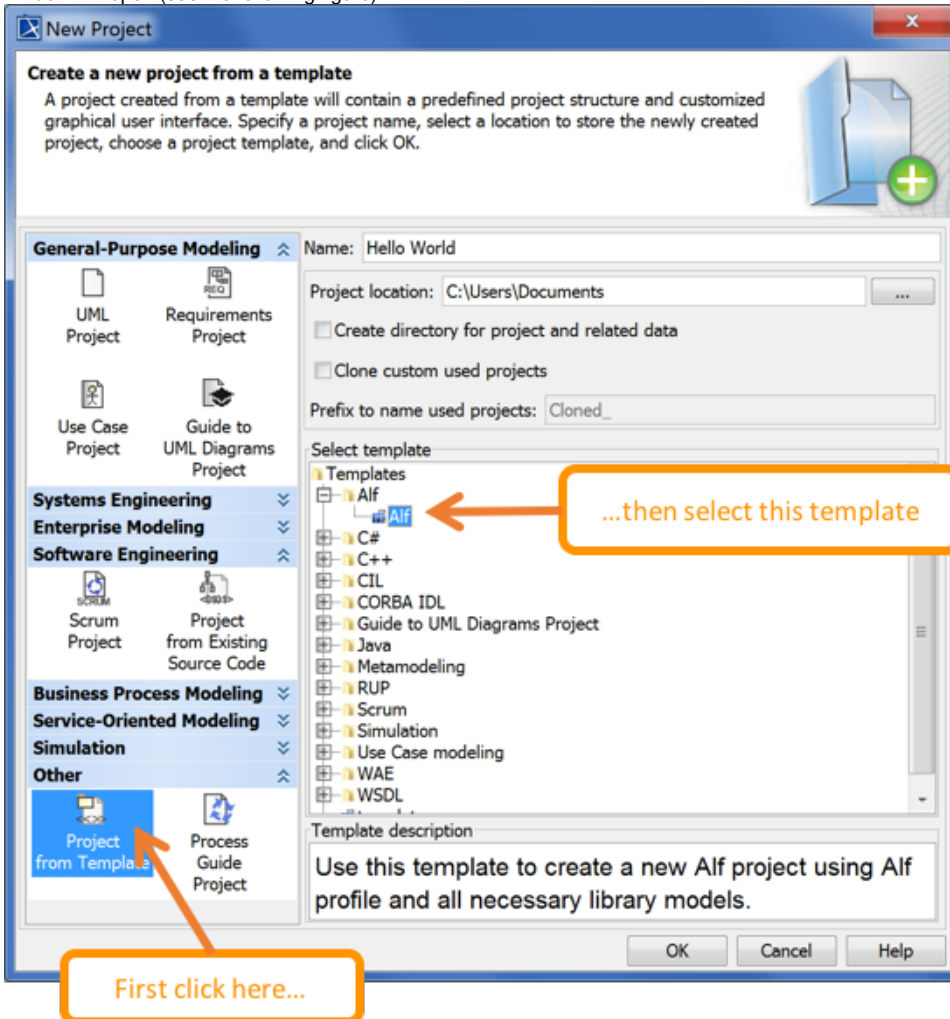


Alf project template

A project in which Alf is to be used can be created using the *Alf project template*. A project created in this way already has the required *Alf Standard Model Library* included, and it has the language "Alf" set as the default for the bodies of opaque behaviors, actions and expressions.

To create a project from the Alf template

1. Select **Create New Project** under **Manage Projects** on the Welcome Screen, or select **File > New Project** on the main menu. The **New Project** window will open (see the following figure).



2. On the bottom left, select **Project from Template** from the **Other** group (you may need to scroll down).
3. On the bottom right, under **Select template**, open the **Alf** folder and select **Alf**.
4. Enter the project name and location in the usual way and click **OK**.



If you have Magic Alf Analyst installed, but you are working on a project that does include the Alf Library, then it will not be possible to edit or compile Alf code. To enable the use of Alf in the project, load the Alf Library by selecting **Tools > Alf > Load Library**.