
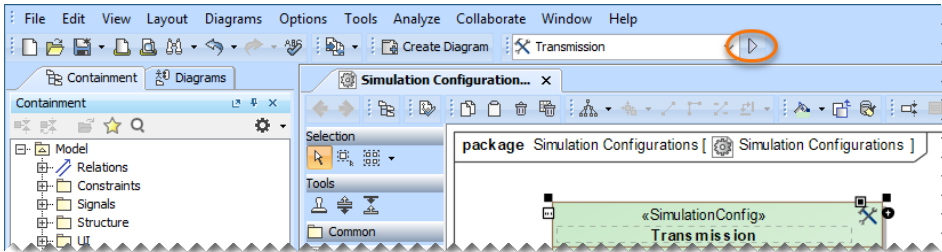


# Simulating a Simulation Configuration

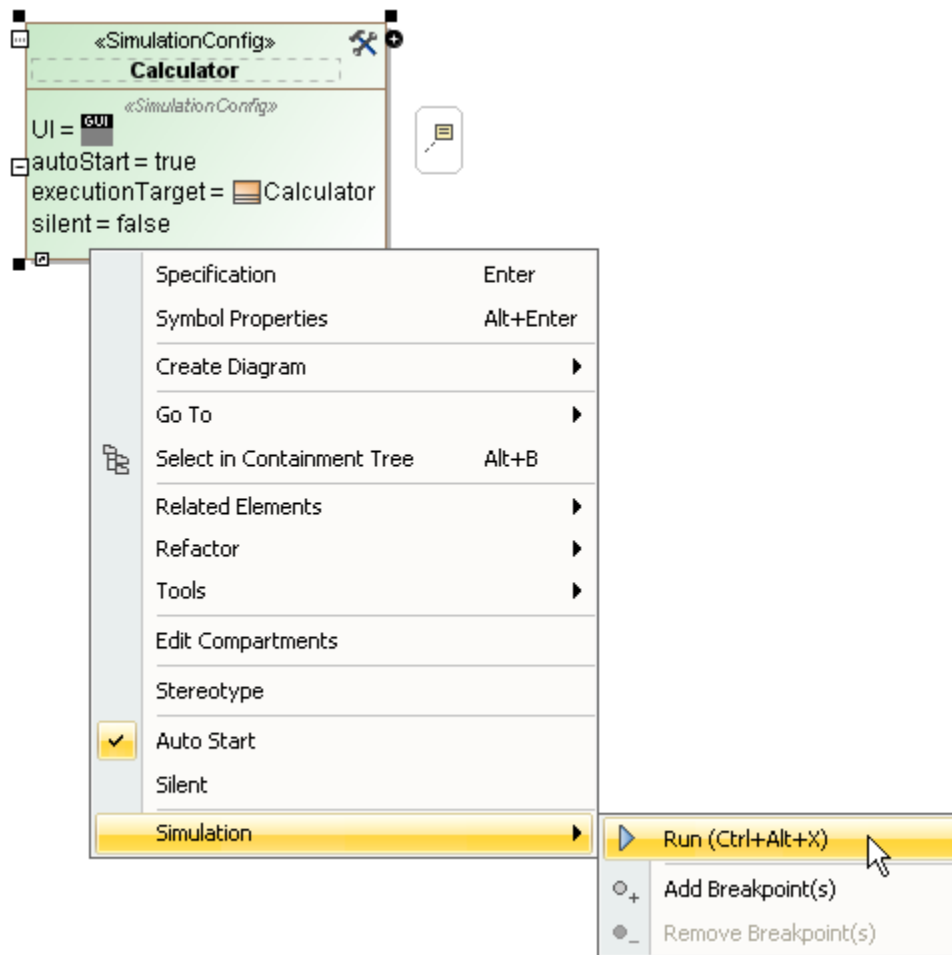
Cameo Simulation Toolkit provides a Simulation Configuration. It is an element that you can use to run an element with options that you can customize. You can see the details of such options in the next chapter. You can run a Simulation Configuration through either the context menu or the main toolbar.

To run a Simulation Configuration, do one of the following

- In the main toolbar, click  next to the Simulation Configuration name.

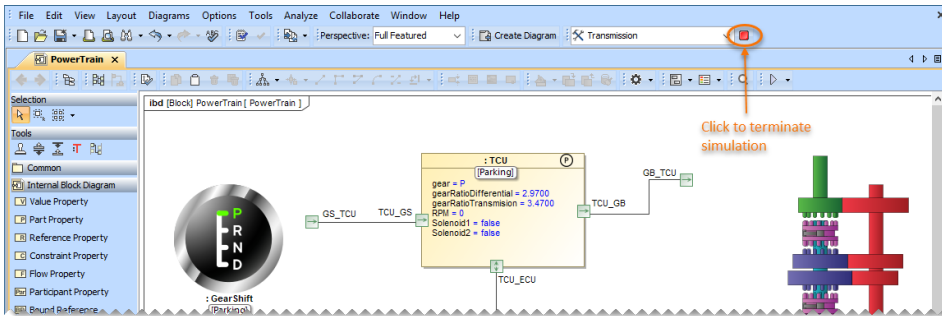


- In the Simulation ConfigurationDiagram, right-click a Simulation Configuration shape and select **Simulation** > **Run**.

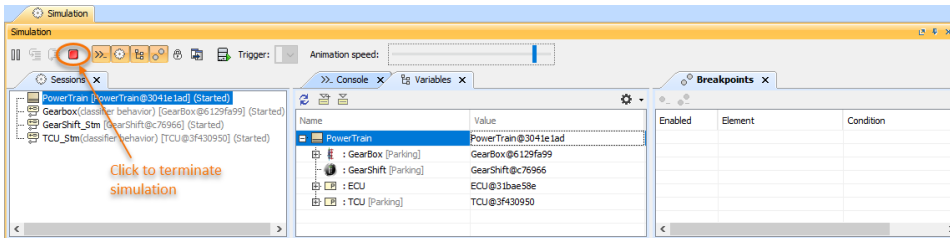


To terminate a Simulation Configuration, do one of the following

- In the main toolbar, click the **Terminate** button next to the Simulation Configuration name.



- Click the **Terminate** button in the **Simulation** pane.



## Related page

- [Simulation Configuration and UI modeling](#)