

Elements simulation

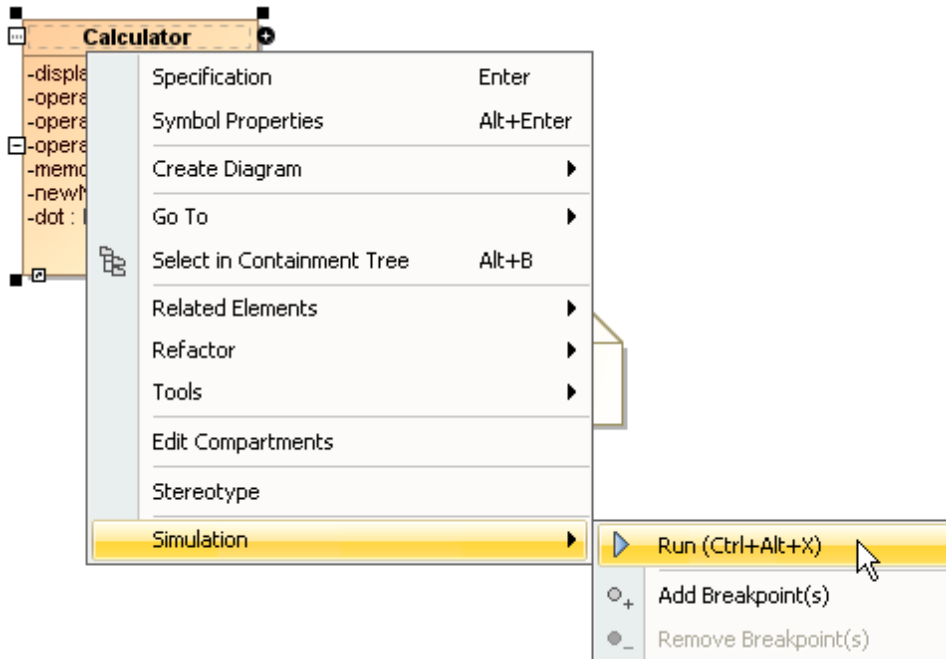
On this page

- [Behavior](#)
- [Class](#)
- [Diagram](#)
- [Instance Specification](#)
- [Table](#)

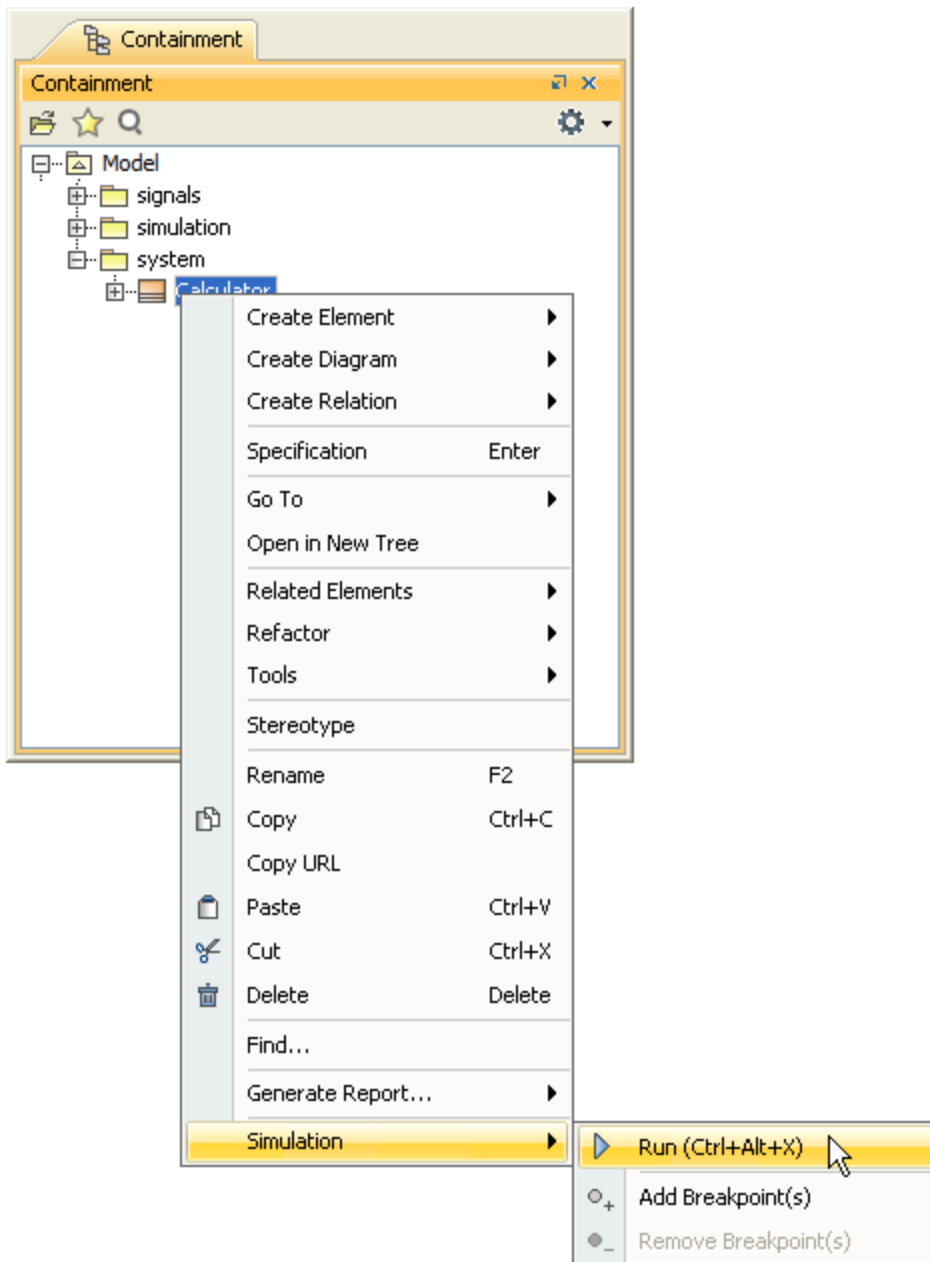
You can run a model simulation through the shortcut menu and the diagram toolbar.

To run a model simulation through the shortcut menu


1. Right-click an element either on a diagram and select **Simulation > Run**.

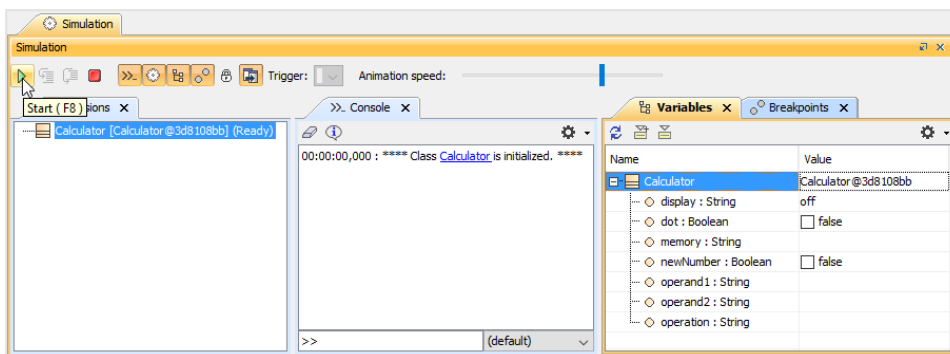


Or right-click it in the containment browser (see the following figure) and select **Simulation > Run**, which will be enabled if the selected element is a Behavior or a diagram whose context is a Behavior.



The **Simulation** window will open with a new simulation session in the **Sessions** pane.

- Click the **Start** button  on the toolbar of the **Simulation** pane to run the model.



To run a model through the diagram toolbar

1. Do any of the following
 - Click the **Run** or **Run with Context** button on the diagram toolbar to run a diagram that has a context Class or Behavior (Composite Structure diagram, Activity diagram, State-Machine diagram, Use Case diagram, or Sequence diagram). Cameo Simulation Toolkit will run the class or the behavior which is the context of the diagram.
 - Select the element, which you want to run, on a Class diagram or a Package diagram, and click the **Run** or **Run with Context** button on the diagram toolbar. Cameo Simulation Toolkit will run the selected element on the diagram. A new simulation session in the **Sessions** pane will open.
2. Click the **Start** button on the toolbar of the **Simulation** pane to run the model.