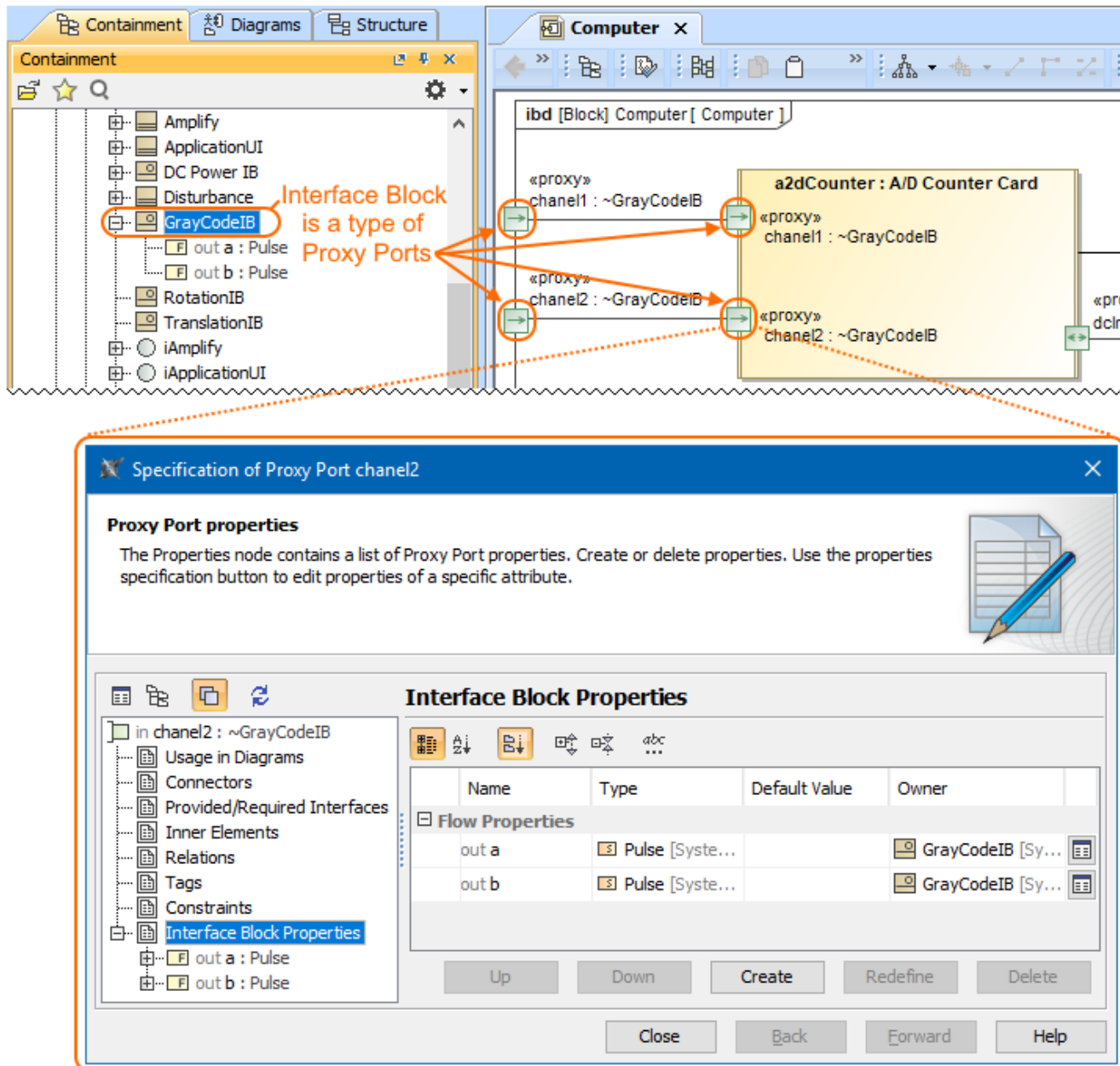


Defining interfaces using ports

Ports are points at which external entities can connect to and interact with a [Block](#) in different or more limited ways than connecting directly to the Block itself. They are properties with a type that specifies features available to the external entities via [Connectors](#) to the ports. [Proxy Ports](#) define the boundary by specifying which features of the owning [Block](#) or [Part Properties](#) are visible through external connectors, while [Full Ports](#) define the boundary with their own features. Proxy Ports are always typed by [Interface Blocks](#), a specialized kind of [Block](#) that has no behaviors or internal parts. Full Ports cannot be behavioral in the UML sense of standing in for the owning object, because they handle features themselves, rather than exposing features of their owners, or internal parts of their owners.

In the following figure, the *chanel2* Proxy Port is typed by *GrayCodeIB* Interface Block which contains two Flow Properties of *Pulse* Signal: *out a* and *out b*. It means the Proxy Port that is typed by *GrayCodeIB* Interface Block can send and receive Flow Items of *Pulse* Signal.



The GrayCodeIB Interface Block is a type of Proxy Ports.

To define interfaces using ports

1. Create a [Block](#) and decompose it in the [SysML Internal Block Diagram](#).
[How to define Blocks>>](#)
[How to create Block internal structure >>](#)
2. In the [SysML Internal Block Diagram](#), create [Proxy Ports](#). [How to create ports >>](#)
3. Create [Interface Block](#) in the model and specify its [Flow Properties](#). [How to define Interface Block >>](#)

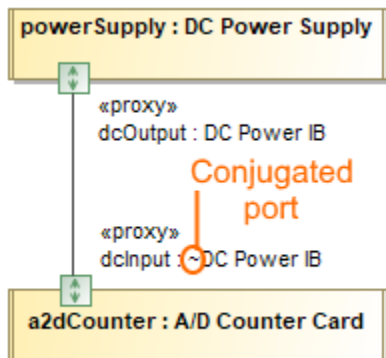
4. Select created Interface Block as Proxy Port type. [How to select port type >>](#)

Ports are connected via [Connector](#), both port types must be compatible.

If the same [Interface Block](#) is set as type for a ports on both ends, one of port should be conjugated. The conjugate mechanism reverses the direction of the [Flow Properties](#) and makes the connection compatible. For this, you can conjugate a port or create [Conjugated Interface Block](#).

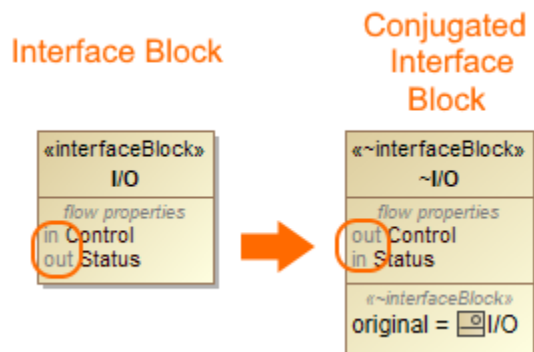
To conjugate port, do either

- On the diagram pane, right-click the port shape, and select the **Is Conjugated** command.
- Open the [Specification window](#) of port, and set the **Is Conjugated** property value to true. The port is conjugated and the tilde symbol (~) appears before the ports type. See the following figure.



To create Conjugated Interface Block

- Right-click one or several Interface Blocks and select **Tools > Create Conjugated Interface Block**. The [Conjugated Interface Block](#) is created with the same [Directed Features](#) and [Flow Properties](#) as original but with opposite directions. It is created under the same owner as original Interface Block.



Related pages

- [Creating ports](#)
- [Defining Interface Blocks](#)
- [Provided and Required Interfaces](#)

Sample model

The model used in the figure of this page is the **InvertedPendulum** sample model. To open this sample do one of the following:

- Download [InvertedPendulum.mdzip](#).
- Find in modeling tool <modeling tool installation directory>\samples\SysML\Inverted Pendulum\Inverted Pendulum.mdzip.