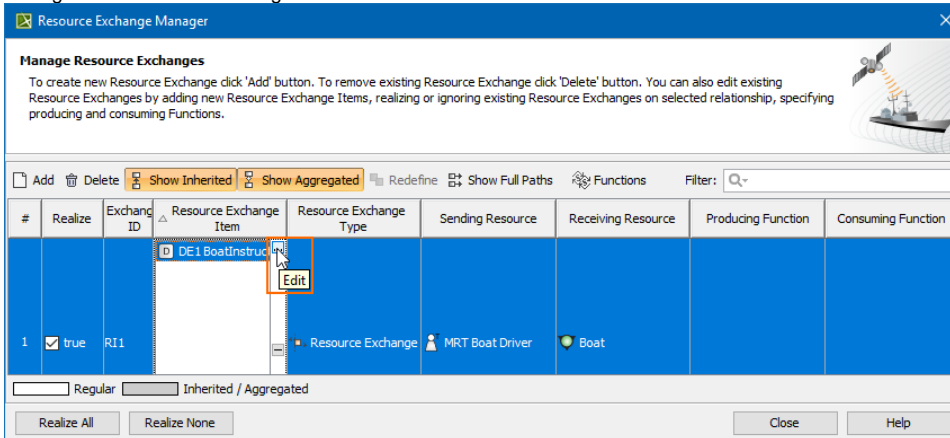


# Resource Exchange Manager dialog


The **Resource Exchange Manager** dialog enables to analyze and manage the Resource Exchanges data. You can:

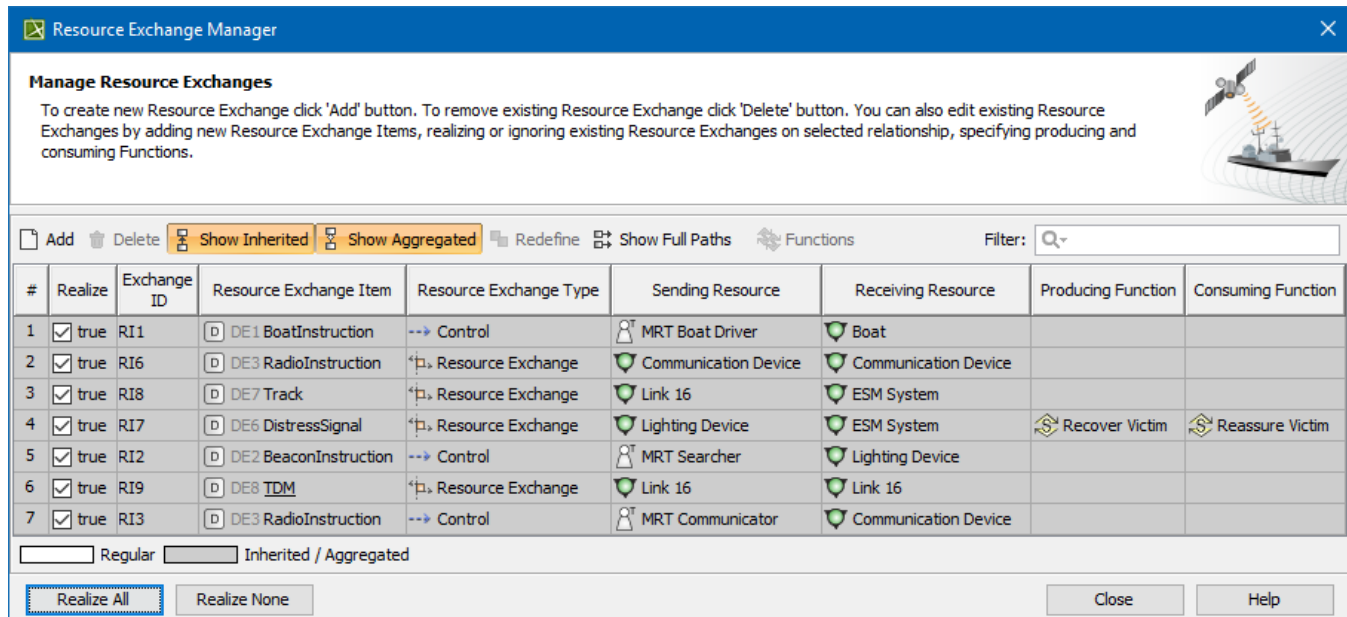
- Edit existing Resource Exchanges by adding new Resource Exchange Items
- Realize or ignore existing Resource Exchanges on selected relationship
- Change the Resource Exchange Item.



- Specify producing and consuming Functions.

To open the **Resource Exchange Manager** dialog

1. Select Resource Connector, Association, Function Control Flow, Function Object Flow, or Resource Message in the diagram pane.
2. On the smart manipulator, click  .  
The **Resource Exchange Manager** dialog opens.



## Related procedures

- [Creating Resource Exchange in P1 diagram](#)
- [Creating Resource Exchange in P2 diagram](#)
- [Creating P3 table](#)
- [Creating Resource Exchange in P4 Resource Functions diagram](#)
- [Creating Resource Exchange in P6 diagram](#)
- [Creating Resource Exchange in SvcV-10c diagram](#)
- [Creating Resource Exchanges in SV-1 diagram](#)
- [Creating Resource Exchange in SV-1 Internal diagram](#)

- [Creating Resource Exchange in SV-2 Internal diagram](#)
- [Creating Resource Exchange in SV-2 diagram](#)
- [Creating Resource Exchange in SV-4 Systems Functionality Description diagram](#)
- [Creating Resource Exchange in SV-10c diagram](#)
- [Realized Resource Exchange wizard](#)