

# MODAF. SOV-4b Service State Model

## Description

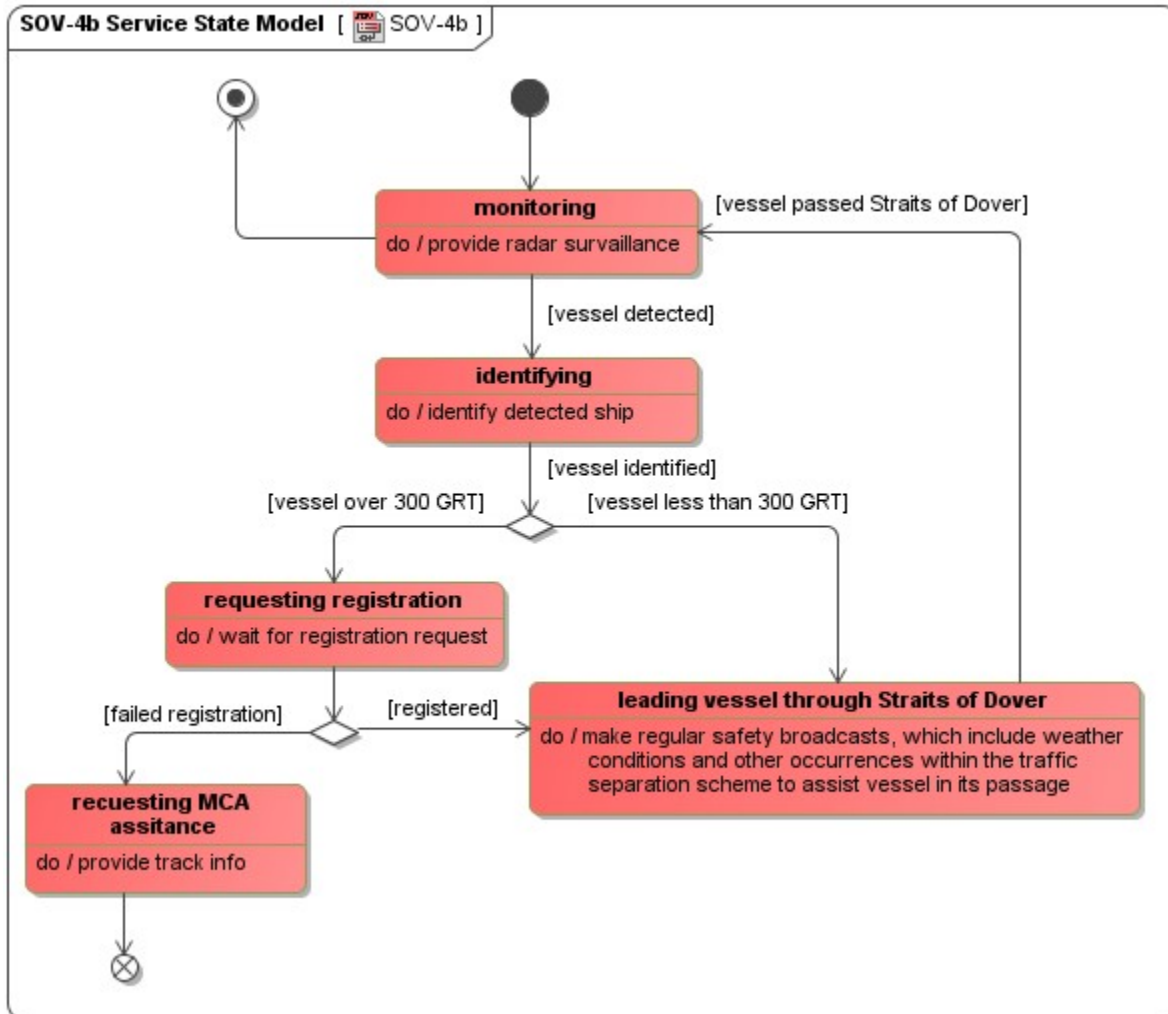
The purpose of the Service State Model View (SOV-4b) is to specify the possible states a service may have, and the possible transitions between those states. It is generally considered good practice to make services stateless – i.e. consumers of a service are not aware of what state the service is in. However, in specifying a service, it is often necessary to specify the allowable states so as to constrain how implementations of the service will behave.

As the states of a service may affect its ability to supply those services, it is important for consumers to understand those states. An SOV-4b is a specification of those states, and the possible transitions between them.

## Implementation

SOV-4b can be represented using a UML State Machine diagram.

## Sample



SOV-4b Service State Model

## Related elements

- [Service State Description](#)
- [Service Interface](#)

## Related procedures

- [Allocate Activities to State Internal Behaviors](#)