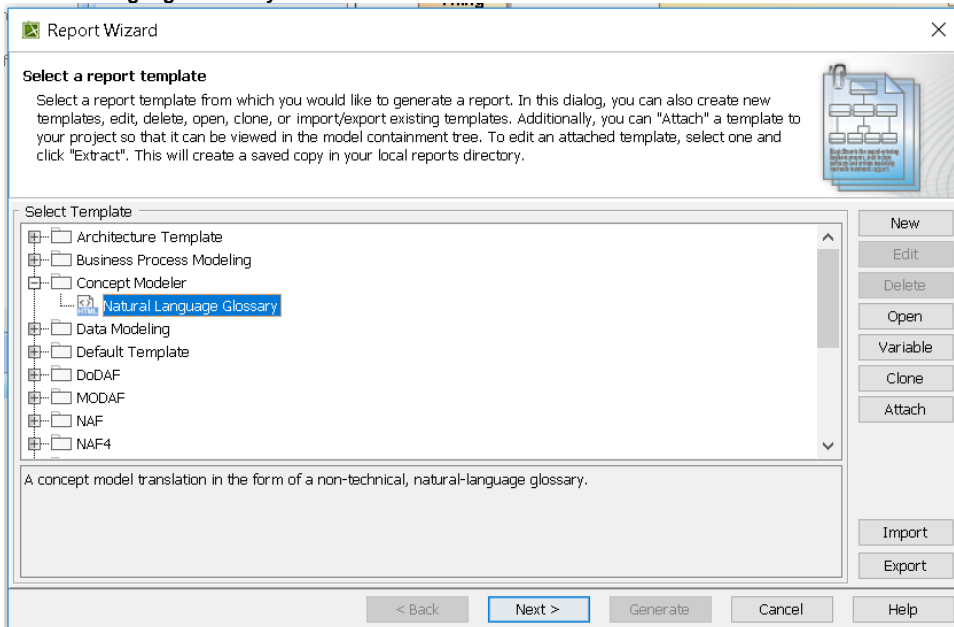


# Generating a natural language glossary

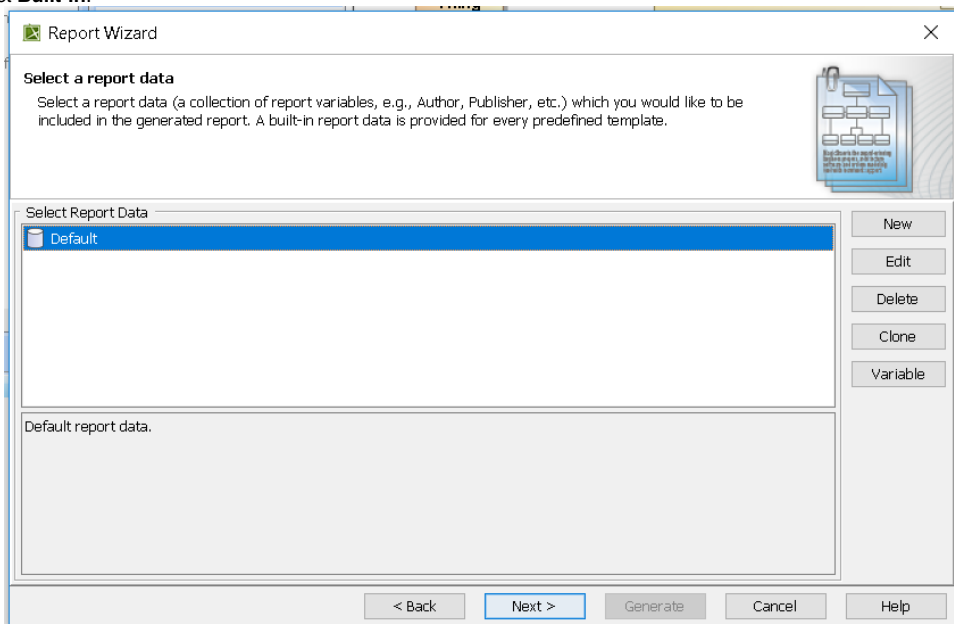
You can use the [Report Wizard](#) to generate a natural language glossary for your model. You can refer to the [Report Wizard dialog](#) to learn about each button's functionality.

To generate a Natural Language Glossary

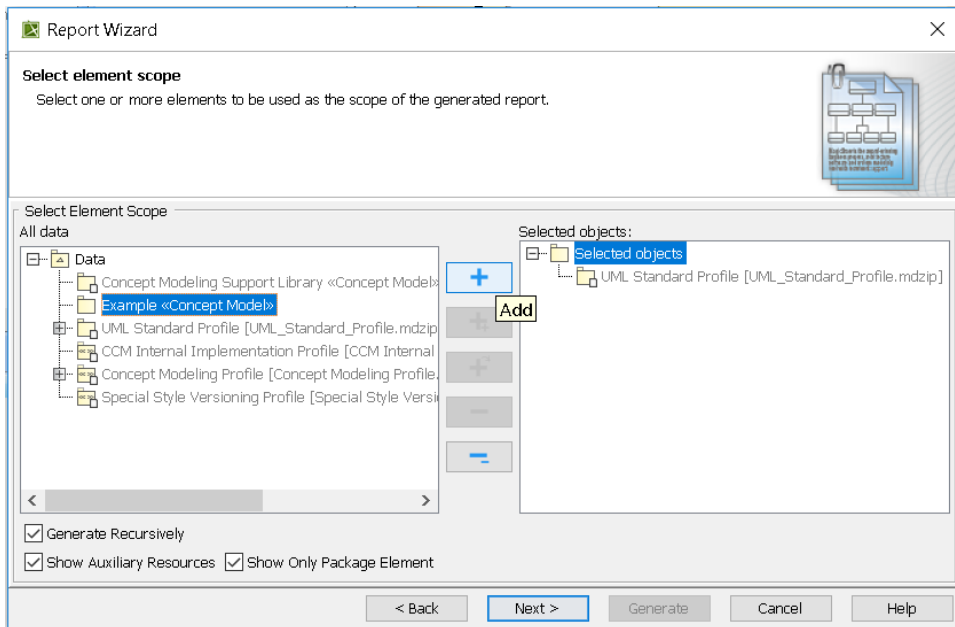
1. Select **Tools > Report Wizard** from the main menu.
2. Expand the **Concept Modeler** folder.
3. Select **Natural Language Glossary**.



4. Click the **Next** button.
5. Select **Built-in**.

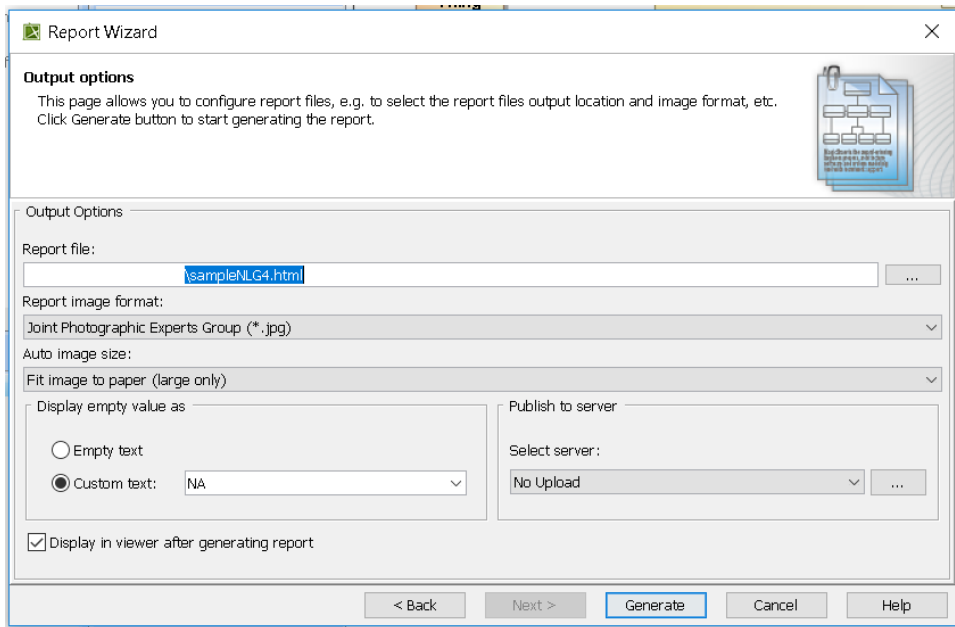


6. Click the **Next** button.
7. Select the package(s) you want to generate a natural language glossary for.
8. Click the **Add** button.
9. Click the **Next** button.



10. Name your file and file location for your file.

11. Click the **Generate** button. The Natural Language Glossary will be generated.





Classes: [B](#) [C](#) [I](#) [L](#) [M](#) [O](#) [S](#)  
Properties: [A](#) [C](#) [D](#) [E](#) [F](#) [H](#) [I](#) [K](#) [L](#) [M](#) [N](#) [P](#) [R](#) [S](#) [T](#) [U](#)

Search

Suppress Model-Generated Definitions: ☐

## CCM Natural Language Glossary

### H

#### has broader

A property specializing [has broader transitive](#) that can be used by any class.

Definition: *Relates a concept to a concept that is more general in meaning.*

#### has broader match

A property specializing [is in mapping relation with](#) and [has broader](#) that can be used by any class.

Definition: *skos:broadMatch is used to state a hierarchical mapping link between two conceptual resources in different concept schemes.*

#### has broader transitive

A property specializing [is in semantic relation with](#) that is used by the class [Concept](#).

Definition: *skos:broaderTransitive is a transitive superproperty of skos:broader.*

A sample of the Natural Language Glossary generated with class and property definitions.

#### Related pages

- [Usage](#)
- [Working with the natural language glossary](#)
- [Customizing your natural language glossary](#)