


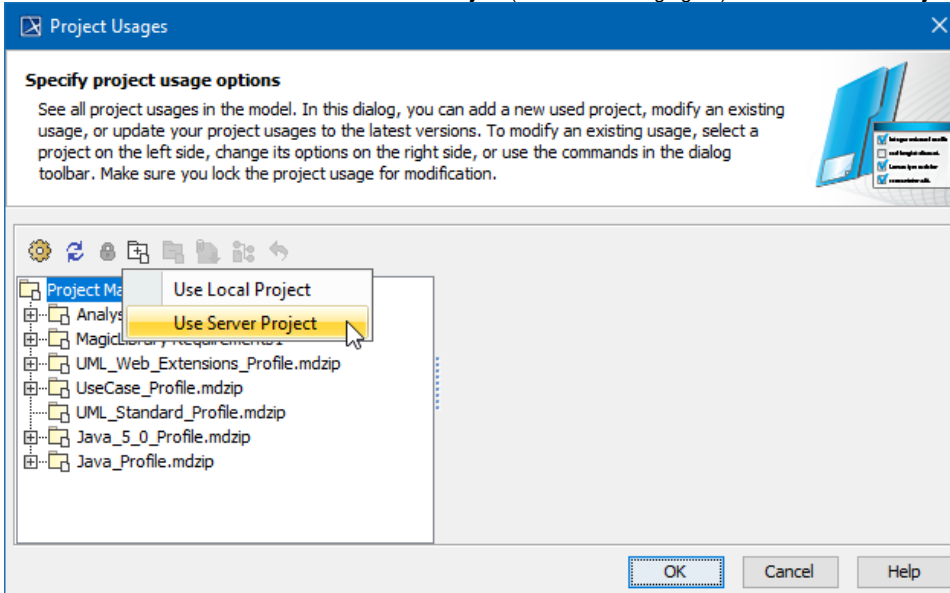
# Start using a project in your project

To begin using a project in your current project, you must have an **Administer Resources** permission.

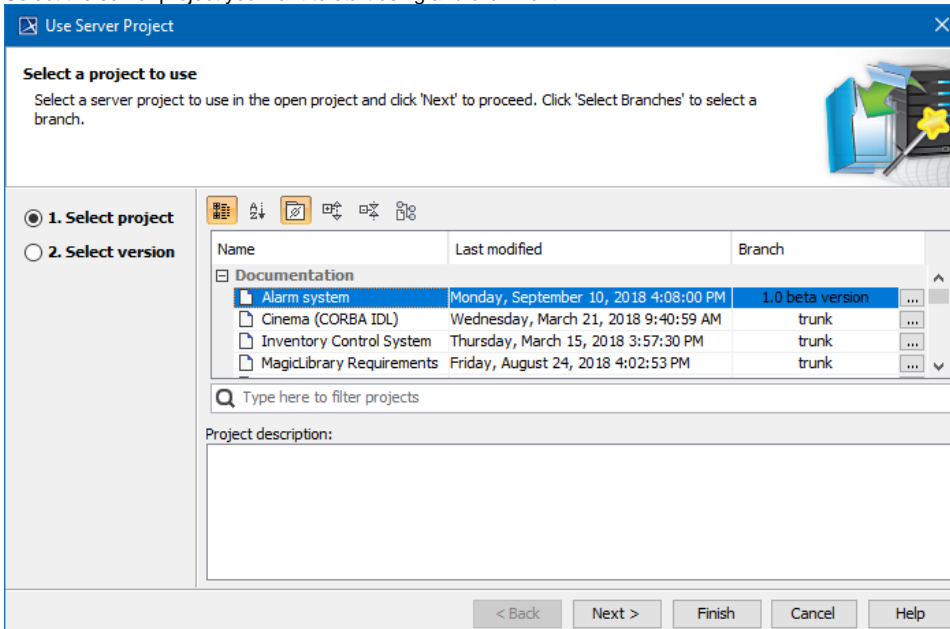
If you want to use an element from either a local or Teamwork Cloud (TWCloud) project, you must use that project in your project first. Projects can be used only in the read-only mode.

To start using a server project in your project

1. Select one of the following:
  - **Options > Project Usages**
  - **Collaborate > Project Usages > Project usages**The **Project Usages** dialog opens.
2. Click the  button and then select **Use Server Project** (see the following figure). The **Use Server Project** wizard opens.



3. Select the server project you want to start using and click **Next**.





### Directly/Indirectly used projects

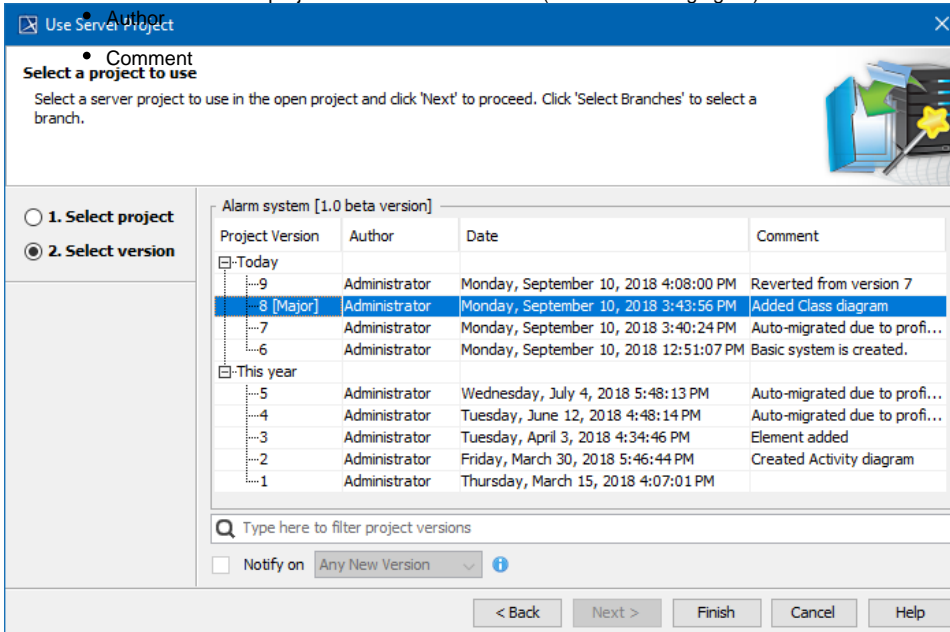
The selected project is treated as a directly used project. A project used by a used project is treated as an indirectly used project.



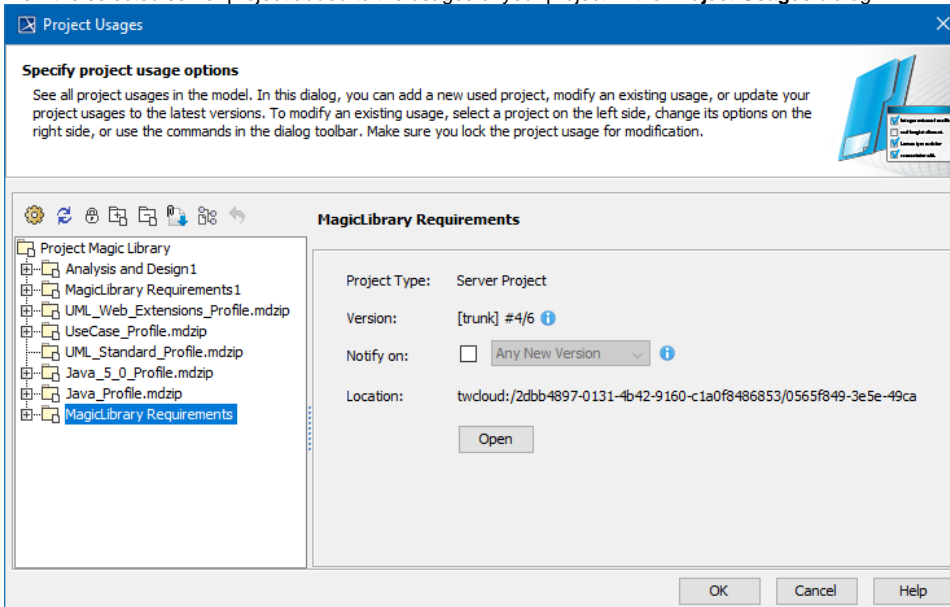
### Search bar

Use the search bar to filter projects according to:

- Project Version (together with the commit tags)
  - Author
  - Comment
4. Select a version of the server project to use and click **Finish** (see the following figure). The wizard closes.



5. Wait while the usage to the selected project is established.
6. View the selected server project added to the usages of your project In the **Project Usages** dialog.



The used project version shows which version is used and the latest project version (for example, #2/3 means project version 2 is used but version 3 is the latest project version).

Select **Notify on Any New Version** to get instant notifications about changes to used projects to ensure they are always up to date.



### Used project

Please note, the whole content of a used project is added to the main project.

7. Click **OK** to close the dialog.

The selected server project also appears in the Model Browser, under the package *Project Usages*.

Once the usage to the project is established, you can start using its elements. For example, you can select them as types in your project.

Establishing usage to a local project is very similar. In this case, you don't have to select the project version, since local projects don't have them.

**Related pages**

- [Editing the content of a used project](#)
- [Changing the used project version](#)
- [Importing the content of a used project into your project](#)
- [Stop using the project in your project](#)