

Covering use cases of Excel Import Plugin


This page is dedicated for those who used the Excel Import Plugin for data import to the model. Since 20.0 version this plugin is deprecated and import functionality is covered by [Excel/CSV Sync](#) (import to table) and [Excel/CSV Import](#) (import to model) features. To explain the mapping of deprecated Excel Import Plugin, read the following sections:

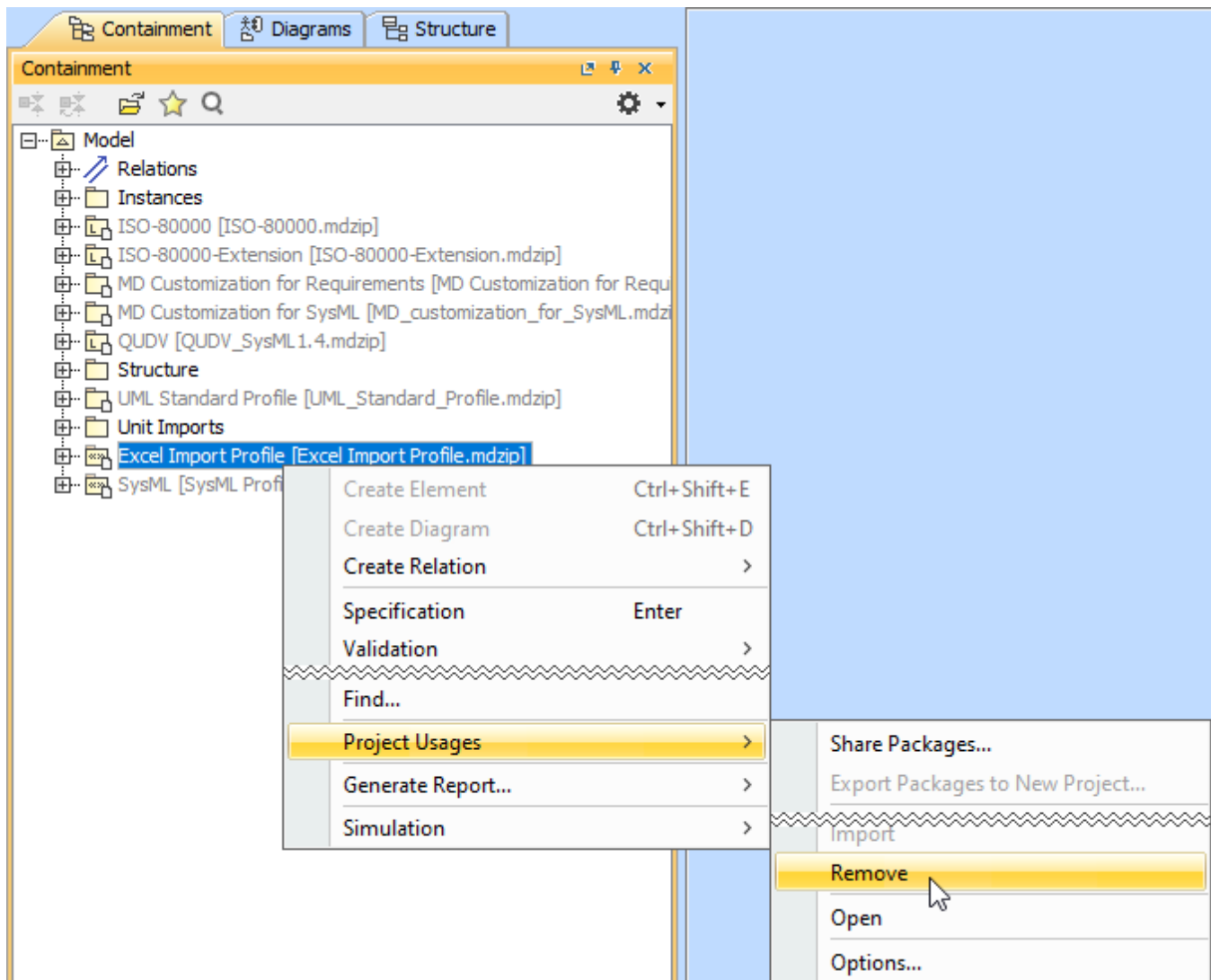
- [Removing auto usages](#)
- [Preparing the Excel spreadsheet](#)
- [User interface comparison](#)
- [Mapping comparison](#)

Removing auto usages

Before importing data from Excel or CSV files by using the [Excel/CSV Import](#) or [Sync](#) features, you must remove auto usages of Excel Import Plugin, since 20.0 version its no longer available to use. [Learn more about automated project usages >>](#)

To remove the Excel Import Plugin usage from your project

1. Open the project.
2. In the Containment tree, click  and select **Show Auxiliary Resources**.
3. Right-click an *Excel Import Profile* package in the [Containment tree](#) and, from its shortcut menu, select **Project Usages > Remove**.
After removal, all the elements of the used project disappear from the Containment tree, and all the references to these elements are cleared from other model places.



Preparing the Excel spreadsheet

Before importing data from Excel file by using the [Excel/CSV Import](#) or [Sync](#) features, we recommend to make sure the data in your Excel file is in line. As shown in the following figure, the merged cells are eliminated by showing nested structure in line. [Learn more about preparing Excel file to import >>](#)

Excel table prepared for the import with Excel Import Plugin

	A	B	C	D	E	F	G	H
1								
2								
3			Engines					
4			SerialNum	Year	Engine type			
5					Make	Model	HP	Fuel
6					Cinton	K90	99	GAS
7					Mercruiser	350MagMPI	300	GAS
8			M3060	1962	Mercury	Mark30	80	GAS
9								

Excel table prepared for the import with Excel/CSV Sync or Import features

	A	B	C	D	E	F	G
1							
2							
3		Engines.SerialNum	Engines.Year	Engines.EngineType.Make	Engines.EngineType.Model	Engines.EngineType.HP	Engines.EngineType.Fuel
4		C1075	1975	Cinton	K90	99	GAS
5		M30099	1999	Mercruiser	350MagMPI	300	GAS
6		M3060	1962	Mercury	Mark30	80	GAS
7							

The comparison of Excel tables available to import by using the Excel Import Plugin and Excel/CSV Sync or Excel/CSV Import features.

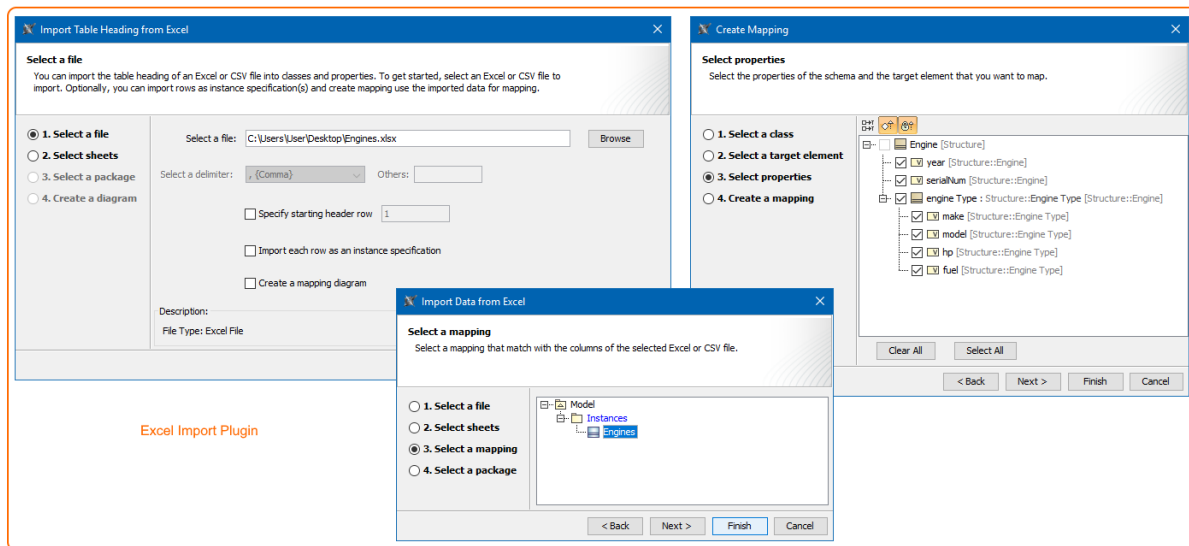
User interface comparison

To import data from Excel or CSV file by using the Excel Import Plugin, three dialogs were used to import table heading, create mapping and import data. The same cases are covered with one dialog depending where you want to import data:

- To the table use the [Excel/CSV Sync Options dialog](#).
- To the model use the [Excel/CSV Import dialog](#).

 You cannot create a diagram when importing data by using the Excel/CSV Sync or the Excel/CSV Import features.

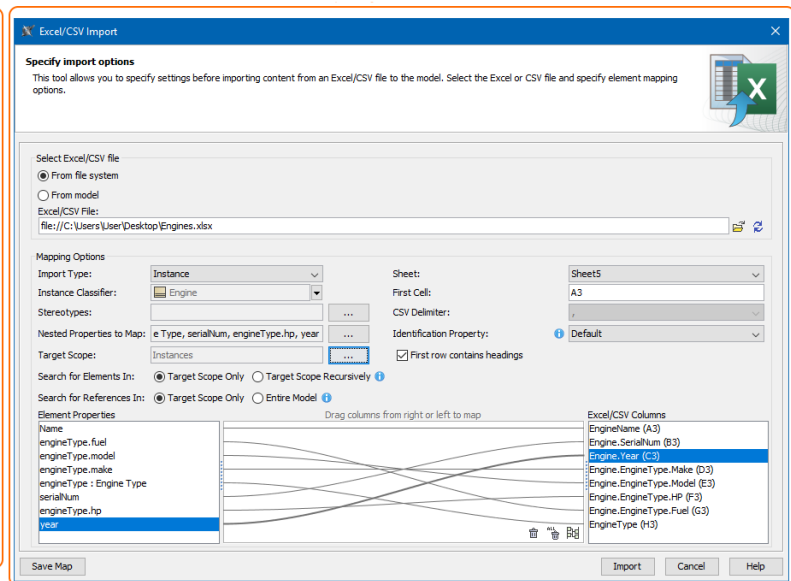
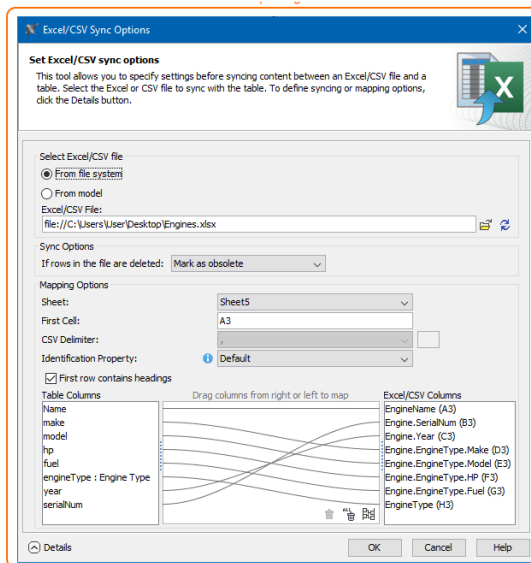
The figure below illustrates the differences between dialogs of Excel Import Plugin and **Excel/CSV Sync Options** or **Excel/CSV Import**.



Excel Import Plugin

When importing to table

When importing to model

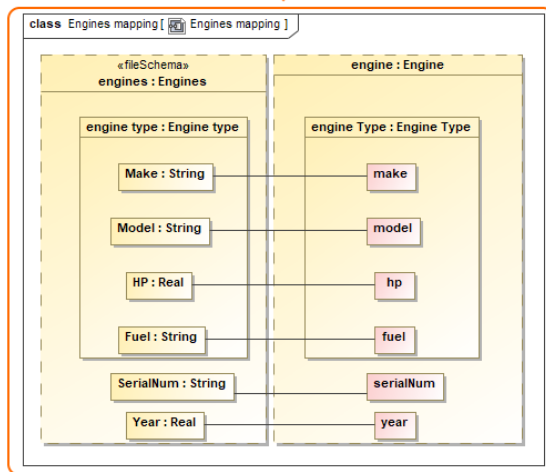
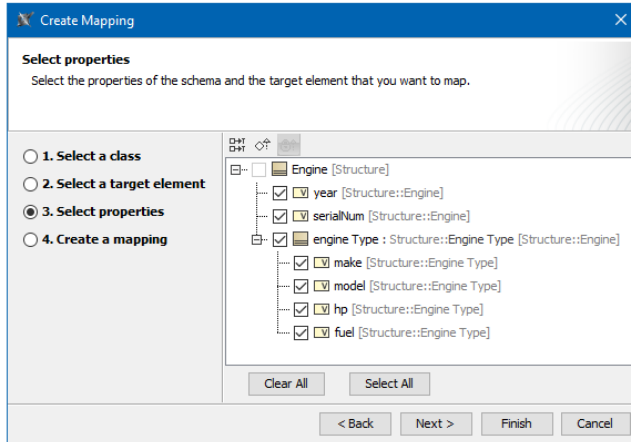


The UI differences between Excel Import Plugin and Excel/CSV Sync and Excel/CSV Import.

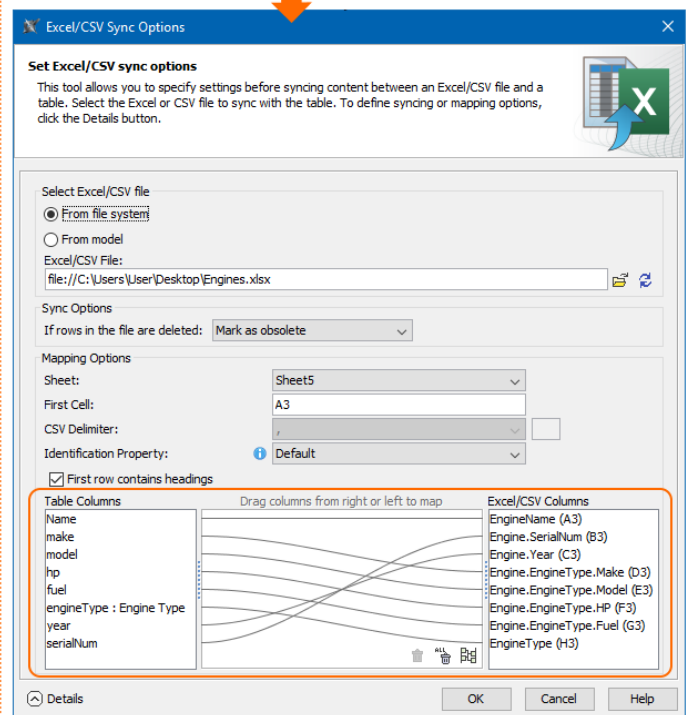
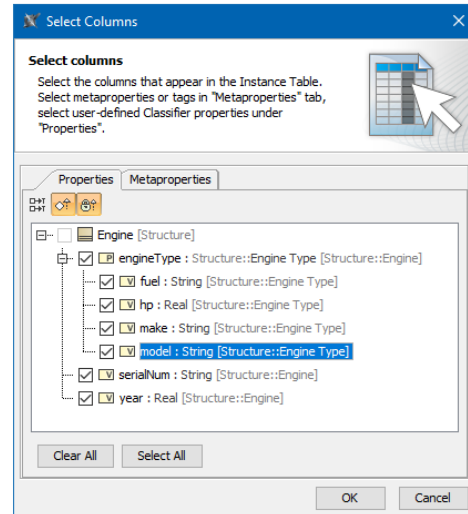
Mapping comparison

The Excel Import Plugin allows you to create mapping in the **Create Mapping** dialog that generates the class diagram. In the **Excel/CSV Sync Options** dialog you create mapping directly in the dialog. The comparison of the Excel Import Plugin and Excel/CSV Sync mappings are provided in the figure below.

Excel Import Plugin mapping



Excel/CSV Sync mapping



The mapping differences between Excel Import Plugin and Excel/CSV Sync.