

Communication diagram elements

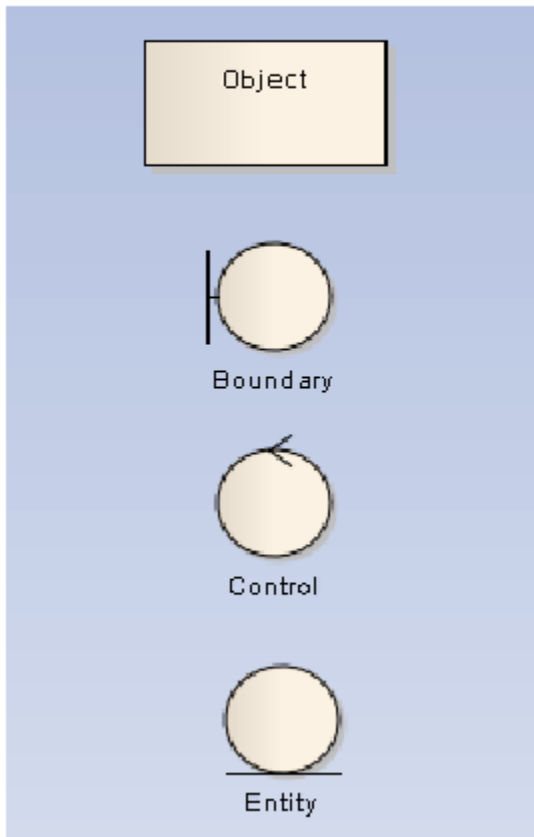
On this page

- [Object, Boundary, Entity, and Control](#)
- [Exception Elements](#)
- [Association](#)
- [Message](#)
- [Operations](#)

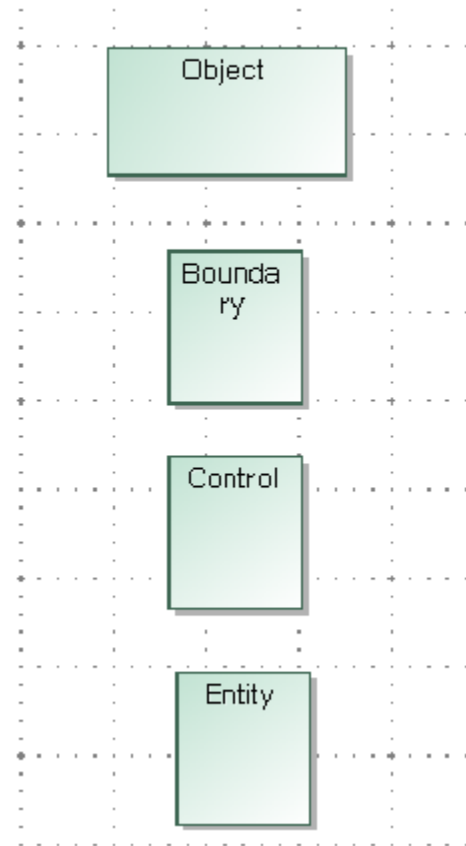
Object, Boundary, Entity, and Control

All Object, Boundary, Entity, Control elements in EA are [InstanceSpecifications](#). After conversion, their UML element types will remain, and a [Lifeline](#) and an [OwnedAttribute](#) element will be created to represent each of them in the [Communication diagram](#) in which they occur.

EA (Before Conversion)

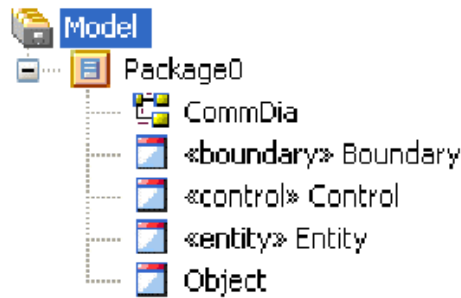


MD (After Conversion)

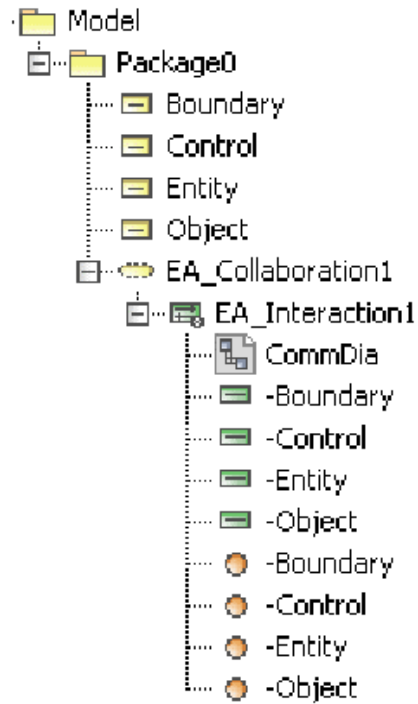


Object, Boundary, Entity, and Control (diagram view).

EA Containment Tree



MD Containment Tree

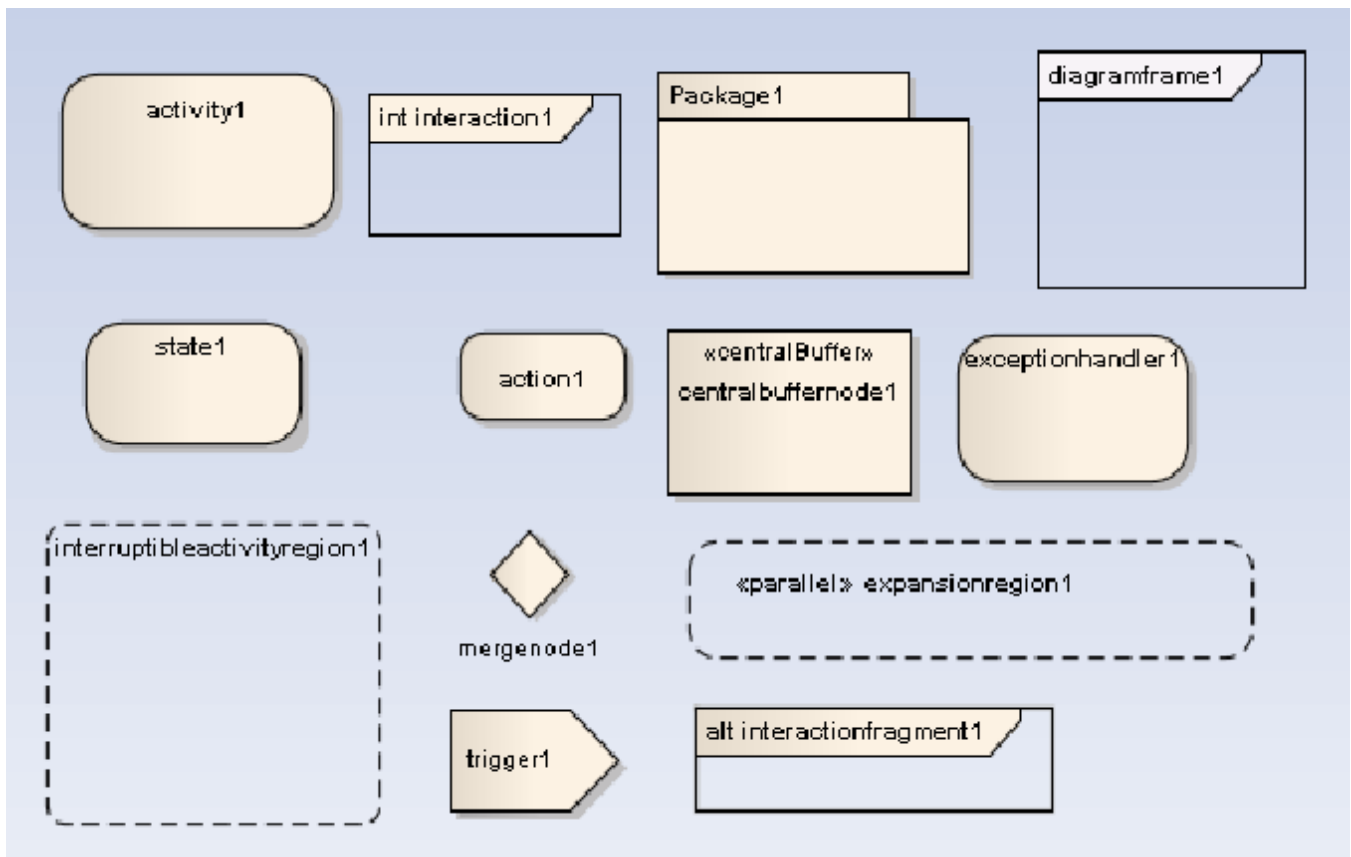


Object, Boundary, Entity, and Control (Containment tree).

Other elements that can be drawn in a Communication diagram will be handled in a similar manner.

Exception Elements

Some of the elements that can be drawn in a Communication diagram using EA are not supported by MagicDraw, CEA, or CSM. Consequently, their displaying parts will not be imported. These elements include [Package](#), [Activity](#), [Action](#), [DiagramFrame](#), [State](#), [Interaction](#), [ExceptionHandler](#), [CentralBuffer Node](#), [InterruptibleActivityRegion](#), [MergeNode](#), [Trigger](#), [ExpansionRegion](#), and [InteractionFragment](#).

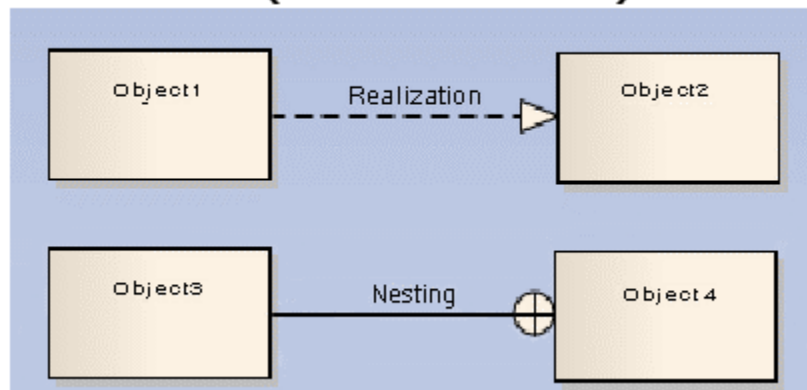


Exception elements.

Realization and Nesting

The Realization element type in EA is *uml:Realization*. The Nesting element type in EA is exported in XML as *uml:Dependency*. The Realization and Nesting lines in EA are not supported in the Communication diagram; therefore, only their model data will be imported, not the displaying parts.

EA (Before Conversion)

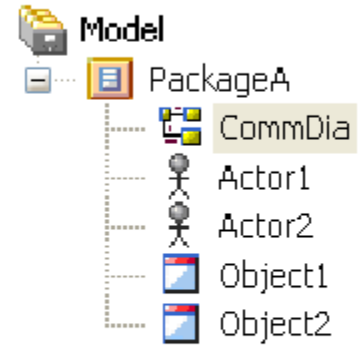
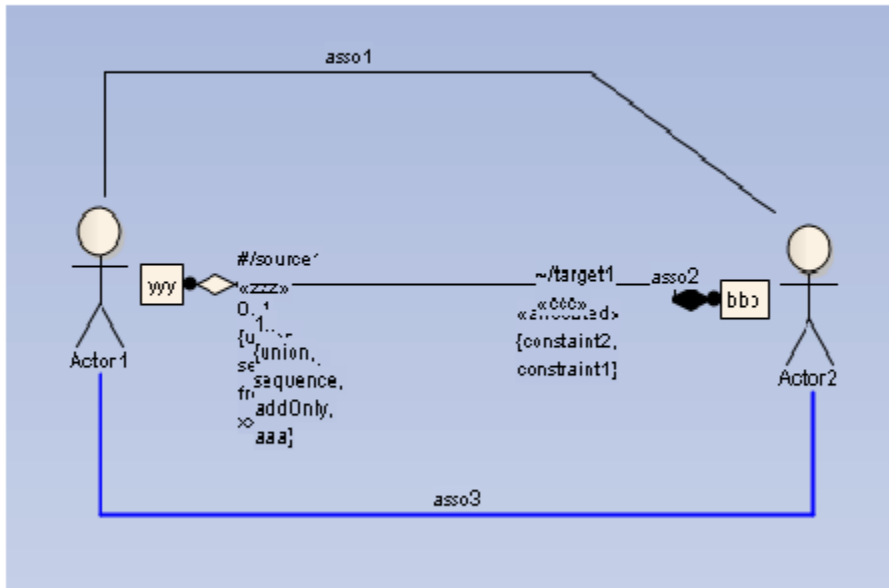


Realization and Nesting.

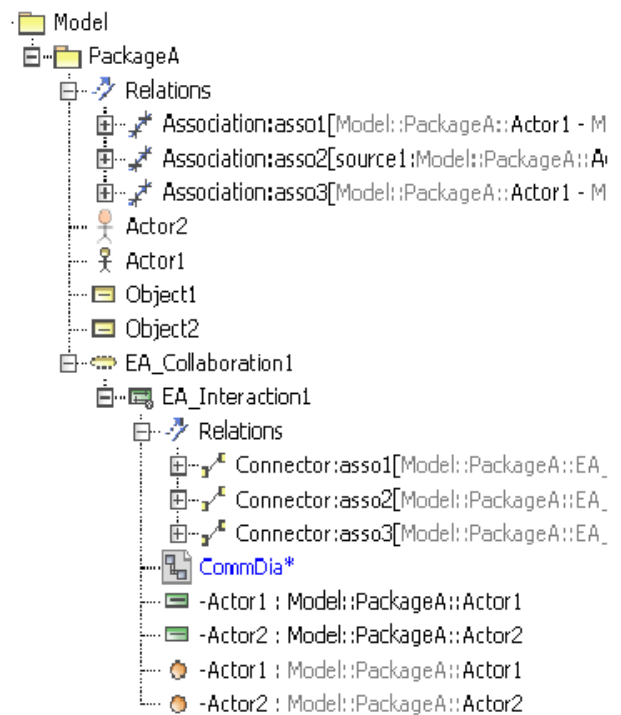
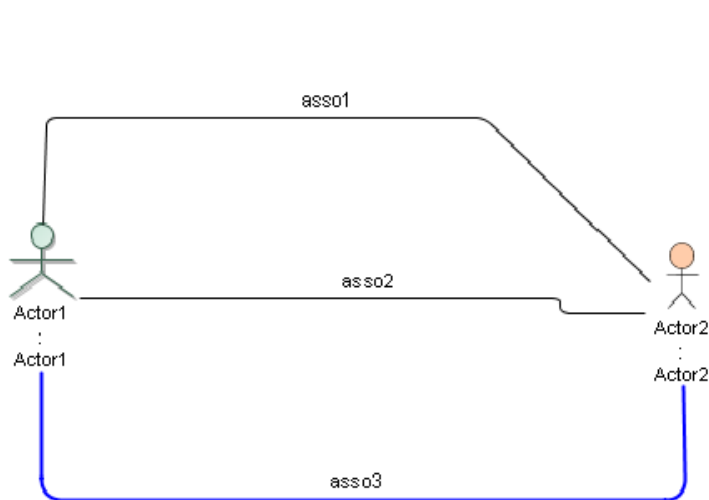
Association

Every Association relationship drawn in a Communication diagram in EA will have a Connector line created for each of them. The elements attached to both ends of the [Association](#) line will have a Lifeline element created to represent each of them. The Association lines and the elements attached to them will not be removed. However, the elements that will be shown in the diagram frame will be the Lifeline elements and the Connector lines created to represent them.

EA (Before Conversion)



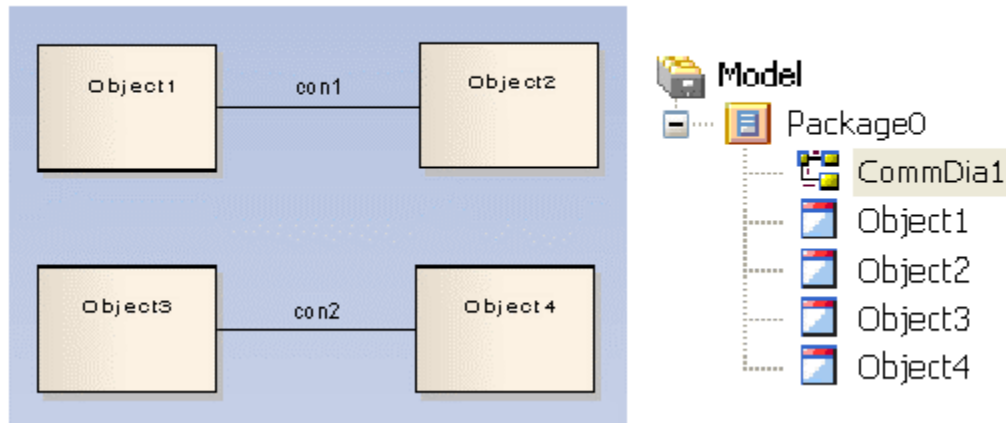
MD (After Conversion)



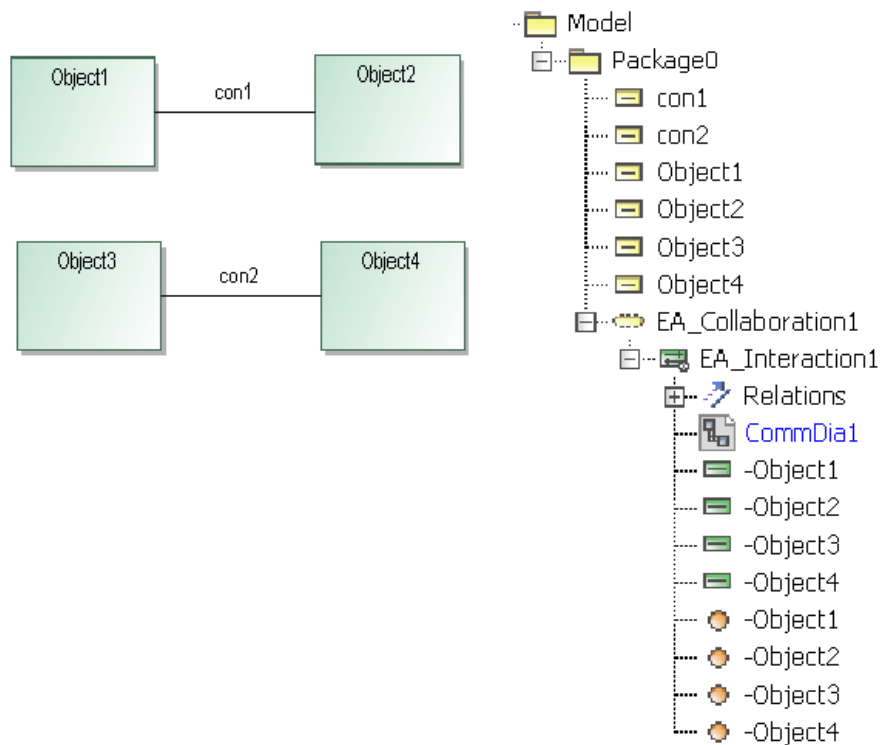
Association.

If an Association line is connected to the InstanceSpecification elements, its data will be removed. If an Association line is linked between two InstanceSpecification elements, it will be transformed into an [InstanceSpecification](#) element. This is one of the constraints belonging to the Communication diagram.

EA (Before Conversion)



MD (After Conversion)

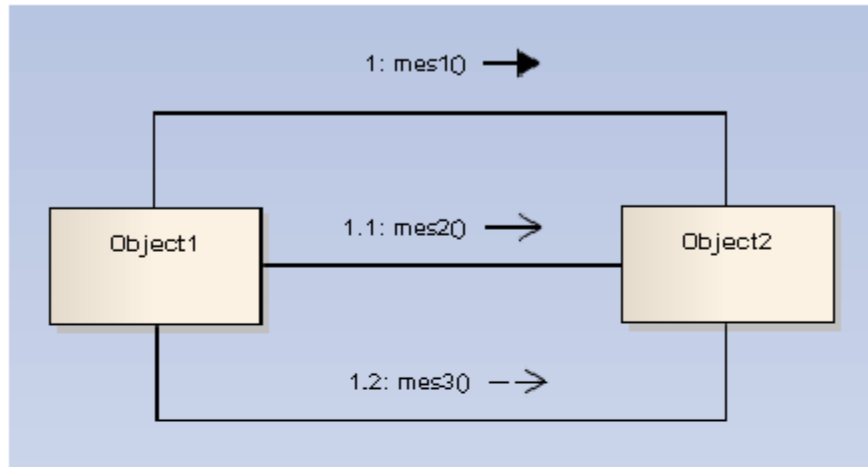


Association Line between InstanceSpecifications.

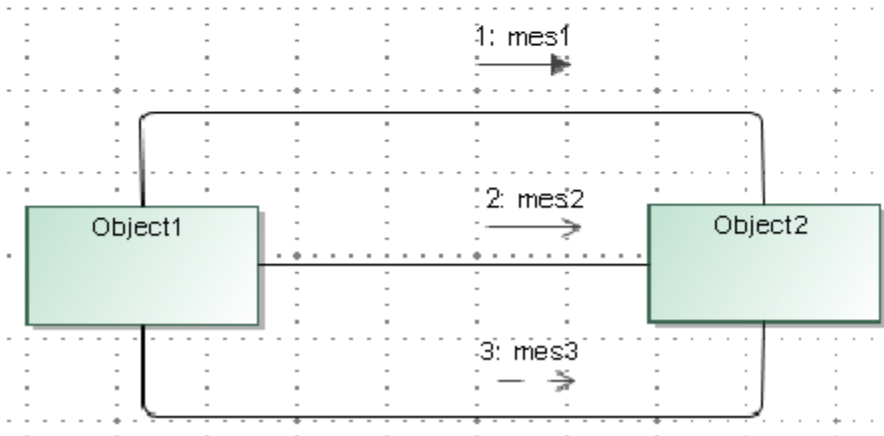
Message

Messages can be created on Connectors and will be imported to MagicDraw, CEA, or CSM.

EA (Before Conversion)



MD (After Conversion)

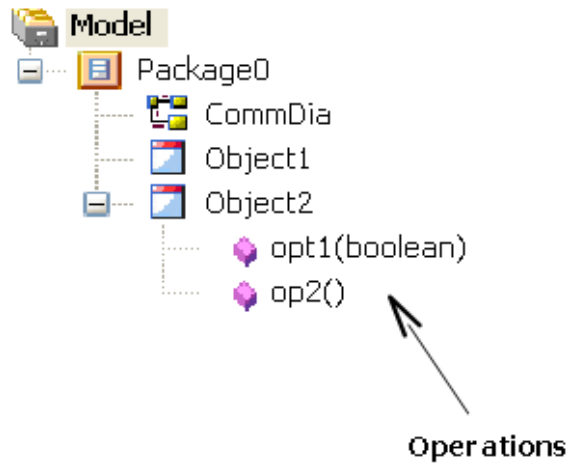


Message.

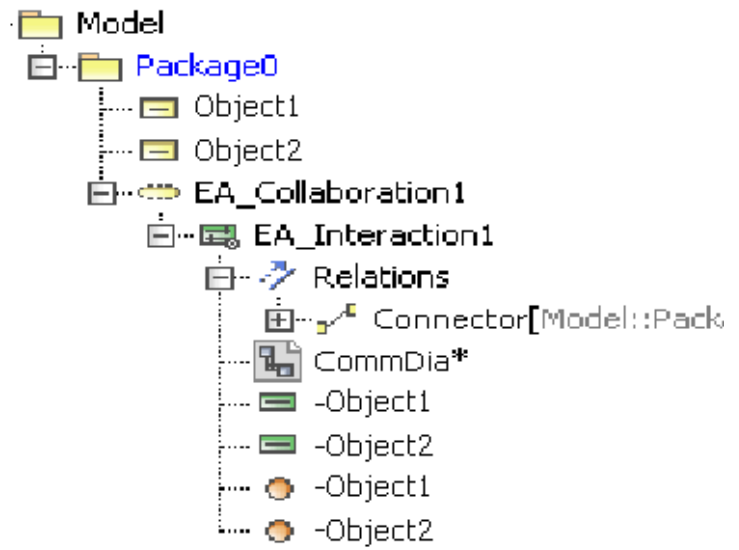
Operations

An InstanceSpecification cannot contain Operation elements. If the XMI file from EA has some InstanceSpecification elements containing Operation elements, those Operations will be removed.

EA (Before Conversion)



MD (After Conversion)



Operations.

Related pages

- [Communication diagram](#)