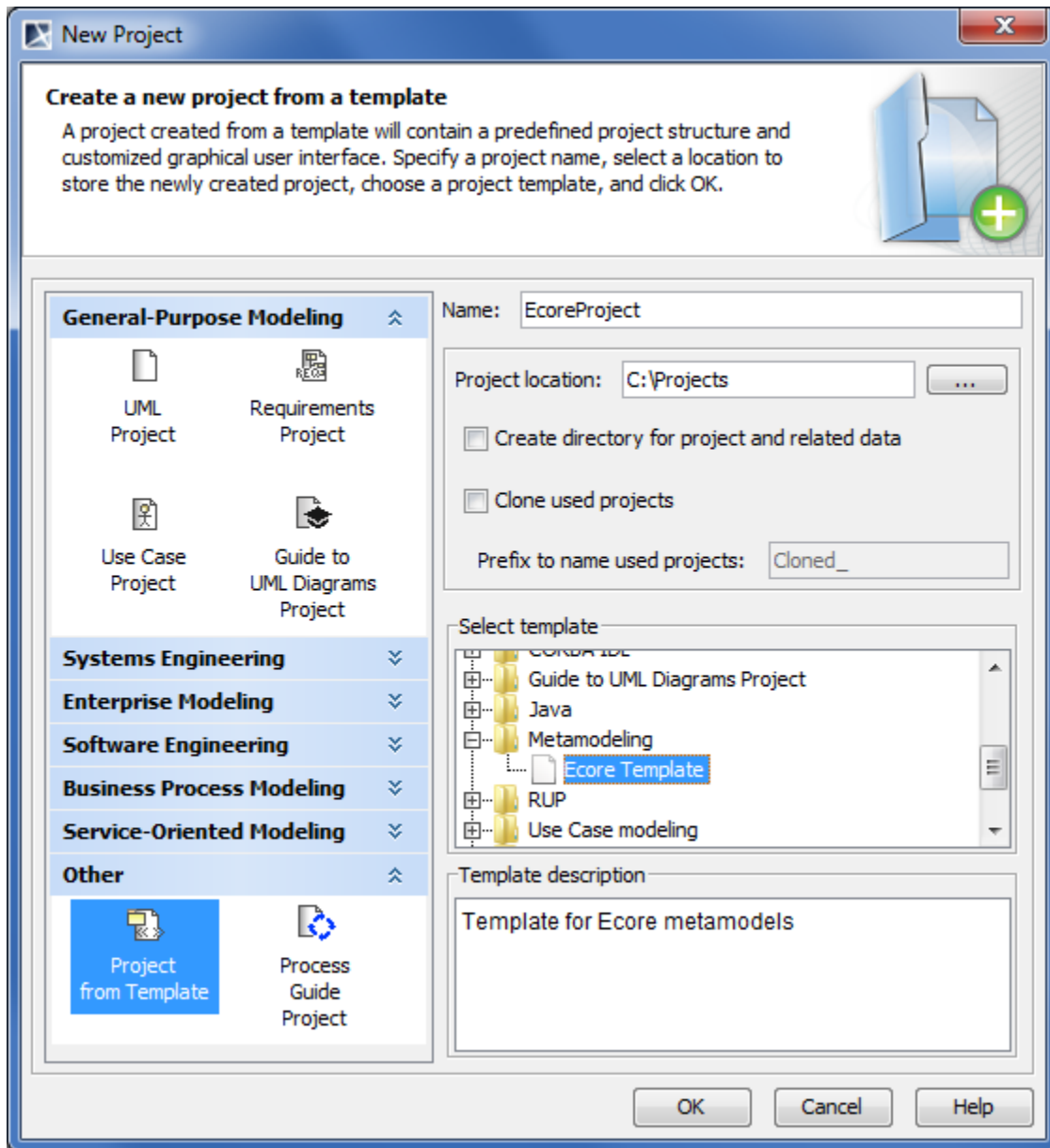


Creating projects for Ecore modeling


You can use the following ways to create a project for Ecore modeling:

To create a new project from the Ecore template

1. From the main menu, select **File > New Project**. The **New Project** dialog opens.
2. In the **Other** domain, select **Project from Template**.
3. Type a project name.
4. Specify the project location.
5. Under **Select template**, expand **Metamodeling** and then select **Ecore Template**.
6. Click **OK** when you are done.

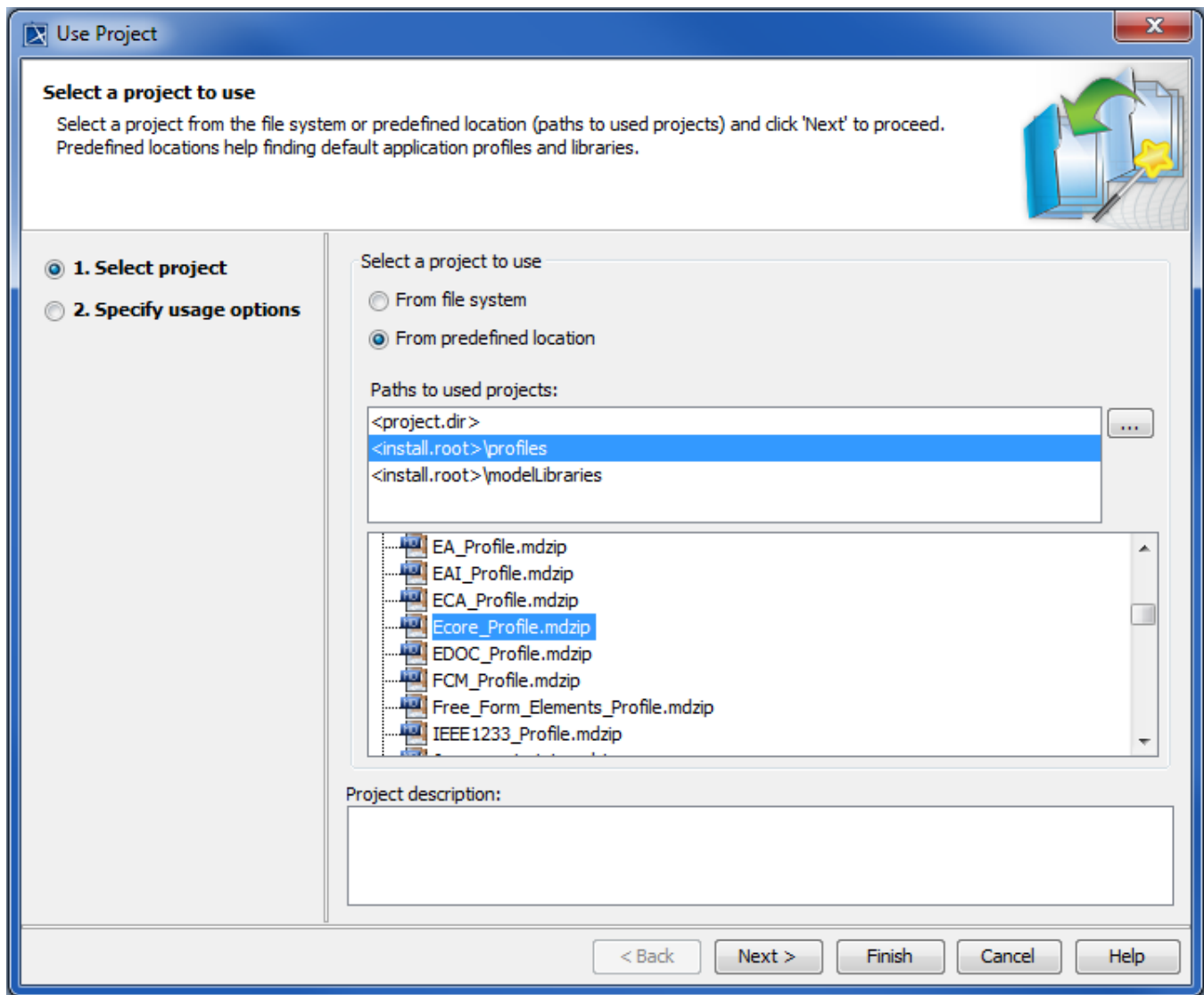


To apply the Ecore profile to a project

 The Ecore profile can be applied only to existing UML or CMOF / EMOF projects.

1. From the main menu, select **File > Use Project...** The **Use Project** wizard opens.
2. Under **Select a project to use**, click **From predefined location**. The **Paths to used projects** list appears.

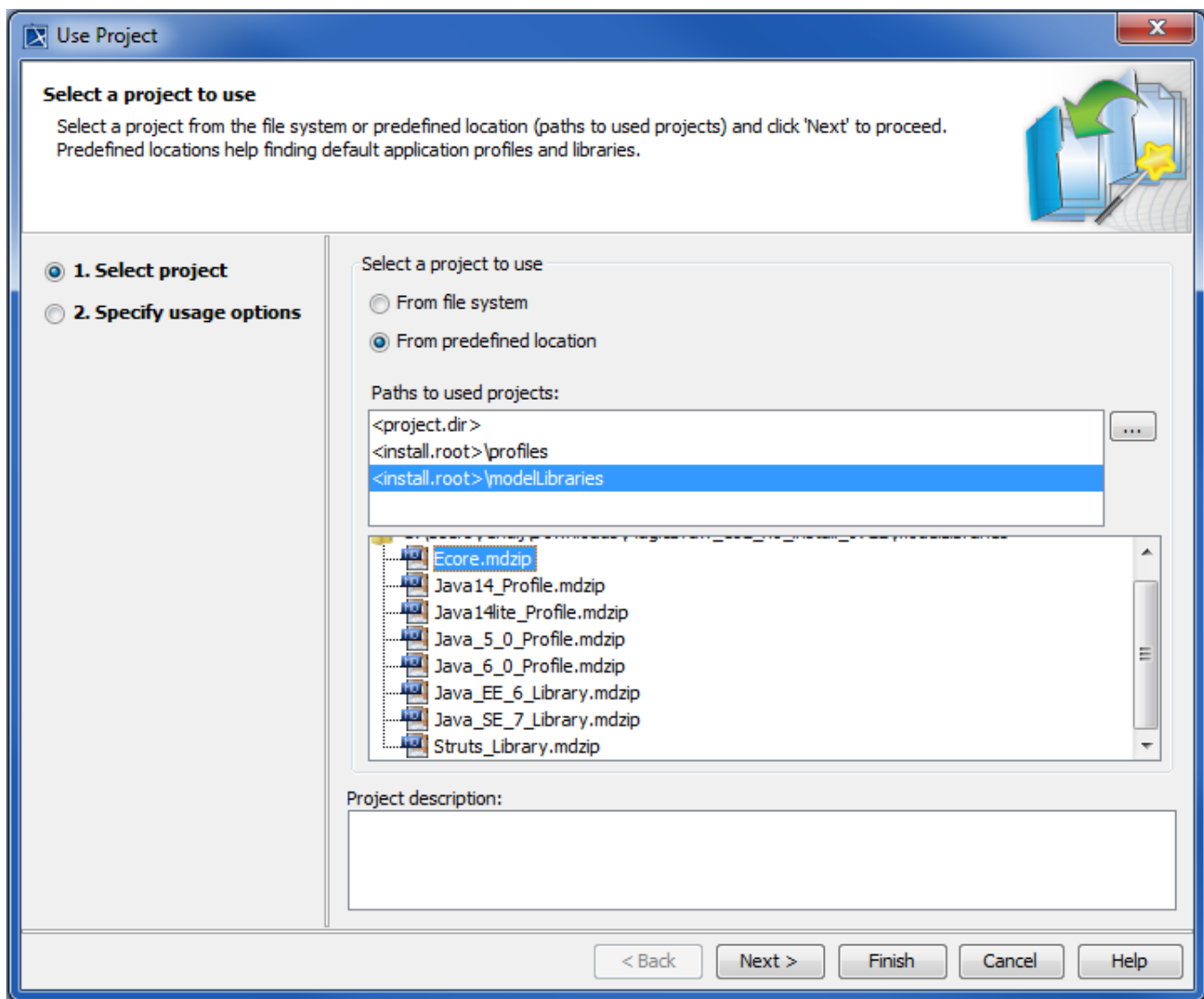
3. Select `<install root>\profiles`. The content of the `<install root>\profiles` folder is listed below.
4. Select `Ecore_Profile.xml` in the list.
5. Click **Next**, if you want to change used projects usage settings.
6. Click **Finish**.



If your Ecore model references some standard Ecore elements (such as standard data types (for example, EShort) or standard metaclasses (for example, EStructuralFeature), you need to use the standard Ecore library in your project.

To use the standard Ecore library in a project

1. From the main menu, select **File > Use Project...** The **Use Project** wizard opens.
2. Under **Select a project to use**, click **From predefined location**. The **Paths to used projects** list appears.
3. Select `<installroot>\modelLibraries`. The content of the `<install root>\modelLibraries` folder is listed below.
4. Select `Ecore.mdzip` in the list.
5. Click **Next**, if you want to change used projects usage settings.
6. Click **Finish**.



Related pages

- [Creating new projects from templates](#)