

Module artifact of DOORS Next Generation

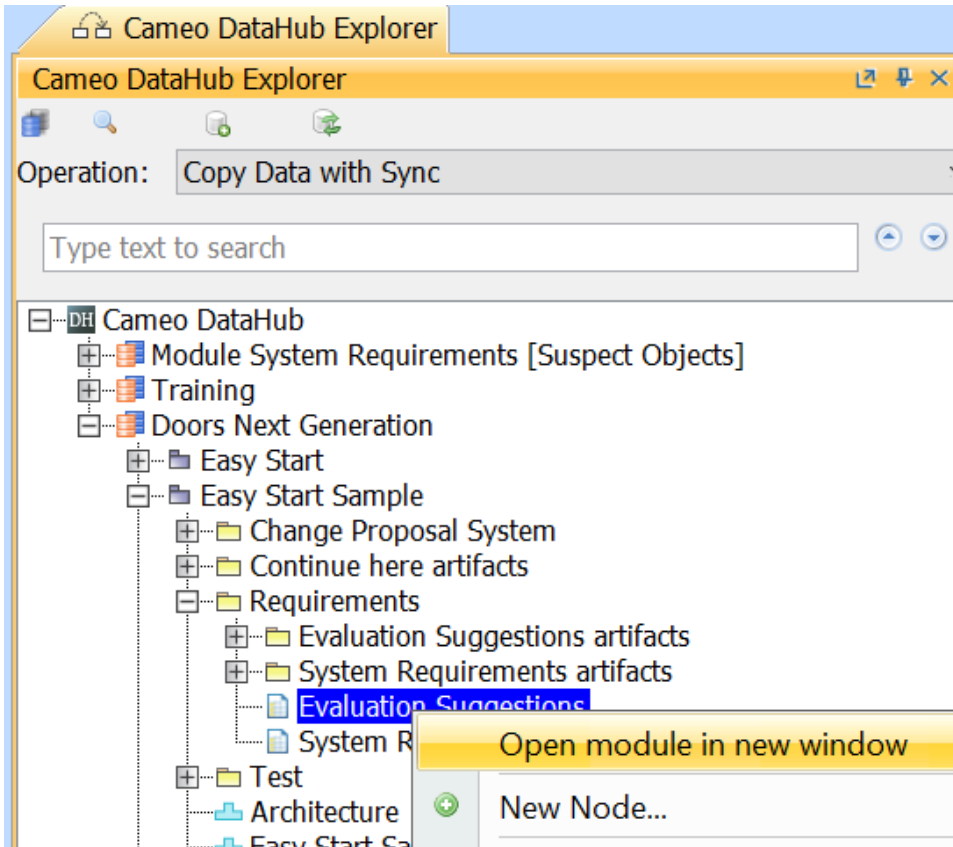


Note

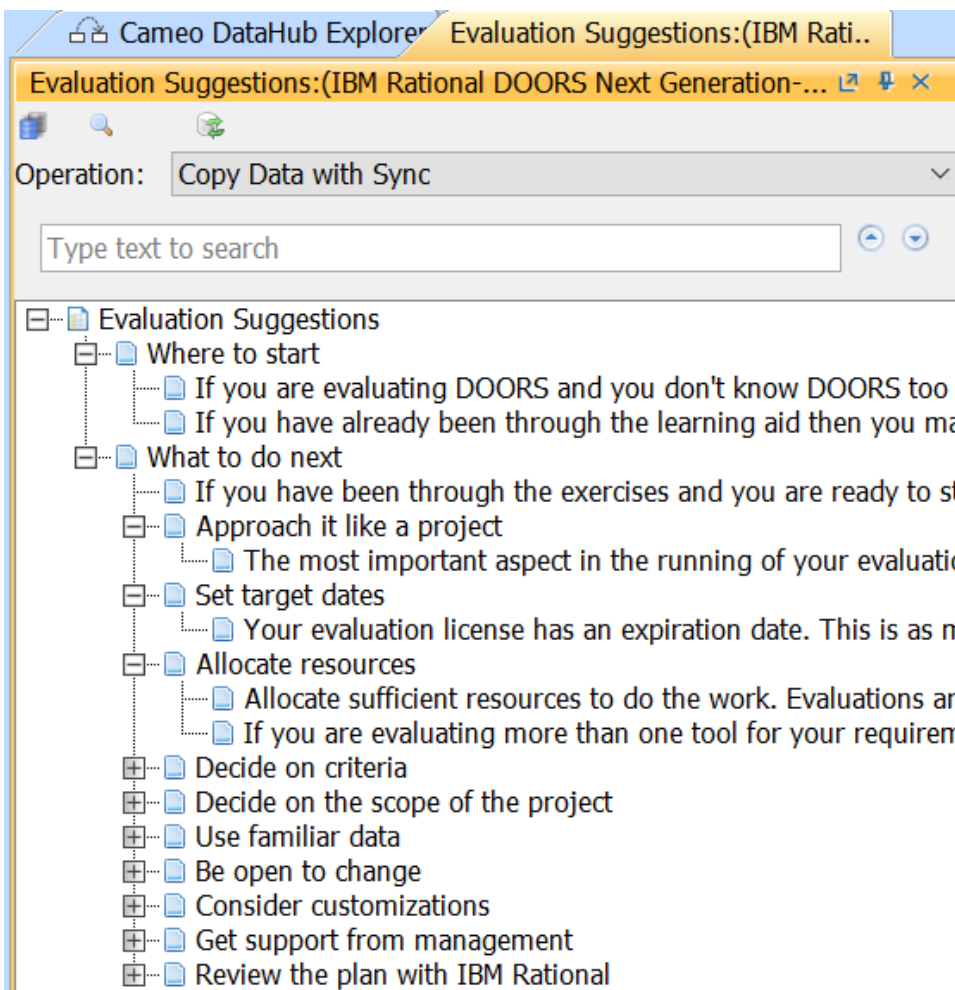
Since artifacts in the module and their hierarchy do not reflect the original ones, DataHub will treat artifacts in the module separately apart from the original artifacts out of the module.

To open the module in a new tab

- Right-click the module artifact and select **Open module in new window**. The module will be open in another tab.



Using the Open module in new window command to open a DOORS Next Generation module artifact in a new tab.



The selected Evaluation Suggestions DOORS Next Generation module artifact is open in a new tab.