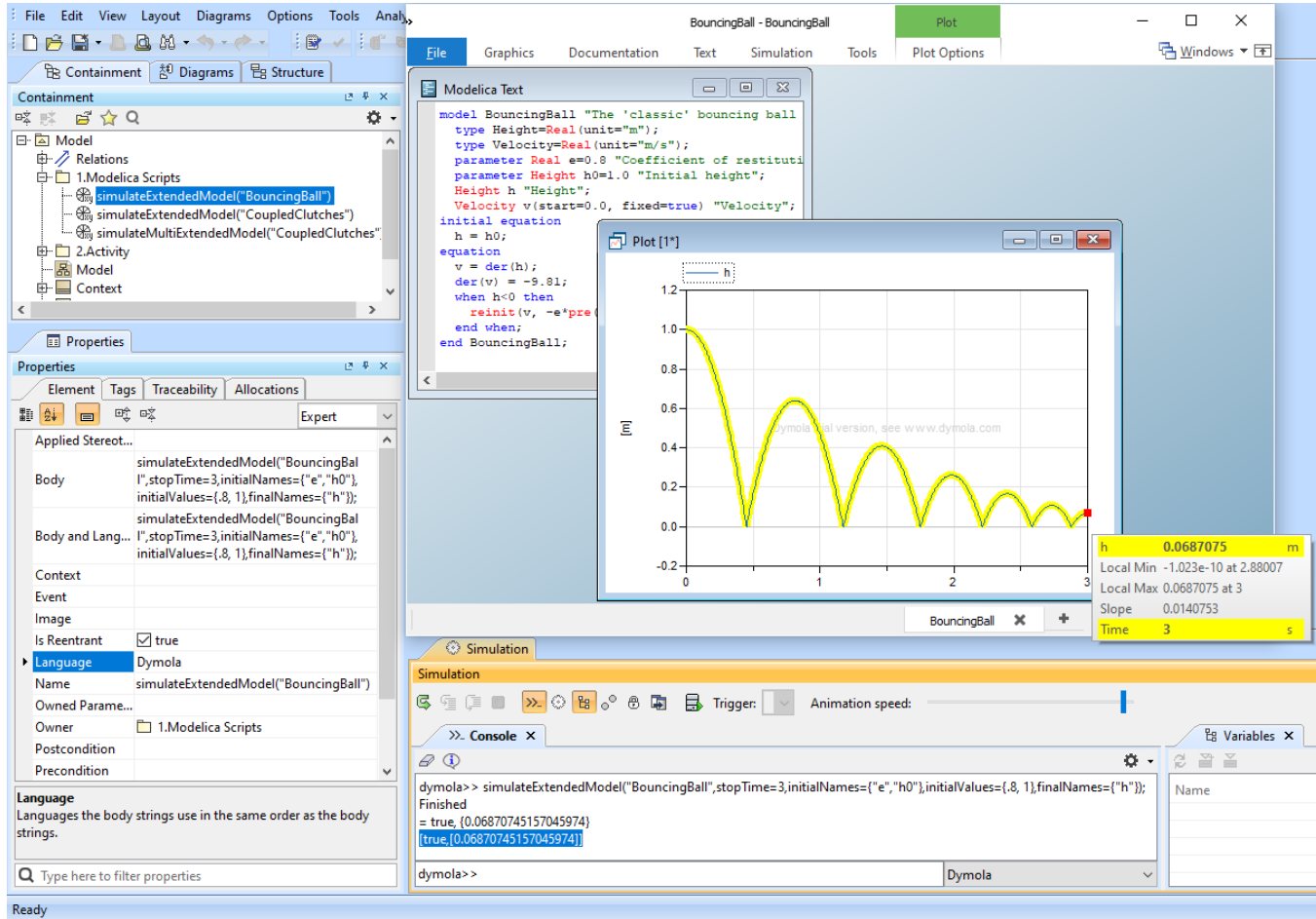


# Integration with Dymola

Simulation supports integration with [Dymola](https://www.3ds.com/products-services/catia/products/dymola/) (2021x and later), the outstanding Modelica and simulation technology. Integrating Simulation with Dymola allows you to specify Dymola as a language of Opaque expressions. You can download and install Dymola from <https://www.3ds.com/products-services/catia/products/dymola/> and set up your modeling tool to allow integrating with Dymola.

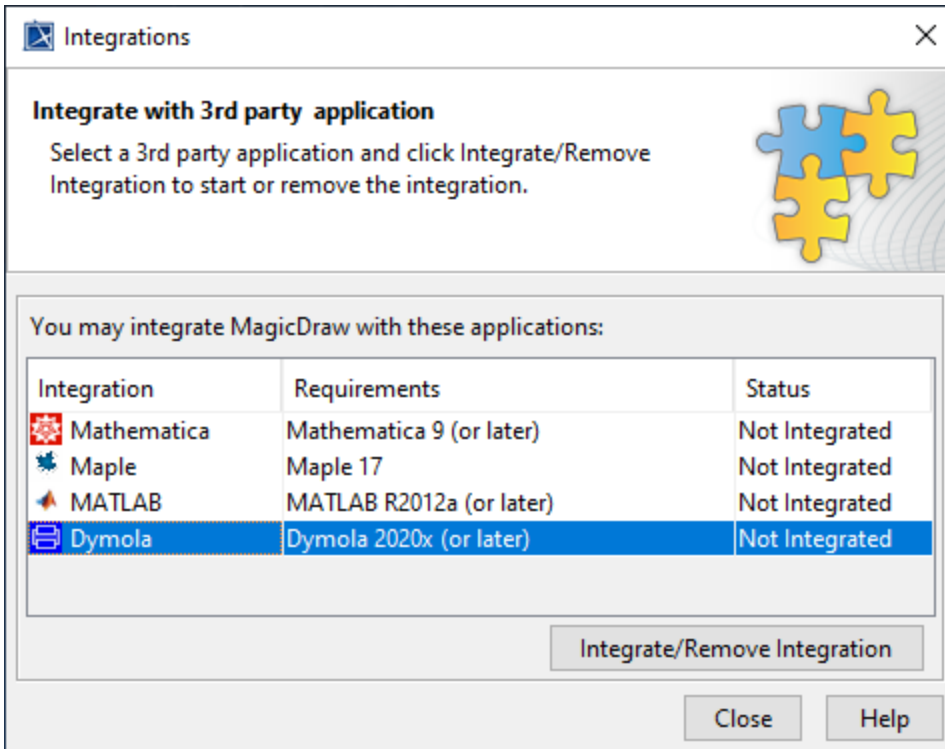
After successful integration, Dymola will be listed where language selection is available, e.g., through the language option in the **Simulation Console** pane. Simulation will then be able to process Modelica commands from the **Simulation Console** pane as the image below.



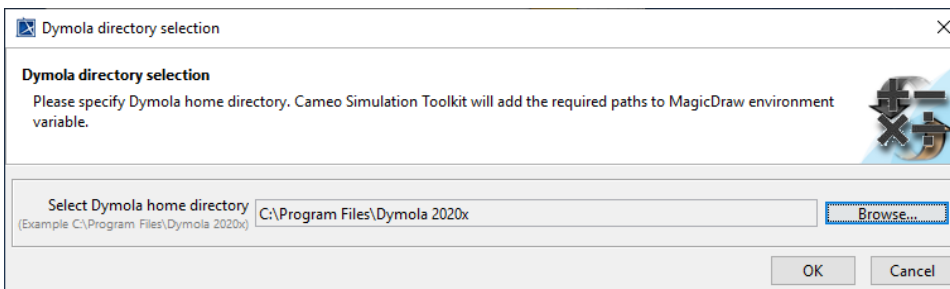
Simulation processes Modelica commands after the successful integration with Dymola.

To integrate Simulation with Dymola

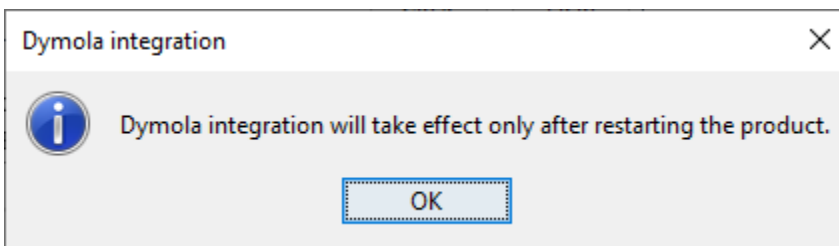
1. On the modeling tool main menu, select **Tools > Integrations**. The **Integrations** dialog opens.



2. Select **Dymola** (the **Not Integrated** status by default) and click **Integrate/Remove Integration**.
3. The **Dymola directory selection** dialog opens. Click **Browse** to select the Dymola home directory and click **OK**.



4. The **Dymola integration** dialog will be shown. Click **OK**. The Dymola integration status will change to **Integrated**.



5. Restart the modeling tool to complete the integration.



#### Note

- Dymola integration does not support Linux or Mac operating systems (only Windows).
- For Teamwork Cloud projects, the model file must be attached only to the project so that the working directory of Dymola will be automatically set to the temp folder of the modeling tool, e.g., `C:\Users\ABC1\AppData\Local\magicdraw_12021x\tmp\2020-11-23-13-32-34\attachedFiles`.