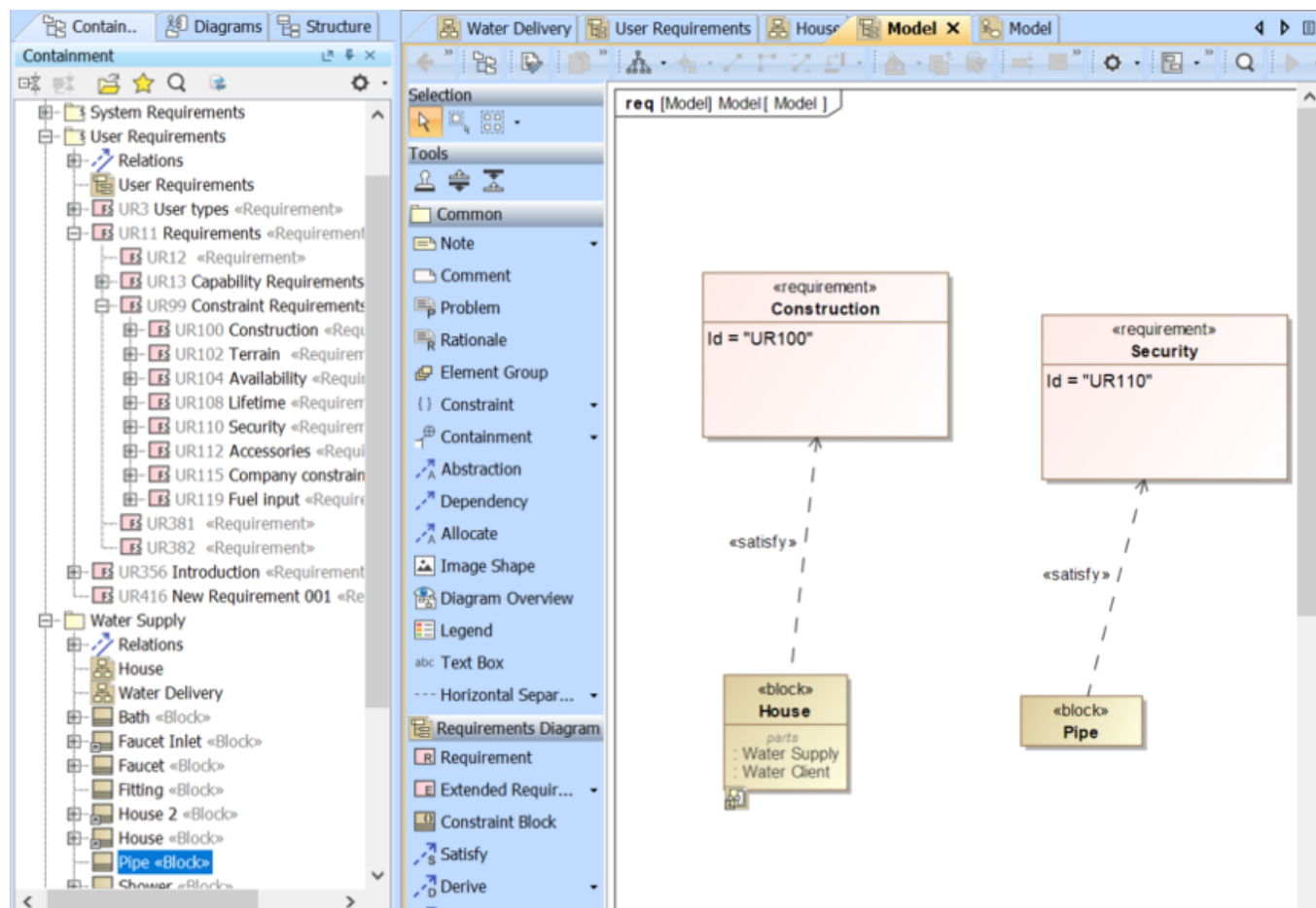
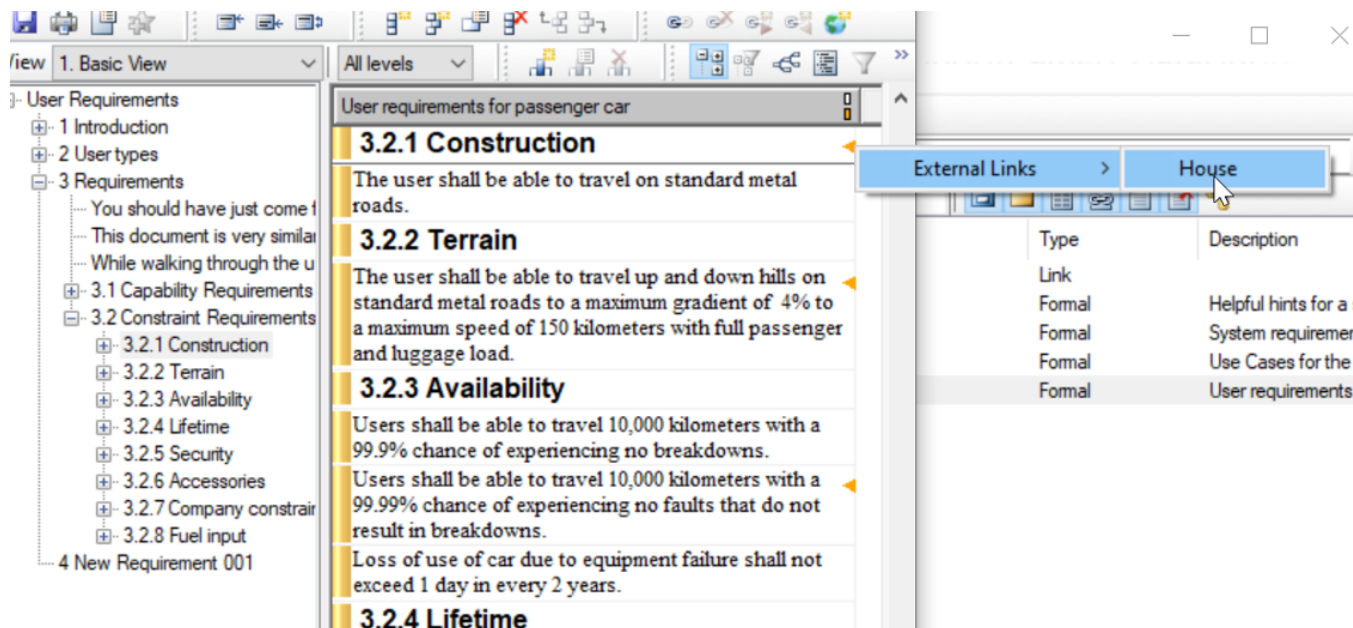


# Synchronizing DOORS External Links

After Requirements are synchronized from DOORS, they can have Relationships, e.g., **Satisfy** or **Derive**, with other elements in the model. In this version, DataHub can synchronize these Relationships back to DOORS and create External Links that help display and navigate to those relationships with related model elements.



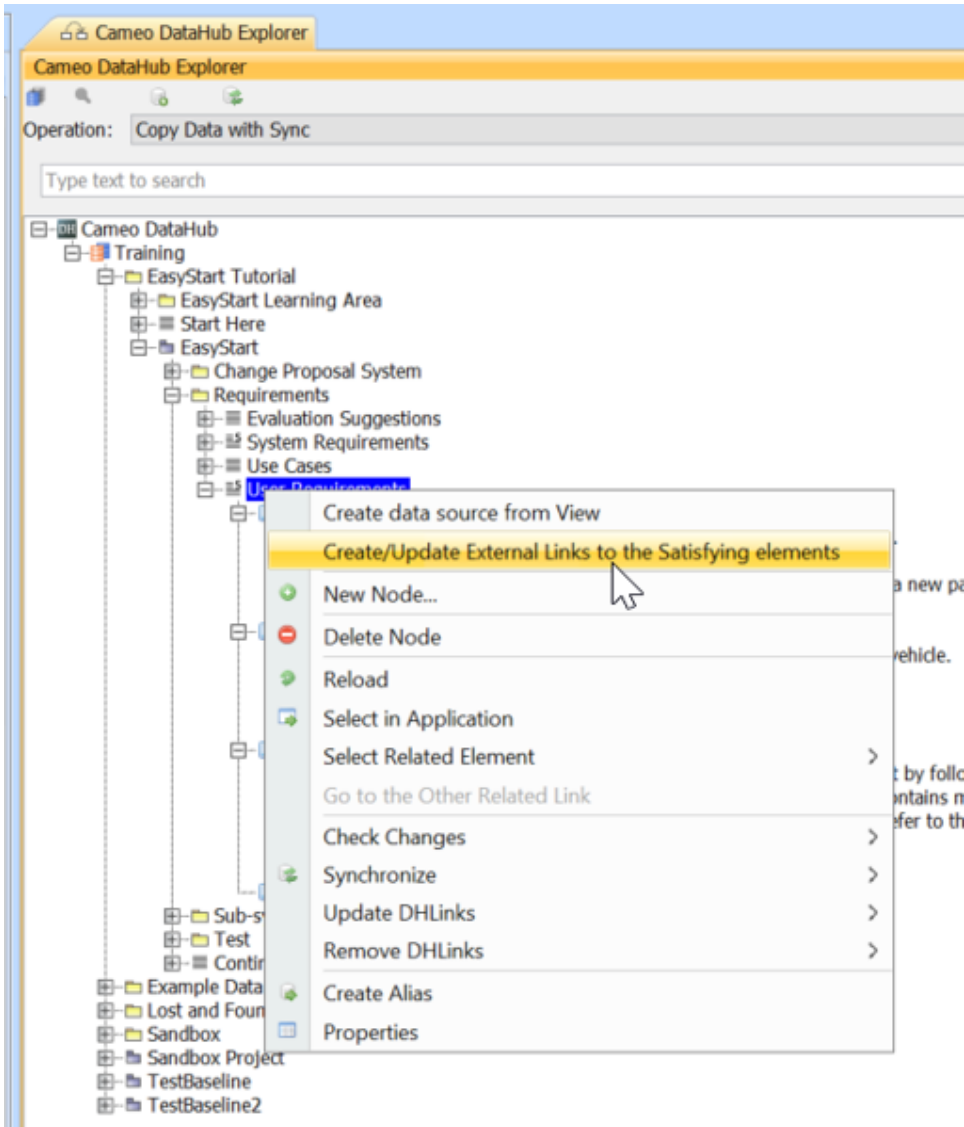
DataHub synchronizes Relationships back to DOORS and creates External Links to display and navigate to those relationships.



The External Link in DOORS displaying the Relationship and navigating to the related model element.

To synchronize a related element in the model with Requirements in DOORS as an External Link

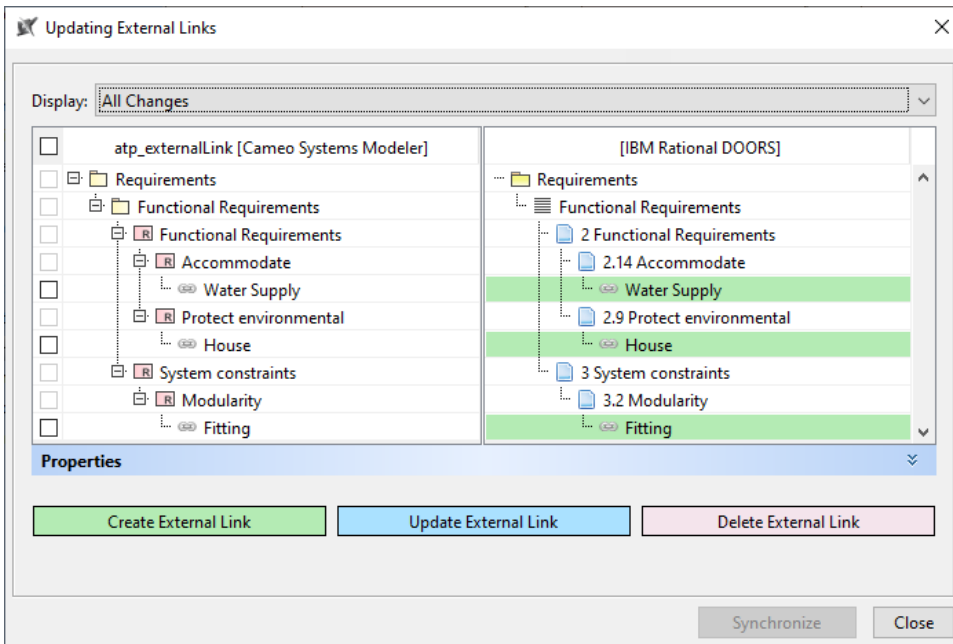
1. Right-click the module or parent node of Requirements and select **Create/Update External Links to the Satisfying elements**. The External Link will be created in the Requirements that contain Relationships in DOORS.



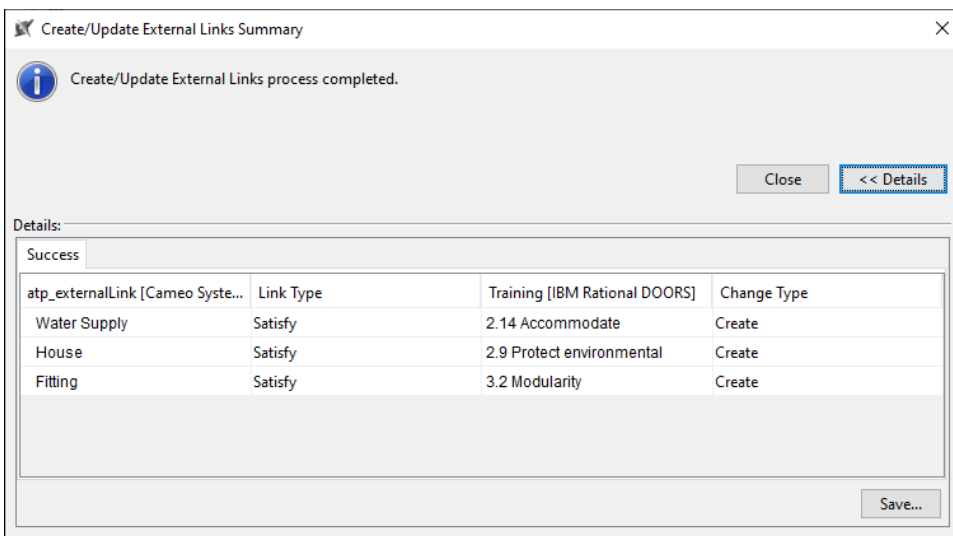
#### Note

If you have selected the root node of the Sync Scope, the **Create/Update External Links to the Satisfying elements** operation will recursively detect the changes. Otherwise, only the selected node will be checked.

2. The **Updating External Links** dialog opens to show the synchronizing actions of the selected module or parent node of Requirements. Click **Synchronize** to proceed the actions.



3. The **Create/Update External Links Summary** dialog opens to show the summary of External Links that have been created or updated. Click **Close** to complete the External Link synchronization.



#### Note

External Links will be created with or deleted from Requirements in DOORS according to the Relationships in the model.