

# 2021x Version News

Magic Cyber Systems Engineer

Released on: February 12, 2021

Version 2021x adds the ability to use layers in diagrams, automatically create legends, present diagrams or predefined sequences of diagrams in full screen to stakeholders, create compositions and aggregations in matrices, and use predefined element type filters when searching for the necessary model elements. Additionally, the usage of Simulink import and Modelica export has been extended with few enhancements, the Excel/CSV file import functionality has been reviewed and refreshed, and numerous improvements to Excel/CSV synchronization functionality in tables have been added.

Few powerful simulation features will change the way you simulate your models by using diagrams as a simulation dashboard. For your convenience, streaming behavior simulation is now supported and simulation options have been moved to Project Options, animation-delay affects only visible diagrams to provide better user experience, guard evaluation on transitions expressed in natural language are now interactive, and more.

This release brings significant performance and scalability upgrades in key product areas: Merge, Teamwork Cloud project load, Teamwork Cloud project saving, table loading, Excel and CSV files import, and such common modeling tool operations as Copy/Paste, Find, Numbering, Element Selection, and Validation.

Last but not least, project merge has been extended to give users the option to show only the changes in directly modified diagrams, hide Target and Equivalent Changes by default, and choose a specific ancestor calculation algorithm depending on merge scenario and expected outcome.

## Modeling and Infrastructure

- Layers Based on Legends
- Intelligent Legend Creation
- Presentation Mode
- Renewed Excel/CSV File Import
- Extended Excel and CSV Sync
- Composition and Aggregation Relationships in Dependency Matrix
- Other Improvements

## Simulink and Modelica Integration Improvements

- Proxy Ports in FMU and Simulink Import
- Simulink Model Import to Activities
- Simulink Composite Signals Export
- IBD-based Selective Modelica Export

## SysML 1.6 Support

### Simulation

- HTML Widgets in IBD Diagrams
- Streaming Activity Simulation
- Displaying and Changing Runtime Values in Diagrams
- Displaying Active State in Diagrams
- Displaying Active State Images
- Displaying Flowing Information
- Sending a Trigger in Diagrams
- Reorganized Simulation Options
- Animation Delay Logic
- Interactive Guard Evaluation for STM and Sequence Diagrams
- Simulink Co-Simulation in Activity Diagrams
- Other

## Client-side Performance Improvements

- Partial Data Loading in Tables
- Increased Excel and CSV files Import Speed
- Common Operations
  - Copy/Paste
  - Find
  - Numbering
  - Element Selection
  - Validation
- Profiling Changes in the UML 2.5.1 Metamodel

## TWC-related Performance Improvements

- Project Merge Improvements
- TWC Project Load Memory and Speed Improvements
- TWC Disk Footprint Improvements

## System Requirements

### Discontinued Products

- From Teamwork Server to Teamwork Cloud
- From Cameo Collaborator for Alfresco to Cameo Collaborator for Teamwork Cloud

### Collaboration

- Detecting Changes in Diagrams During Merge
- Further Merge Usability Improvements

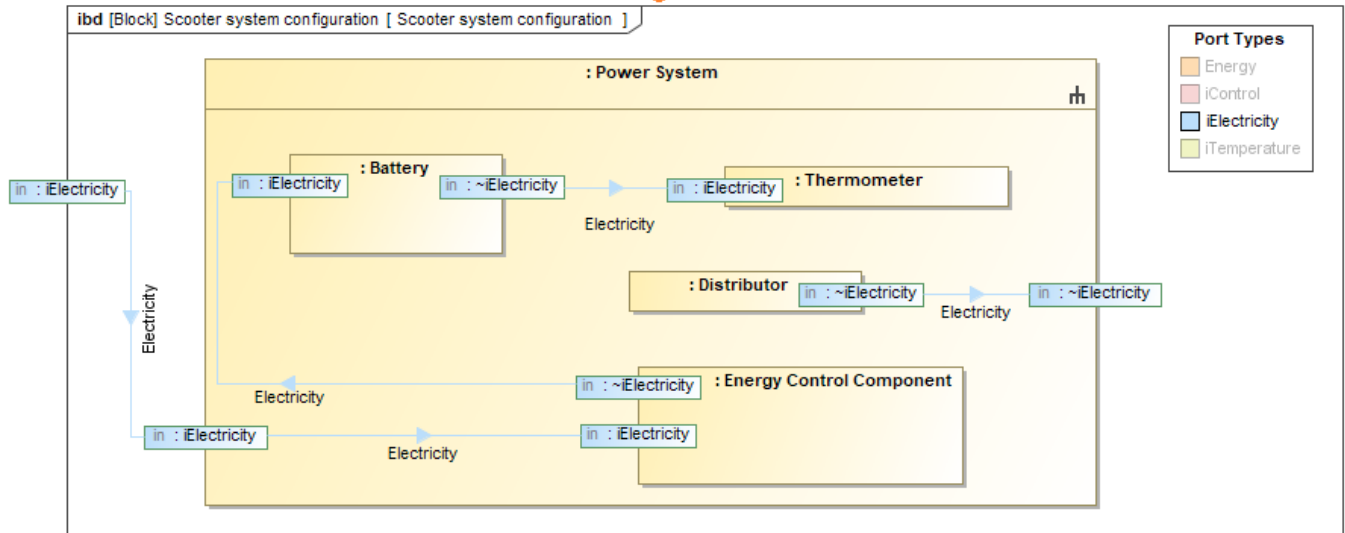
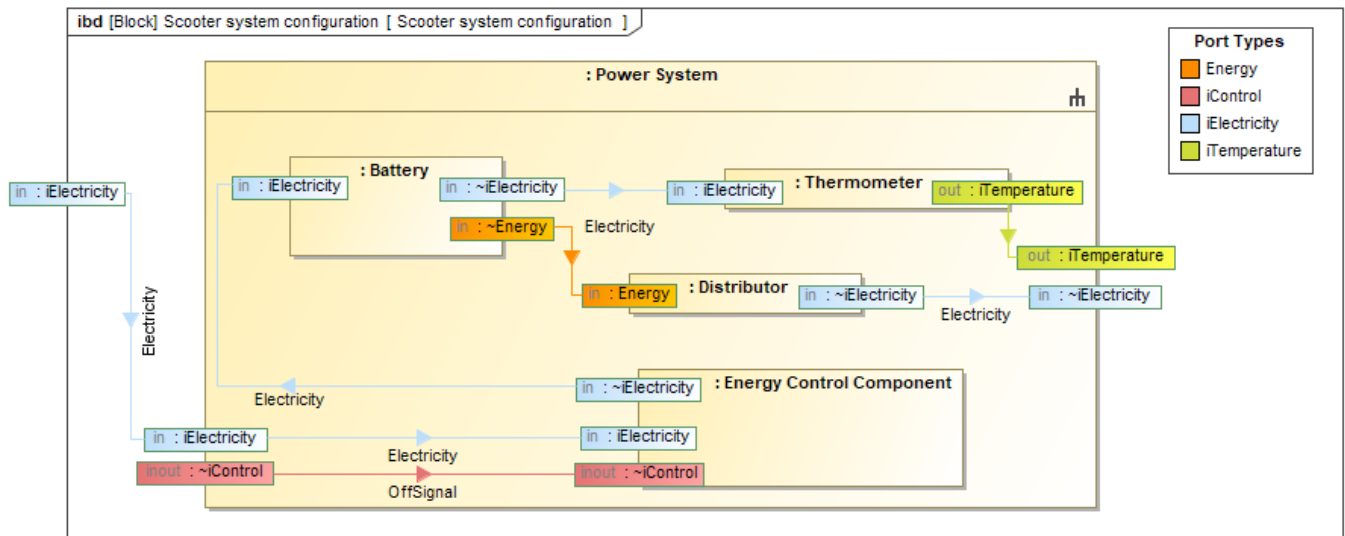
### Other Features

- Report Wizard
- Key Issues Fixed

## Modeling and Infrastructure

### Layers Based on Legends

Diagrams can get extremely crowded as a model evolves. For example, when highlighting a chosen piece of information, only one specific aspect of the system becomes a challenge. For your convenience, you can now filter diagrams by the selected Legend items to make only the necessary diagram layers stand out.



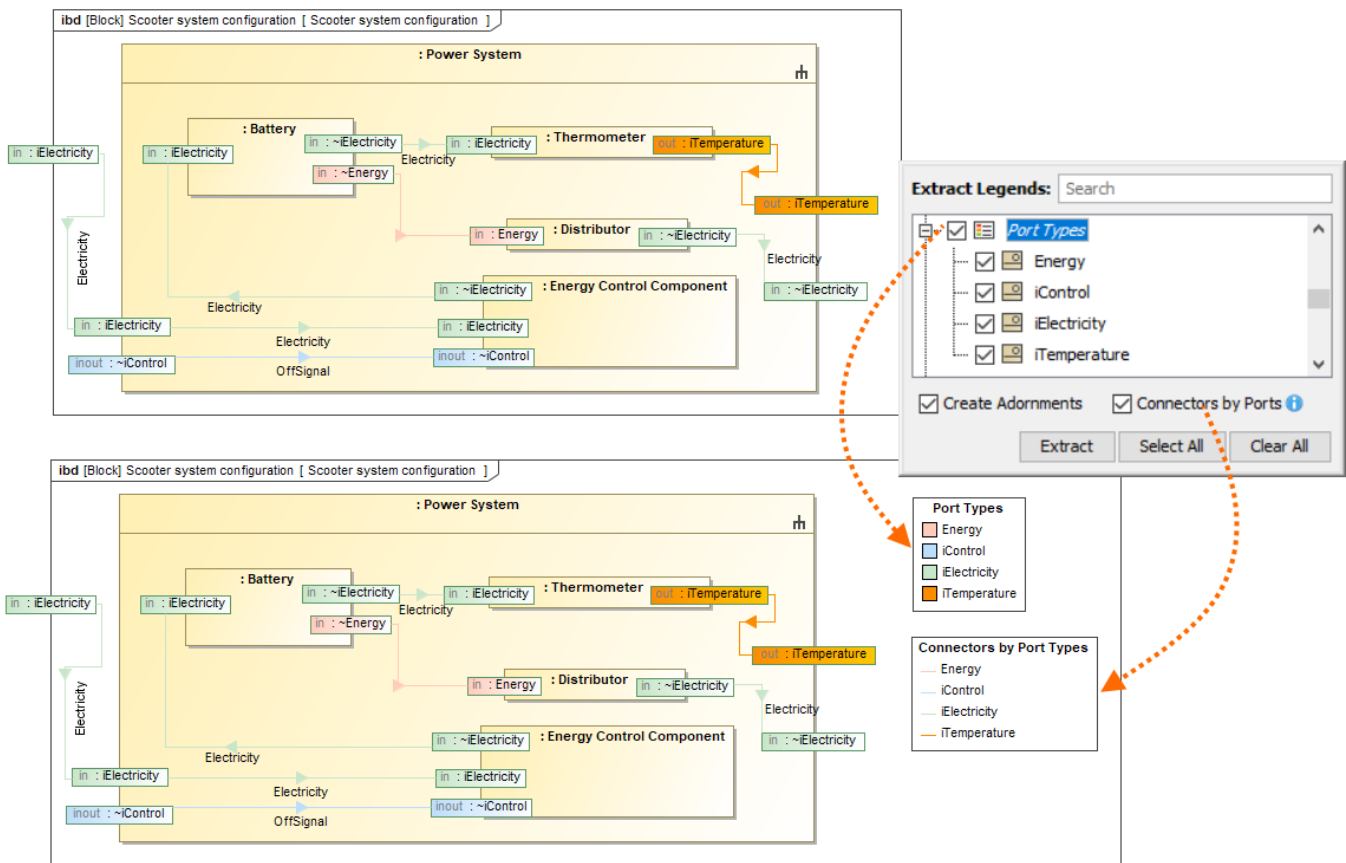
Filtering the diagram by the selected Legend item.

[Learn more about layers based on Legends >>](#)

[Back to top](#)

## Intelligent Legend Creation

Seems like Legend creation is a tiresome activity? Not at all! From now on, you can create Legends easier than ever before – extract them automatically from the elements displayed on your diagram instead of relying on a manual creation. What is more, you can now automatically extract Legend items for the existing Legends. Once the Legend items are created, you can customize their adornments representation. They can now be displayed as rectangular shapes or extended lines to represent paths and shapes in greater detail.



Extracting the Port Types legend according to the elements displayed on the diagram as symbols.

[Learn more about extracting Legends >>](#)

[Back to top](#)

## Presentation Mode

Direct the attention of your audience to the diagrams being presented! You can now present diagrams in full screen without showing such user interface components as model browser, diagram palette, status bar, and toolbars. That is not all! You can also define the sequence of diagrams to present one after another.

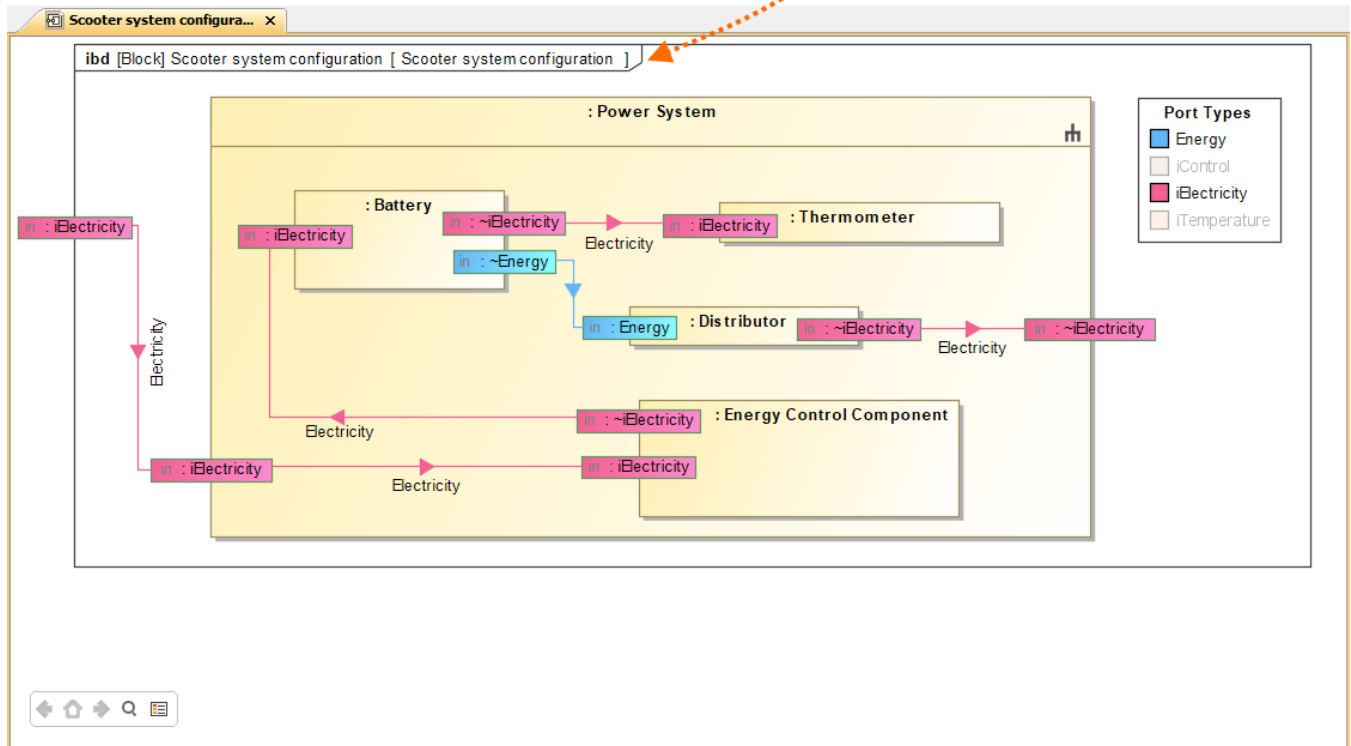
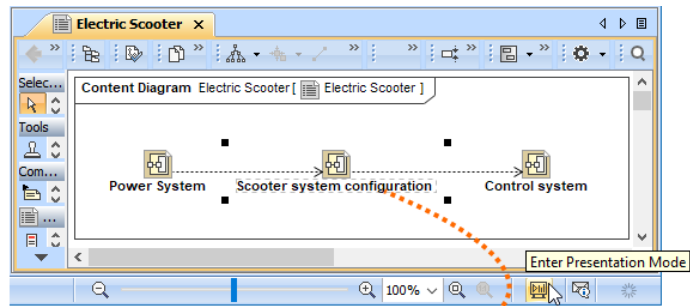


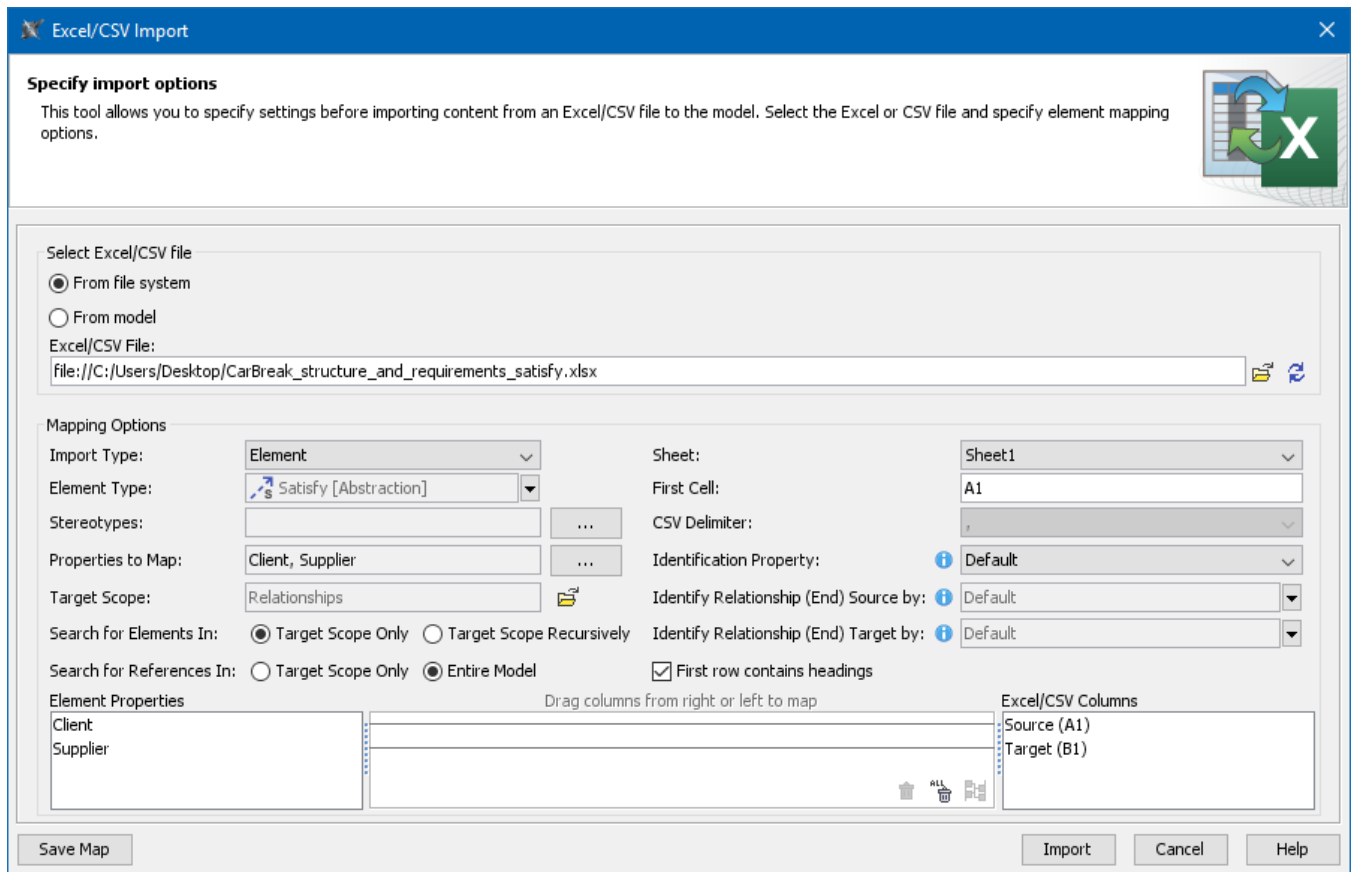
Diagram in the enabled Presentation Mode.

[Learn more about Presentation Mode >>](#)

[Back to top](#)

## Renewed Excel/CSV File Import

You can import data from an Excel/CSV file directly to the model without installing Excel and CSV Import Plugins (read more about [discontinued products](#)). From now on, the newly created Excel/CSV Import dialog brings an easy to use and clearly understandable graphical user interface. It allows you to import content with just a few clicks by selecting the Excel/CSV file and specifying element mapping options. Additionally, you can save your maps to reuse them, collect saved maps in groups, manage those groups, and use an entire group instead of a single map for data import.



**Excel/CSV Import**

**Specify import options**

This tool allows you to specify settings before importing content from an Excel/CSV file to the model. Select the Excel or CSV file and specify element mapping options.

Select Excel/CSV file

☒ From file system

☐ From model

Excel/CSV File:

file:///C:/Users/Desktop/CarBreak\_structure\_and\_requirements\_satisfy.xlsx

Mapping Options

Import Type: Element

Element Type: Satisfy [Abstraction]

Stereotypes:

Properties to Map: Client, Supplier

Target Scope: Relationships

Search for Elements In: ☒ Target Scope Only ☐ Target Scope Recursively

Search for References In: ☐ Target Scope Only ☒ Entire Model

Sheet: Sheet1

First Cell: A1

CSV Delimiter: ;

Identification Property: Default

Identify Relationship (End) Source by: Default

Identify Relationship (End) Target by: Default

☒ First row contains headings

Element Properties

Client

Supplier

Excel/CSV Columns

Source (A1)

Target (B1)

Save Map

Import

Cancel

Help

The Excel/CSV Import dialog with specified options for satisfy relationship import.

[Learn more about Excel/CSV file import >>](#)

## Extended Excel and CSV Sync

Three improvements expanded the data synchronization between Excel or CSV files and a model:

- Unique elements. Elements to be synchronized can now be identified not only by their name, but also by element property or tag value.
- Direct relationships. From now on, you can import direct relationships between the source and target elements as easily as other elements.
- Relationship ends. When importing relationships between different elements, you can select a specific property or tag to identify the source and target end of the relationship.

Excel/CSV Sync Options

Set Excel/CSV sync options

This tool allows you to specify settings before syncing content between an Excel/CSV file and a table. Select the Excel or CSV file to sync with the table. To define syncing or mapping options, click the Details button.

Select Excel/CSV file

From file system

From model

Excel/CSV File:

file:///C:/Users/Desktop/CarBreak\_structure\_and\_requirements\_satisfy.xlsx

Sync Options

If rows in the file are deleted: Mark as obsolete

Mapping Options

Sheet: Sheet1

First Cell: A1

CSV Delimiter: ;

Identification Property: Default

Identify Relationship (End) Source by: Default

Identify Relationship (End) Target by: Default

First row contains headings

Table Columns

Name

Client

Supplier

Drag columns from right or left to map

Excel/CSV Columns

Source (A1)

Target (B1)

Details

OK

Cancel

Help

New mapping options in the Excel/CSV Sync Options dialog: Identification Property, Identify Relationship (end) Source by, Identify Relationship (end) Target by.

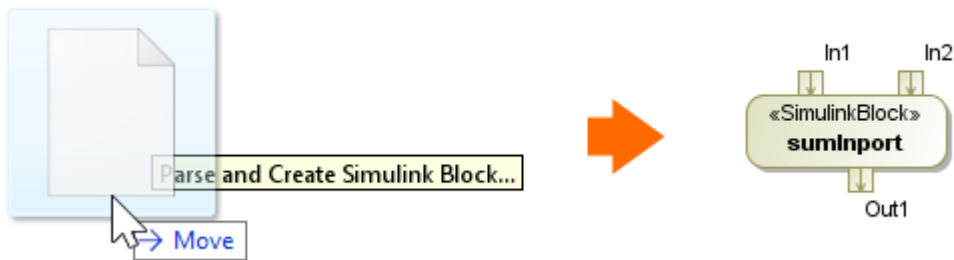
[Learn more about Excel/CSV Sync in tables >>](#)

## Composition and Aggregation Relationships in Dependency Matrix

You can now define relationships between the elements in your model more accurately! The latest release gives you the ability to create and display Composition and Aggregation relationships in a Dependency Matrix.



You can import the Simulink model by dragging and dropping the Simulink file (\*.slx) directly onto the Activity diagram. The Activity (stereotyped by «SimulinkBlock») which is assigned as behavior for the Call Behavior Action and its Input and/or Output Pins are created in the model.

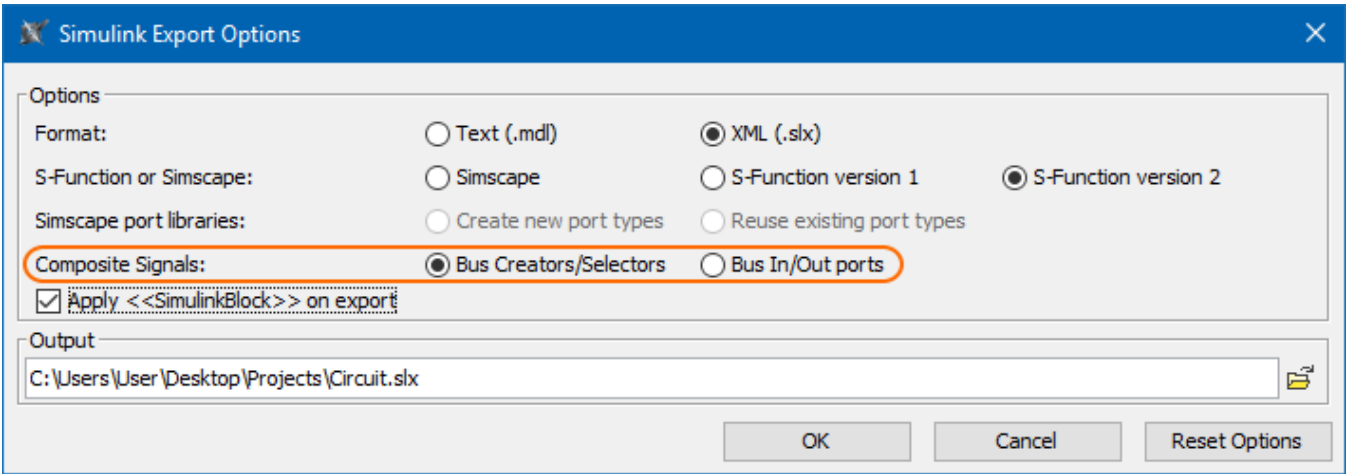


Simulink import to Activity diagram.

[Learn more about Simulink import >>](#)

### Simulink Composite Signals export

You can now select how to export Proxy Port or Interface Block with multiple Flow Properties (composite signals): as bus Creators/Selectors or as bus In /Out ports.



[Learn more about Simulink export >>](#)

[Back to top](#)

### IBD-based Selective Modelica Export

You can now use the Internal Block Diagram to select what to export to Modelica. Only parts, ports, and connectors appearing in this diagram are exported, rather than the entire model. See whole vs partial export comparison in the image below.

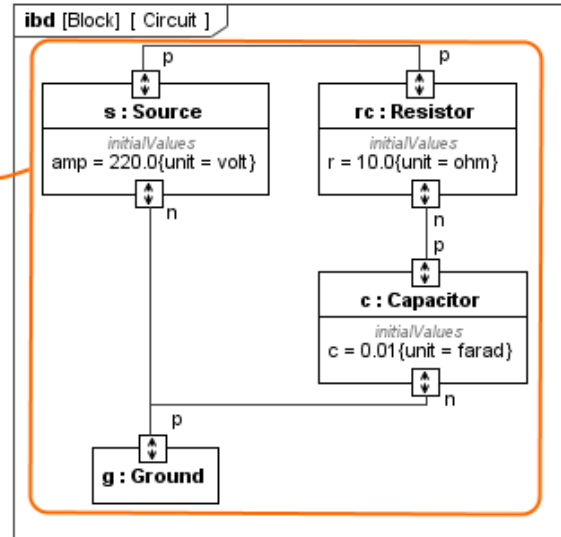


## IBD exported to Modelica

```

model Circuit
  Circuit_Circuit;
  model Circuit
    Source s(amp.start=220.0,amp.fixed=true);
    Capacitor c(c.start=0.01,c.fixed=true);
    Ground g;
    Resistor rc(r.start=10.0,r.fixed=true);
  equation
    connect(g.p,s.n);
    connect(s.p,rc.p);
    connect(c.p,rc.n);
    connect(c.n,s.n);
  end Circuit;
end Circuit;

```

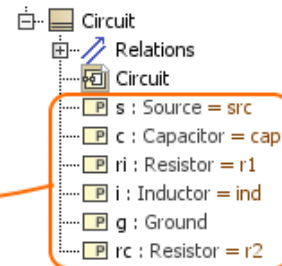


## Block exported to Modelica

```

model Circuit_full
  Circuit_Circuit_full;
  model Circuit
    Source s(amp.start=220.0,amp.fixed=true);
    Capacitor c(c.start=0.01,c.fixed=true);
    Resistor ri(r.start=20.0,r.fixed=true);
    Inductor i(l.start=0.1,l.fixed=true);
    Ground g;
    Resistor rc(r.start=10.0,r.fixed=true);
  equation
    connect(g.p,s.n);
    connect(s.p,rc.p);
    connect(rc.p,ri.p);
    connect(ri.n,i.p);
    connect(i.n,c.n);
    connect(c.p,rc.n);
    connect(c.n,s.n);
  end Circuit;
end Circuit_full;

```



The difference between whole (exporting Block) and partial (exporting IBD) export to the Modelica file.

[Learn more about Modelica export >>](#)

## SysML 1.6 Support

As of version 2021x the SysML Plugin supports the SysML 1.6 specification which brings the following improvements:

- One more way to model conjugated ports is to create the Conjugated Interface Block which has the same features as its original Interface Block except that its Directed Features and Flow Properties are reversed (conjugated). [Learn more about Conjugated Interface Block >>](#)
- The ability to change the Binding Connector notation keyword from "equal" to sign "=". [Learn how to create Binding Connector >>](#)
- The new stereotype «AddFlowPropertyValueOnNestedPortAction» is created which enables values added to a flow property to propagate out through a specified behavioral port of an object executing the action, rather than all behavior ports exposing the flow property. It also enables values added to a flow property to propagate into objects.
- The AdjunctProperty principal type is changed from Element to NamedElement.
- The «PropertySpecificType» stereotype is renamed to «pst».
- The [Value Type](#) compartment *attributes* is renamed to *properties*.

- The *initialValue* compartment is renamed to *initial values*.
- The *signal receptions* compartment is renamed to *receptions*.
- The *FlowDirection*, *FeatureDirection* and *ControlValueKind* enumerations are renamed to *FlowDirectionKind*, *FeatureDirectionKind* and *ControlValueKind* respectively.

[Learn more about SysML 1.6 support >>](#)

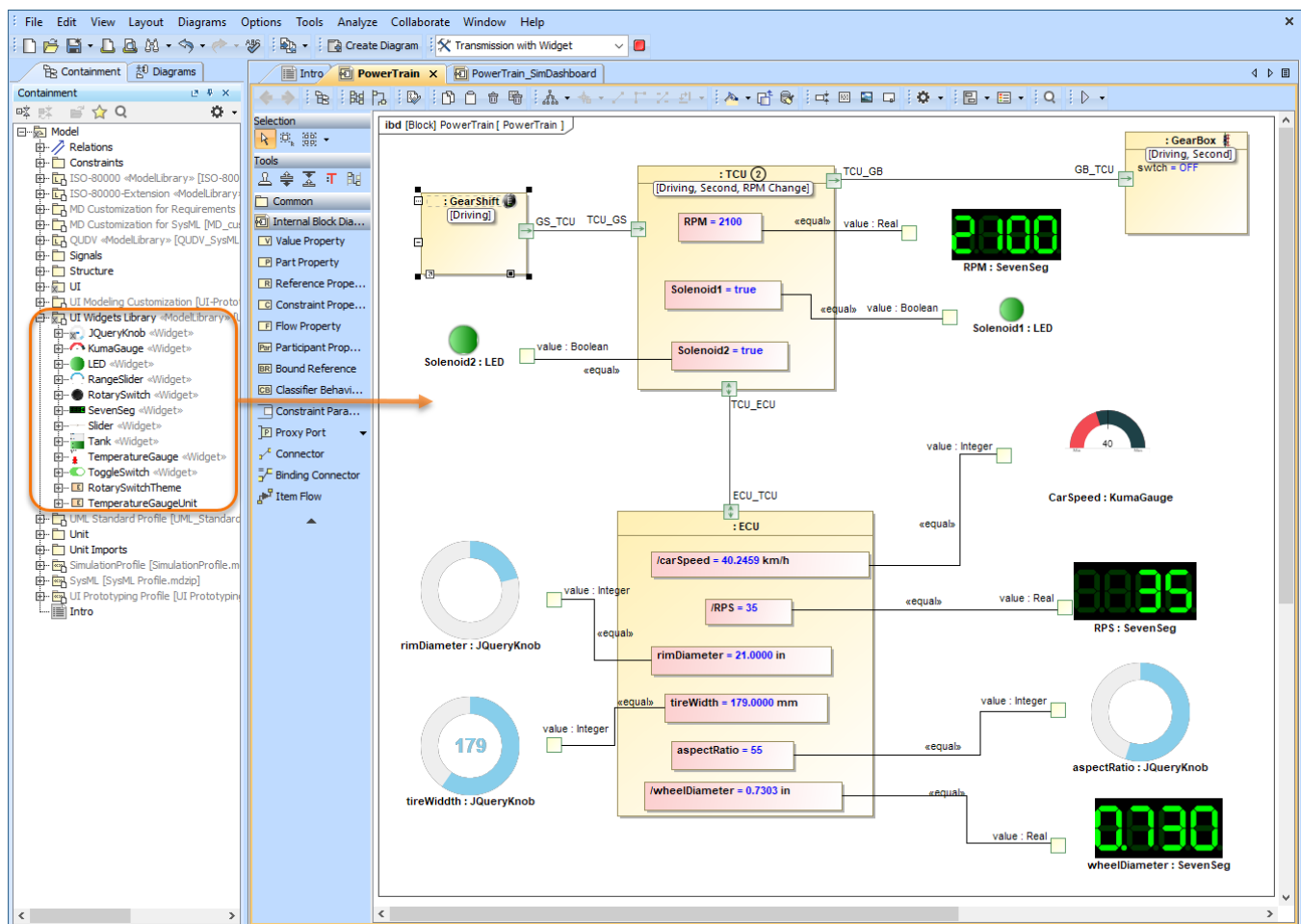
[Back to top](#)

## Simulation

### HTML Widgets in IBD Diagrams

Cameo Simulation Toolkit introduces a new powerful mechanism to integrate any third-party interactive HTML components (widgets) into SysML diagrams for simulation. A set of predefined widgets is available in *UI Widgets Library*. You can drag and drop widgets to IBD diagrams and connect them to appropriate value properties to provide inputs or read outputs. If you have basic HTML and JavaScript skills, you can manually create new custom widgets and integrate them into simulation.

Please note that the free Web Server for Cameo Simulation Toolkit plugin is required for this functionality.



The example of using widgets from *UI Widgets Library* in an Internal Block Definition Diagram.

[Learn more about integrating widgets for simulation >>](#)

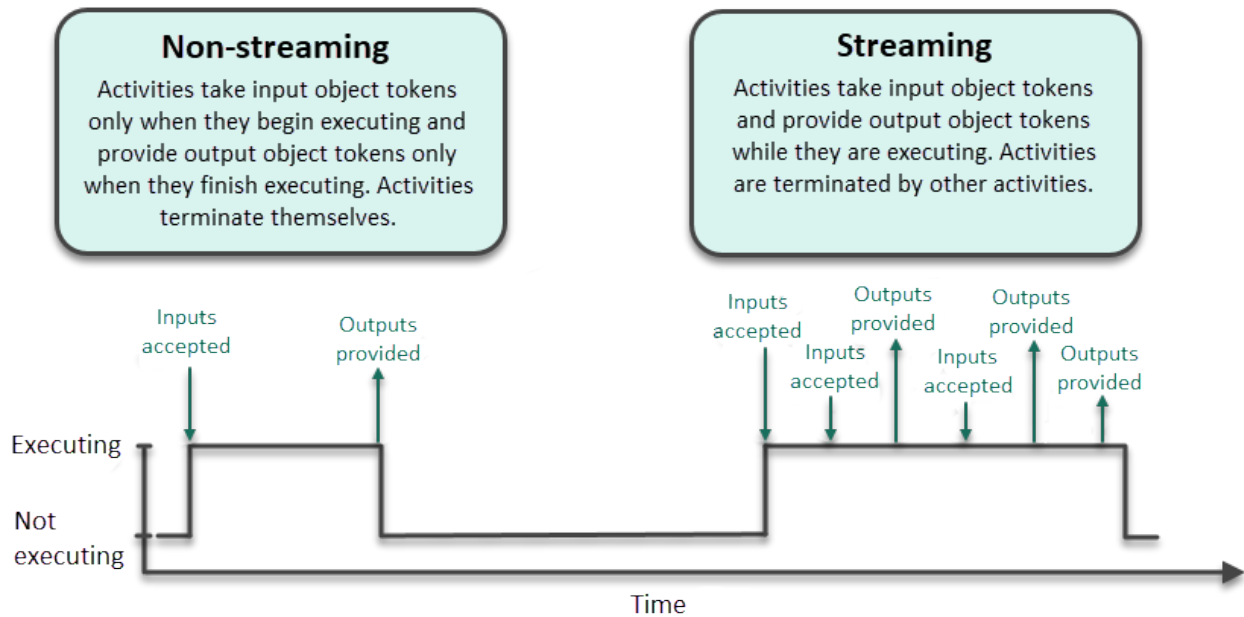
[Back to top](#)

### Streaming Activity Simulation

Cameo Simulation Toolkit 2021x supports the simulation of streaming activities when a system receives inputs and produces outputs even while behaviors continue to execute. As you can see in the example below, during simulation several actions can be executed simultaneously, and waiting tokens are displayed on action pins. Note that you can control the held token display in the Project Options dialog or Simulation Configuration properties.



An example of a streaming Activity.

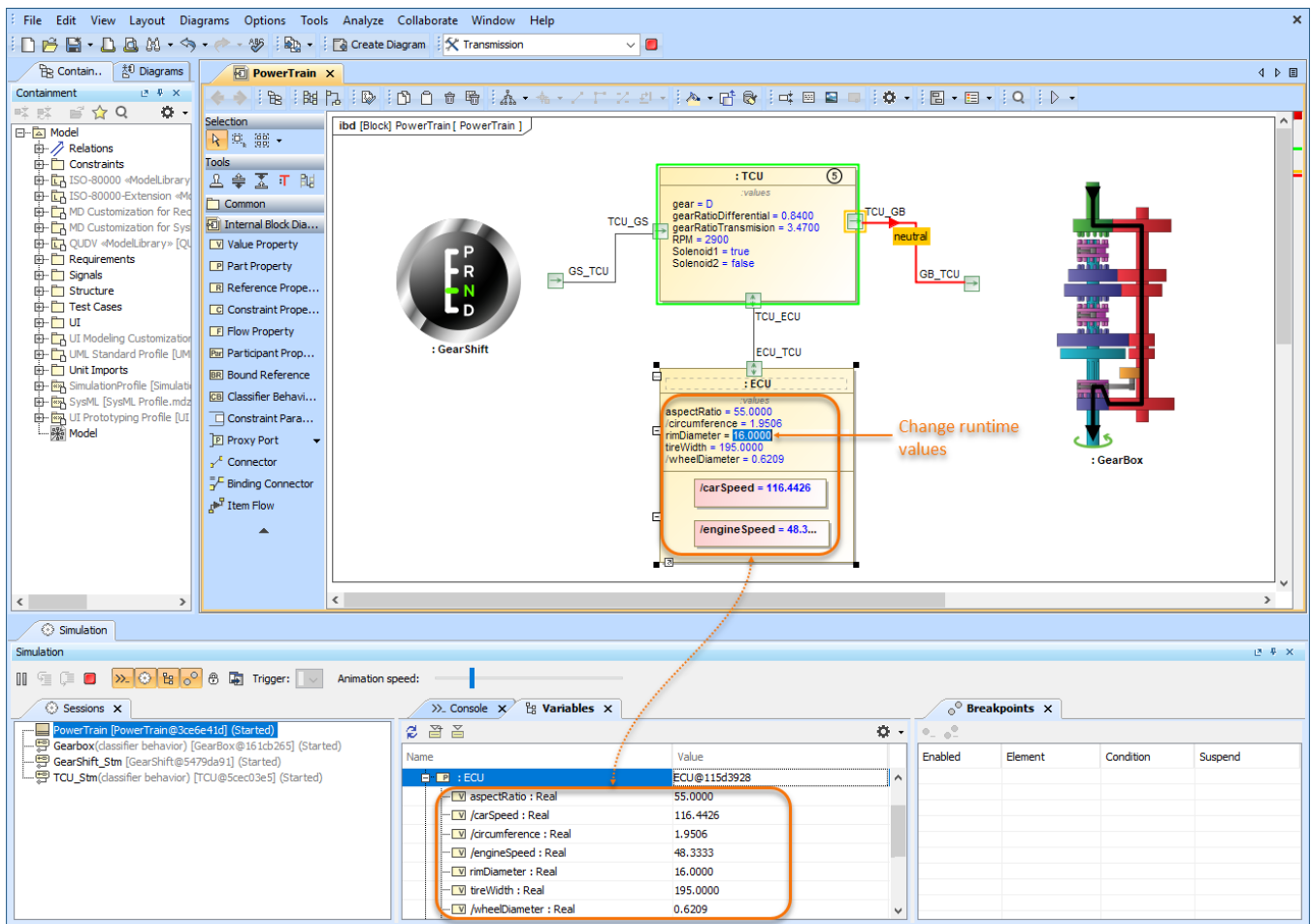


This diagram shows the differences between streaming and non-streaming behavior execution.

[Learn more about streaming Activity simulation >>](#)

## Displaying and Changing Runtime Values in Diagrams

With Cameo Simulation Toolkit 20.0 monitoring and manipulating simulation information has never been easier. Now you can display runtime values of Parts in all diagrams based on a Composite Structure Diagram as shown in the figure below. But that is not all, you can also modify runtime values directly in a diagram the same way you do it in the Simulation window.

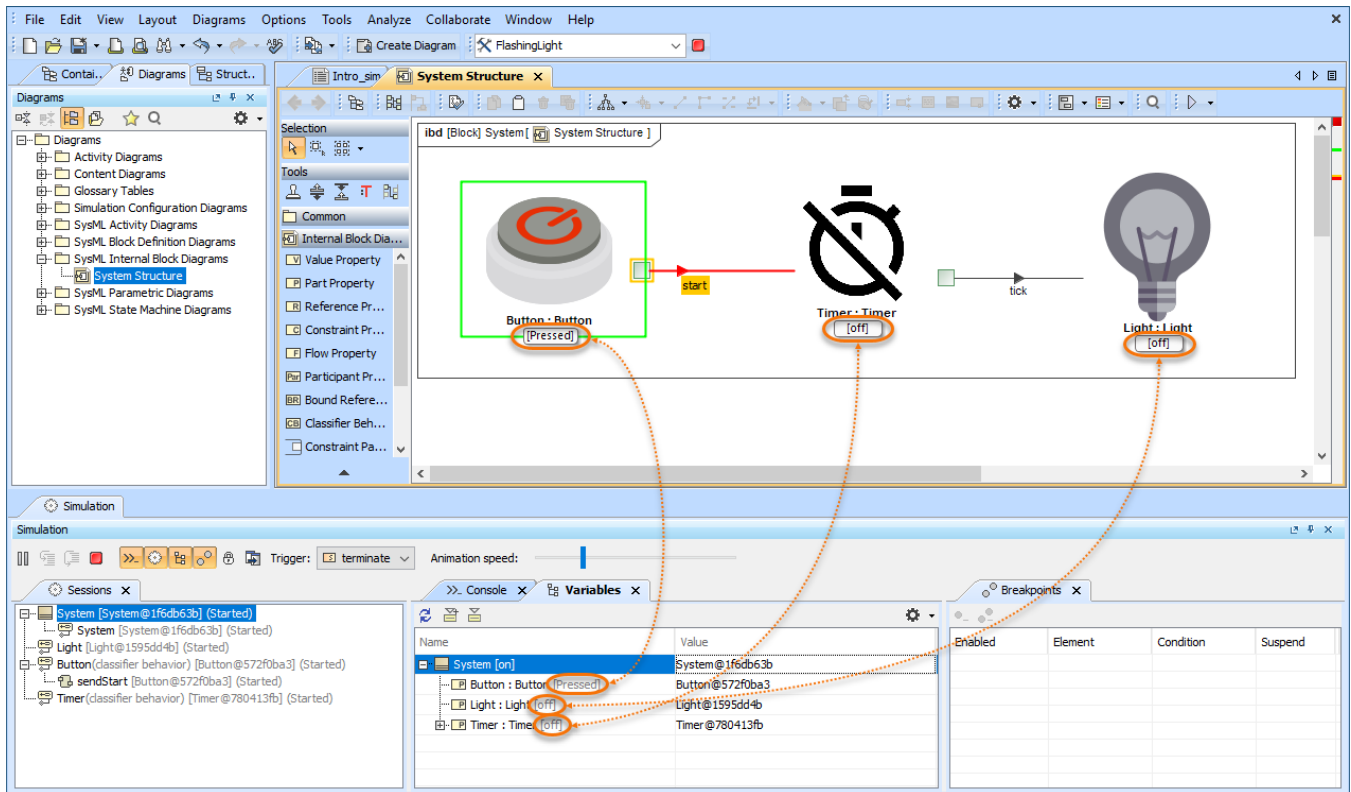


This sample model demonstrates how you can view and change runtime values of Parts directly in an Internal Block Definition Diagram.

[Back to top](#)

## Displaying Active State in Diagrams

Now diagrams based on a Composite Structure Diagram display the active States of Parts when simulating a model. Active states are shown on the bottom of Part shapes the same way they are displayed in the Variables pane of the Simulation window. This new feature improves the readability of simulation information because you no longer need the Simulation window to see how active States change when executing your model.

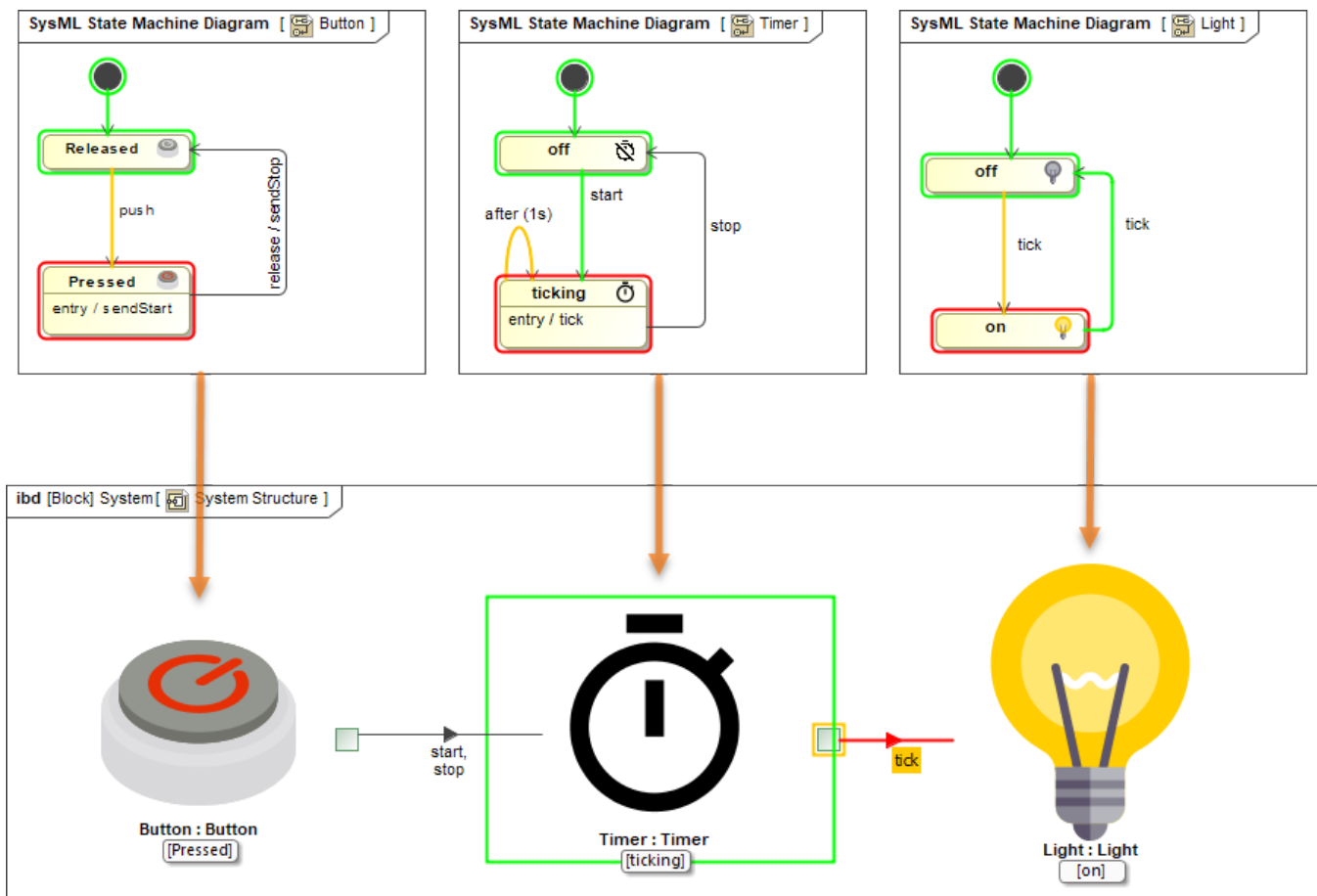


In this Internal Block Definition Diagram, you can see that active States are displayed both in the Simulation window and on the shapes of initialized Parts.

[Back to top](#)

## Displaying Active State Images

Make your model simulation look more illustrative and vivid by displaying active State images on Part shapes. You can do that by assigning an Image Switcher to the Simulation Configuration from which you execute your model or by applying an image to a State. When states change during simulation, state images change as well as displayed in the following figure.

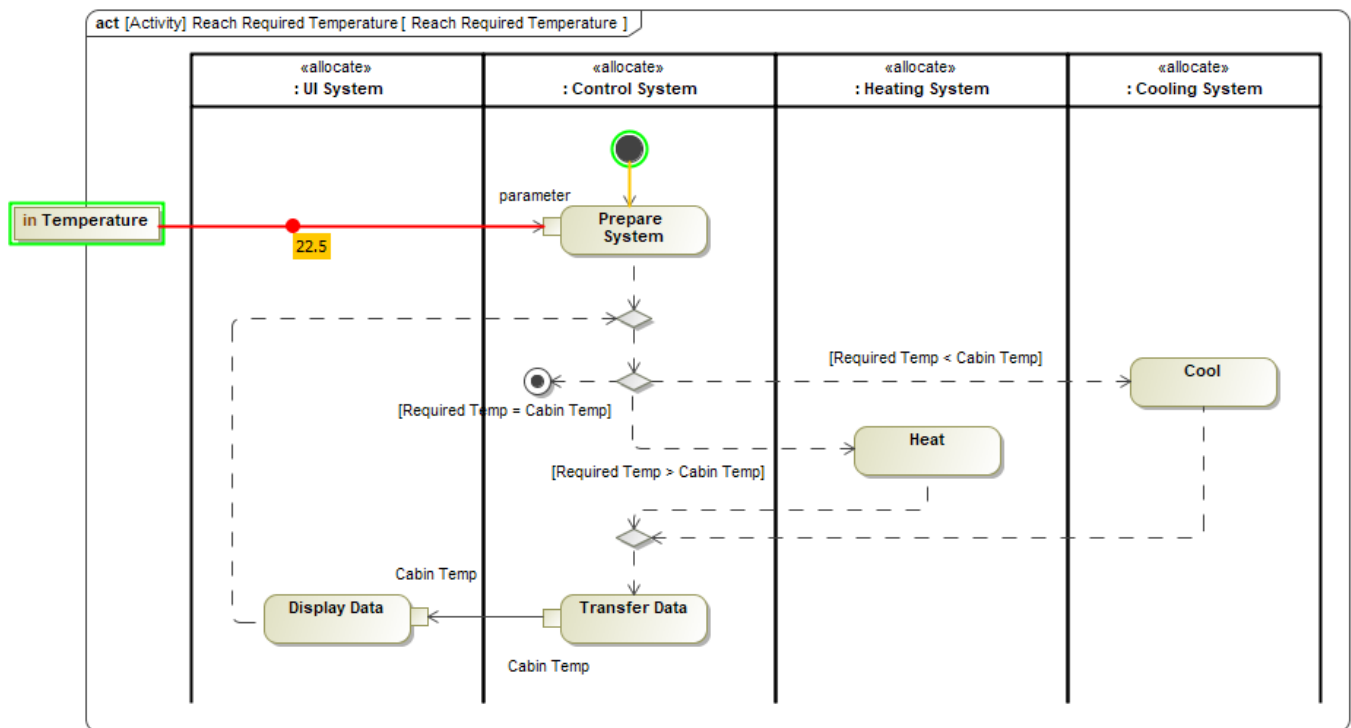


Here you can see how active State images are displayed when simulating a model.

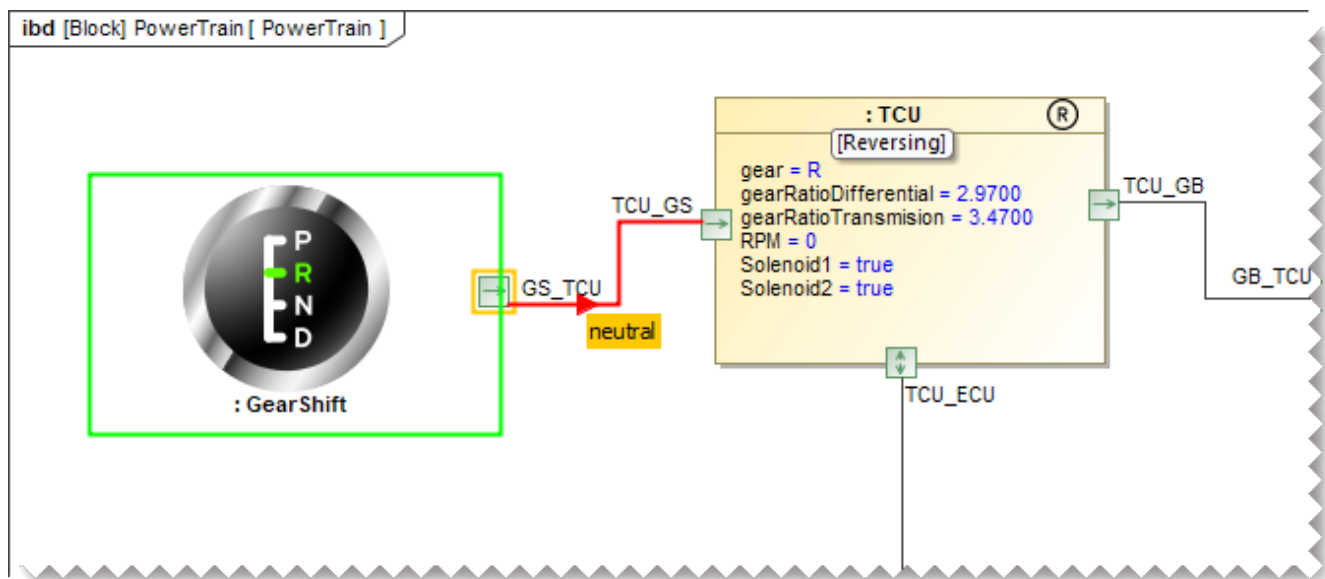
[Back to top](#)

## Displaying Flowing Information

Cameo Simulation Toolkit 20.0 allows you to see what information is flowing via paths that are animated during model execution. In Activity Diagrams, the flowing item is displayed as a bubble with a label showing the item name. In diagrams based on a Composite Structure Diagram, a moving triangle is shown on an animated path as illustrated below.



The temperature value flowing in an Activity Diagram.

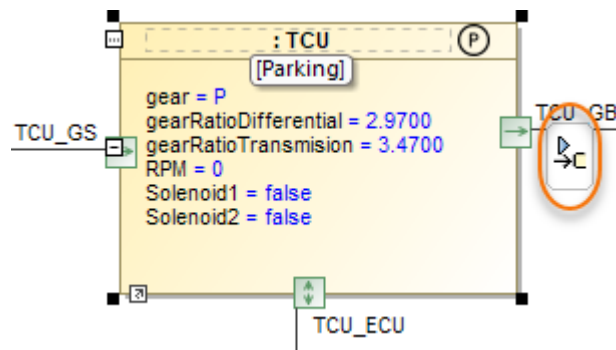


In this Internal Block Definition Diagram, you can see the *neutral* signal flowing from the *GearShift* to the *Transmission Control Unit (TCU)*.

[Back to top](#)

## Sending a Trigger in Diagrams

Now sending a trigger during model simulation is even more convenient because you can do it right from a diagram without using the Simulation window. You can send a trigger directly from a Part shape in all diagrams based on a Composite Structure Diagram. When it is possible to send a trigger, a special button is displayed on a Part shape after selecting it.



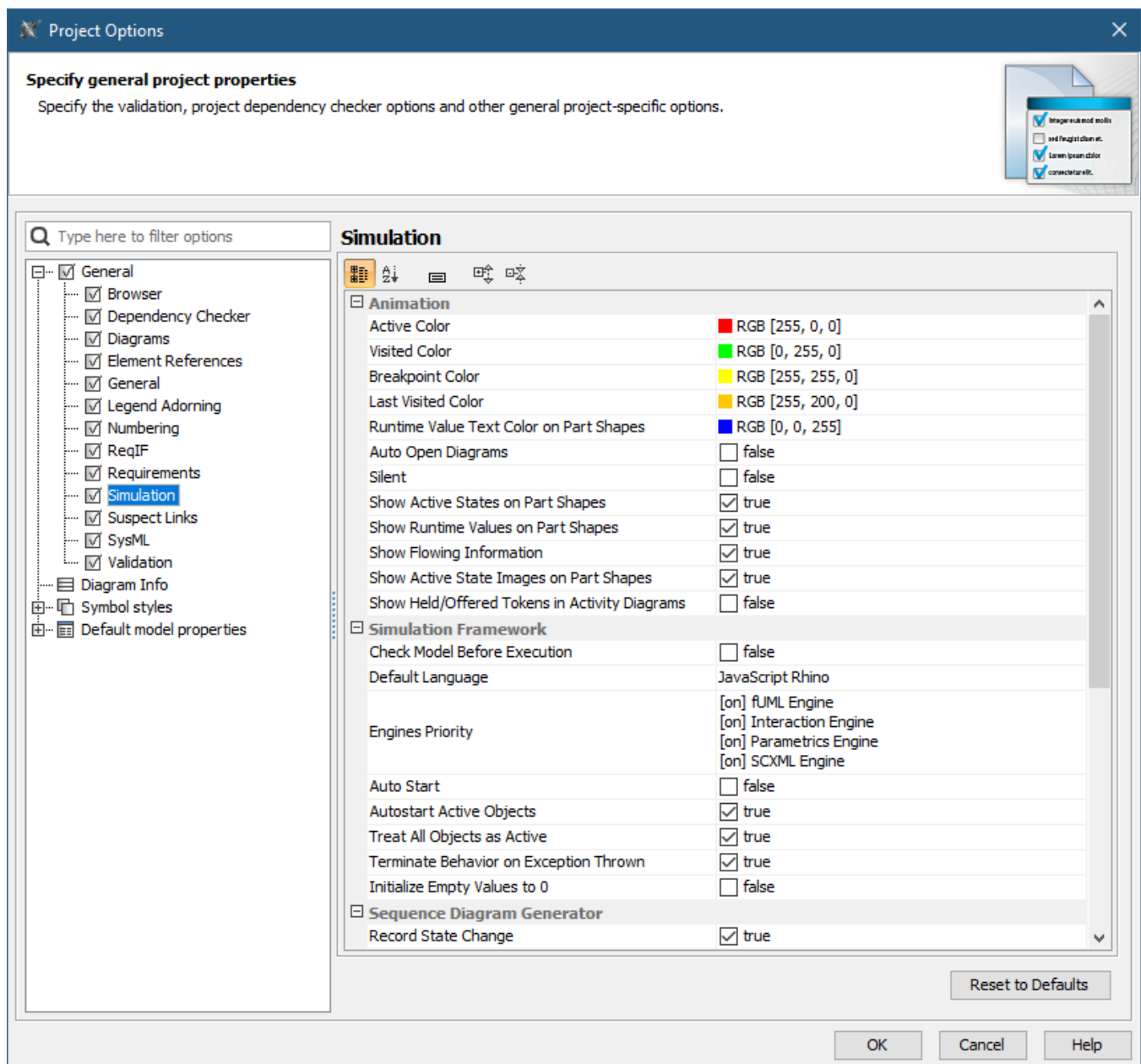
Simply click the highlighted button to send a trigger from a Part. If it is possible to send several triggers, the trigger list will be displayed for you to select from.

## Reorganized Simulation Options

All Simulation options have been moved from Environment Options to Project Options for better user convenience, as it allows customizing simulation to fit a particular project. In addition, all simulation settings will be exchanged among users who collaborate on a server.

Furthermore, most of the Simulation Configuration options are duplicated in Project Options now, so you can specify default values for execution without using Simulation Configuration.





As you can see in this figure, all simulation options are now accessible in the Project Options dialog.

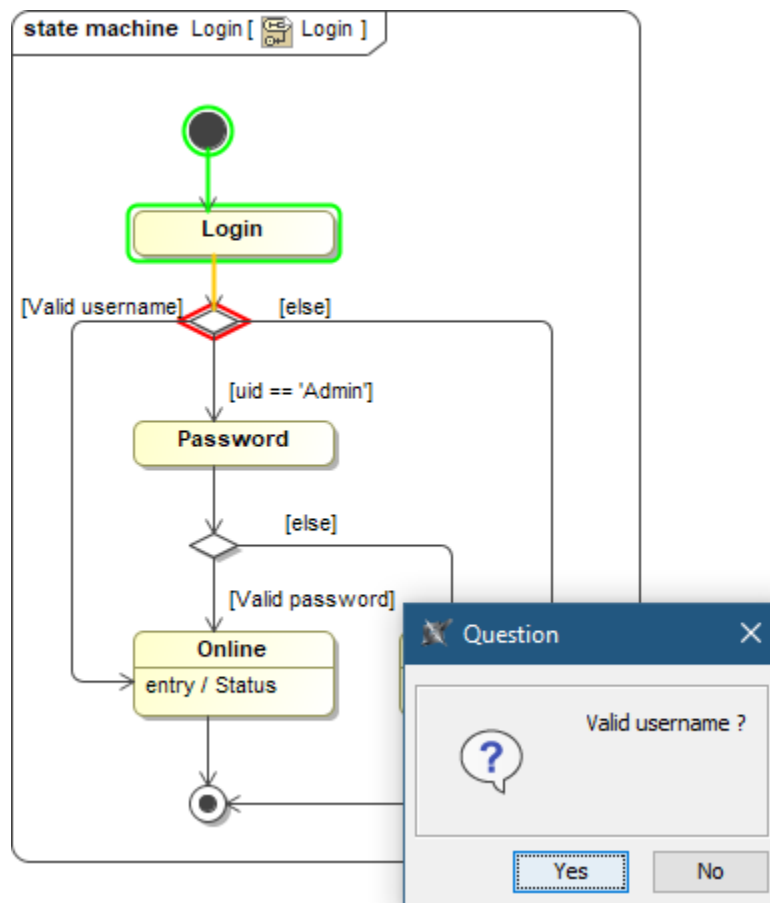
[Back to top](#)

## Animation Delay Logic

Animation delay affects only visible diagrams now. All closed diagrams and models run at full speed with no delays.

## Interactive Guard Evaluation for STM and Sequence Diagrams

The guard conditions on transitions expressed in natural language cannot be evaluated, so the question dialog will be shown for you to choose. This behavior is consistent with decision nodes in Activity Diagrams.

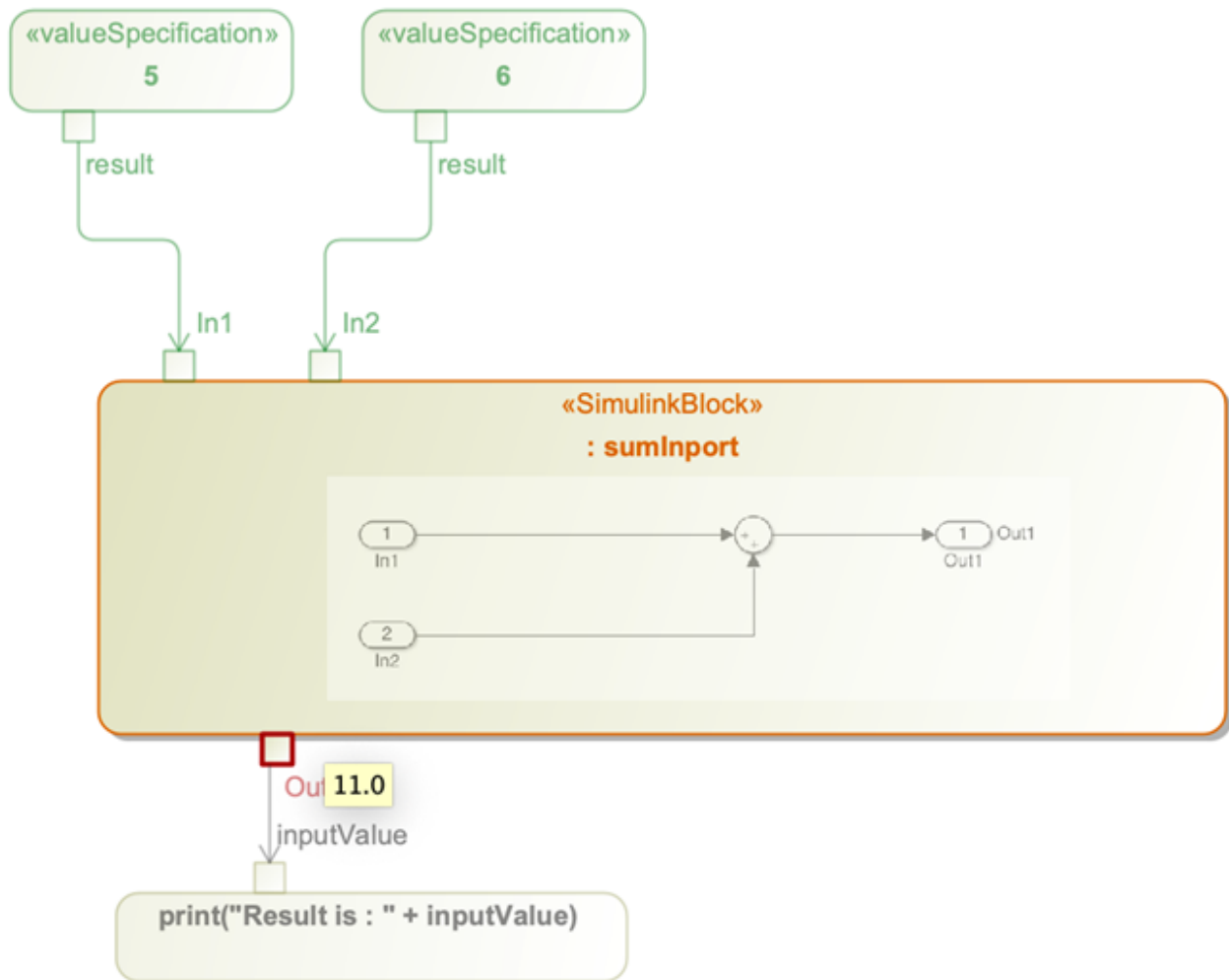


When simulating this State Machine Diagram, a user is asked to choose whether a user name is valid or not.

[Back to top](#)

## Simulink Co-Simulation in Activity Diagrams

A Simulink \*.slx file can be dropped into an Activity Diagram to create «SimulinkBlock» Activity and Call Behavior Action for it. If the file is attached to your project or stored in the project directory, Cameo Simulation Toolkit will be able to execute it with given input values and provide outputs to the action output pins.

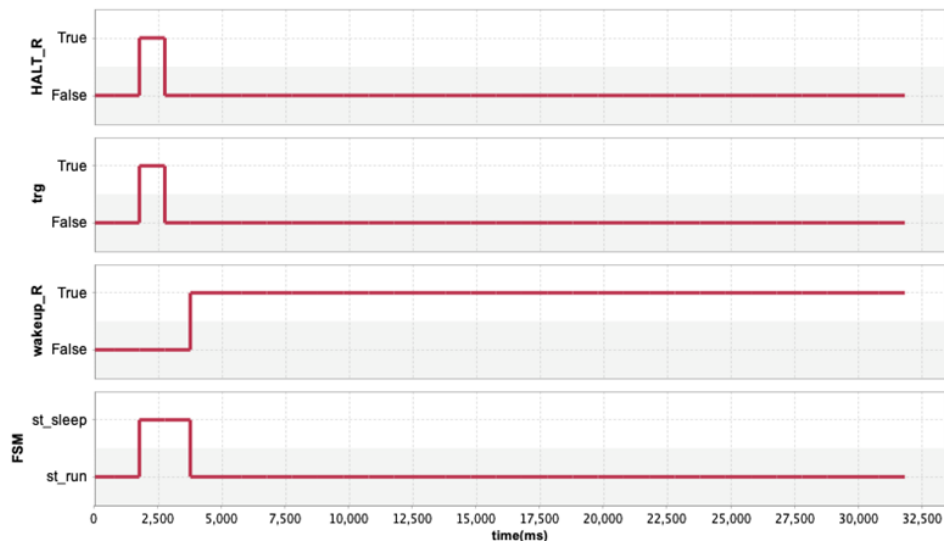


In this Activity Diagram, a «SimulinkBlock» action has been created from a Simulink \*.slx file.

[Back to top](#)

## Other

- A new parameter **-leaveprojectopen** has been introduced into the command-line interface. It allows leaving a project open for the next simulation if multiple property files are used in the simulation command.
- Boolean and Enumeration values are represented in Timeline plots now.



- A new **Record Time** option is added into CSV export configuration to be able to turn off the timestamp column when it is not needed, e.g., when recording Trade Study or Monte Carlo iterations.

clearance					
time(ms)	a.width	b.width	c.width	d.width	clearance
0.0000	1.9944	2.0354	30.0509	34.2966	0.2160
0.0000	1.9697	2.0203	29.8728	34.2523	0.3895
0.0000	2.0454	1.9674	29.4987	34.9981	1.4867
0.0000	2.0107	2.0471	30.4904	34.2126	-0.3355
0.0000	1.9736	1.9678	29.7498	34.8496	1.1584
0.0000	2.0137	2.0372	29.6934	34.7906	1.0464
0.0000	2.0392	2.0450	29.7384	34.5492	0.7265
0.0000	2.0149	1.9726	29.4790	34.9742	1.5076
0.0000	1.9561	1.9795	29.3263	34.1676	0.9058
0.0000	1.9951	2.0222	29.4926	34.1864	0.6764
0.0000	2.0260	1.9855	30.6823	34.8620	0.1683
0.0000	1.9826	1.9763	29.2787	34.8588	1.6213
0.0000	2.0343	2.0279	29.2417	34.3758	1.0719
0.0000	2.0475	1.9934	29.3511	34.9575	1.5654
0.0000	2.0238	2.0096	29.4442	34.4924	1.0148

Record Time option enabled

clearance				
clearance	a.width	b.width	c.width	d.width
1.8224	1.9578	1.9699	30.0587	35.8088
-0.9301	1.9746	1.9663	30.4338	33.4446
1.5177	1.9521	1.9780	29.4977	34.9455
-0.5669	1.9511	1.9506	30.6510	33.9859
1.6408	1.9709	1.9568	29.5152	35.0835
0.2654	1.9706	1.9520	29.8979	34.0859
0.5576	1.9730	1.9538	29.7666	34.2509
0.2310	1.9588	1.9729	30.3763	34.5390
0.0714	1.9665	1.9619	30.5595	34.5594
0.7627	1.9572	1.9760	30.5333	35.2293
-0.5937	1.9775	1.9519	30.1803	33.5159
0.6929	1.9600	1.9781	29.8563	34.4873
0.3617	1.9785	1.9701	30.7730	35.0834
0.2559	1.9568	1.9542	30.4345	34.6014

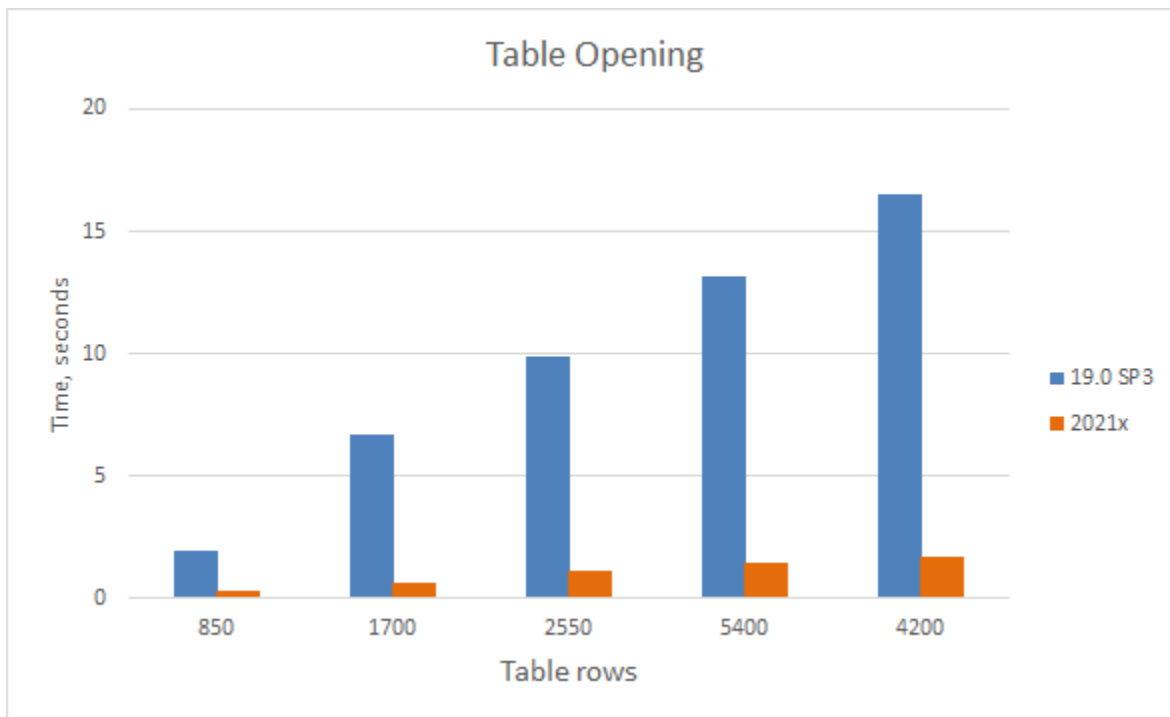
Record Time option disabled

[Back to top](#)

## Client-side Performance Improvements

### Partial Data Loading in Tables

Experience enhanced table loading and scrolling performance! Thanks to the newly-introduced Load Partially mode, data is now loaded in only visible rows. There is no longer a need to wait until data is calculated in the entire table. Additionally, fast scrolling has improved; it is now considerably smoother.

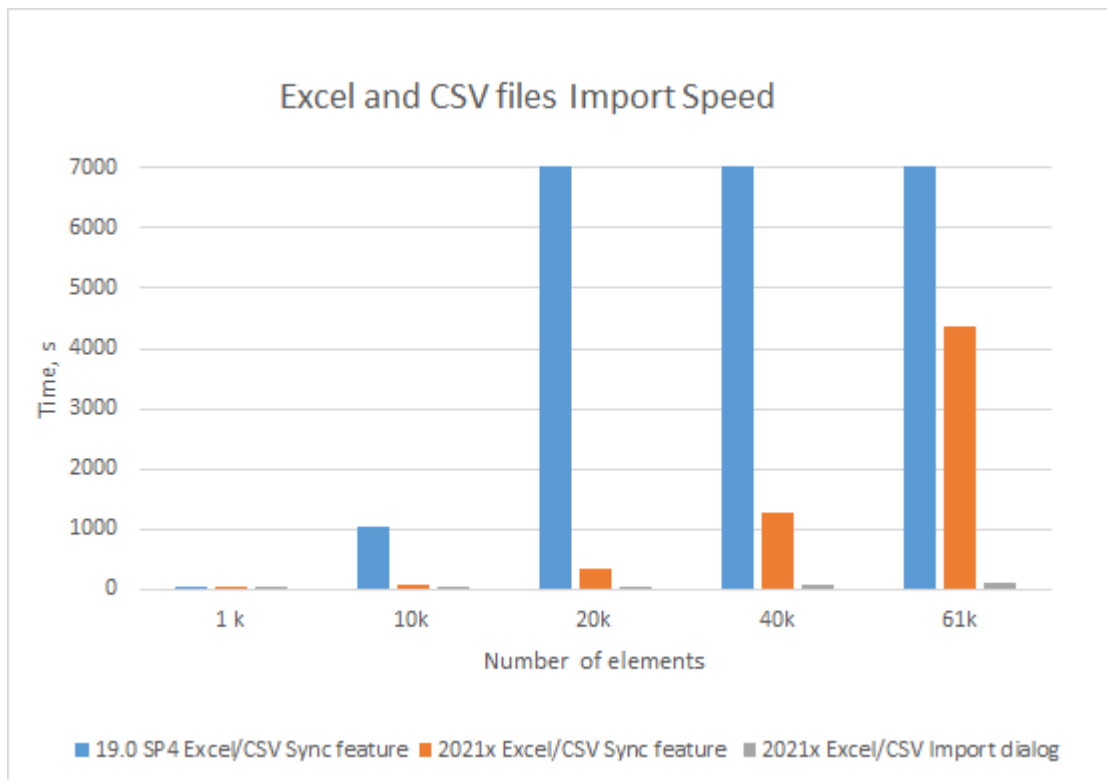


A chart comparing the opening time of Requirement Table having 7 standard columns with a different number of requirements.

[Learn more about partial loading in tables >>](#)

## Increased Excel and CSV files Import Speed

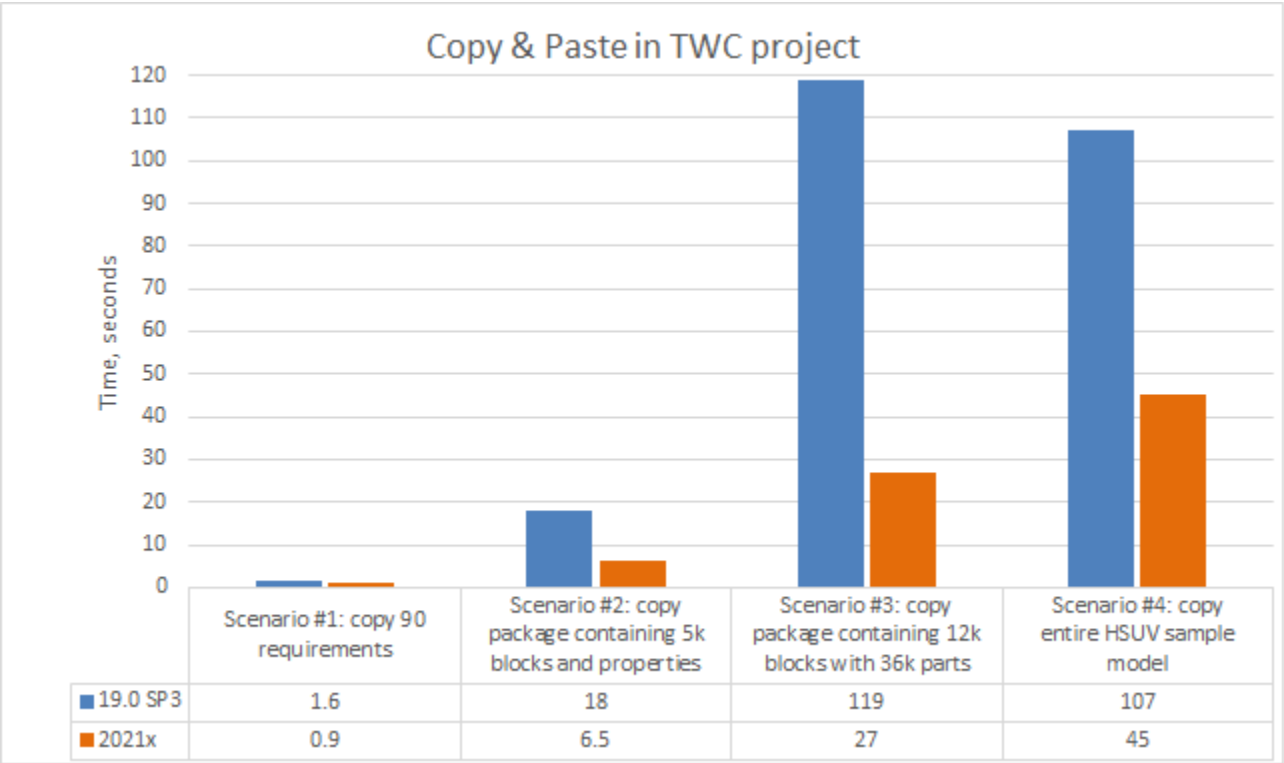
The import performance of data from an Excel or CSV file into the modeling tool adds a great experience while managing a large scope of data. The data import time using the table sync feature is significantly faster compared with the previous version (19.0 SP4). Also, the data import using the new Excel /CSV Import dialog is even better in comparison to Excel/CSV Sync feature. The import of 61k elements takes only 2 minutes (see the chart below).



A chart comparing data import from Excel and CSV files using the Excel/CSV Sync and Excel/CSV Import dialogs.

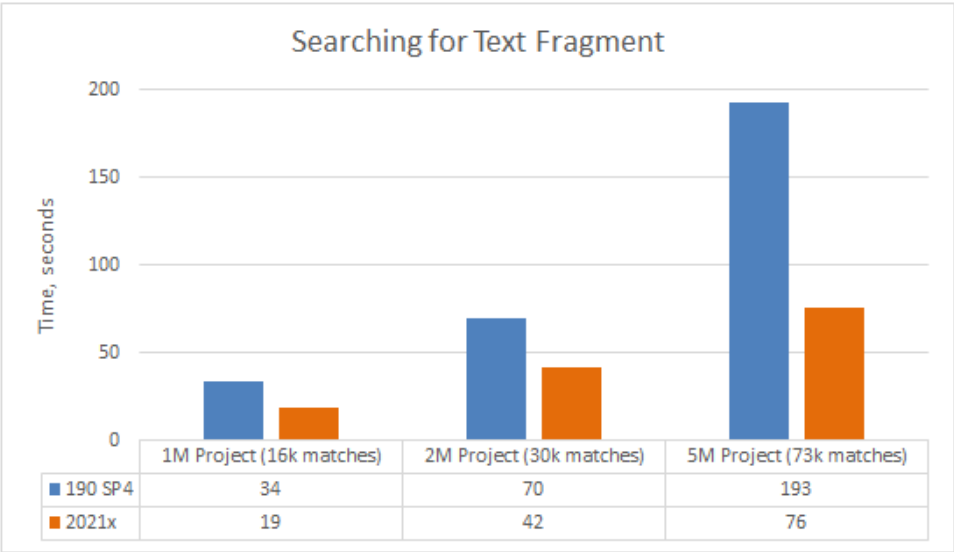
Common Operations

- **Copy/Paste.** Now you can copy and paste data 2-4 times faster depending on the specific scenario.



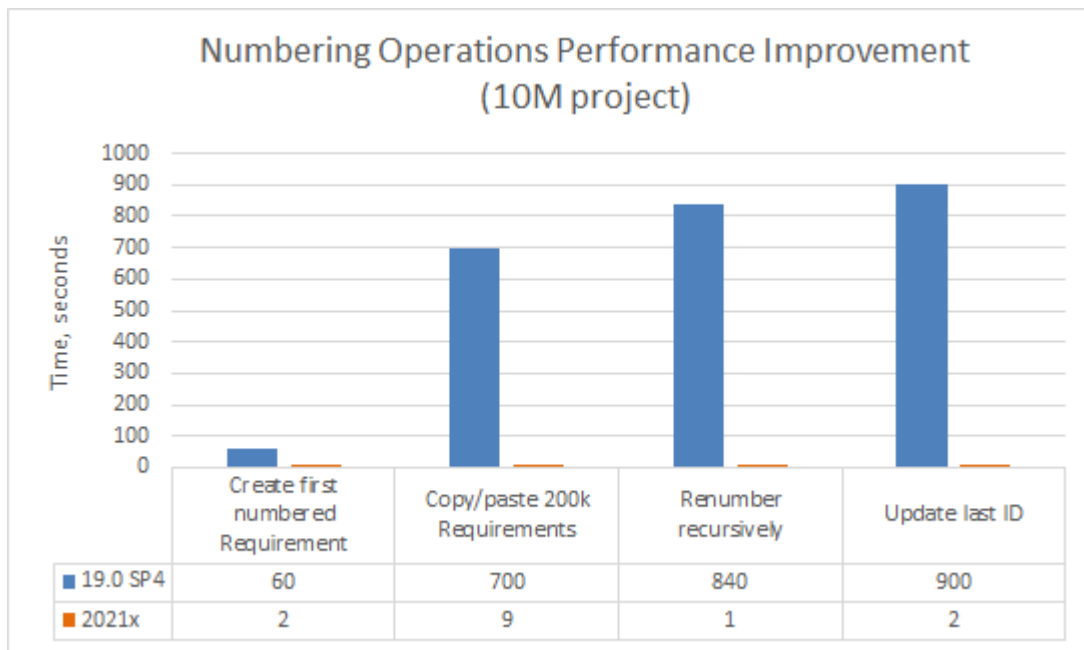
A chart comparing the copy&paste operation time in various scenarios.

- **Find.** The search speed in all texts has increased by 70-150% compared to 19.0 SP4.



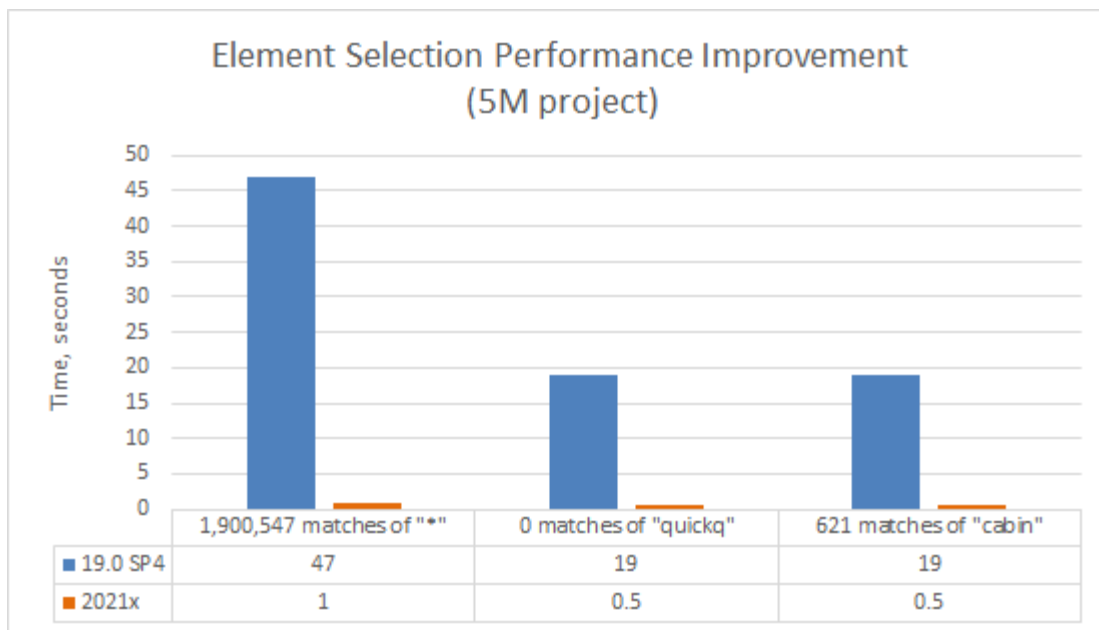
A chart comparing the Find operation speed in 19.0 SP4 and 2021x projects containing 1M, 2M, and 5M elements (including used projects).

- **Numbering.** Creating the first numbered element, copying/pasting numbered elements, renumbering elements recursively, and updating the last element ID is now 30-840 times faster.



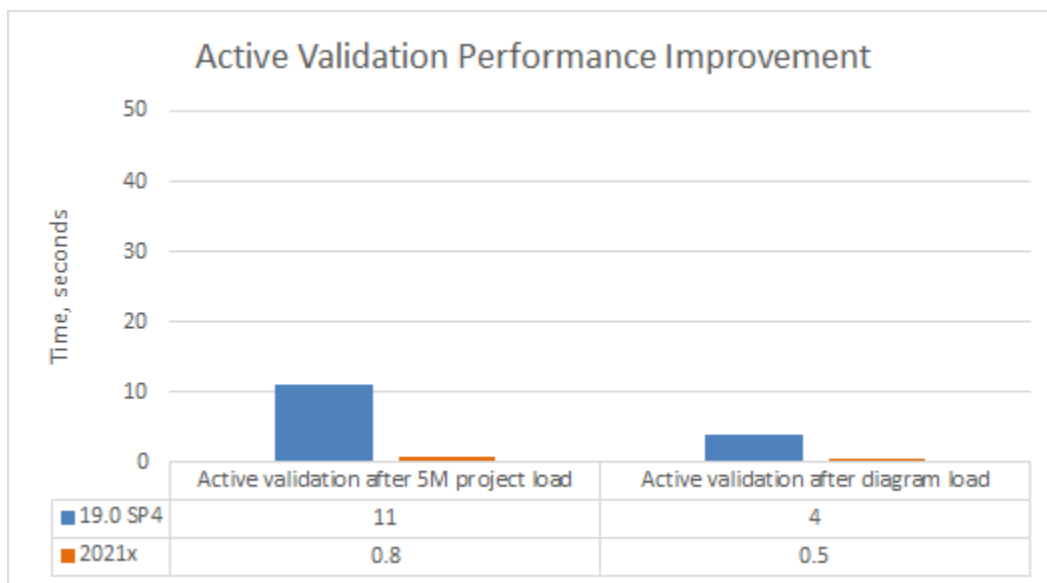
A chart comparing the Numbering operations speed in 19.0 SP4 and 2021x projects containing 10M elements (including used projects).

- **Element Selection.** Now you can search and select the needed elements (e.g., in the **Select Element** and **Quick Find** dialogs as well as drop-down lists) approximately 40-50 times faster.



A chart comparing the element selection speed in 19.0 SP4 and 2021x projects containing 5M elements (including used projects).

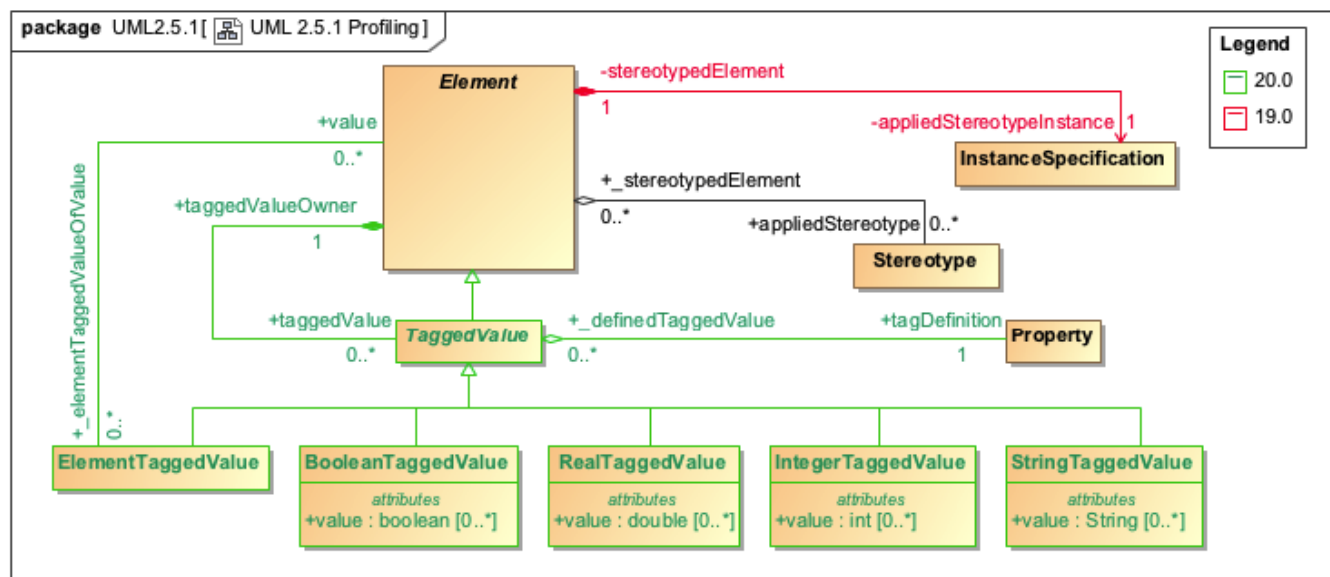
- **Validation.** The active validation of the model now takes less than a second (0.8s after 5M project load and 0.5s after diagram load).



A chart comparing the active validation speed after the project and diagram load in 19.0 SP4 and 2021x projects containing 5M elements (including used projects).

## Profiling Changes in the UML 2.5.1 Metamodel

Significant changes have been implemented in the UML metamodel for improved performance. The InstanceSpecifications, Slots, and ValueSpecifications are no longer used to store profiling data. Instead, new model element types and properties are introduced, while some have been removed (see the diagram below).



Profiling changes in the UML metamodel.

As shown in the figure above, Element references the TaggedValue that is used to specify the Boolean, Integer, Real, String, or Element values of the applied stereotype properties. This approach uses fewer model elements to store profiling data, which leads to a decrease in the total number of elements in SysML and UAF projects by 40-80%.

**Note.** Expressions based on the previously implemented profiling data storing metamodel no longer work, meaning that they have to be updated manually.

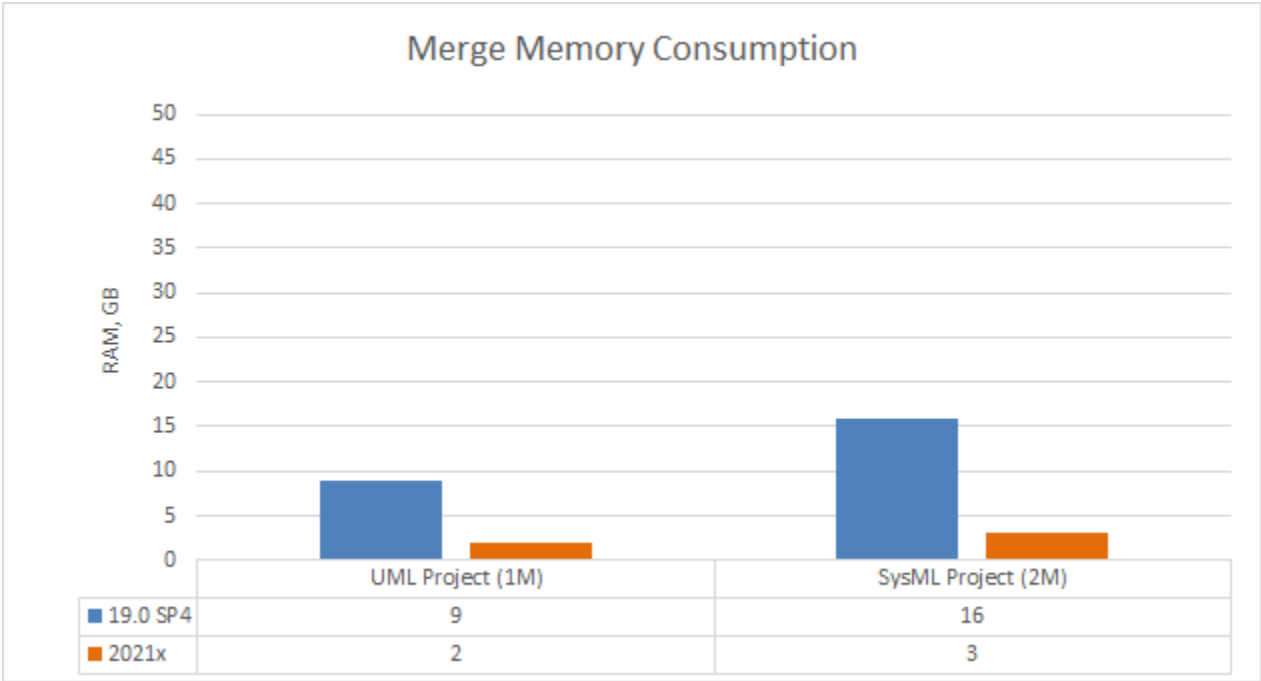
[Back to top](#)

TWC-related Performance Improvements

## Project Merge

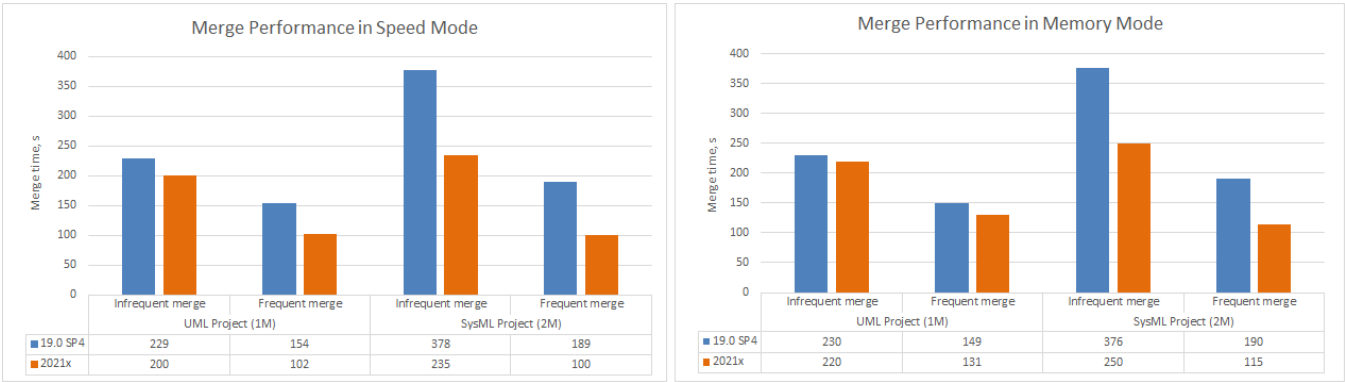


Project Merge has undergone considerable performance improvements. The modeling tool version 2021x requires approximately 4-5 times less memory to successfully merge two server project branches, compared to 19.0 SP4.



A chart comparing merge memory consumption in different modeling tool versions.

Furthermore, the merge operation speed has increased by 20-70% in 2021x compared to 19.0 SP4. Both frequent (between close project versions) and infrequent (between distant project versions) merges can now be performed much faster!

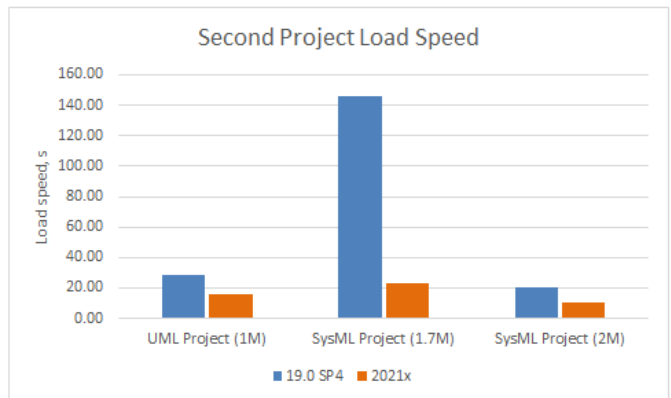
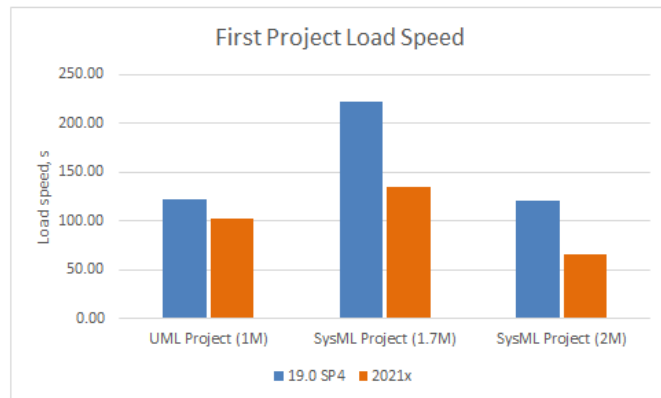
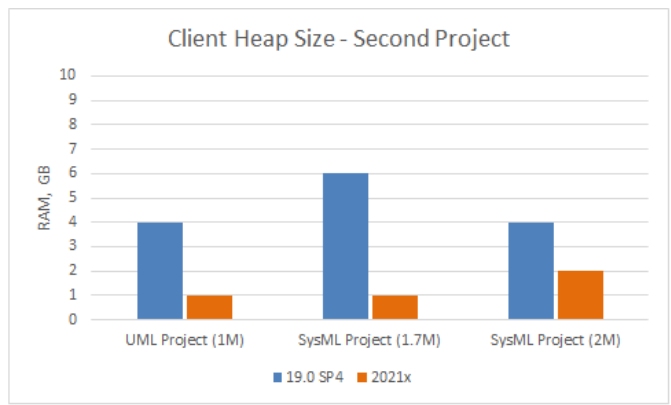
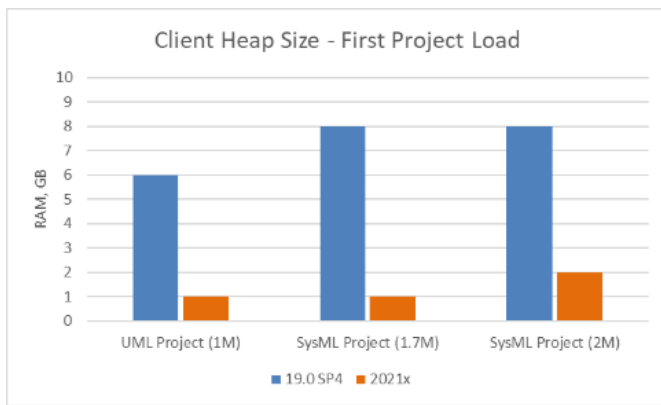


Charts comparing merge performance in Speed and Memory modes.

TWC Project Load

Project load memory and speed improvements have been implemented for Teamwork Cloud. The modeling tool now requires only 2GB of heap to load a 2M SysML project (first and second time) when working with TWC projects compared to 8GB in 19.0 SP4. Additionally, as a result of the UML metamodel changes, SysML projects are now opened 2-3 times faster.

**Note.** Received results cover the project load only, excluding validation, diagramming, and further modeling tool feature usage.

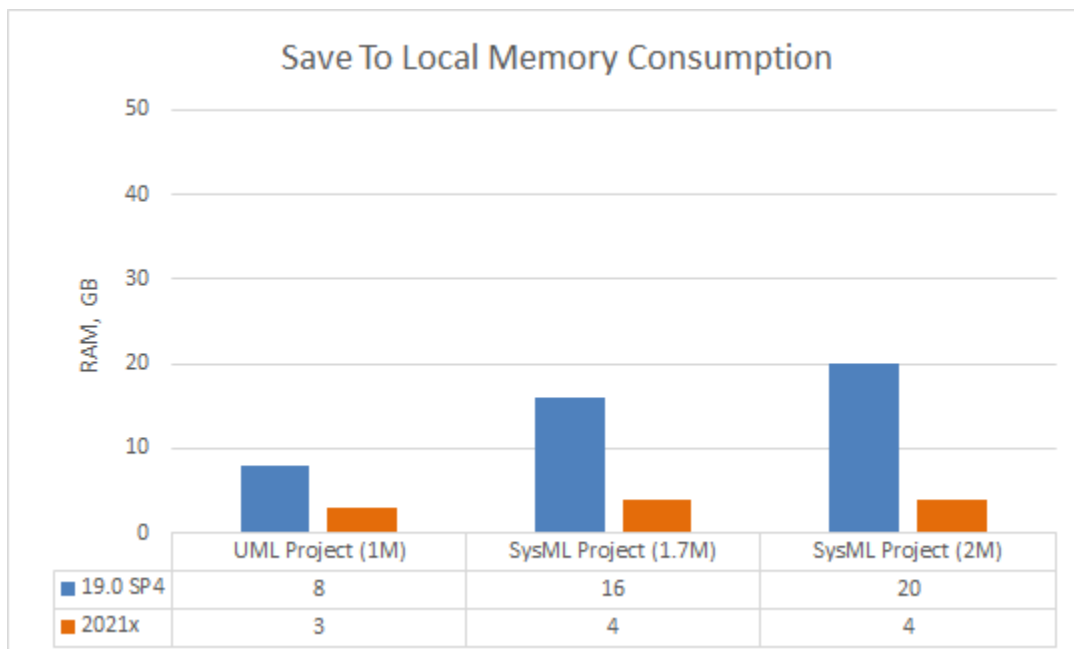


Charts comparing project load memory and speed improvements between different modeling tool versions.

- Three projects (sizes ranging from 1M to 2M) in 19.0 SP4 and the same projects in 2021x (sizes ranging from 750k to 1M) were used to run the tests.
- Migration time is excluded because projects that had already been migrated were used for testing.

## TWC Save to Local

In 2021x, great attention is paid to the memory consumption improvements. Saving a Teamwork Cloud project locally now requires less memory. For example, a 2M SysML project now consumes only 4GB of RAM, compared to 20GB in 19.0 SP4.



A chart comparing memory consumption when saving a TWC project as a local one between different modeling tool versions.

## System Requirements

RAM and disk space requirements have been updated taking into consideration different sizes of large models. [Learn more about recommended system requirements >>](#)

Project Elements Count (including used projects)		Allocated Memory <sup>2</sup>	Disk Space
Earlier versions	2021x and later <sup>1</sup>		
1.5 million	1 million	6GB	6GB
2.5 million	2 million	7GB	10GB
5 million	3.5 million	11GB	30GB

<sup>1</sup> the project elements count is different due to the profiling data storing metamodel optimized in 2021x.

<sup>2</sup> these memory requirements are indicative and may vary by project specifics.

[Back to Top](#)

## Discontinued Products

- The development of the following plugins is discontinued:
  - Document Modeling Plugin (Model-based reports). For more effective model publishing and reviewing on the web, use [Cameo Collaborator](#).
    - To create Views and Viewpoints diagrams using the modeling tool with no plugins installed, use the Cameo Collaborator Publisher plugin or the SysML plugin instead.
    - The DockBook Library Profile is no longer available.
  - Methodology Wizard Plugin.
  - QVT Plugin.
  - Excel Import Plugin. We highly recommend using [Excel/CSV Sync](#) or [Excel/CSV Import](#) features instead.
  - CSV Import Plugin. We highly recommend using [Excel/CSV Sync](#) or [Excel/CSV Import](#) features instead.
  - LieberLieber Embedded Engineer plugin.
  - Project Element Counter plugin.
  - MBSE plugin.
- Web portal reports are no longer available. For more effective model publishing and reviewing on the web, use [Cameo Collaborator](#). You can also use Web Publisher (Simple HTML) or Web Publisher 2.0 ReportWizard templates to generate HTML reports.
- WSDL Code Engineering and WSDL diagrams are no longer available.
- C# Code Engineering and C# Professional Edition are no longer available.
- CIL and CIL Disassembler Code Engineering are no longer available.
- The News Reader (RSS) is no longer available. The notification at the right bottom corner of the modeling tool will inform you about the new version release instead.
- The *no\_install\_mac.zip* and *32-bit* installation files are no longer offered for download.
- The Project Usage Map Profile is no longer available.
- The JavaScript Nashorn is deprecated with the intention of removing it. We highly recommend using JavaScript Rhino instead.
- The following 3rd party plugins are discontinued:
  - Cameo Workbench
  - Cameo Inter-Op
  - ParaMagic Lite
- The following no cost plugins are no longer available in modeling tools:
  - FAS. From now on, download it here: <https://sourceforge.net/projects/fas4md>.
  - SYSMOD. From now on, download it here: <https://sourceforge.net/projects/sysmod4md/>.

## From Teamwork Server to Teamwork Cloud

Teamwork Server is no longer supported in the latest release. Teamwork Cloud should be used as a product for collaborative modeling and model version control. Customers still using Teamwork Server must migrate their server projects to TWC 19.0 series first and then upgrade to TWC 2021x.

[Learn how to migrate from Teamwork Server to Teamwork Cloud >>](#)

## From Cameo Collaborator for Alfresco to Cameo Collaborator for Teamwork Cloud

From version 2021x, Cameo Collaborator for Alfresco is no longer supported. We recommend using Cameo Collaborator for Teamwork Cloud instead.

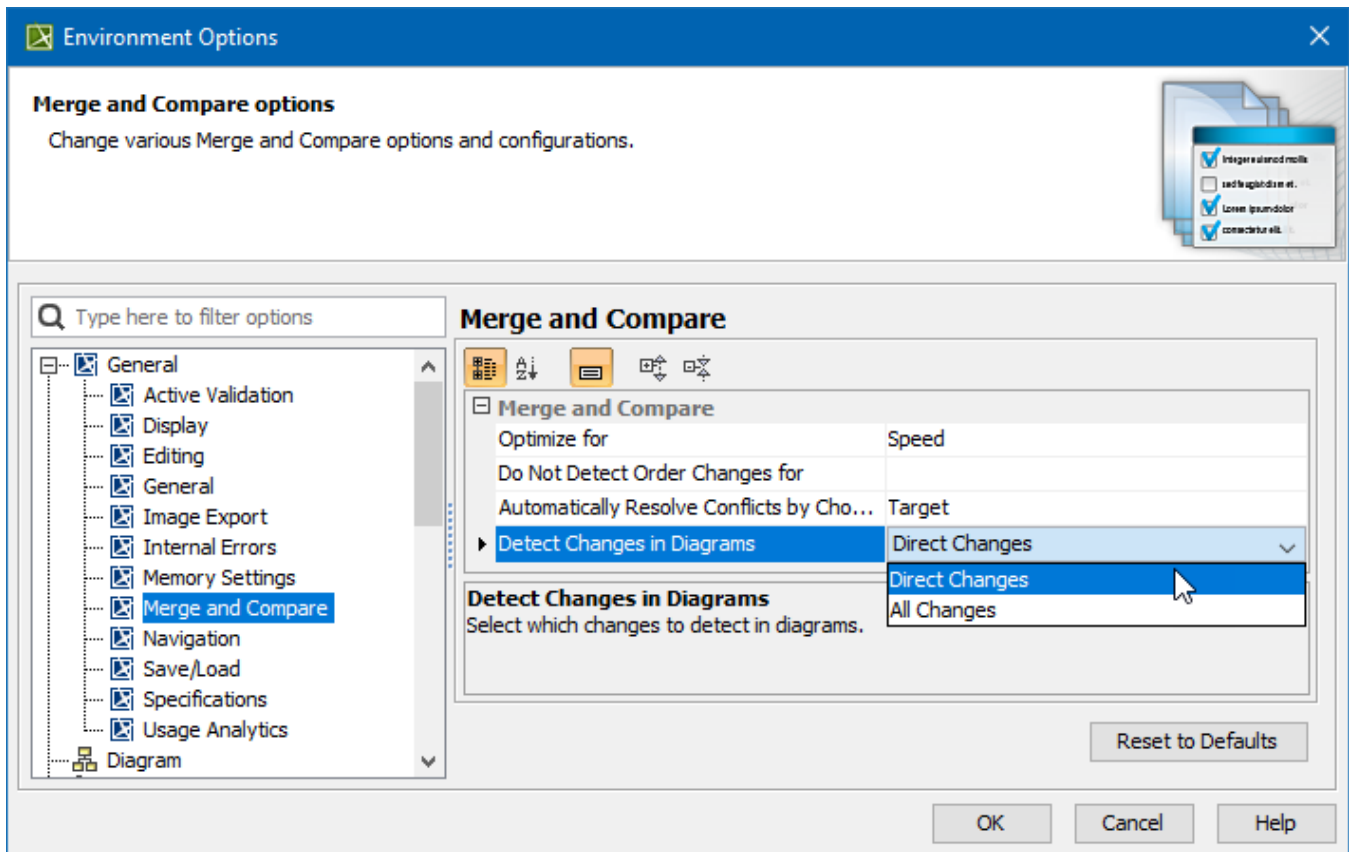
[Learn the benefits of Cameo Collaborator for Teamwork Cloud compared to Cameo Collaborator for Alfresco >>](#)

[Learn how to migrate your documents and comments from the Alfresco server to Teamwork Cloud >>](#)

[Back to top](#)

## Detecting Changes in Diagrams During Merge

You can now specify in the **Environment Options** dialog whether to compare only the direct or all the changes in diagrams during the Project Merge and Project Comparison operations. By default, only the changes made by the user in loaded (open) diagrams are analyzed, leaving out unintentional diagram changes that occurred due to indirect changes in the model. This feature not only eases both merge and project comparison processes for the user since the number of diagrams with changes is considerably reduced but also optimizes modeling tool performance.



An Environment option to specify the changes to detect in diagrams.

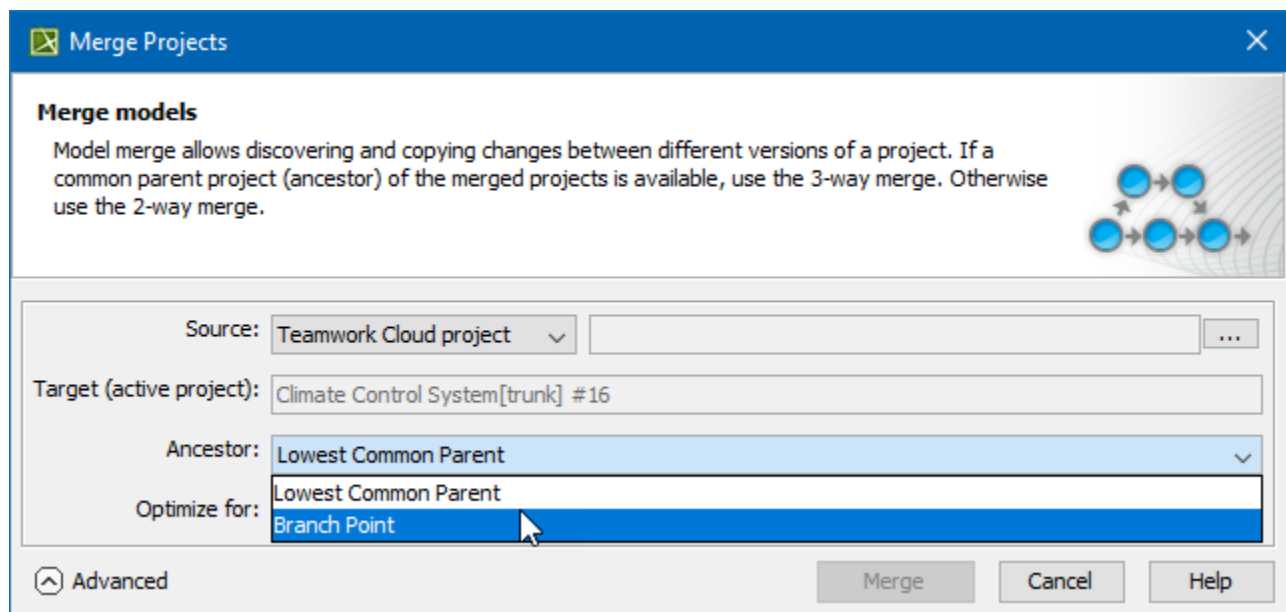
Learn more about diagram changes in [model merge](#) and [project comparison](#) >>

[Back to top](#)

## Further Merge Usability Improvements

The model merge has undergone further usability improvements. From now on, changes from the Target and Equivalent Changes are automatically hidden by default, meaning that only the Source changes are shown. As a result, fewer changes need to be reviewed by the user.

What is more, the model merge has been extended by adding a capability to select which ancestor calculation algorithm to use. You now have the freedom to choose a Branch Point as an ancestor for your merges. This is especially useful in those cases when merge results become too complex to understand and analyze due to previously rejected changes. By default, Lowest Common Parent ancestor calculation algorithm is used.



Selecting the ancestor for future merges in the Merge Project dialog.

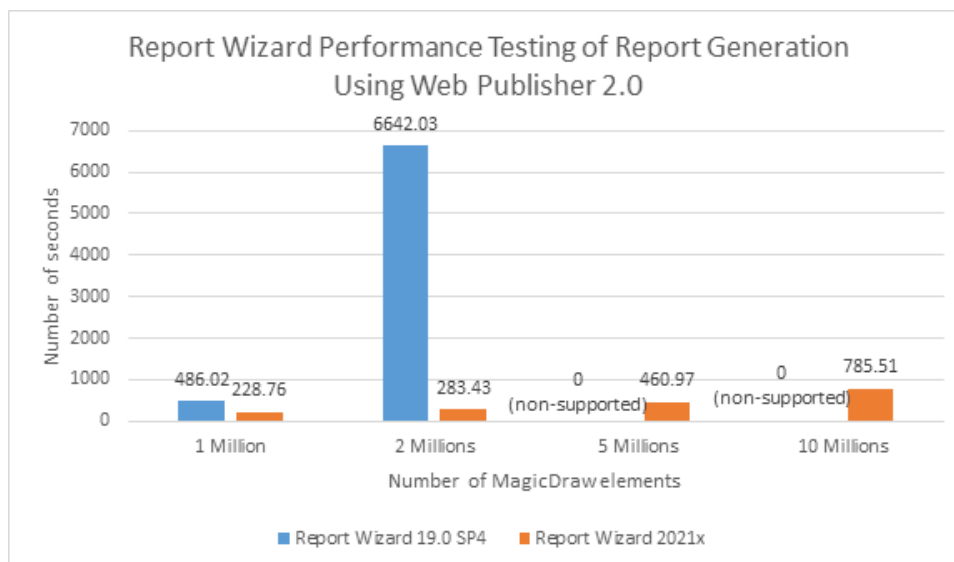
[Learn more about merge types in Teamwork Cloud >>](#)

[Back to top](#)

## Other Features

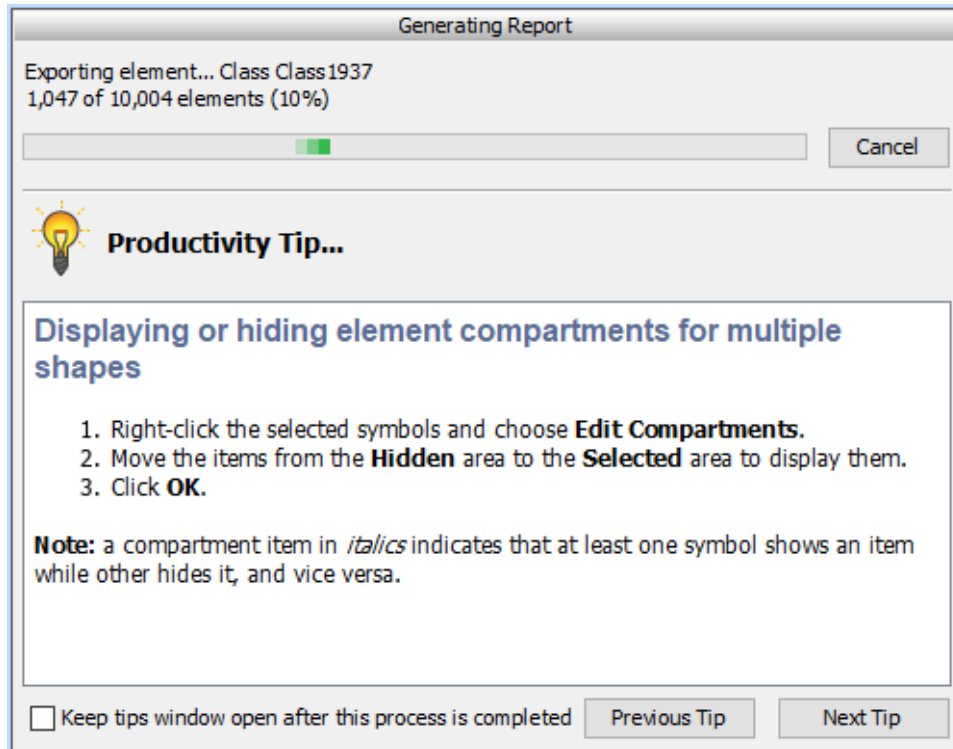
### Report Wizard

- With a significant improvement in report generations for large-scale MagicDraw projects, Report Wizard 2021x has now been equipped to more efficiently generate reports using Web Publisher 2.0 templates of projects, with less time required and supporting more elements than earlier versions of the product.



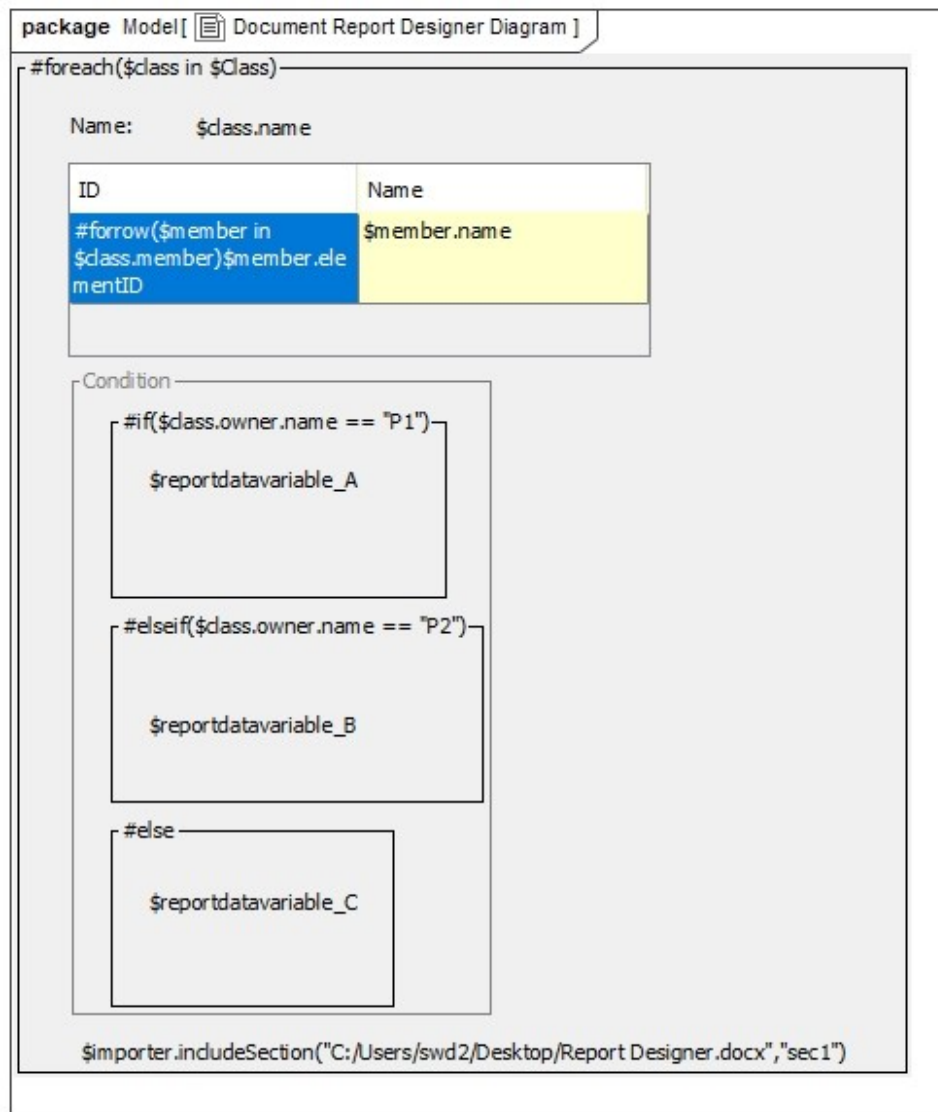
A bar chart displaying the performance testing of report generation from Report Wizard 19.0 SP4 and 2021x using Web Publisher 2.0.

- You can view the overall progress of generating reports deploying Web Publisher 2.0 through the progress bar and its displayed success percentage.




The progress bar with the success percentage shown above when generating reports using Web Publisher 2.0.

- A more effective tool of the Document Report Designer diagram is now available for conveniently drafting and designing new extensive templates of the Microsoft Word Document (DOCX) format. [Discover more about Document Report Designer >>](#)



Document Report Designer for drafting and designing new templates of the Microsoft Word Document (DOCX) format.

- With the Spreadsheet Report Designer provided in Report Wizard 2021x, you are now capable of effectively designing and generating Microsoft Excel Spreadsheet (XLSX) format. [Find out how to use Spreadsheet Report Designer >>](#)

package Model[
 Spreadsheet Report Designer
]

Name	Attribute	Documentation
#forrow(\$class in \$Class)\$class.name	\$class.attribute	\$class.documentation#endrow

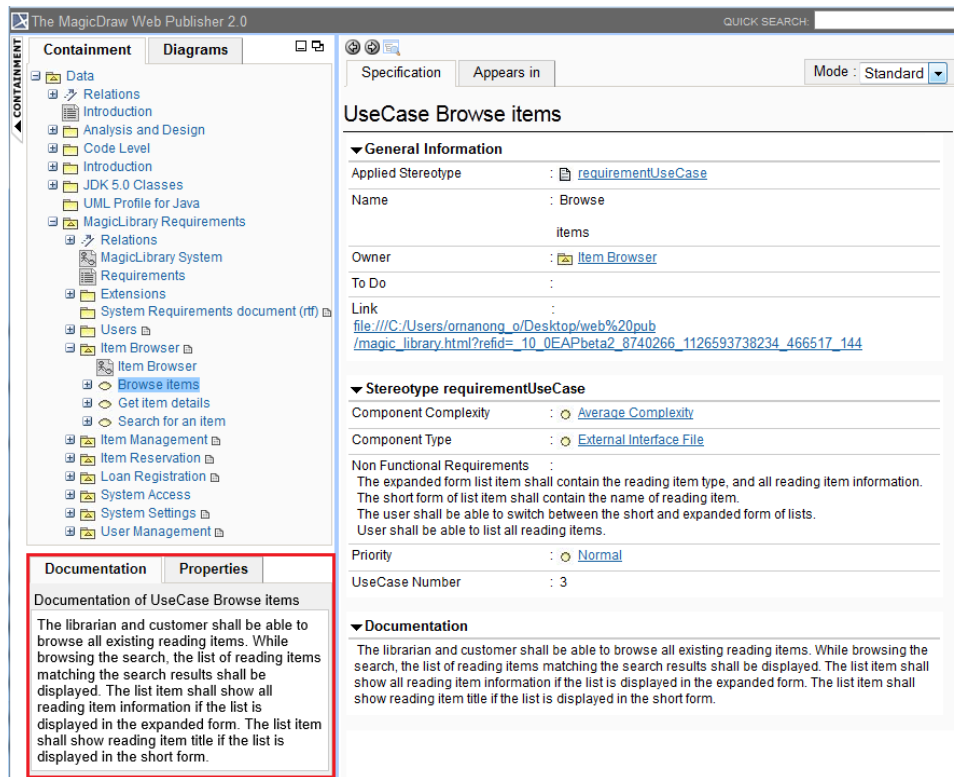
Interface Name	Documentation
#forrow(\$interface in \$Interface)\$interface.name	\$interface.documentation#endrow

---

#forpage(\$signal in \$Signal)	
\$signal.name	\$signal.toDo
#endpage	

- Spreadsheet Report Designer for designing and generating the Microsoft Excel Spreadsheet (XLSX) format.
- Web Publisher 2.0 now has the **Quick properties** panel, at the lower left (similar to MagicDraw), to show the documentation settings in the **Documentation** tab and properties in the **Properties** tab of elements selected in the diagram and from the Containment tree. [Learn more about the new Quick properties panel >>](#)





The Quick properties panel: Documentation and Properties tabs.

- The capability of **\$report.isEmpty(obj)** has been specially improved to check HTML String whether it is empty or not. [Learn more about using this report tool >>](#)
- The multi-field sorter is now available as a function for sorting a collection of elements in ascending or descending order by deploying multiple sorting properties, rather than merely a single property as in previous versions. [Find out more about the multi-field sorter >>](#)
- You can now sort elements by using a tag in applied stereotypes, regardless of being customized. [Learn more about this capability of the sorter tool >>](#)
- You can utilize a new sorter function for sorting elements as they appear in the Containment tree. [Discover how to use this sorter tool >>](#)
- With a new option reducing XML meta-data file name length, the error of Web Publisher 2.0 files with lengthy names has been fixed. [Know more about this report variable in Web Publisher 2.0 >>](#)
- Single or double quotes can now be interchangeably used in both of the **#includeSection** and **#sectionBegin** directives and **\$import**. **includeSection(templateName, sectionName)** of the Import Tool.
- You can now access and list property objects (including DSL) classified in the PropertyGroup of customized stereotypes. [See how the report tool works this way >>](#)
- Reference bookmarks and their links can be created for DOCX numbered items. [Learn about using these bookmark tools >>](#)
- Functions for displaying lists of properties in property groups for given elements and stereotypes are ready to use. [Learn how to use this group of report tools >>](#)

## Other

- The automatic UAF, SysML, and BPMN project migration has been enhanced. The projects are migrated silently and now no additional confirmation is required.

## Key Issues Fixed

The following key issues have been fixed with this version:

[Back to top](#)

### Magic Cyber Systems Engineer Documentation

- [Magic Cyber Systems Engineer 19.0 LTR SP2](#)
- [Magic Cyber Systems Engineer 19.0 LTR SP3](#)
- [Magic Cyber Systems Engineer 19.0 LTR SP4](#)
- [Magic Cyber Systems Engineer 20.0 LTR](#)

\$body