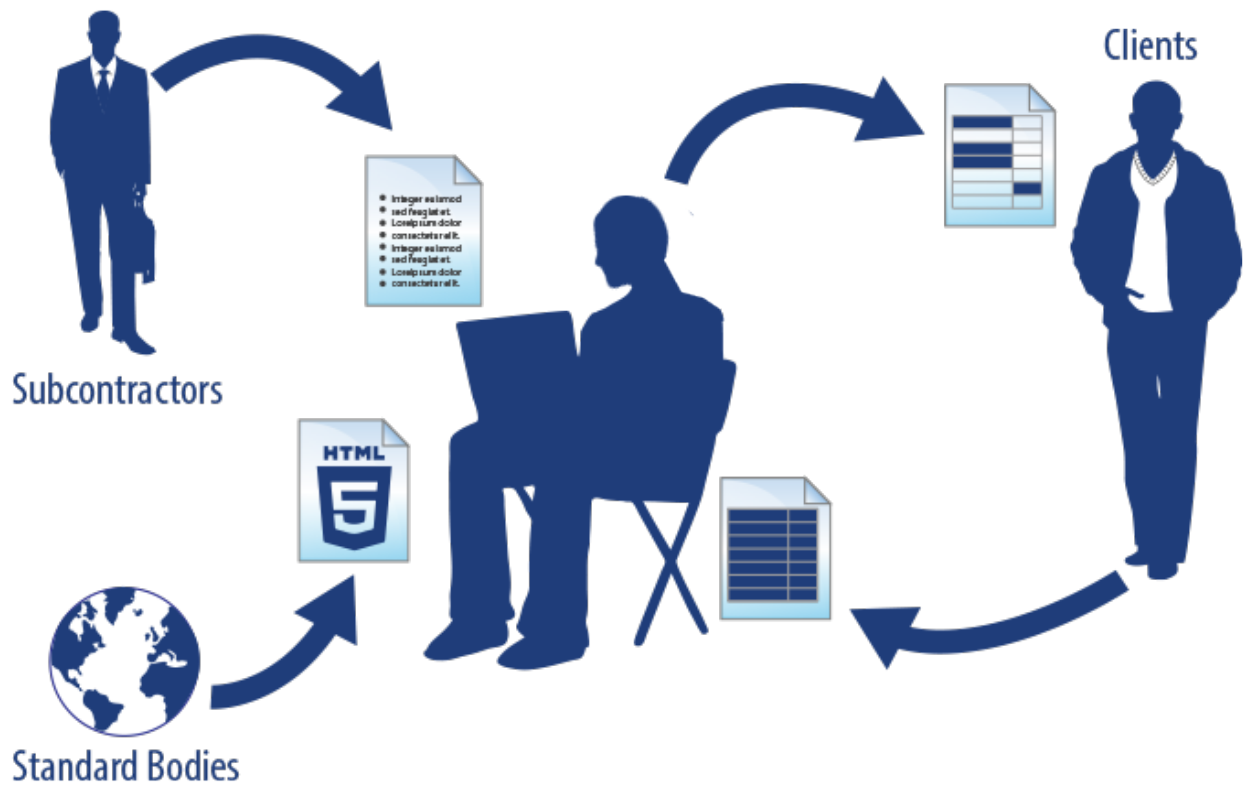


What's new in Cameo Business Modeler 18.1 FR

Released on: January 15, 2015

Easy Transition from Documents to Models

Good news for modelers, who frequently exchange information with project stakeholders that are not modelers and work exclusively with documents! Information exchange becomes easier and faster, because **now you can copy listed texts and tables to your Cameo Business Modeler project** directly from documents, web pages, email messages, presentations, or other text sources.



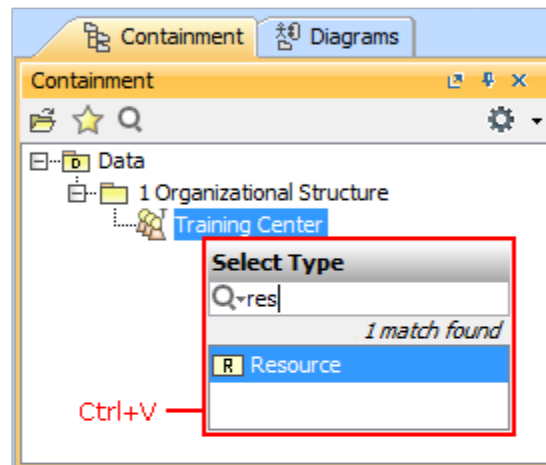
When you copy a listed text, each item of this list becomes a new named element in your model (to simplify the creation, basic numbering and bullets are not reproduced in the model).

Elements can be created either in the Containment tree or on the diagram pane, as you can see in the following figures.

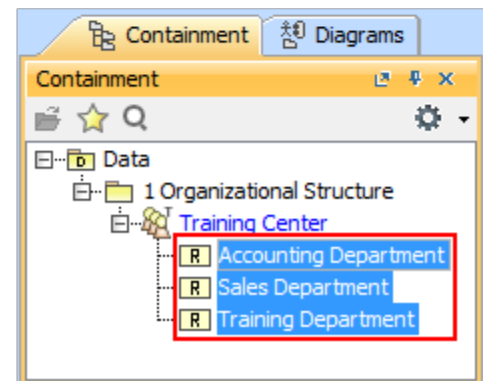
Copy the list

- Training Department
- Sales Department
- Accounting Department

Paste the list in the Containment tree



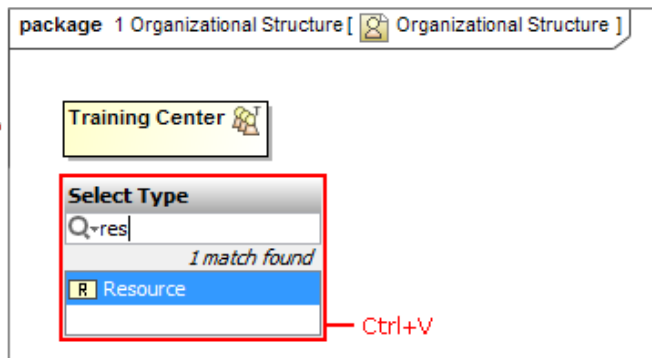
The elements are created



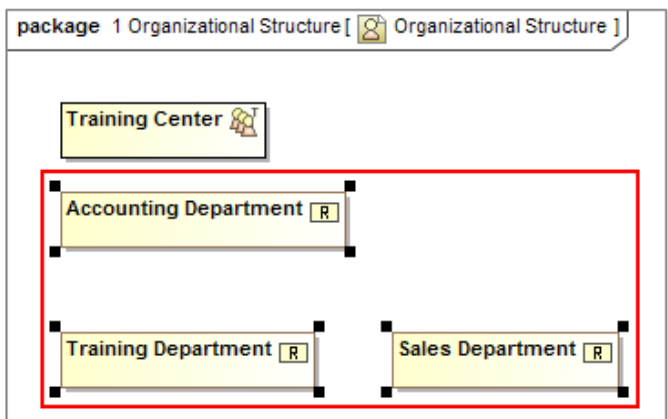
Copy the list

- Training Department
- Sales Department
- Accounting Department

Paste the list on the diagram pane

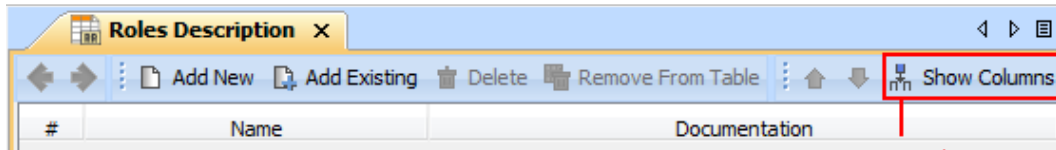


The elements are created



When you copy a table, each row becomes the corresponding element with its properties. If elements already exist in the model, the information updates.

1. Create a table

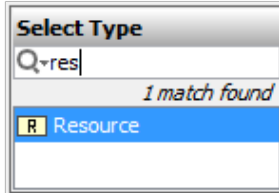


2. Choose columns

Copy the table

	A	B
1	Term	Description
2	Training Department	The department is responsible for providing trainings and consultations.
3	Sales Department	The department is responsible for organizing training classes, finding participants for training classes, and the registration of participants.
4	Accounting Department	The department is responsible for payrolls, cash collections, cash payments, procurement, and inventory property accounting.

Press Ctrl+V



The rows display created elements

The screenshot shows the 'Roles Description' window with the table containing three rows of data. Each row has a blue background and a yellow 'R' icon in the 'Name' column.

#	Name	Documentation
1	Training Department	The department is responsible for providing trainings and consultations.
2	Sales Department	The department is responsible for organizing training classes, finding participants for training classes, and the registration of participants.
3	Accounting Department	The department is responsible for payrolls, cash collections, cash payments, procurement, and inventory property accounting.

Projects with File and Report Template Attachments

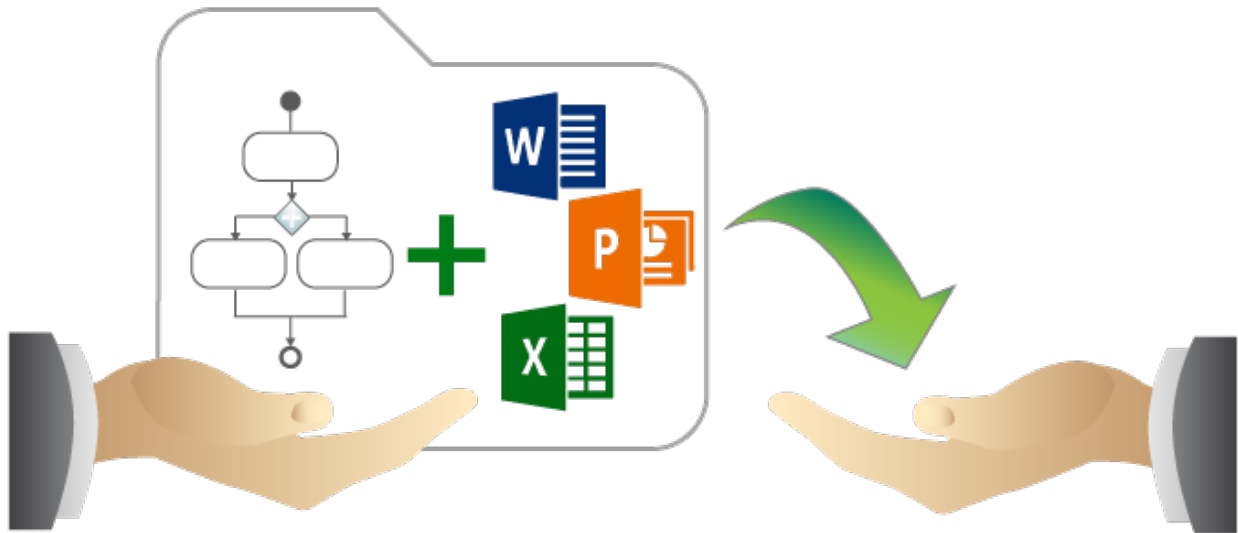
Do you use hyperlinks to external files in your project? If so, then you must be familiar with several common issues that are solved in the latest version of MagicDraw. **Now you can attach any type of file to your project!** Report templates from the local report templates folder can be attached to your project too.



Do you use hyperlinks to external files in your project? If so, then you must be familiar with the common issues:

- The project references the file, but not its particular version. Hence, as soon as the newer version of this file is committed to your version control system, the project starts referencing inappropriate information.
- If you have a systems specification consisting of a set of models and documents, you need to manually collect the referenced files before giving the entire specification to your peers.
- It takes time to establish a commonly accessible location (e.g., a network drive) where you share hyperlinked files from models to your colleagues.

The latest version of the product includes the solution! Now you can attach any type of file to your project simply by dragging the file icon from the file system to the Model Browser. The particular file version becomes embedded in this project. The contents of the attached file can be modified and the changes are instantly saved to the project.



Attached files can be:

- Hyperlinked from model elements.
- Inserted into rich text format (HTML) and displayed on diagrams (image files only).
- Included in reports.
- Reused in other projects.

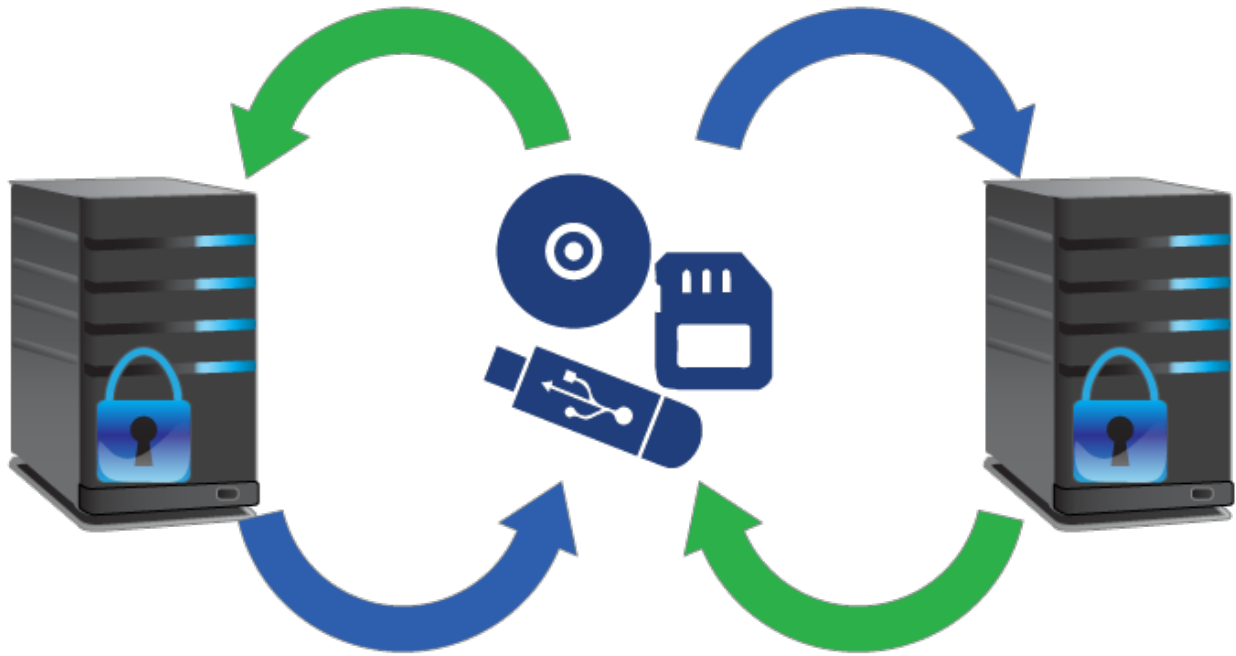
Report templates from the local report templates folder can be attached to your project too. For this, use the new functions of the **Report Wizard** dialog.

Transferring Projects between Consciously Disconnected Environments

Teamwork Servers, which run in consciously disconnected or secured environments, can still exchange projects!



MagicDraw Teamwork Server 18.1 supports transferring project data from one Teamwork Server to another by using any external storage device, such as CD, DVD, hard disc, or flash memory device. The updated version of the shared project can be transferred back to the sharing server and smoothly merged with the original project version. Furthermore, the same project version can be given to several contributors simultaneously, and the contributions to the model they make can be successfully merged as well.



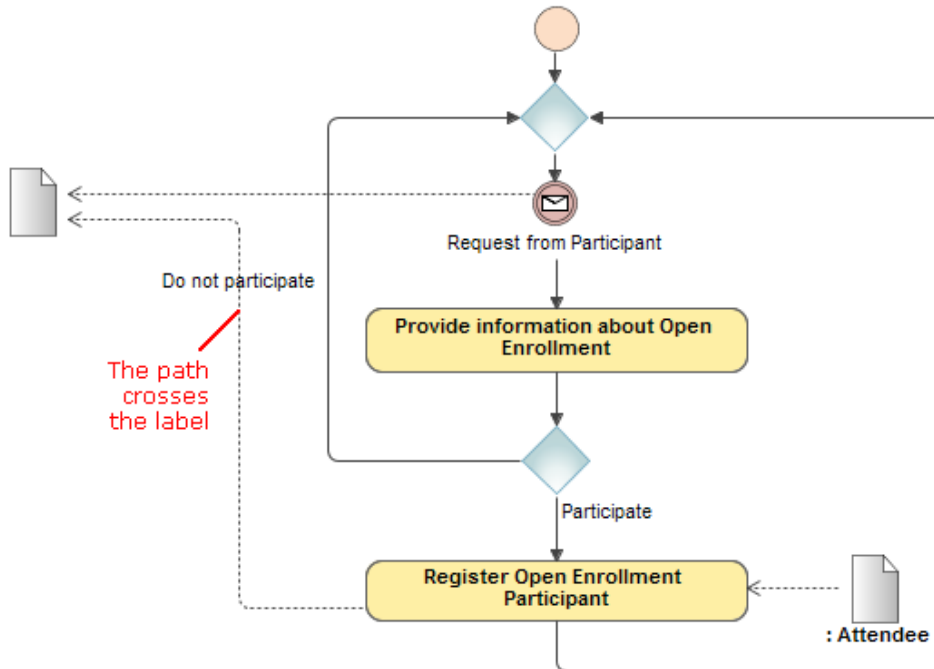
Increased Modeling Efficiency

Smarter diagram layout, simplified search options, and many more features save modeler's time and allow focusing on *what* to model, but not *how* to model and keep the result well-formed.

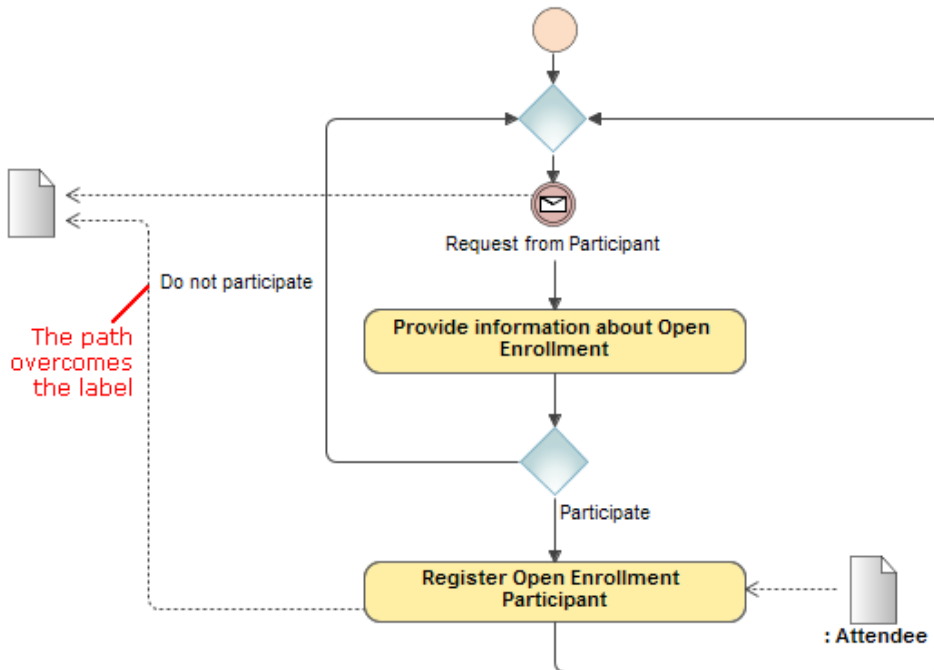
Smarter diagram layout

- When drawing a new path, the layout now overcomes the path labels.

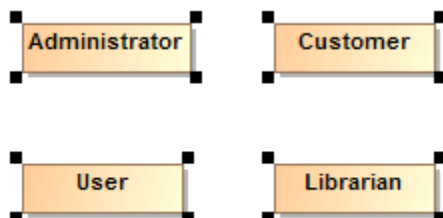
In earlier versions



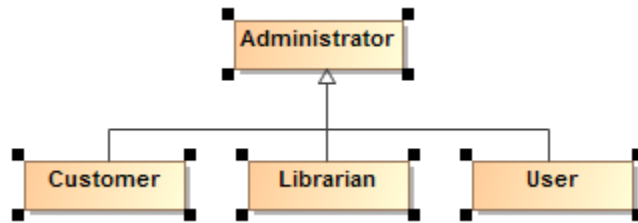
In 18.1



- Symbols, created by dragging a group of elements from the Model Browser, are now arranged on the diagram pane as follows:
 - In a grid, if there are no paths.



- In the Quick Diagram Layout, if there paths among shapes.

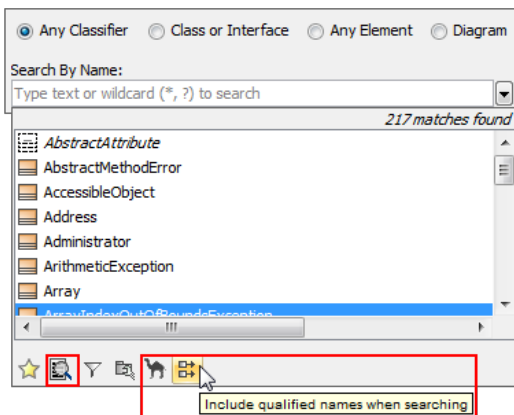


Simplified search options

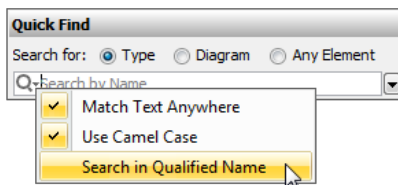
Changing search options in the Quick Find and Element Selection dialogs as well as in autocompletion lists is now easier and more efficient due to the following changes:

- Search phrase specific options, such as one for turning on/off matching anywhere, are now available on a separate menu. In earlier versions, those options resided together with scope filter options.

In earlier versions

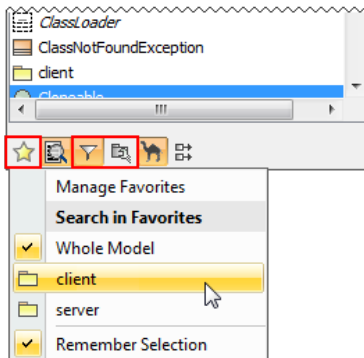


In 18.1

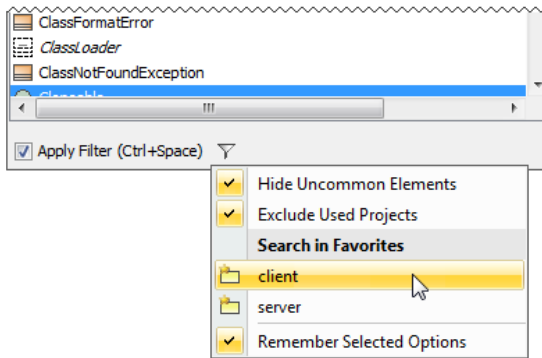


- Filter options are now available on the button menu and can be applied on the search scope or removed from it with a single click.

In earlier versions



In 18.1



- Options are now commands with meaningful names, but not buttons as in earlier versions. It's now easier to find a desired option.

Class usage traceability

You can now trace the Class, when it is used as a Data Object. There are two ways of inspecting these usages:

- On the left side of the Class' Specification window, click **Usage In**.
- From shortcut menu of the Class, choose **Go To > Usage In**.

Highlighting of validation rule failures in tables

Now the results of validation rule failures are marked in tables as well. In case of failure, the entire row is marked.

#	Id	Name	Text
1	TWCAT150	<input type="checkbox"/> Project Categorization	Project Categorization
2	TWCAT150.1	<input type="checkbox"/> Category Types	Category Types
3	TWCAT150.1	<input type="checkbox"/> Category Definition	Category shall be understood as a concept which enables visual grouping of projects.
Not unique element number has been identified. The identifier Id TWCAT150.1 of the Category Definition element duplicates with: Id TWCAT150.1 of the Category Types Categorization::Requirements::Project Categorization::Category Types user-defined categories are assigned to this			
4	TWCAT150.2.1	<input type="checkbox"/> System Category	category.

Other News

Conceptual changes in modules

Starting from this version, module is referred as a used project. Keywords "used project" and "project usage" replace the keyword "module" everywhere in Cameo Business Modeler UI.

Miscellaneous

- Cameo Business Modeler no longer forces the selection of a Metaclass on a Stereotype creation. You can change the Metaclass later from the stereotype's smart manipulator toolbar.
- Selecting a Stereotype or Metaclass no longer requires using the mouse. Use the Up and Down Arrow keys to walk through the lists, press Ctrl+Spacebar to select a desired item, and then press Enter to apply the selected Stereotype or Metaclass.
- Derived properties created using simple navigation operations are now editable.
- The position of text within a shape can be set to the top, center, or bottom by using a new **Text Vertical Position** property in the **Symbol Properties** dialog.
- Multiplicity value of an association end can now be edited directly on the diagram pane. Just select the multiplicity area and press F2 to switch it to the edit mode. Then press Ctrl+Spacebar or Ctrl+Backspace to see available suggestions and choose one of them or type a new value.
- Standard and custom subtypes of the selected element type can now be optionally included into search results. For example, if you need to search for packages as well as for profiles, models, smart packages, and other custom subtypes of the Package, select the new **Include Subtypes** check box on the **Select Element Type** dialog after you choose the Package as element type.
- Table export to a Microsoft Excel worksheet was improved, and multiline textual values are no longer stripped in the worksheet, if they are stripped in the table - actual, but not displayed data is exported.
- When working with a server project, you can now choose whether to ignore validation rule failures just for you or for all users contributing to that server project.
- Foreign, non-editable projects transferred from other servers can now have domestic, editable branches on the current server.

File format changes

File format reflects changes made in UML metamodel.

Open API changes

UML metamodel related changes

- Removed associations:
 - *parameter* between ValueSpecification and Parameter
 - *parameter* between Pin and Parameter
- Added associations:
 - *syncElement* between two Elements

IntelliJ IDEA project for Cameo Business Modeler development

An IntelliJ IDEA project with modules for developing two sample plugins was pre-configured and can be found in *<Cameo Business Modeler 18.1 installation directory>/openapi/ide*.

Fixed Issues

You can check [the list](#) of publicly available or your own reported issues fixed in version 18.1 FR.