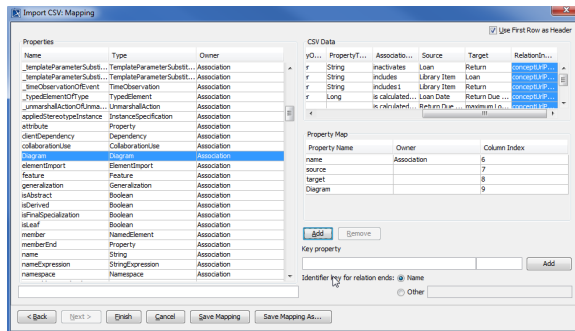


Importing associations to a class diagram

From the last figure in the preceding section, you see that the properties for the **Customer** class have been added, but no associations are present yet. The following example shows you how to add some **associations** to our **Class Diagram** from above.

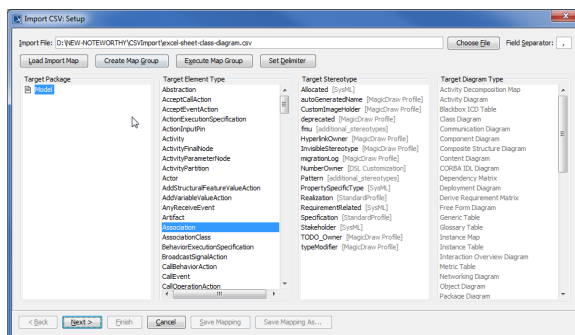
To import association between classes

1. Click **File > Import From > Import CSV** to open up the CSV Import plugin wizard interface, see figure below.



2. Click **Choose File** to browse and select your CSV file.
3. Select a **target** package.
4. Select **Association** as the target element type.

5. Click **Next >**. The **Import CSV: Mapping** dialog will open, see figure below.

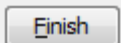


6. Map **AssociationName** from the CSV file and name from the target **Properties** list.
7. Keep the name property from the **Properties** list selected, and also keep the **AssociationName**

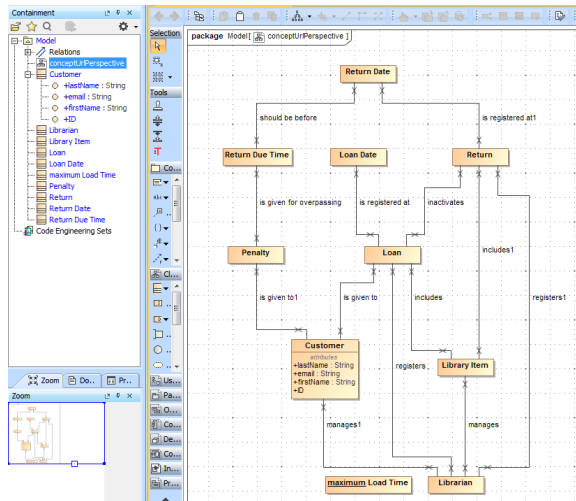
column from CSV data source selected, then click the **Add** button beside the **Key Property** textboxes. The **Key Property** textboxes should populate as shown in figure above.

8. Map the column **Source** from the CSV file and select **source** from target **Properties** list.
9. Map the column **Target** from the CSV file and **target** as the property type.
10. Map the column **RelationInDiagram** from the CSV file and **Diagram** from the **Properties** list.

11. Select the **name** row from the **Property Map** table and then click the **Add** button beside the **Key Property** textboxes. The **Key Property** textboxes should populate.



12. Click **Finish**. Your MagicDraw **containment tree** should be updated with the recently imported associations, see figure below.



You can see the imported **Class Diagram** is now populated with **Classes**, **properties** and **relationships** as shown in figure above.