

Opening Components as a Data Source

A Component is a container in a project that you can use to organize artifacts. When connected with a DOORS Next Generation Data Source, DataHub lists Components under each project. The main Data Source tree still displays artifacts from default Components. You can also open additional Components as another Data Source. From the Component Data Source, you can perform all DataHub operations like the main Data Source.

Easy Start Sample

-  Explore Dashboard
-  Manage Project Area

Components

Create Component

Architecture

Show Artifacts Show Modules

Easy Start Sample

Show Artifacts Show Modules


Sub-systems

Show Artifacts Show Modules

User Requirements

Show Artifacts Show Modules

Requirements Management (/rm)



Easy Start Sample | Easy Start Sample

Project Dashboard Artifacts Reviews Reports

Artifacts

All Modules Collections

⏪ Create

Type to filter artifacts by text or by ID

?

⏮

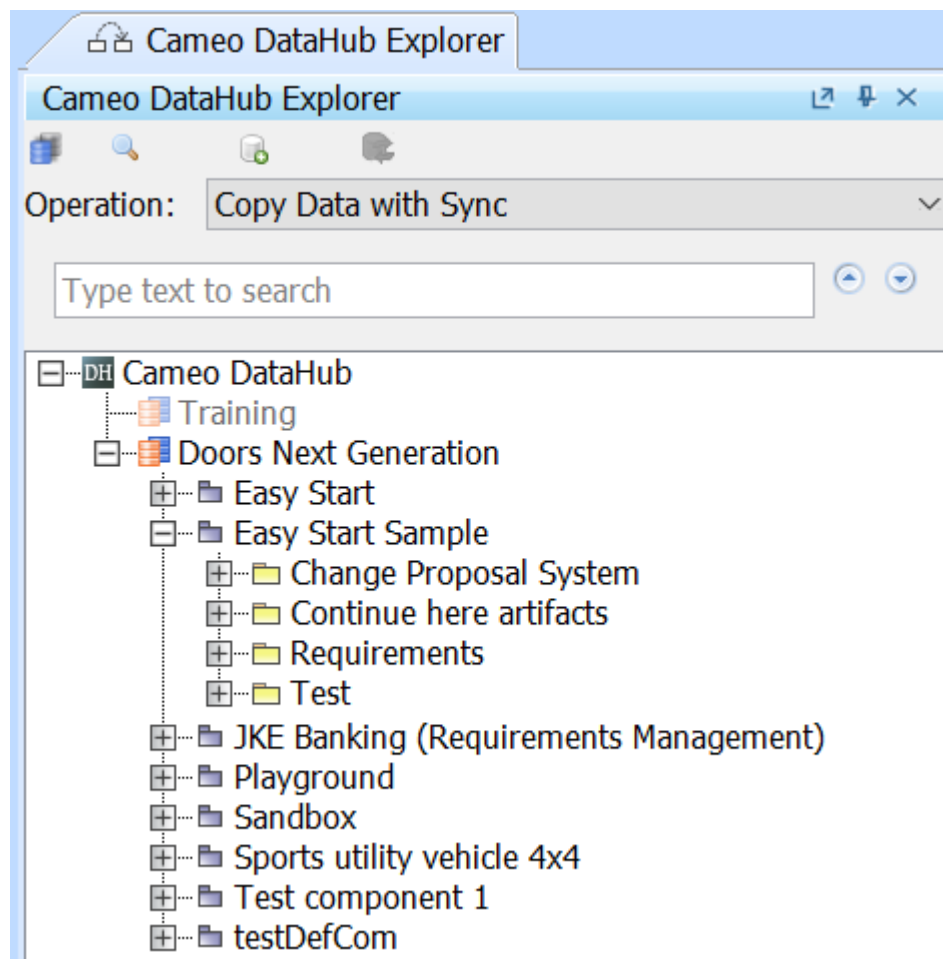
Folders Views

[-] Easy Start Sample

- [+] Change Proposal System
 - Continue here artifacts
- [+] Requirements
- [+] Test

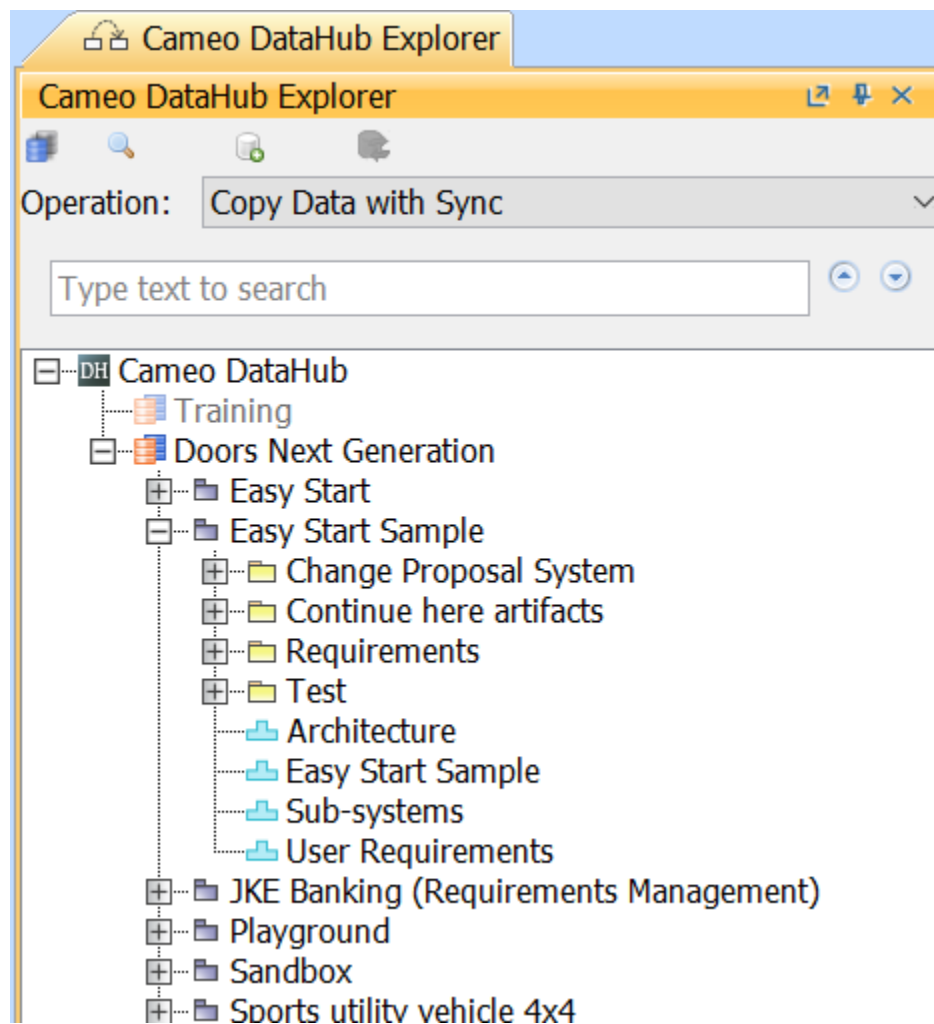
ID

Components in DOORS Next Generation.



Components in DOORS Next Generation under the Easy Start Sample project in Cameo DataHub Explorer.

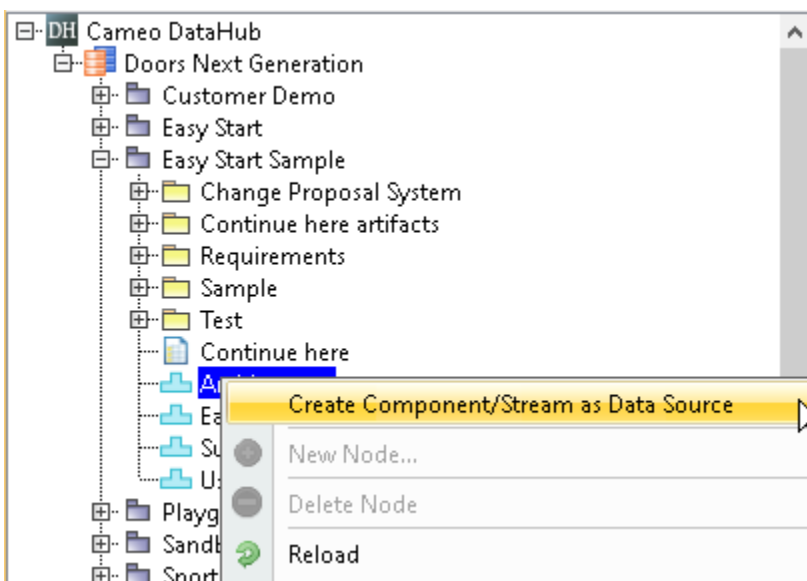
In the earlier versions of DataHub, DOORS NG Data Source only showed artifacts from default Components. However, in this version, DataHub still shows artifacts along with dummy Components; thus DataHub work from previous versions will not be affected.



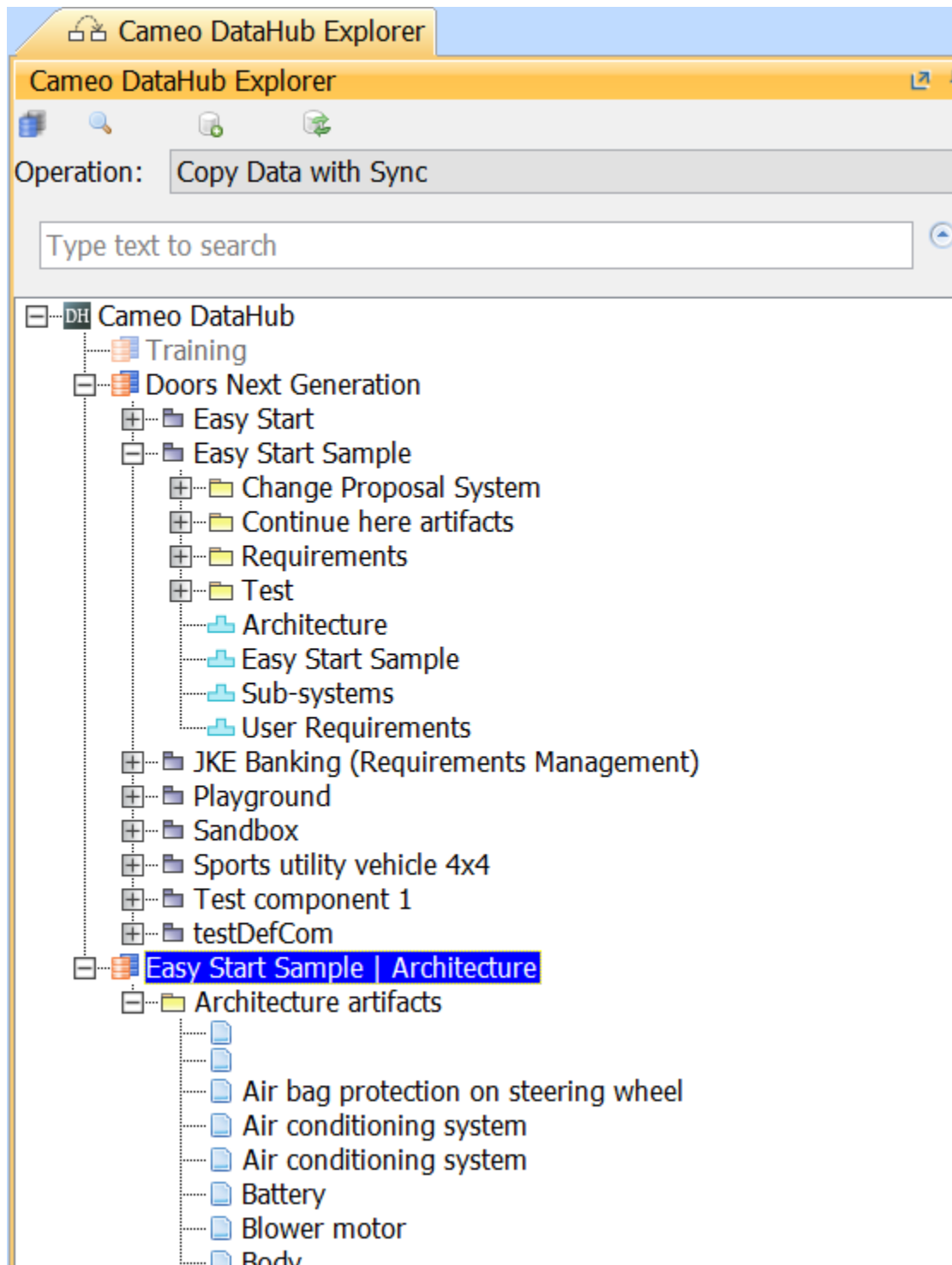
Dummy Components (in blue) shown with artifacts.

To open a Component as a new Data Source

- Right-click any dummy Component (shown in blue) and choose **Create component/stream as Data Source**.



After completing the above step, Cameo DataHub will create a new Data Source and show the artifacts. This Data Source will always be connected with the selected Component.



The newly created Data Source (highlighted) from the newly open Architecture Component.