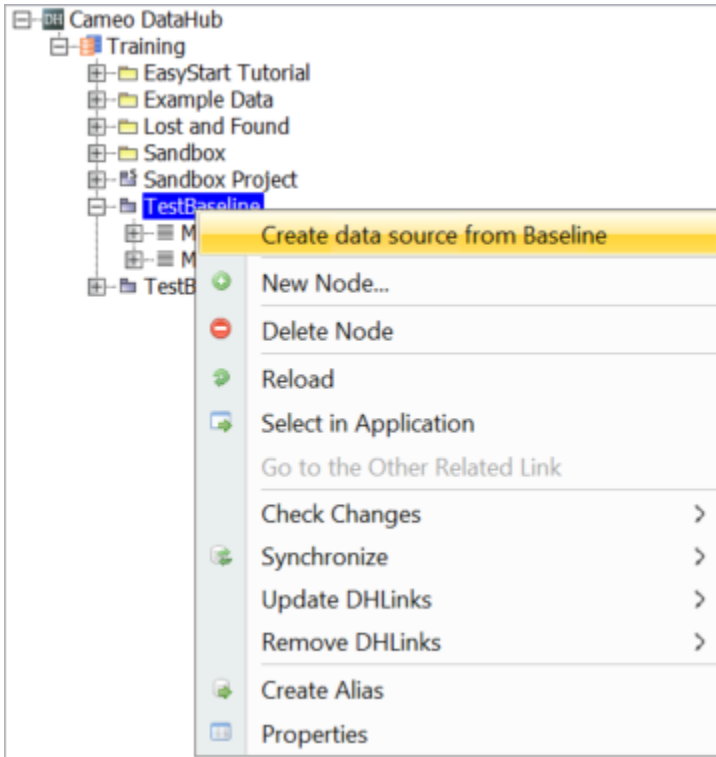


DOORS Baseline Data Sources

You can access DOORS Baseline by adding a new Baseline Data Source.

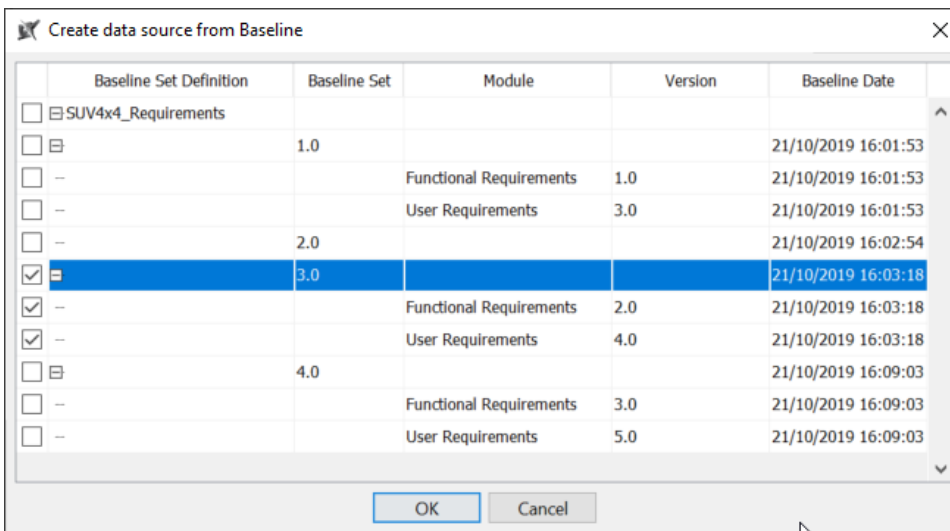
To create the Baseline Data Source

1. Right-click any folder, project, or module you want to create the Baseline Data Source and select **Create data source from Baseline**.

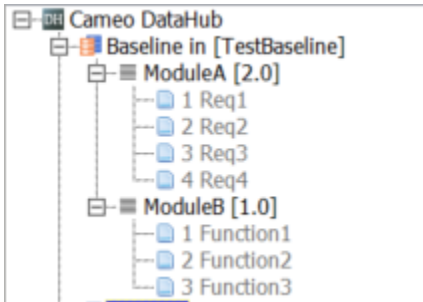


2. The **Create data source from Baseline** dialog opens and lists all Baseline versions grouped by the Baseline set. Do one of the following:

- To create a Data Source with only the selected module, select a particular module version.
- To create a Data Source with all modules in the Baseline set, select a Baseline set version.



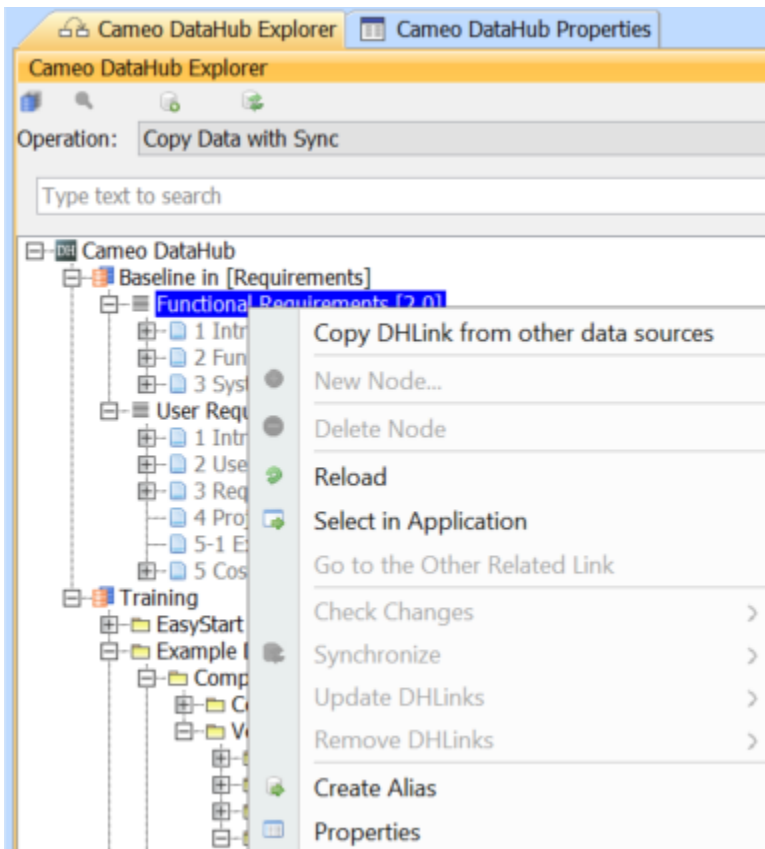
3. Select the Baseline that you want and click **OK**. You will get a new Data Source that contains the modules with the specific version you have selected.



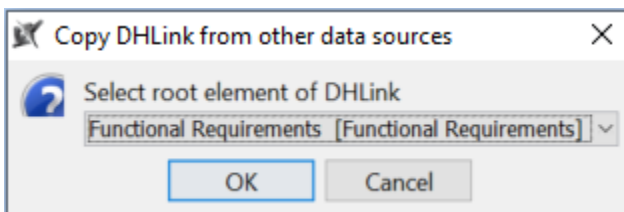
It is possible that your data in DataHub (DHLINK to MagicDraw) work with original DOORS Data Sources or other Data Sources with different Baseline versions. If you also want the newly created Baseline Data Sources to synchronize with those data, you can use the copying function to copy the DHLINKs from other DOORS Data Sources to the new Baseline Data Sources.

To copy the DHLINK to a Baseline Data Source

1. Right-click any module in the Baseline Data Source and select **Copy DHLINK from other data sources**.



2. The **Copy DHLINK from other data source** dialog opens. From the drop-down list, choose the Data Source you want to copy the DHLINK from.



3. Click **OK**. The DHLink will be copied to the new Baseline Data Source.

