

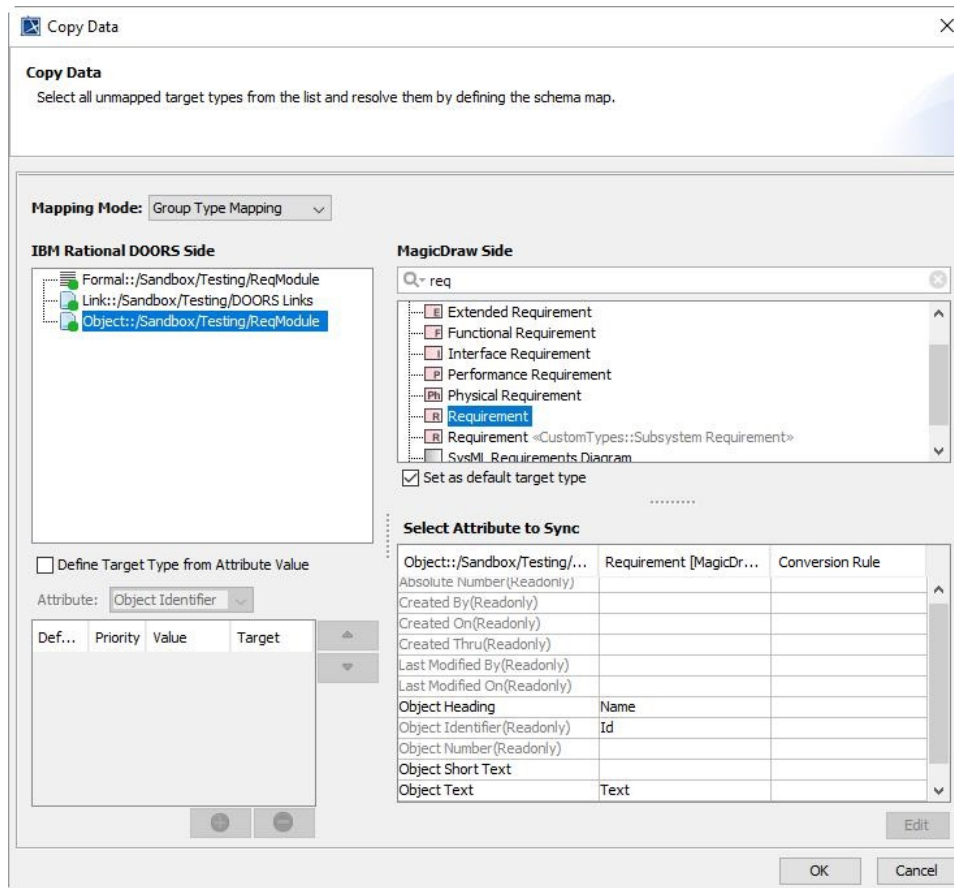
# Copying Requirements to a modeling tool as the SysML Requirement diagram

You can copy text-based Requirements and their associated Use Cases from DOORS or DOORS Next Generation Data Sources by simply dragging the node from the DOORS Data Source to your modeling tool's Containment tree.

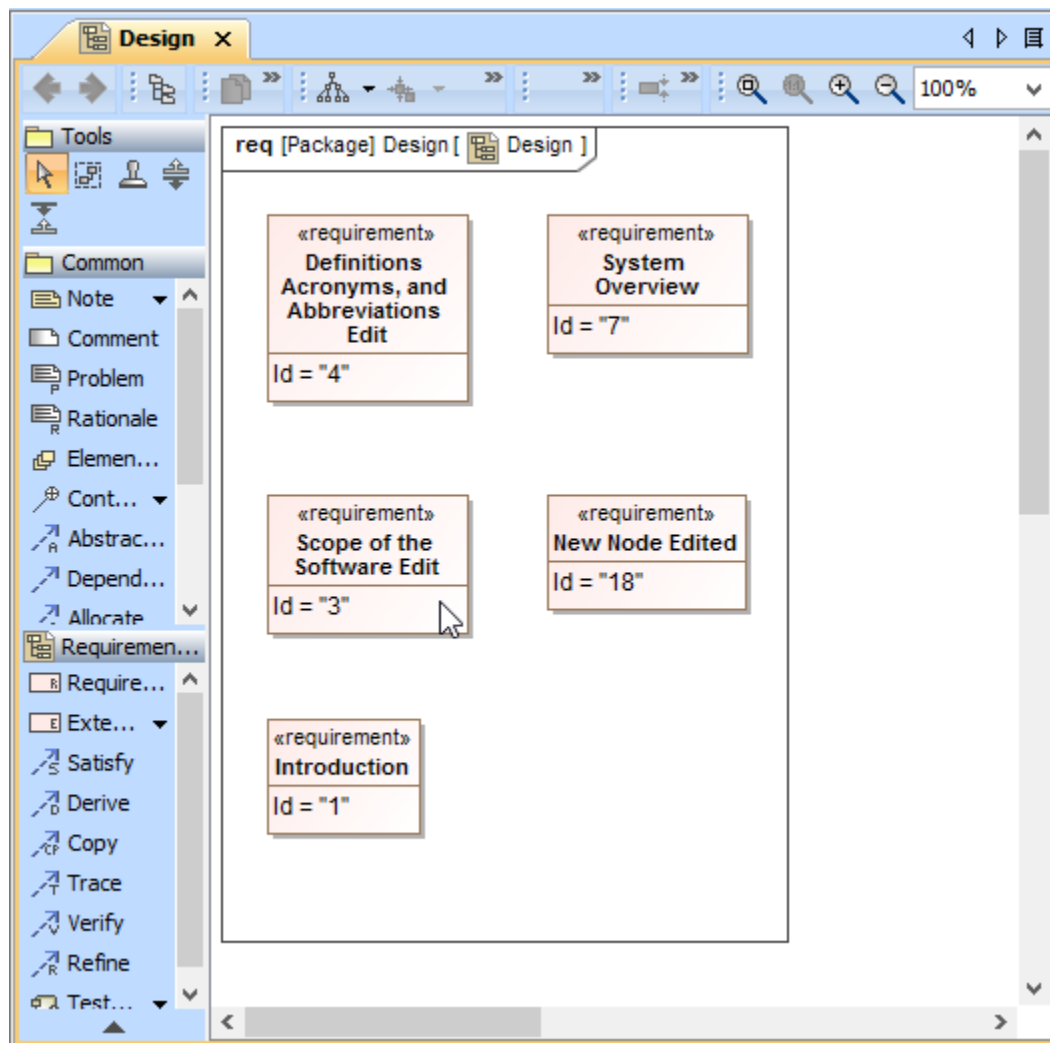
This section deals with how to copy text-based Requirements from IBM® Rational® DOORS® into a UML diagram.

To copy Requirements from DOORS Data Source to a modeling tool as the SysML Requirement diagram

1. [Add a DOORS Data Source](#) or [DOORS Next Generation Data Source](#) in DataHub Explorer.
2. Select a node and drag it from DataHub Explorer to your modeling tool's Containment area.
3. Map the Formal Module to a package and the object to a base stereotype of the Requirement. Click **OK**.



The Copy Data dialog in Group Type Mapping mode when copying Requirements from DOORS to the modeling tool's Containment tree.



The dragged Requirement elements in the Requirement diagram as the result of copying.