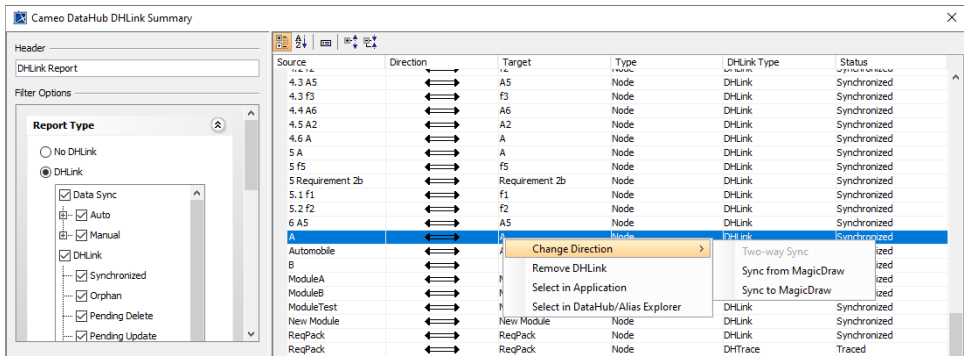


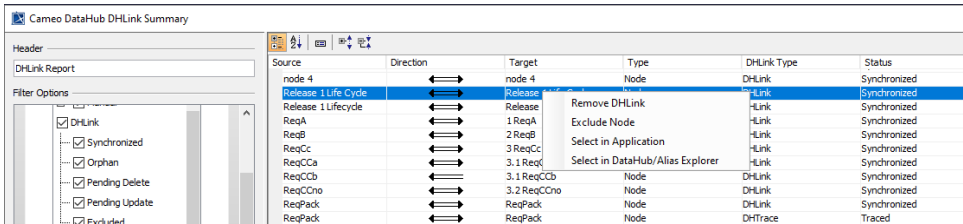
DHLink Summary dialog shortcut menu

To open the shortcut menu in the **DHLink Summary** dialog

- In the **DHLink Summary** dialog, right-click a value in the element. The shortcut menu opens.



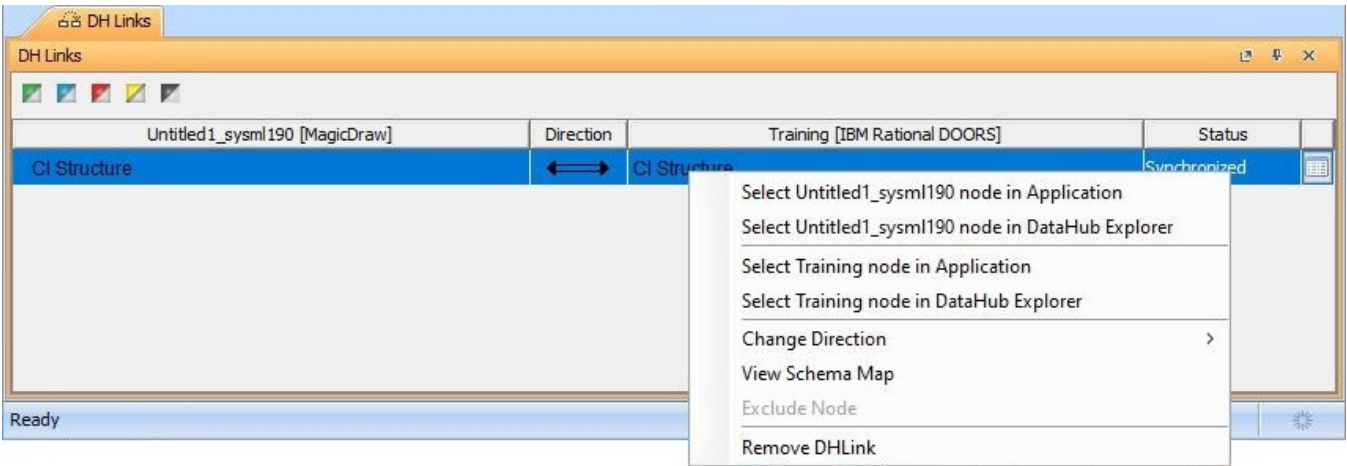
The shortcut menu of the root data node in the DHLink Summary dialog.



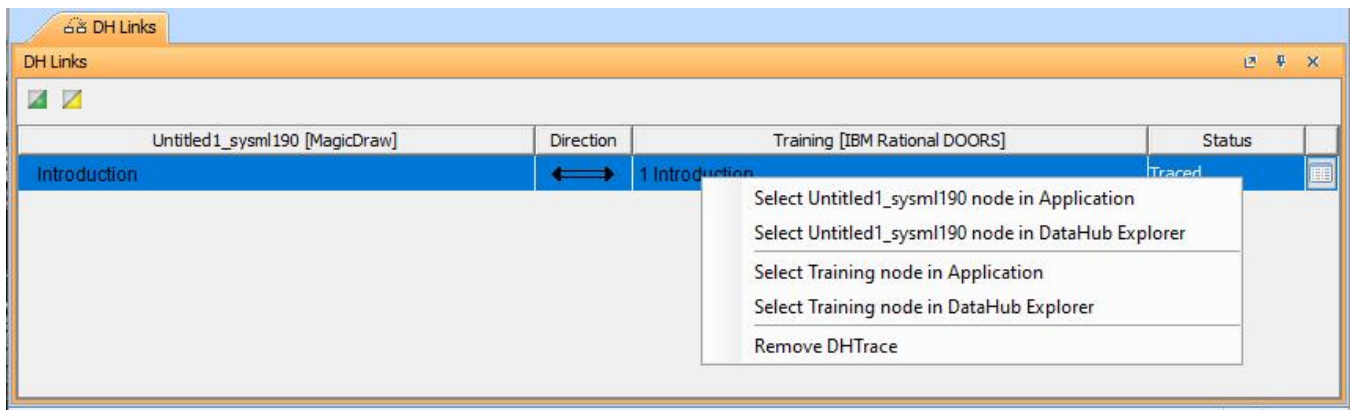
The shortcut menu of a data node in the DHLink Summary dialog.

To open the shortcut menu in the **DH Links** panel

- In the **DH Links** panel, right-click a Data Source in the element. The shortcut menu opens.



The shortcut menu of the synchronized DHLink in the DH Links panel.



The shortcut menu of DHTrace in the DH Links panel.

The table below summarizes the shortcut menu items in the **DHLink Summary** dialog and **DH Links** panel.

Menu	Function
Change Direction (only for the root element)	Changes the direction of synchronization: Sync from MagicDraw and Sync to MagicDraw .
Remove DHLink	Removes the selected DHLink from both of the associated nodes.
Remove DHTrace	Removes the selected DHTrace from both of the associated nodes.
Clear Suspect DHTrace	Clears the Suspect status from both of the associated nodes.
Select <i>MagicDraw project name</i> node in Application	Selects the element in the MagicDraw Containment tree.
Select <i>MagicDraw project name</i> node in DataHub Explorer	Selects the MagicDraw node in DataHub/Alias Explorer .
Select <i>Data Source name</i> node in Application	Selects the node in the original application, e.g., the node originally from DOORS will be opened in the DOORS client application.
Select <i>Data Source name</i> node in DataHub Explorer	Selects the node from other Data Sources, e.g., DOORS, in DataHub/Alias Explorer .
Discard Update (only for the Pending Update status)	Synchronizes the node by discarding the DHLink.
Exclude Node (not for the root element)	Excludes the node from being included for synchronization.
Include Node	Includes the selected node and its child nodes for the synchronization.
Update Pending DHLink (only for the Pending Update status)	Synchronizes the node by updating the pending DHLink.
View Schema Map	Opens the Schema Map Manager dialog.