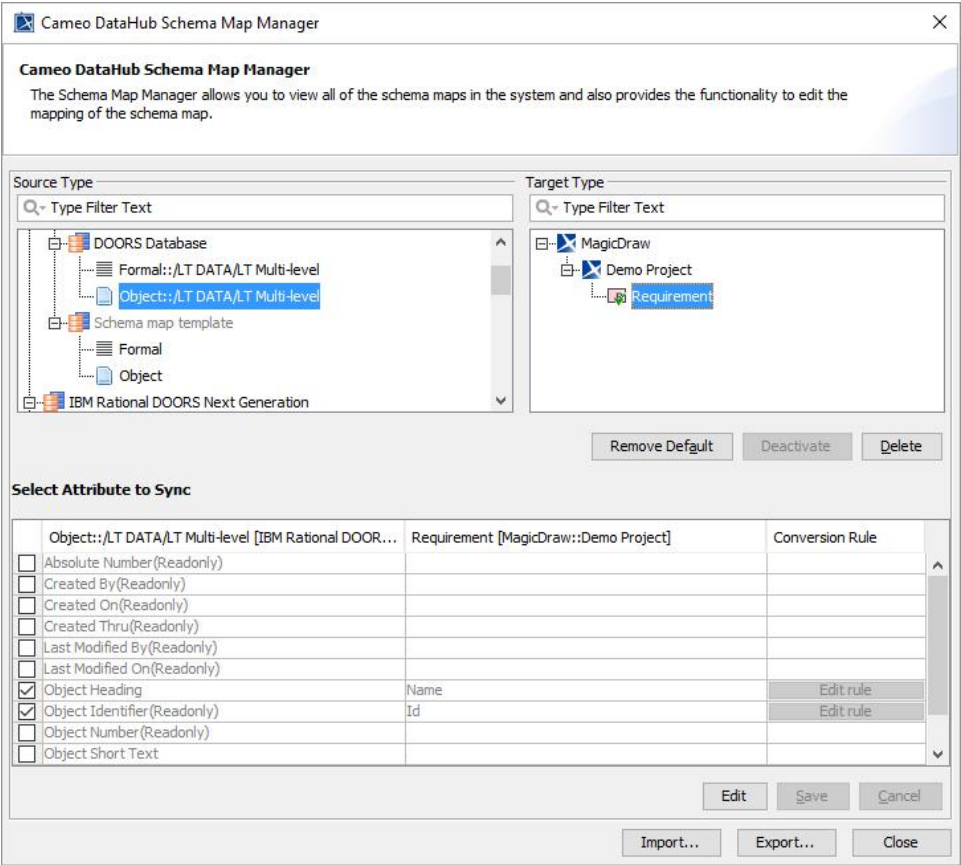


Mapping with Schema Map Manager

The **Schema Map Manager** dialog allows you to see all attributes of both sources and targets. It automates data matching and mapping so that you can integrate data on both sides and make them identical.

To open the **Schema Map Manager** dialog in MagicDraw®

1. From the main menu, click **Tools > DataHub > Schema Map Manager**. The Cameo DataHub **Schema Map Manager** dialog opens.



2. Expand the nodes to see the types that have already been mapped.

You can also select a schema map template in the **Schema Map Manager** dialog by expanding each Data Source. DataHub also allows you to view schema maps used by particular relations. You can right-click an item in the table and select **View Schema Map** to open the **View Schema Map** dialog from that schema map.

View Schema Map
✕

View Schema Map

Schema Map below is used by the selected DHLink. There are two mapping modes which are Simple mode and Define Target Type from Attribute Value mode.

Mapping Mode: Simple

Select Attribute to Sync

	Requirement [MagicDraw::Demo Project]	Object::/LT DATA/LT Multi-level [IBM R...	Conversion Rule
<input type="checkbox"/>	Active Hyperlink(Readonly)		
<input type="checkbox"/>	Documentation		
<input type="checkbox"/>	Element ID(Readonly)		
<input checked="" type="checkbox"/>	Id	Object Identifier(Readonly)	Edit rule
<input type="checkbox"/>	Is Abstract		
<input type="checkbox"/>	Is Active		
<input type="checkbox"/>	Is Final Specialization		
<input type="checkbox"/>	Is Leaf		
<input checked="" type="checkbox"/>	Name	Object Heading	Edit rule
<input type="checkbox"/>	Qualified Name(Readonly)		
<input checked="" type="checkbox"/>	Text	Object Text	Edit rule
<input type="checkbox"/>	To Do		

OK

The View Schema Map dialog showing schema maps used by particular relations.