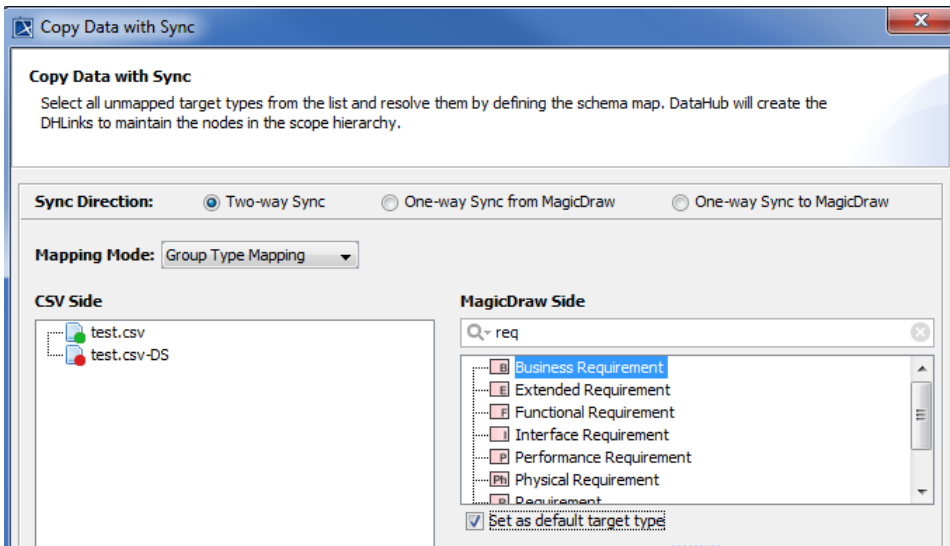


# Defining a target type from an attribute value

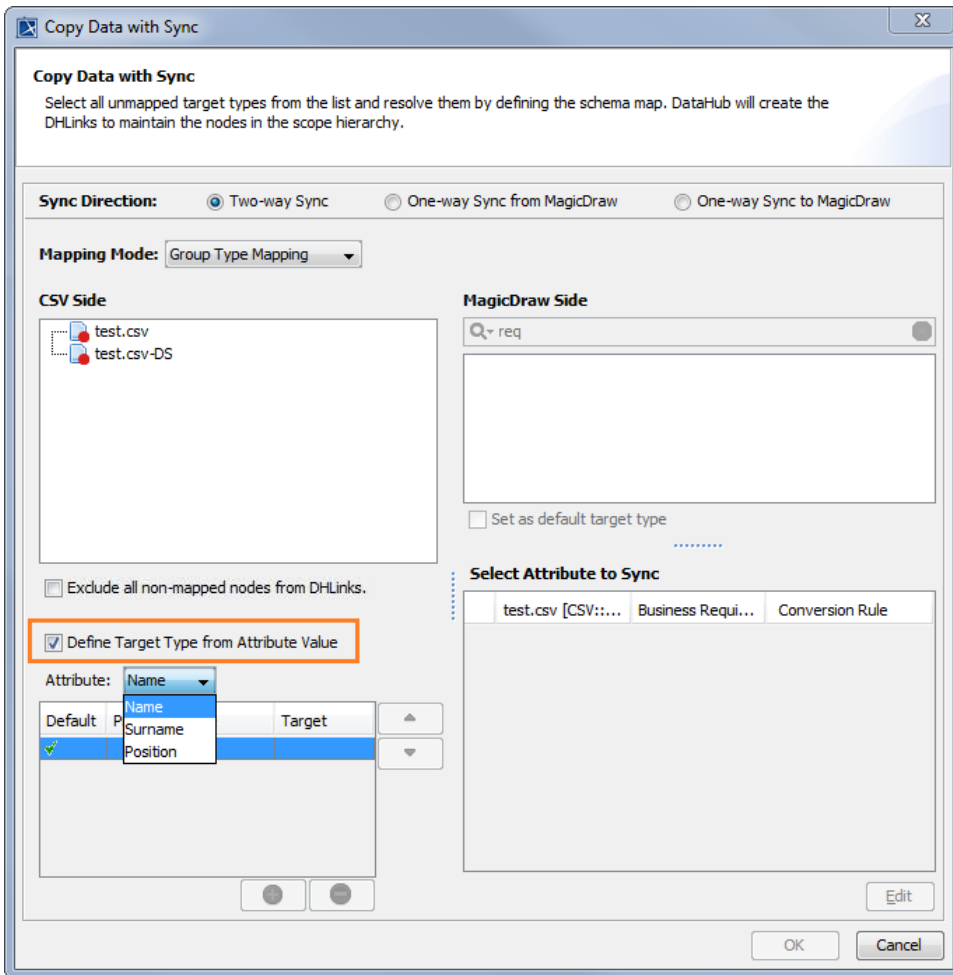
The functionality of synchronization has been additionally simplified with use of the **Define Target Type from Attribute Value** option. The synchronization does not limit only to a simple type-to-type-mapping and attribute-to-attribute mapping but also a target node type can be defined dynamically according to a specified attribute value.

To copy data and define a target node type from an attribute value

1. From the **Operation** drop-down list in DataHub Explorer, select one of the DataHub operations to copy data. The **Copy Data with Sync** dialog (depending on the operation you have selected) opens.
2. From the **Mapping Mode** option, select **Group Type Mapping**.



3. Select a source node type to start mapping.
4. Select the ☐ **Define Target Type from Attribute Value** check box.



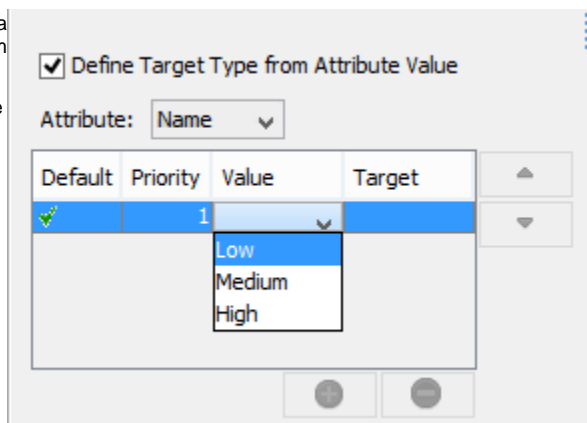
5. From the **Attribute** drop-down list, choose an attribute to define a target node type.
6. Specify the attribute value to do the mapping.



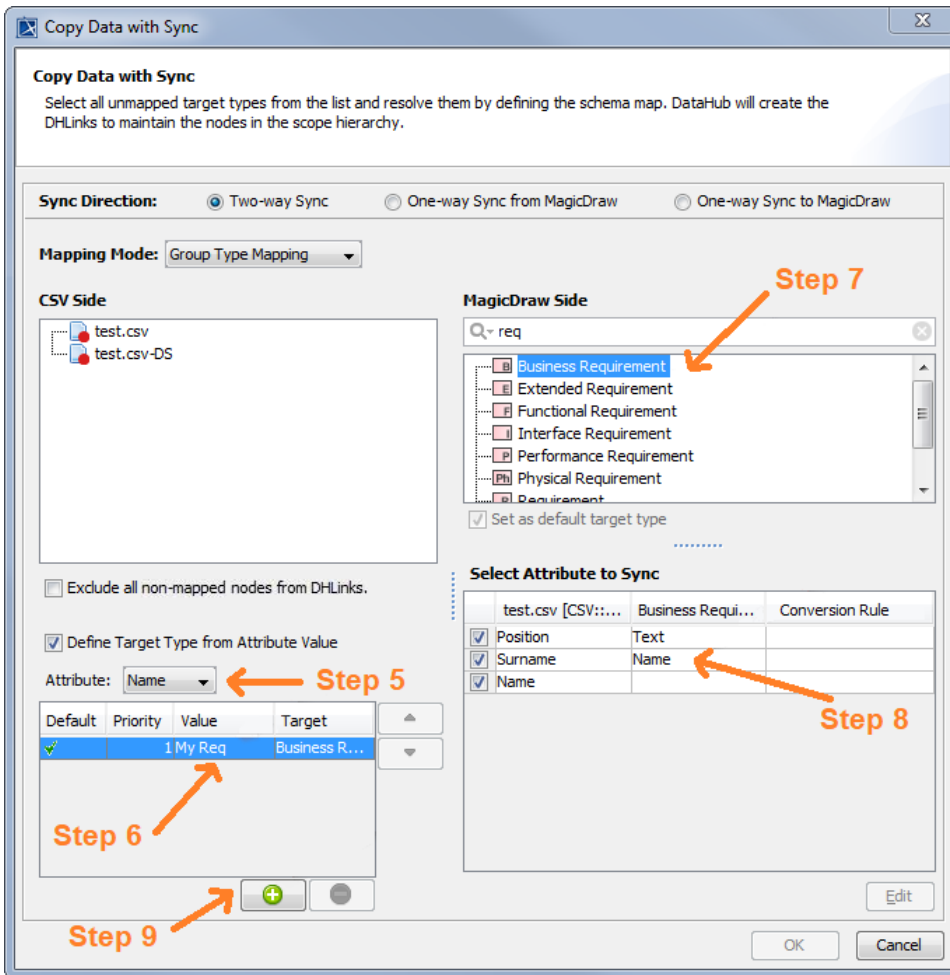
#### Information

If the attribute is **Enumeration**, you can select a value from the **Value** drop-down list for each attribute.

7. From the table, select a value to define a target node type for that value.
8. Continue mapping.
9. If you have a simple data type, you can type any expected value in the **Value** box for mapping.



- If the attribute is a simple data type, you can type any expected value in the **Value** box.



10. Repeat **Step 5** to **9** to map each attribute value.

11. When you finish mapping each attribute value, click **OK** to start copying.



#### Note

- The functionality to map between **Attribute value** and **Target type** is available only in **Group Type Mapping**.

#### Related page

- At least 2 values must be identified for mapping.
- You can edit or deactivate the mapping in the [Schema Map Manager](#) dialog.
- [Mapping with Schema Map Manager](#)