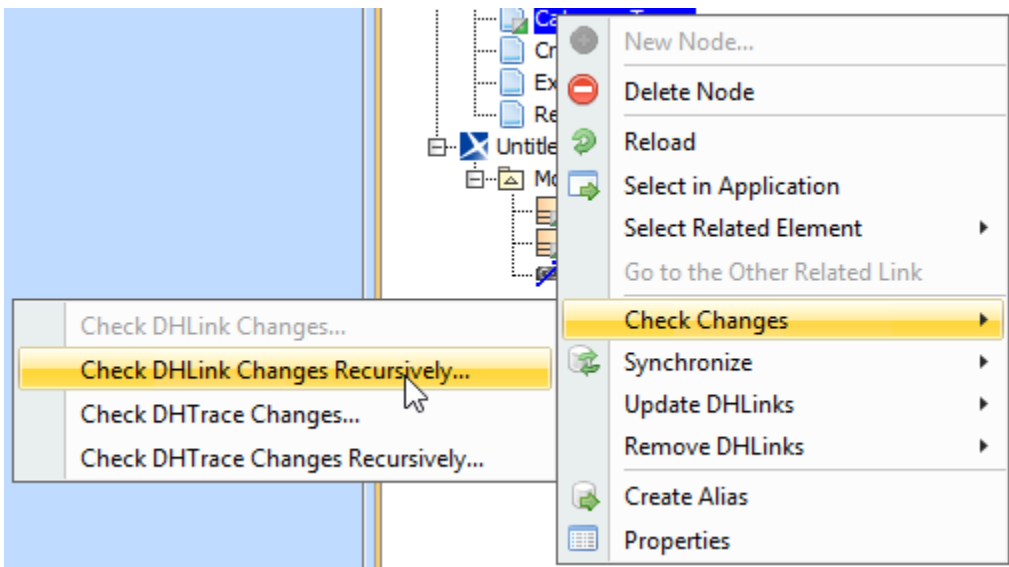


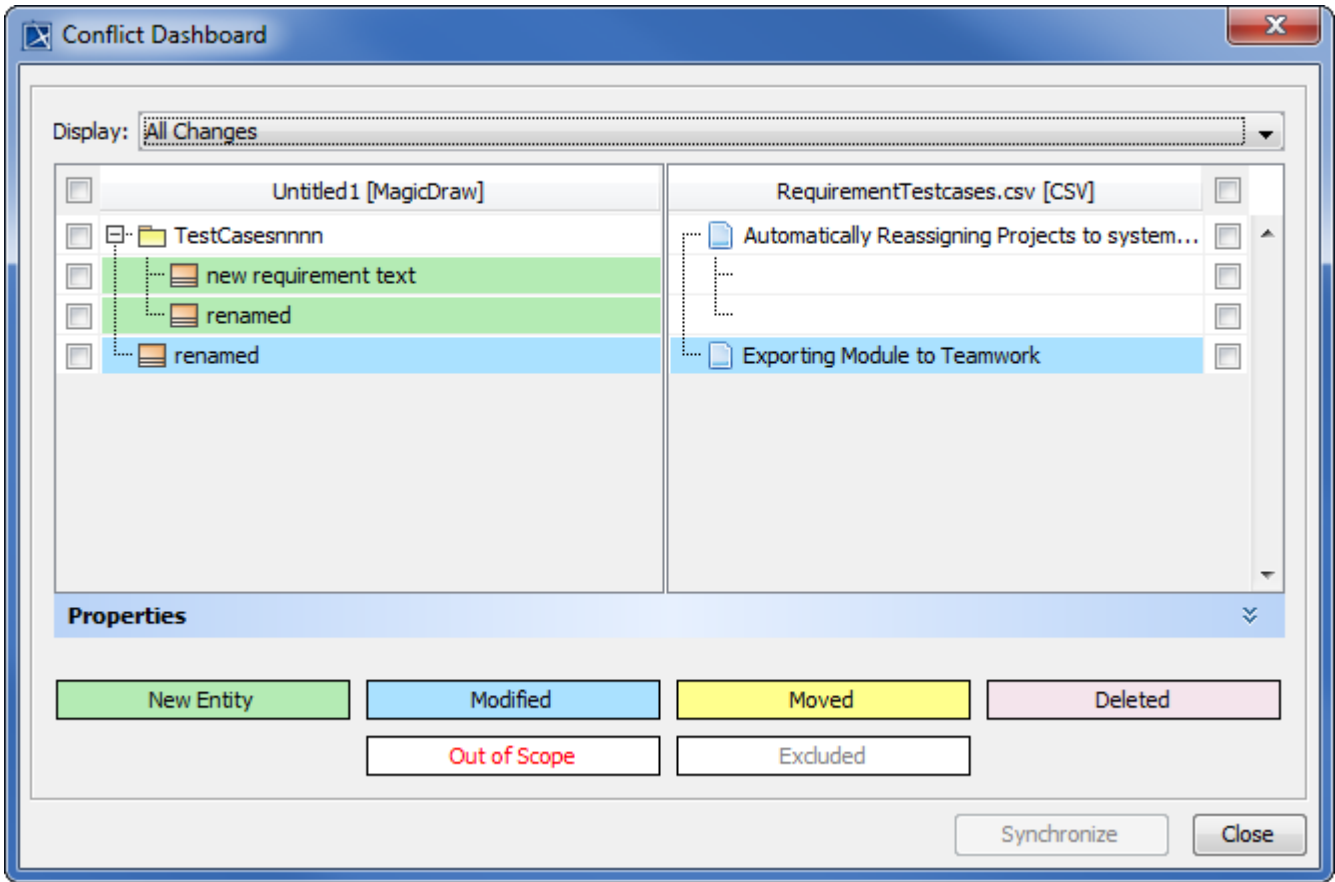
Tracking DataHub data changes

As you copy data from various Data Sources, a few scenarios may arise because the data is present in two locations. A user may choose to delete a node, edit it, move it to another location, or even add a new node. Therefore, it is important to see changes in the data. You can right-click a Data Source node in **DataHub Explorer** and select **Check DHLink Changes** or **Check DHLink Changes Recursively** to track DataHub data changes.



Tracking DataHub data changes by using the shortcut menu.

The **Conflict Dashboard** dialog appears with all changes that need to be synchronized.



The Conflict Dashboard dialog.

**Note**

- The **Conflict Dashboard** dialog opens when you perform **Check DHLINK Changes** or **Check DHLINK Changes Recursively** with any Data Sources.
- If more than one Data source is connected, a dialog asking you to choose the Data Source prior to synchronizing will appear.

The color scheme is for differentiating between different types of node changes. The following table explains the meaning of each of the colors in the **Conflict Dashboard** dialog.

Color	Meaning
Green	New Entity
Blue	Modified Entity
Yellow	Moved node
Pink	Deleted node
Gray	Excluded node
Red	Out-of-Scope node

The **Conflict Dashboard** dialog allows you to resolve node changes by either synchronizing a node from the source to the target or from the target to the source.

To synchronize any nodes in the **Conflict Dashboard** dialog

1. Select any check boxes of Data Sources on either of the sides. The selected side will be the master Data Source, and the other side will pick up the changes from the selected side.

**Note**

A single node can be only synchronized from either the source to the target or the target to the source. However, multiple nodes can have different synchronization directions, e.g., one node can be synchronized from the source to the target, and another node can be synchronized from the target to the source.

2. Click **Synchronize**.