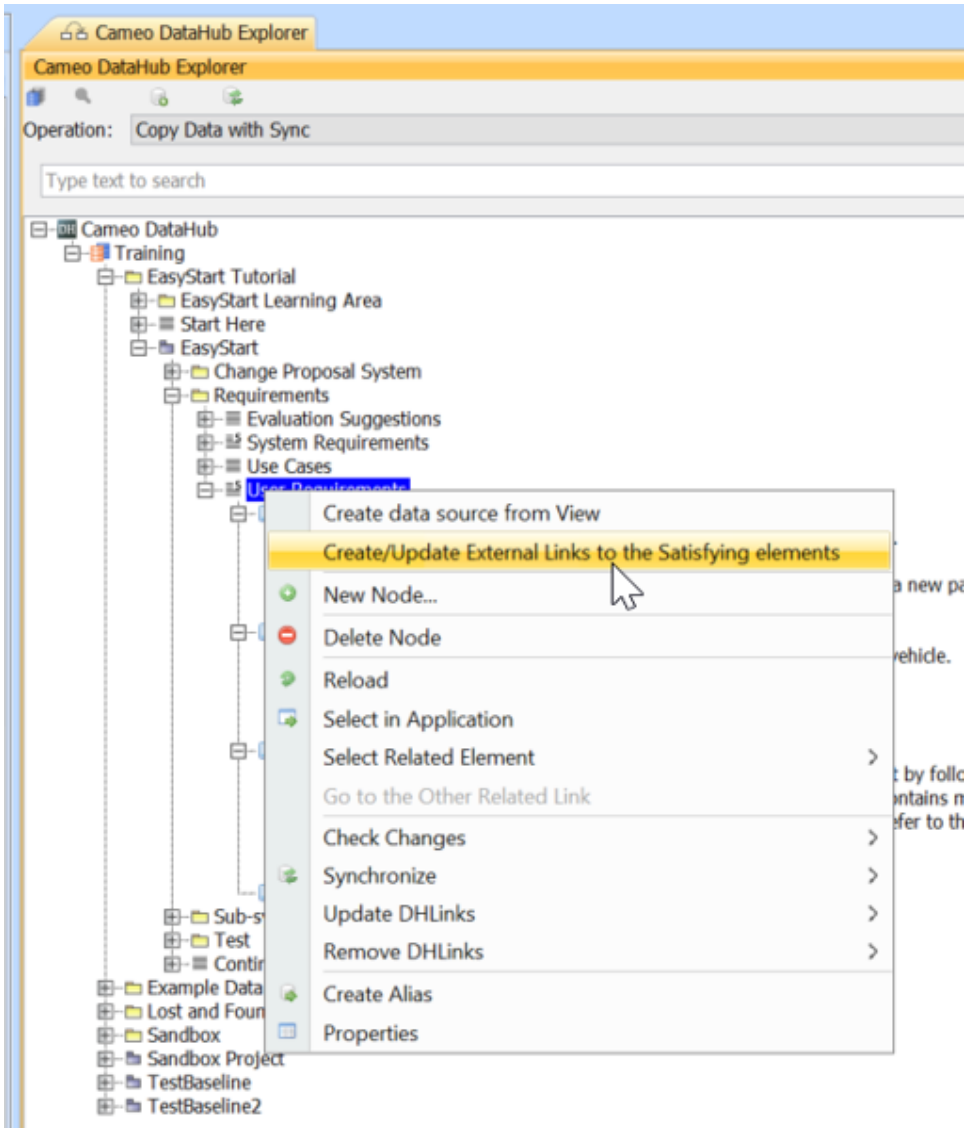


# Synchronizing DOORS External Link

To synchronize a related element in the model with Requirements in DOORS as an External Link

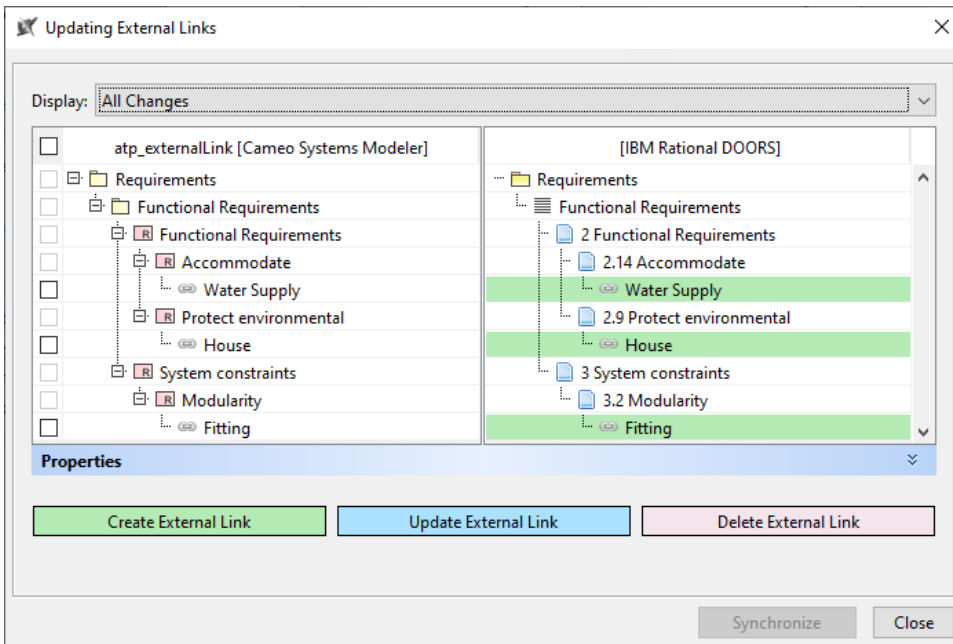
1. Right-click the module or parent node of Requirements and select **Create/Update External Links to the Satisfying elements**. The External Link will be created in the Requirements that contain Relationships in DOORS.



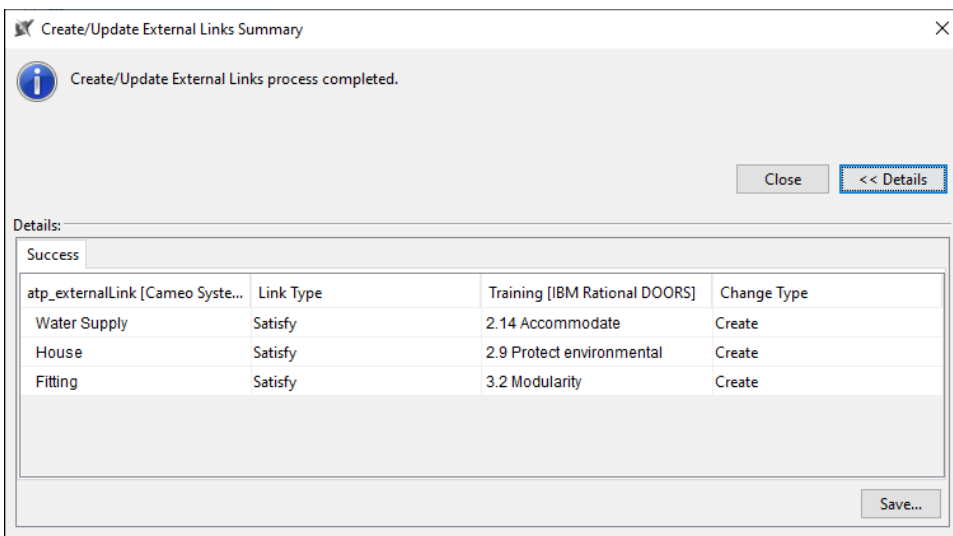
## Note

If you have selected the root node of the Sync Scope, the **Create/Update External Links to the Satisfying elements** operation will recursively detect the changes. Otherwise, only the selected node will be checked.

2. The **Updating External Links** dialog opens to show the synchronizing actions of the selected module or parent node of Requirements. Click **Synchronize** to proceed the actions.



3. The **Create/Update External Links Summary** dialog opens to show the summary of External Links that have been created or updated. Click **Close** to complete the External Link synchronization.



#### Note

External Links will be created with or deleted from Requirements in DOORS according to the Relationships in the model.