

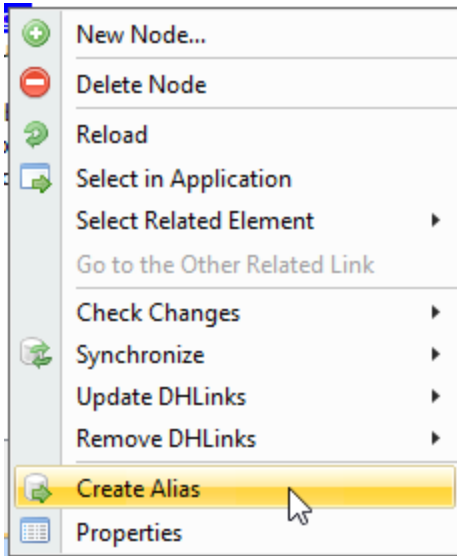
# Working with aliases

One of the features of DataHub allows you to work with aliases. An alias is a reference to a particular node within a particular Data Source or OSLC query result. When you create an alias, a shortcut is created to the content of the node. This shortcut is available in a separate **Alias Explorer** tab to view only that node.

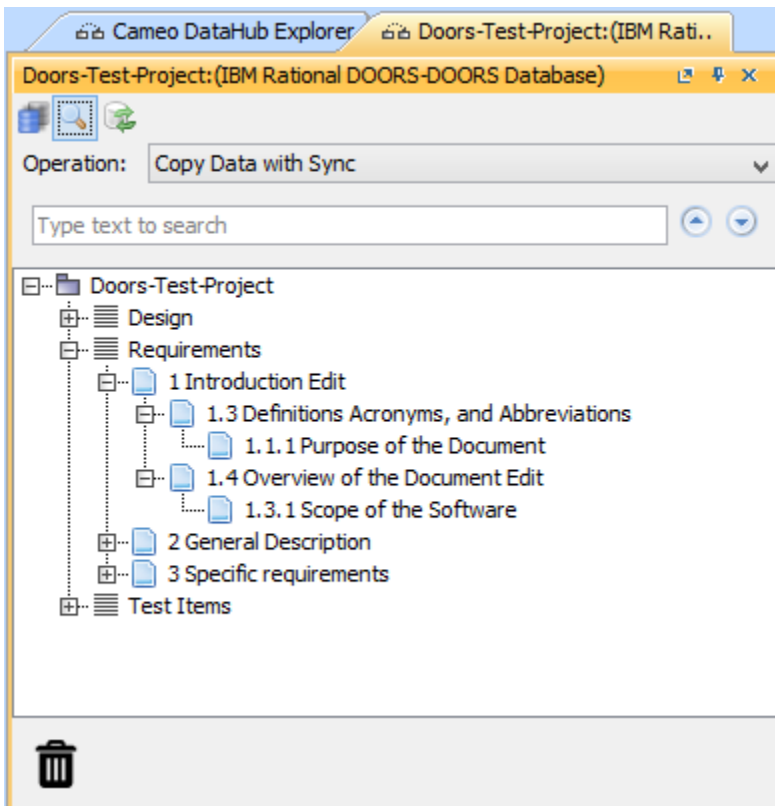
You can create an alias for a Data Source, node, or OSLC query result.

To create an alias

1. Right-click a node or Data Source and select **Create Alias**.



2. An alias will be created for that node and available in a separate **Alias Explorer** tab.



#### Related page

- [Opening Alias Manager](#)