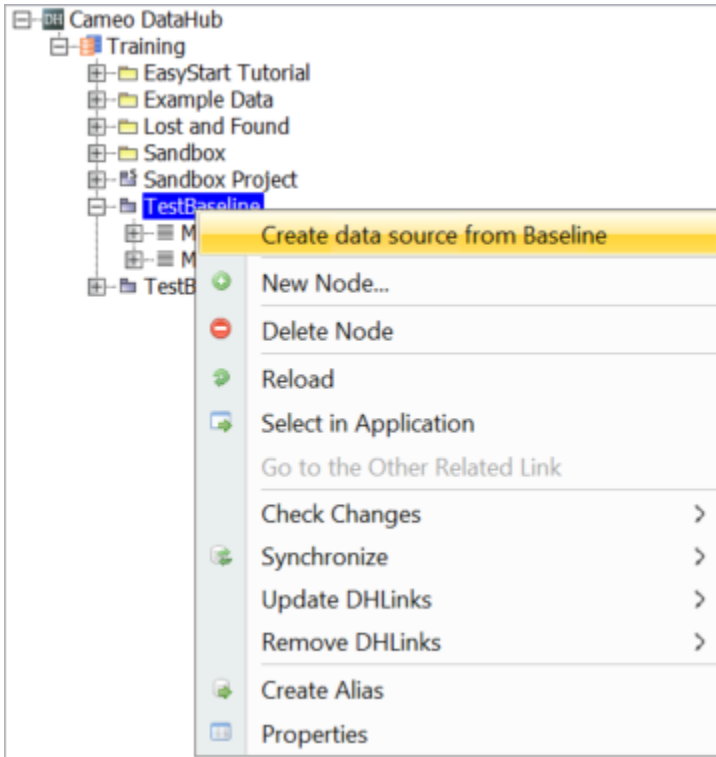


# DOORS Baseline Data Source

You can access DOORS Baseline by adding a new Baseline Data Source.

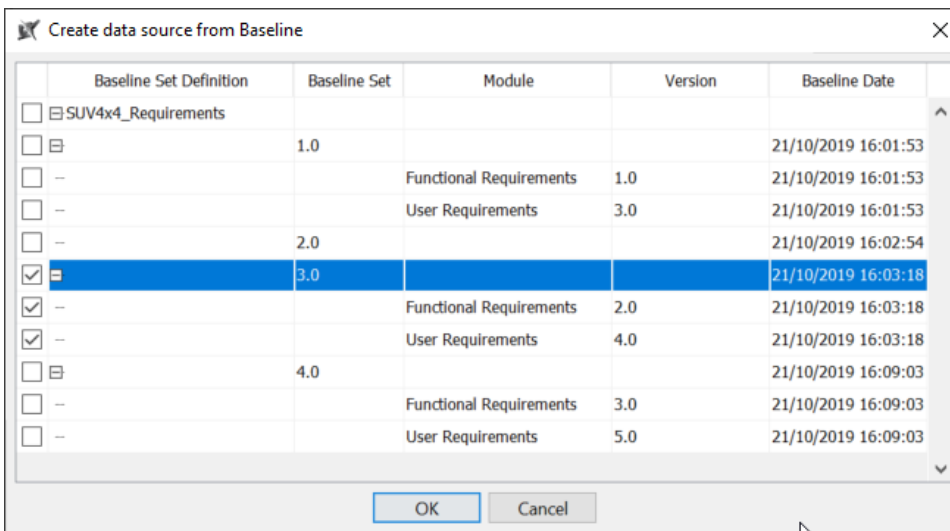
To create the Baseline Data Source

1. Right-click any folder, project, or module you want to create the Baseline Data Source and select **Create data source from Baseline**.

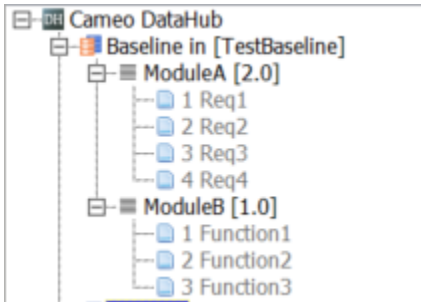


2. The **Create data source from Baseline** dialog opens and lists all Baseline versions grouped by the Baseline set. Do one of the following:

- To create a Data Source with only the selected module, select a particular module version.
- To create a Data Source with all modules in the Baseline set, select a Baseline set version.

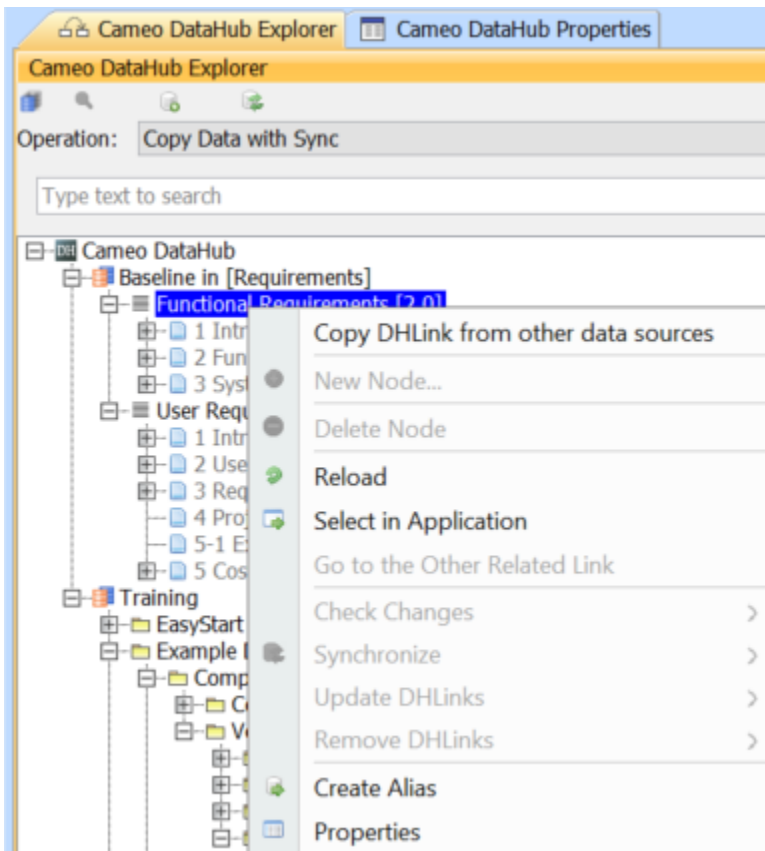


3. Select the Baseline that you want and click **OK**. You will get a new Data Source that contains the modules with the specific version you have selected.

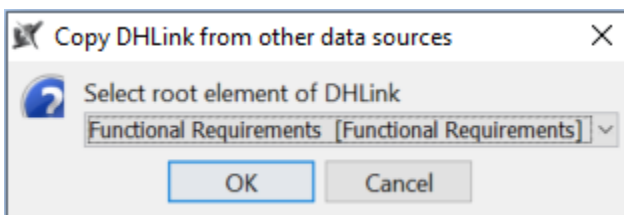


To copy the DHLink to a Baseline Data Source

1. Right-click any module in the Baseline Data Source and select **Copy DHLink from other data sources**.



2. The **Copy DHLink from other data source** dialog opens. From the drop-down list, choose the Data Source you want to copy the DHLink from.



3. Click **OK**. The DHLink will be copied to the new Baseline Data Source.

