

# Deploying the DOORS driver for IBM Rational DOORS

Before adding a DOORS Data Source, you must deploy the DOORS driver.



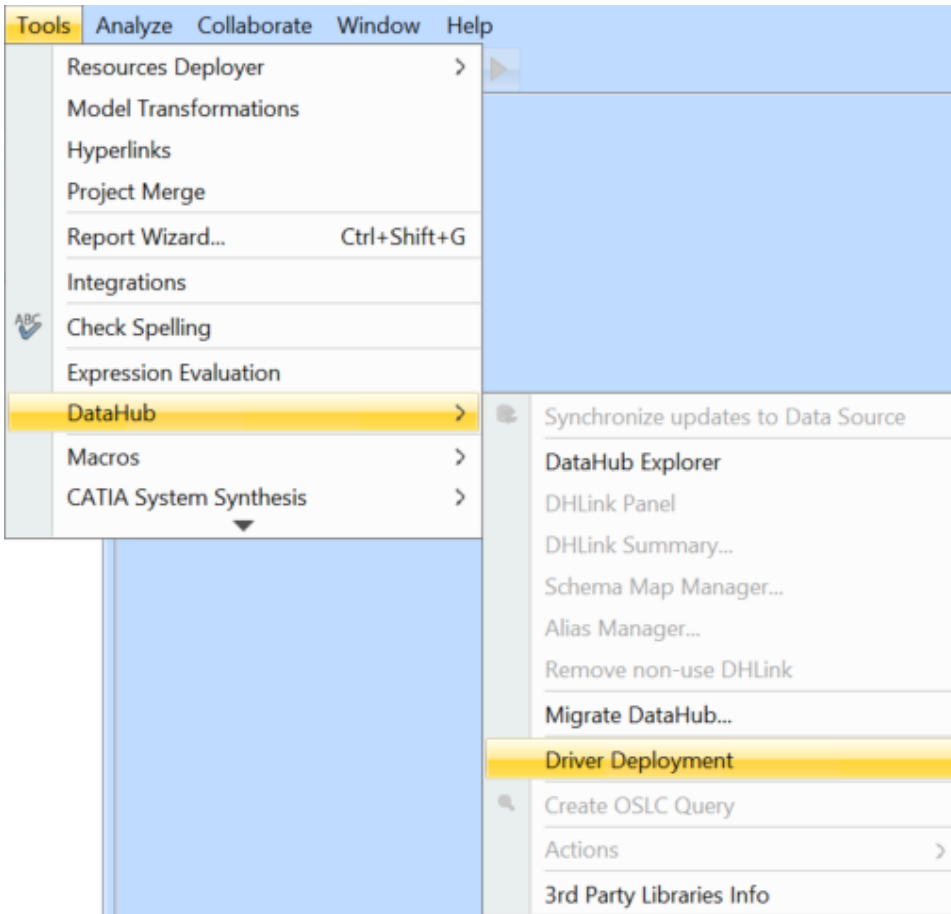
## Note

- Driver deployment copies the DXL script file into the DOORS **addin** folder and updates the registry for DOORS to recognize the **addin** path.

Therefore, you must run MagicDraw or Cameo products as an administrator to allow these operations during driver deployment.

- You must close the DOORS application before driver deployment since folders are write-protected when the application is active.
- To deploy the DOORS driver

- From the MagicDraw® main menu, click **Tools > DataHub > Driver Deployment**. The **Driver Deployment** dialog opens.



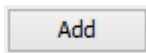
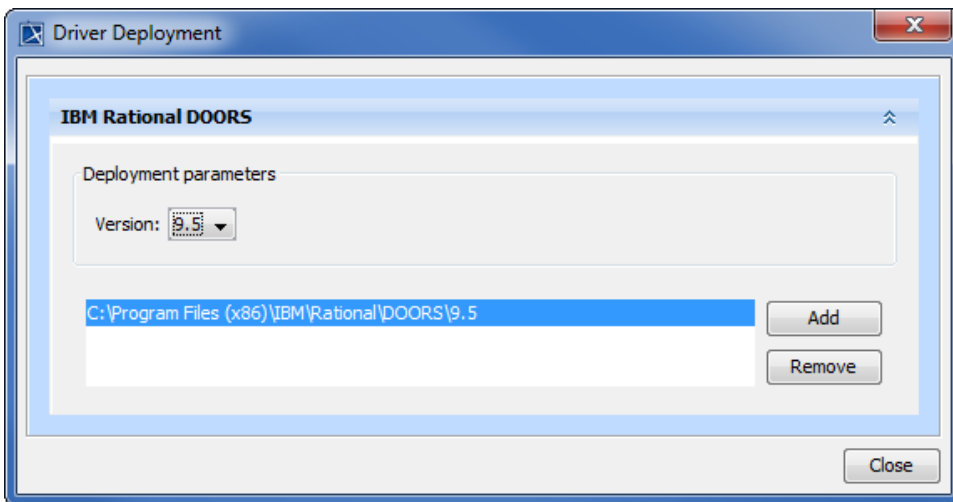
- From the **Version** drop-down list, choose a version of IBM® Rational® DOORS® that you would like to add.



## Warning

It is important to choose the DOORS version before you click

Add



3. Click **Add**. An **Open** dialog appears which prompts you to choose your DOORS installation directory. Locate it and then click **Open**. The DOORS driver is now deployed, and you can now add a DOORS Data Source.

#### Related page

- [Driver deployment](#)