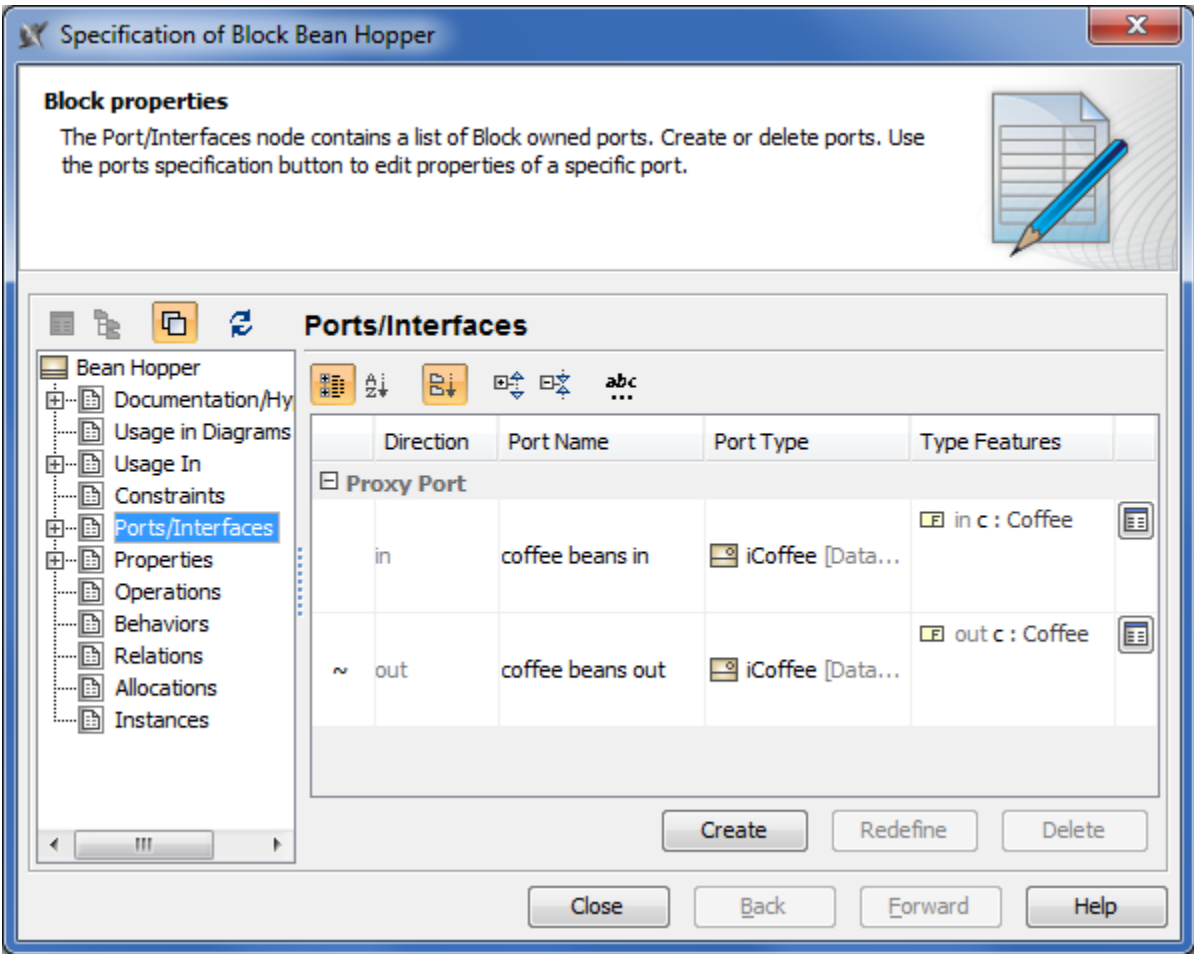


Managing Block Interfaces

All owned and inherited ports and their [interfaces](#) of the selected [Block](#) are collected on the left of the Block [Specification window](#) > **Ports/Interfaces**. Manage them by creating, redefining or deleting.



Column name	Description
Direction	Direction prefix of the port. The tilde symbol (~) appears before the direction prefix when the port is conjugated. How to conjugate port >>
Port Name	Name of the port.
Port Type	Type of the port.
Type Features	Features of the port type.

Button name	Description
	Opens the Specification window of the selected port.
Create	Opens the list with the available to create properties. Click to create the Connector Property , Part Property , Reference Property , Value Property , Constraint Property , Flow Property .
Redefine	Duplicates the selected item and marks its name in ascending order.
Delete	Removes the selected item from the list.