

Steps of the Automatic Instantiation wizard

On this page

- [Introduction](#)
- [Opening the Automatic Instantiation wizard](#)
- [The Automatic Instantiation wizard steps](#)

Introduction

This page describes each step of the **Automatic Instantiation** wizard in detail. If you are satisfied with the default values provided in the **Automatic Instantiation** wizard, you can finish the wizard in the first step without making any changes. The instances will be created with the default values and in your working package. If you want to change the default values of a single instance or create multiple sets of instances, follow all steps of the **Automatic Instantiation** wizard. You can add each set in a different package, as well as display them on the newly created diagrams.



After finishing the wizard, you can create a very large number of instance specifications, depending on the size of your system. That is why we strongly recommend selecting a new package to store all created instance specifications.

Opening the Automatic Instantiation wizard

To open the **Automatic Instantiation** wizard

1. Select the Block for which you want to create instances.
2. From the shortcut menu, select **Tools > Create Instance**.
The **Automatic Instantiation** wizard opens.

The Automatic Instantiation wizard steps

The **Automatic Instantiation** wizard consists of three steps:

- [Step #1. Select parts](#)
- [Step #2. Select a package](#)
- [Step #3. Create a diagram \(Optional\)](#)

Step #1. Select parts

In this step, you can see all the available instance specification values (parts) of your selected element. At this point, you can select which parts or properties to instantiate, create or select values for parts and properties, as well as add or remove parallel parts.

Parts are displayed if the multiplicity is greater than 1. The number of parts displayed depends on the multiplicity.

- The number of parts displayed will equal the multiplicity. For example, if the multiplicity is 2, you will see 2 parts displayed in the **Automatic Instantiation** wizard. Also in this case, you will not be able to add parallel parts or remove existing parallel parts.
- If the multiplicity is defined as an interval (for example, 0..*, 1..10, 1..*) or *, only one part will be created by default. If you need more parts, you can create them by pressing **Insert** or selecting **Add parallel part** from the selected property's shortcut menu.
- If the multiplicity is 1, parts will not be created.

The parts and properties are displayed with the suggested types and values. In this step of the wizard, you can change them. How to select or create a value for the instantiated property, follow the procedures below.

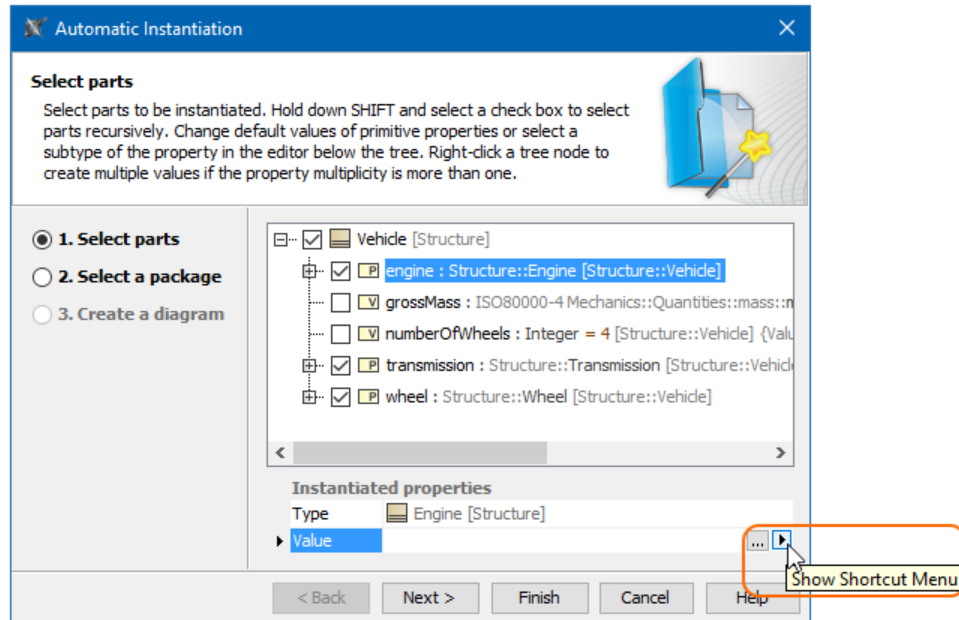
Selecting a value for a part

To select a value for a part

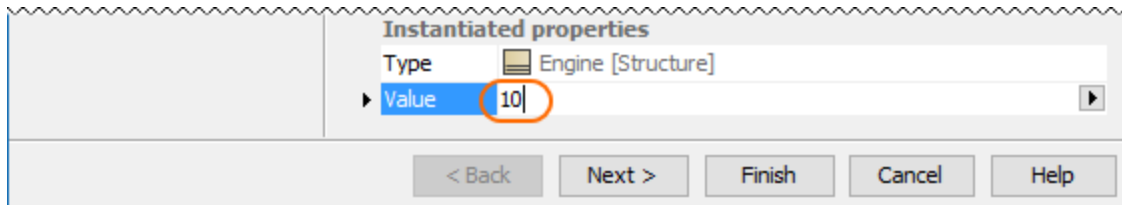
1. Select a part to which you want to add a value.
2. In **Instantiated properties**, click a **Value** specification cell and then click the ... button.
3. The **Select Instance Specification** dialog opens.
4. In the opened dialog, select the instance specification you want to add for the selected part.
5. Click the **OK** button.

To create a value for a part

1. From the element tree, select a part for which you want to create a value.
2. In the **Instantiated properties** area, click the **Value** specification cell and then click the **Show Shortcut Menu** button.

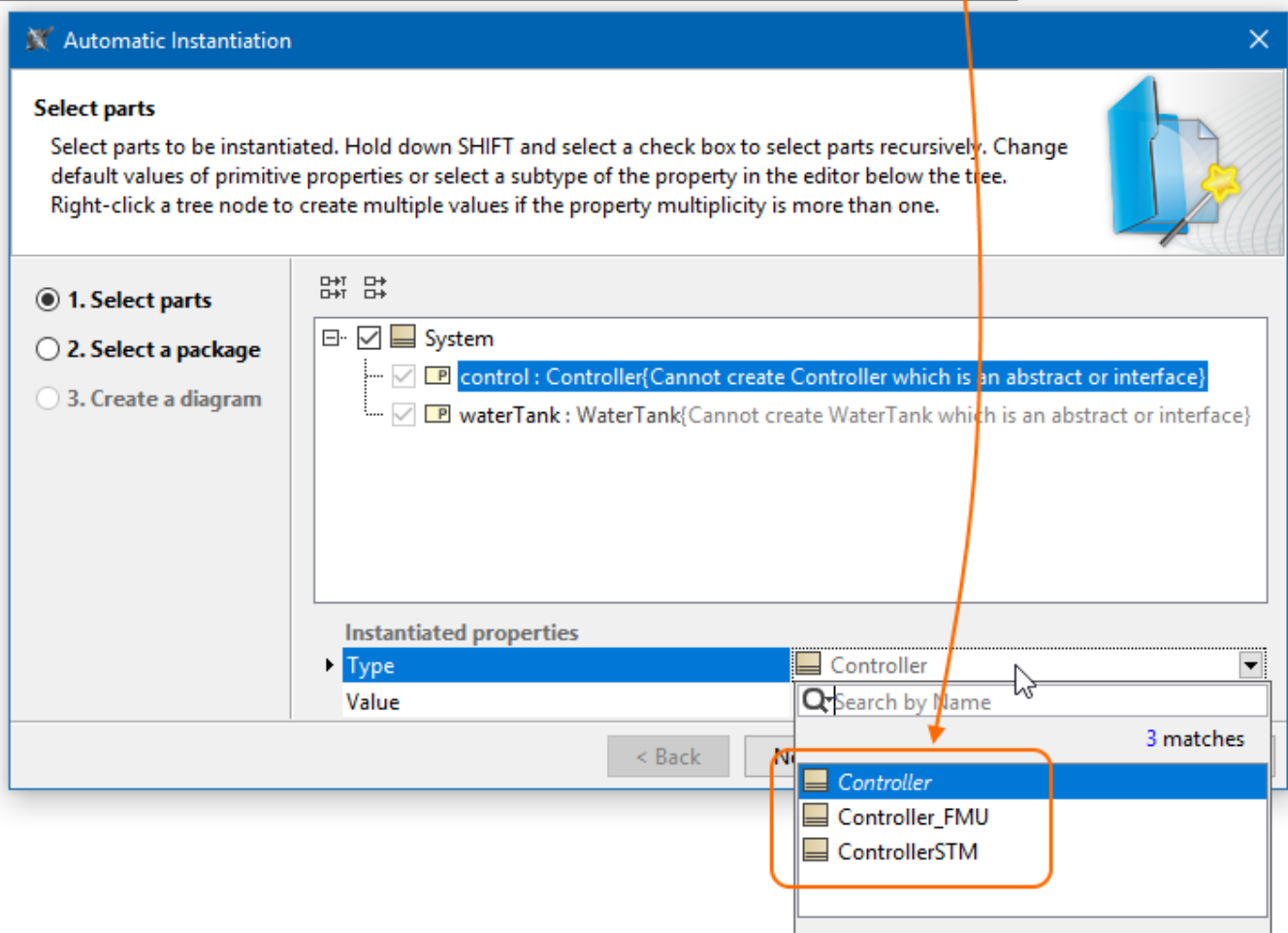
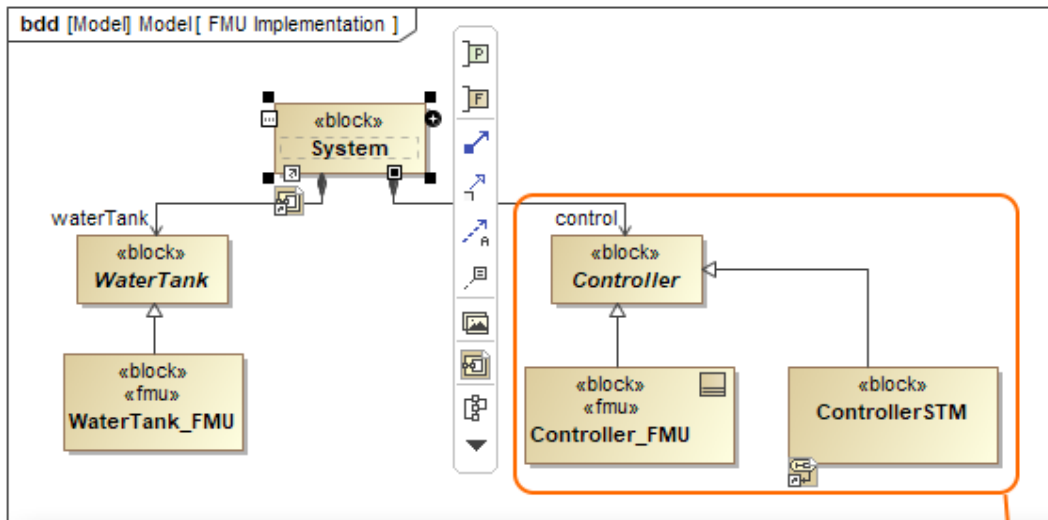


3. In the opened shortcut menu, point to the **Value Specification** and then select one of the available value types.
4. In the **Value** cell, type the desired value (see the following figure).



Changing a type for a part

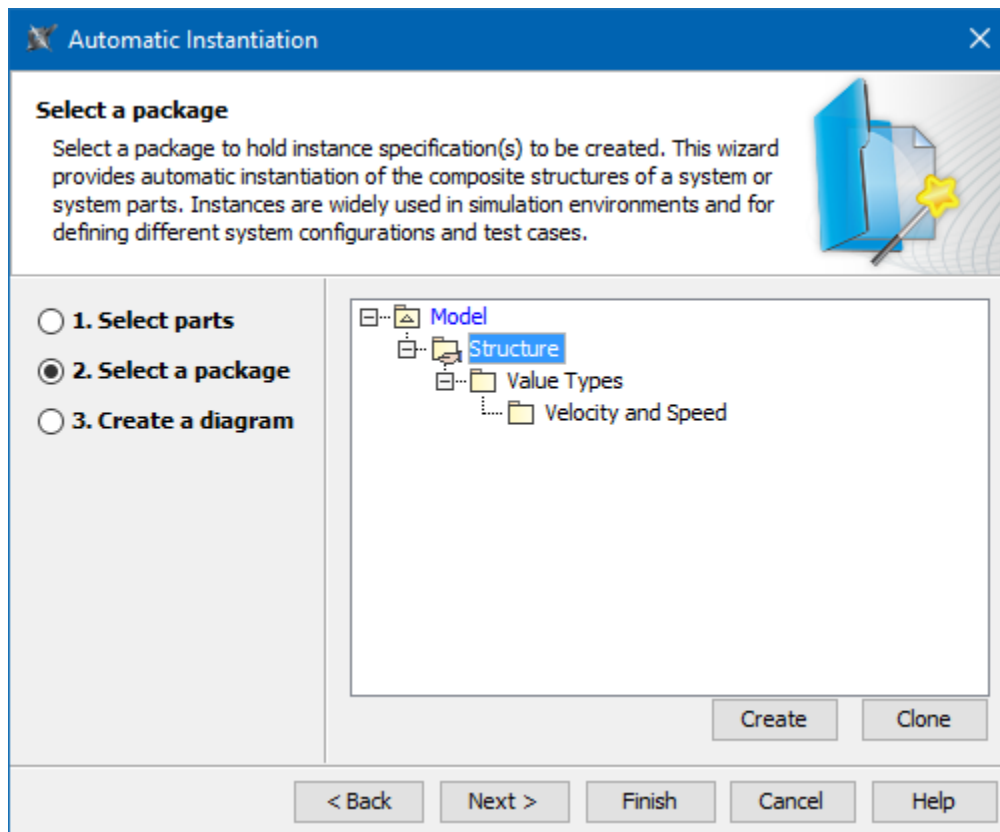
You can change the type for the Part Property only if that type is a subtype of a Block (connected through Generalization). As shown in the following figure, the *Controller_FMU* Block and *ControllerSTM* Block are subtypes of *Controller* Block. When creating an instances for the *System* Block, you can change the type of *control* Part Property by selecting one of the following: *Controller_FMU* Block, *ControllerSTM* Block or *Controller* Block.



Changing the type for Part Property directly in the Automatic Instantiation dialog.

Step #2. Select a package

In this step, you can select the package to store instance specifications. You can select an existing package from the element tree, create a new package, or clone selected packages. Click the **Finish** button after this step if you do not want to display your created instance specifications.



To create a new Package in the element tree

1. In the element tree, select the Package for which you want to create the new one.
2. Click the **Create** button.
3. From the open menu, select the package kind. The Specification window of that package opens.
4. Type its name.
5. Click **Close**.

To clone the Packages in the element tree

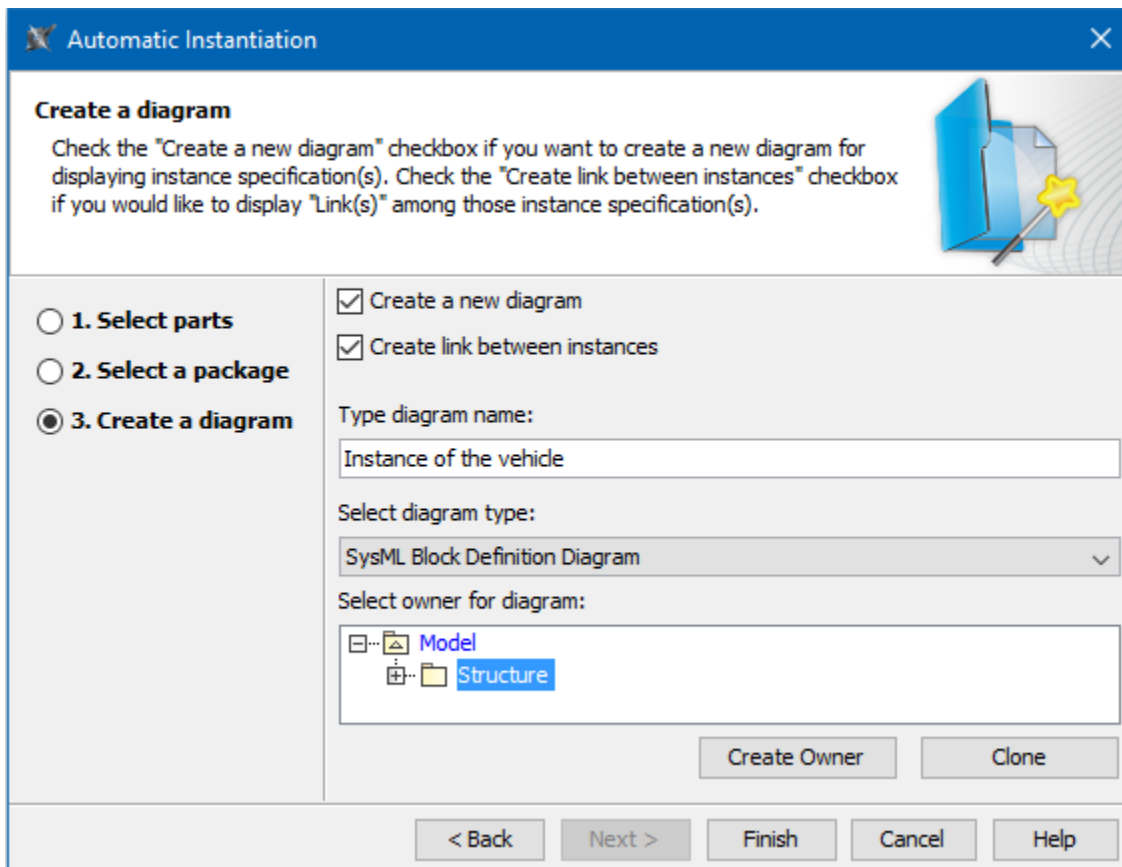
1. In the element tree, select the Package to clone.

 **Note**
The Package is cloned recursively including all nested structures.

2. Click the **Clone** button.
3. The Specification window of cloned Package opens.
4. Type its name.
5. Click **Close**.

Step #3. Create a diagram (Optional)

In this step, you can choose whether or not to show your created instance specifications in a new diagram. If you do not wish to create a new diagram, you can simply skip this step by clearing the **Create a new diagram** check box.



Automatic Instantiation

Create a diagram

Check the "Create a new diagram" checkbox if you want to create a new diagram for displaying instance specification(s). Check the "Create link between instances" checkbox if you would like to display "Link(s)" among those instance specification(s).

☐ 1. Select parts
☐ 2. Select a package
☒ 3. Create a diagram

☒ Create a new diagram
☒ Create link between instances

Type diagram name:
 Instance of the vehicle

Select diagram type:
 SysML Block Definition Diagram

Select owner for diagram:

- Model
 - Structure

Create Owner Clone

< Back Next > Finish Cancel Help

To display instance specifications in the new diagram

1. Make sure the **Create a new diagram** check box is selected.
2. (optional) If you want to create and display links between your instance specification(s), select the **Create link between instances** check box.
3. Fill in the **Type diagram name** field by typing the diagram name.

Note
 By default the diagram name is selected Package name in the Step 2.

4. From the **Select diagram type** drop-down list, select one of the diagram types.
5. Specify the owner for a new diagram:
 - Select existing Packages from the tree.
 - Click the **Create Owner** button to create new.
 - Click the **Clone** button to clone existing Packages.
6. Click **Finish**.

Example
 As example, how to create instances of Blocks with complex structure, read [Automatic Instantiation wizard](#).

Sample model

The model used in the figures of this page is the **VehicleStructure** sample model. To open this sample, download [VehicleStructure.mdzip](#).