

# Validating project integrity

Some aspects are validated automatically, such as:

- Mount location inconsistencies in used projects
- Required version inconsistencies in used projects

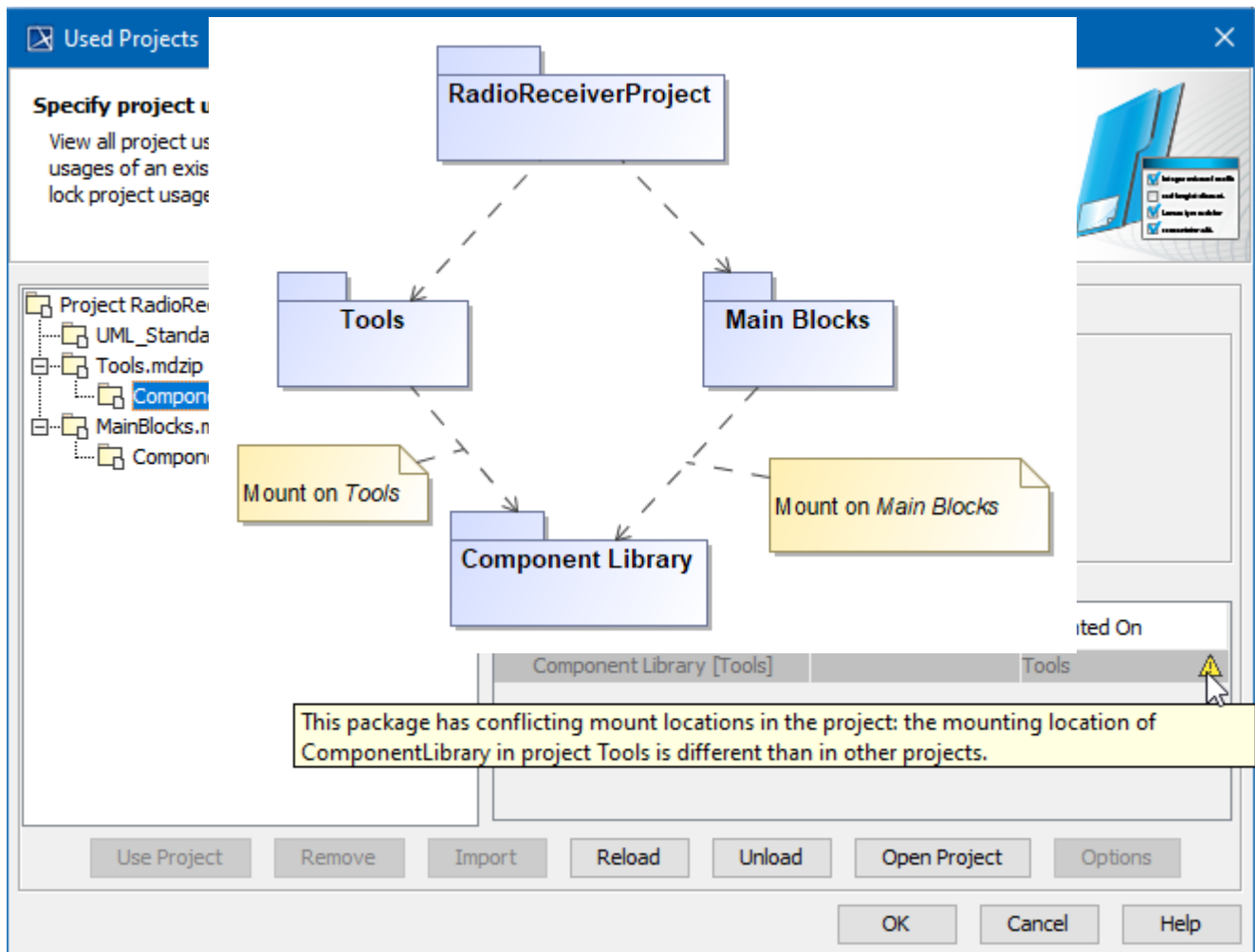
## Mount location inconsistencies in used projects

This occurs when packages of the used project have different mount locations defined in separate projects.

### Example

The used project *Tools* has mounted a package of the used project *ComponentLibrary*, while the used project *MainBlocks* has also mounted the same package *ComponentLibrary*. As shown in the following figure, the mount location conflict occurs because the project *RadioReceiverProject* is using both the *Tools* and *MainBlocks* used projects at the same time.

You can solve the conflict in the [Used Project dialog](#) by unifying the **Mounted On** value in both projects.



Example of conflicting mount locations warning displayed in Used Project dialog.

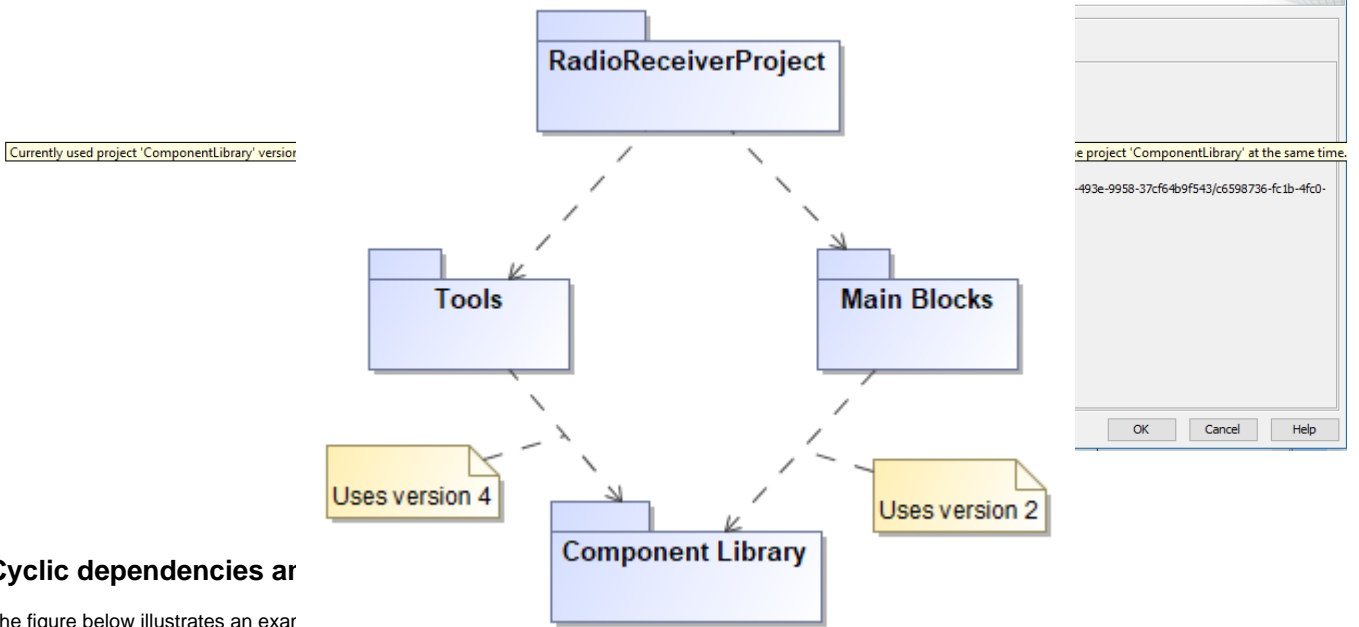
## Required version inconsistencies in used projects

This occurs when a project directly and indirectly uses several different versions of the same used project at the same time.

### Example

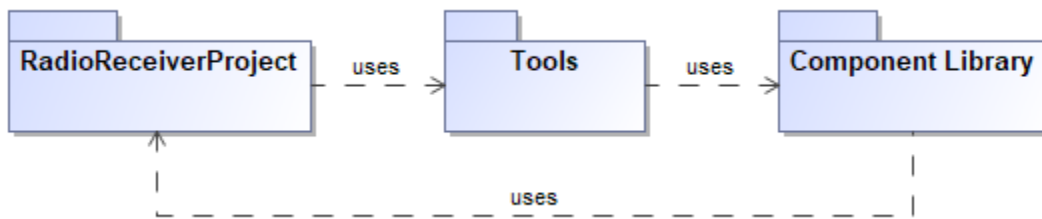
You can solve the conflict in the [Used Project dialog](#) by unifying the required versions in both projects.

The used project *Tools* is using the 4th version of the used project *ComponentLibrary* and the used project *MainBlocks* is using the 2nd version of the used project *ComponentLibrary*. In the project *RadioReceiverProject*, a used project *ComponentLibrary* version conflict occurs as two different versions of this project are required at the same time (see the following figure).



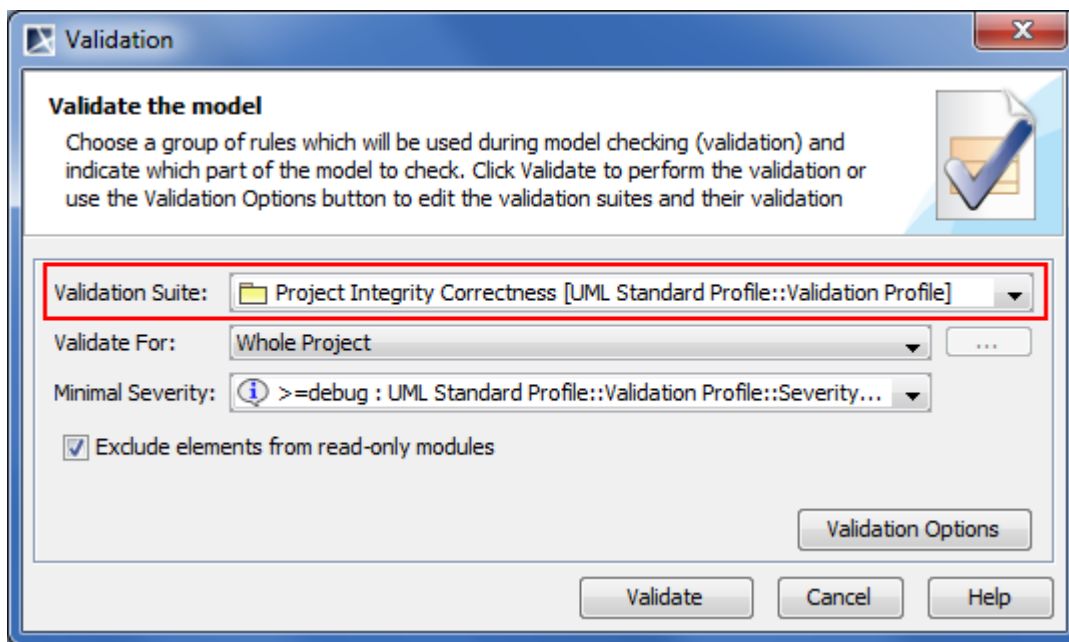
## Cyclic dependencies ar

The figure below illustrates an exar



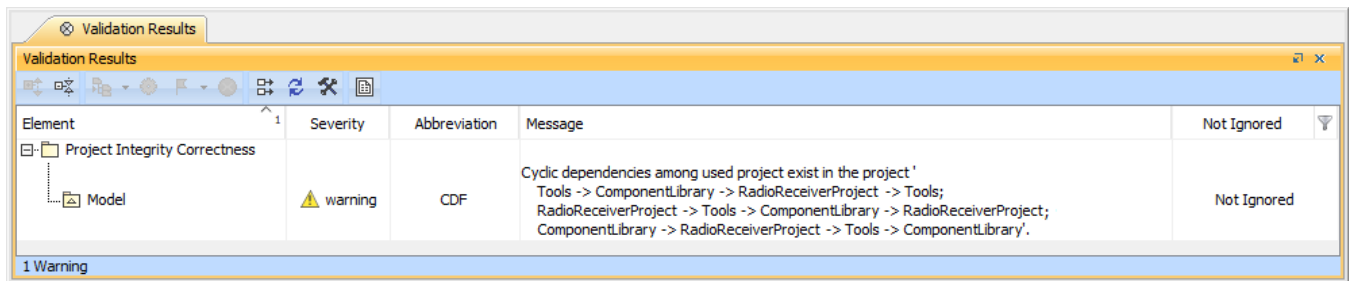
Example of cyclic dependency.

The Project Integrity Correctness suite includes the rules for **detecting** Cyclic dependencies among used projects. While **validating** the model, use the **Project Integrity Correctness** validation suite to find cyclic dependency issues in your project composition.



Project Integrity Correctness suite

Violations of your project integrity will be displayed in the [Validation Results](#) panel.



Example of violations detected while checking project integrity correctness

You can resolve the cyclic dependency issues in the [Used Project](#) dialog or you can use the [Resource Usage Map](#).

#### Related pages

- [Validation](#)
- [Validation Results Panel](#)
- [Managing Used Projects](#)