

# Creating a new project

All project information is stored in a single file that has the same name as the project itself.

A newly created project consists of the following packages:

- The empty root package *Model*, storing all model elements.
- *File View* package, containing components that are created during code engineering and representing source files. Adding a resident element to a particular component causes that element to be generated within the source file.
- *UML Standard Profile*, containing stereotypes that are necessary in order to work with MagicDraw, primitive data types and constraints (which are UML standard), and UML 2 metamodel elements. The following data types are specified in MagicDraw: boolean, byte, char, date, double, float, int, Integer, real long, short, void, and string.

You can create your own packages for keeping model elements as well. By default, packages cannot be deleted or renamed in a project (except for the *File View* package).

To start a new project, first you must create a new workspace for it. You can select a project type from the following domains:

- **General-Purpose Modeling** (UML, Use Case, Guide to UML Diagrams projects)
- **System Engineering** (SySML project)
- **Enterprise Modeling** (DoDAF, DoDAF 2.0, MODAF projects)
- **Software Engineering** (Scrum project, Project from Existing Source Code)
- **Business Process Modeling** (BPMN 2.0 project)
- **Service-Oriented Modeling** (Cameo SOA+ project)
- **Other** (Project from Template, Process Guide project)

Upon creation of a new project, the **General-Purpose Modeling** domain opens by default.

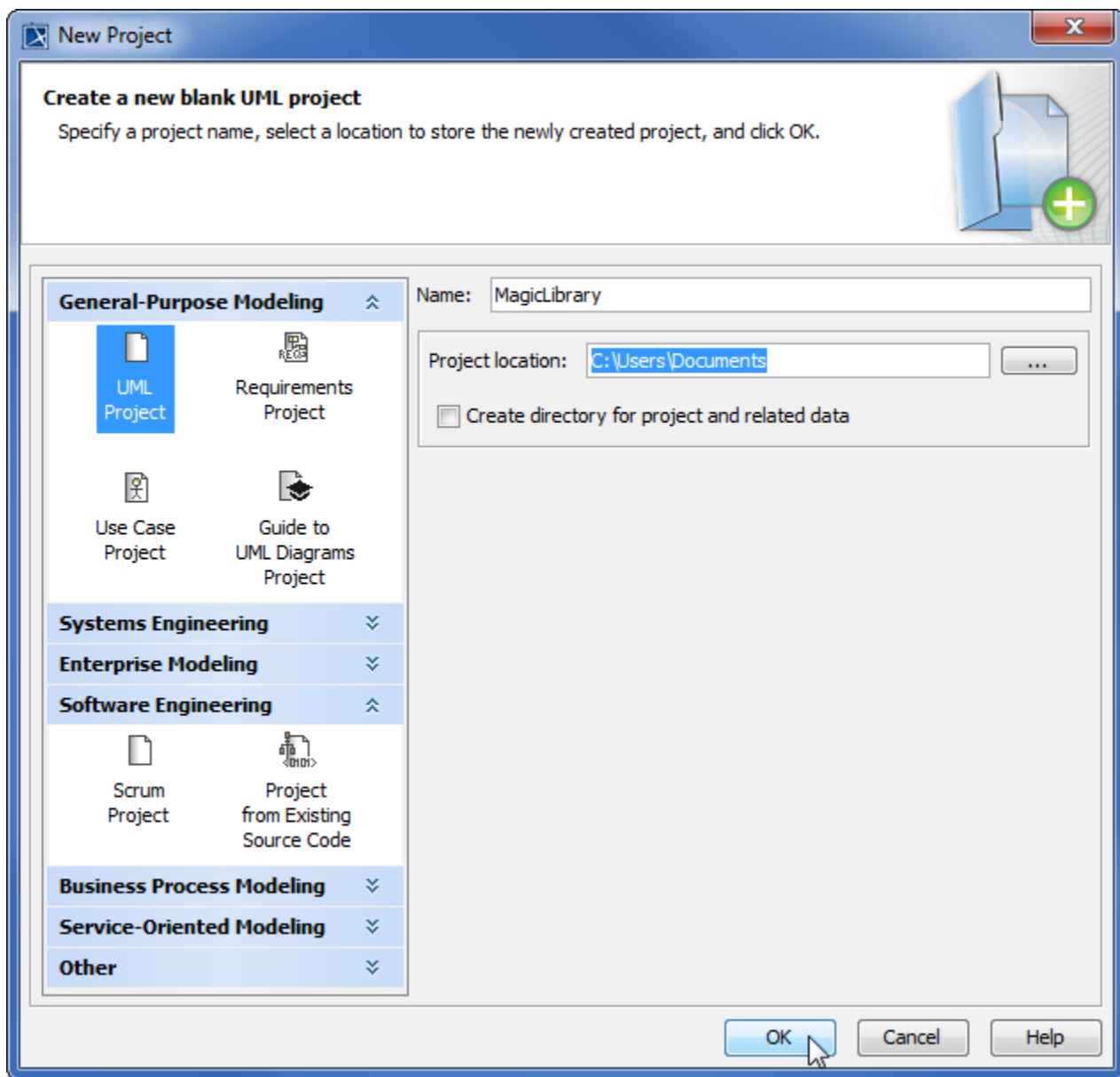
To create a new workspace for a blank project

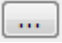
---

1. Do one of the following:

- From the **File** menu, select **New Project**.
- On the main toolbar, click the **New Project** button.
- Press Ctrl + Shift + N.

Any of the above actions opens the **New Project** dialog.



2. Select the **UML Project** in the **General-Purpose Modeling** domain.
3. Specify the file name in the **Name** box.
4. Click the  button to select the location to store the created project.
5. Click **OK**.

#### Related pages

- [Creating projects](#)
- [Project Properties dialog](#)
- [Working with multiple projects](#)