

Creating and managing Legend Items

On this page

- [Creating Legend Items](#)
- [Managing Legend Items](#)

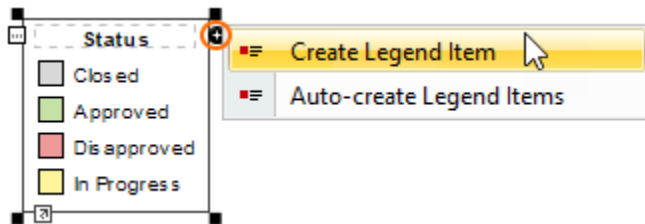
After [creating a Legend](#), you must create and specify its Legend Items. Legend Items define different styles used in a diagram or table in a Legend.

Creating Legend Items

You can create Legend Items directly from a Legend shape or in the Specification window of a Legend. If you are working with a Legend in a symbol diagram, you can use both methods. However, if you are working with a Legend in a table, you can create Legend Items only in the Specification window of the Legend.

To create a Legend Item from a Legend shape


1. In a diagram, select the shape of the Legend for which you want to create a Legend Item.
2. Click the smart manipulator on the top right corner of the Legend shape, highlighted in the figure below, and select **Create Legend Item**.



3. In the [Specification window](#) of the newly created Legend Item, [specify its properties](#).
4. Close the Specification window.

The newly created Legend Item is displayed in the Legend shape and applied to diagram symbols according to the properties you specified in the [Applied To property group](#).

To create a Legend Item in the Specification window of a Legend

1. Open the Specification window of the Legend for which you want to create a Legend Item by doing one of the following:
 - In a symbol diagram, double-click the shape of the desired Legend.
 - In a table, hover the mouse pointer over the desired Legend, click  and select **Specification**.
2. Click the **Legend Items** group on the left side the Specification window.
3. Click the **Create** button.
4. In the open Specification window of the newly created Legend Item, [specify its properties](#).
5. Close the Specification window.

The newly created Legend Item is displayed in the Legend and applied to diagram symbols or table rows according to the properties you specified in [Applied To property group](#).

Alternatively, you can [create Legend items automatically](#).

Managing Legend Items

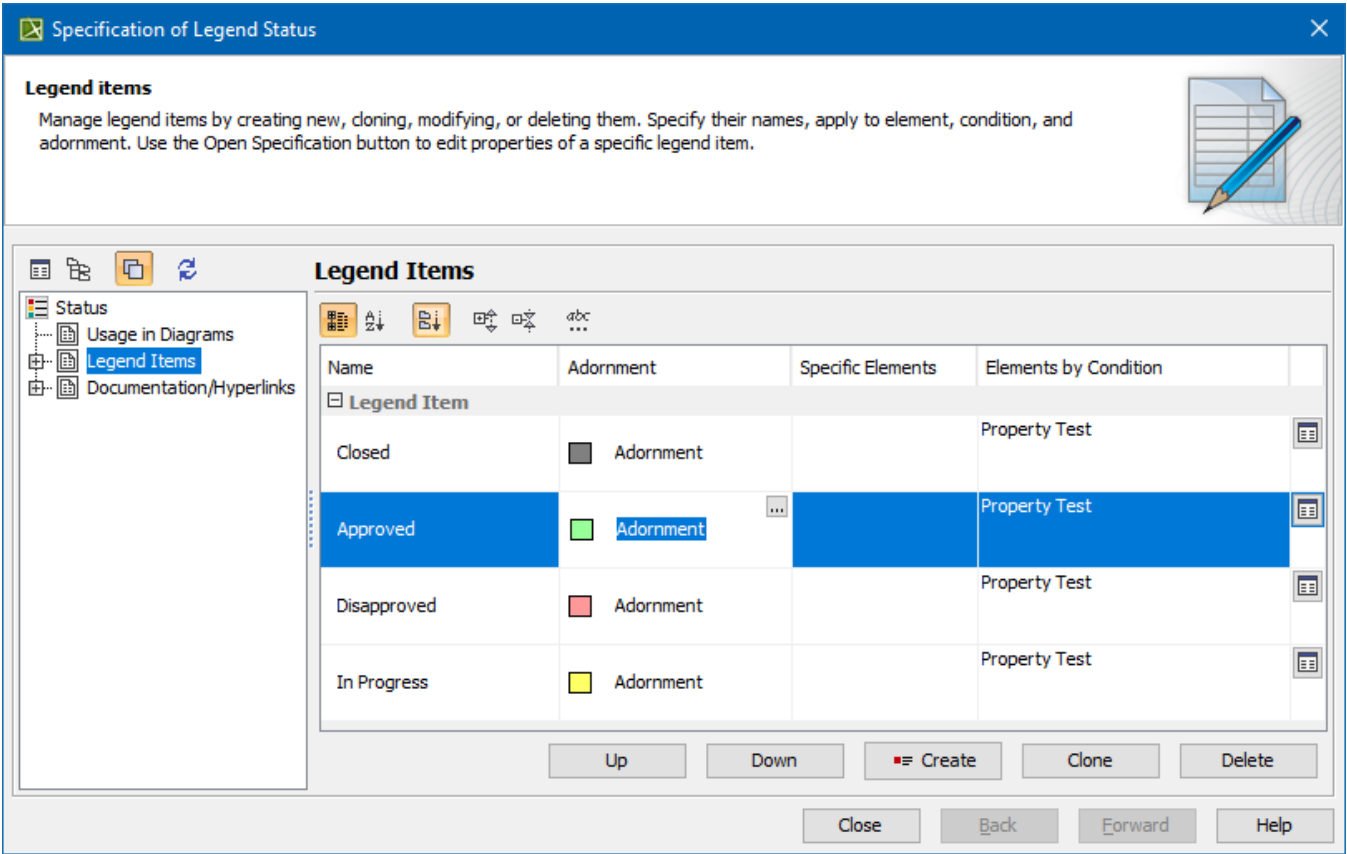
The **Legend Items** group in the Specification window of a Legend allows you to create new Legend Items and modify or reorder the existing ones.

To access the Legend Item management area

1. Open the Specification window of a Legend.
2. Click the **Legend Items** group on the left side the Specification window.

The Legend Item management area is displayed on the right side of the Specification window. The following table explains how to use the buttons found there to create and modify Legend Items.

Button name	Description
Up	Select a Legend Item and click the button to move the Legend Item one position up in the list.
Down	Select a Legend Item and click the button to move the Legend Item one position down in the list.
Create	Click the button to create a Legend Item. The Specification window of the newly created Legend Item opens automatically, allowing you to specify its properties.
Clone	Select a Legend Item and click the button to create its copy. The Specification window of the newly created Legend Item clone opens automatically, allowing you to modify its properties. By default, the clone inherits all property values of the Legend Item from which it was cloned.
Delete	Select a Legend Item and click the button to remove it.



Legend Item management area in the Specification window of a Legend.

 **Alternative method to manage Legend Items**

Related pages

- [Legends](#)
 - [Creating Legends](#)
 - [Creating Legends automatically](#)
 - [Displaying and hiding Legends](#)
 - [Specifying Legend Items](#)