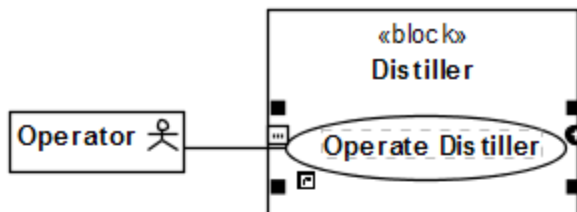


Specifying a Use Case subject

The subject of a Use Case represents a system under consideration to which that Use Case applies. The subject can be any element that may have a behavior, such as a Component or Class (SysML Block).

To specify the Use Case subject

1. Select the Use Case or its shape.
2. Drag it onto a Class, SysML Block, or Component shape. The Use Case becomes nested in that shape, and the appropriate model element is set as the Use Case subject.

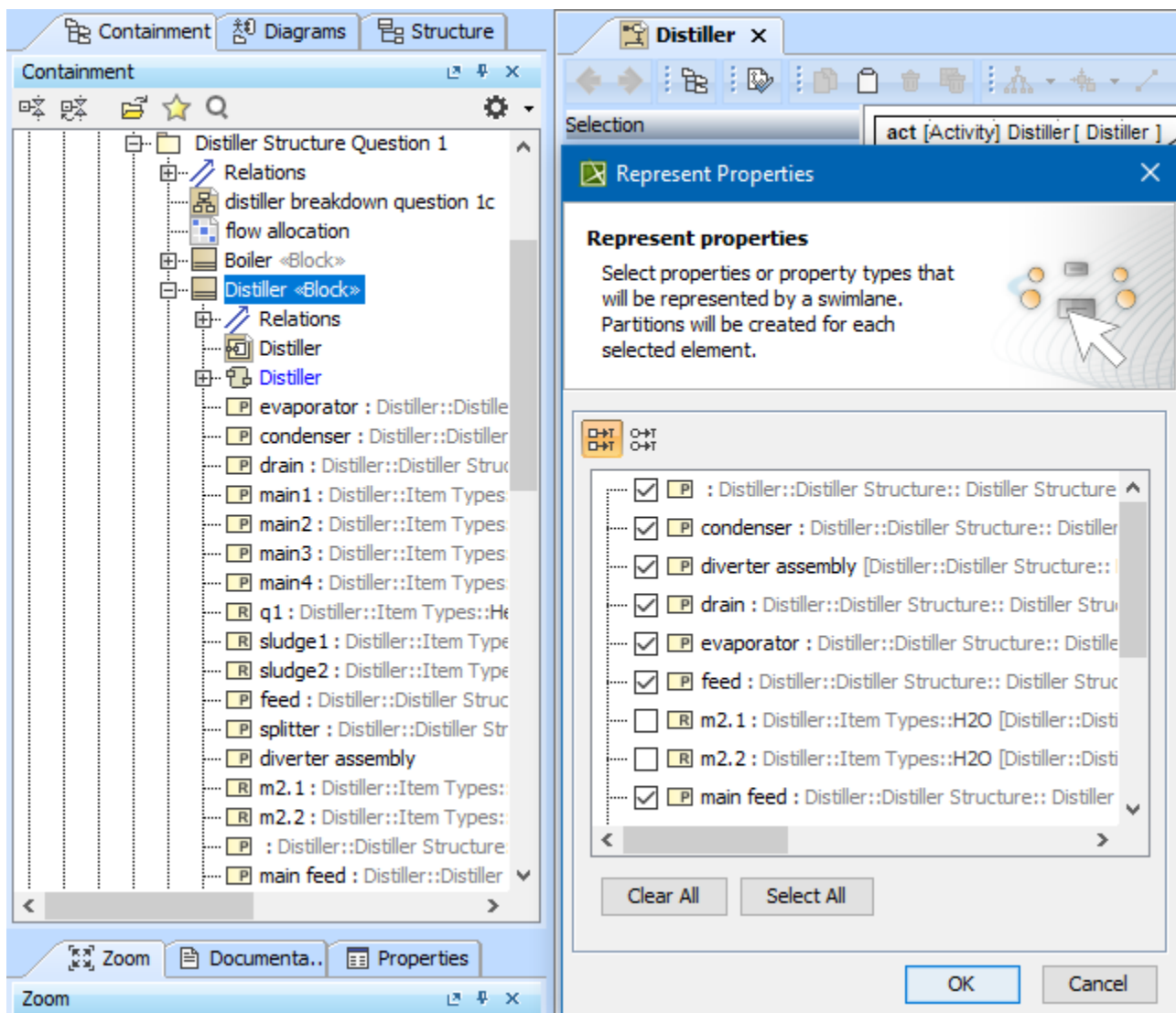


The dialog box is titled "Specification of UseCase Operate Distiller". It contains a section "Specification of UseCase properties" with instructions to specify properties in a table and choose from "Expert" or "All" options. Below this is a tree view on the left with "Operate Distiller" selected. The main area shows a table with "Subject" selected, displaying "Distiller [Distiller::Distiller Structure]". At the bottom are "Close", "Back", "Forward", and "Help" buttons.

Specification of UseCase properties
Specify properties of the selected UseCase in the properties specification table. Choose the Expert or All options from the Properties drop-down list to see more properties.

Operate Distiller
Properties: All
Classifier Behavior
Owned Behavior simple sequence(context Distiller)
Subject Distiller [Distiller::Distiller Structure]
Extend
Include
Subject
The subjects to which this UseCase applies. Each subject or its parts realize all the UseCases that apply to it.
Type here to filter properties
Click the Load Profile button to load the UseCase Description Profile.
The profile extends the Use Case description with additional properties.
Load Profile
Close Back Forward Help

Having a Use Case with the subject specified jumpstarts the creation of Swimlanes in the Activity diagram owned by that Use Case. In this case, you can select the subject properties you wish to be represented by the Swimlanes on that diagram.



Related pages

- [Extension Point](#)
- [Specifying a Use Case subject](#)
- [Use Case description profile](#)
- [Use Case Scenario sketch](#)