

# Working with packages

You can [specify package properties](#) in the package [Specification window](#). In the same window, you can find the description of each property. Descriptions are displayed in the description area of the Specification window.



You can conveniently [import packages](#) to find the elements you're looking for in the type selection list.

## Related Pages

- [Model Elements](#)
- [Specification Window](#)

The procedures below illustrate how to work with packages:

- [Adding inner elements](#)
- [Changing the package header position](#)
- [Showing the list of elements assigned to a package on its shape](#)
- [Displaying inner elements inside package shape](#)

## Adding inner elements

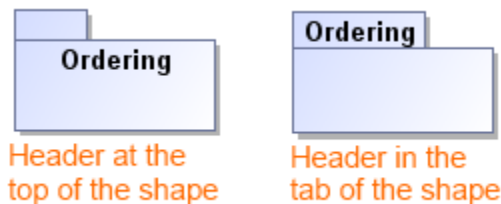
To add inner elements to the selected package

1. In the **Package** Specification window, select the **Inner Elements** property group.
2. Click the **Create** button, and select an element you wish to add. The selected element Specification window will open.
3. Define the properties you need.
4. Click **Back** to return to **Package** Specification window.

## Changing the package header position

To change the package header position

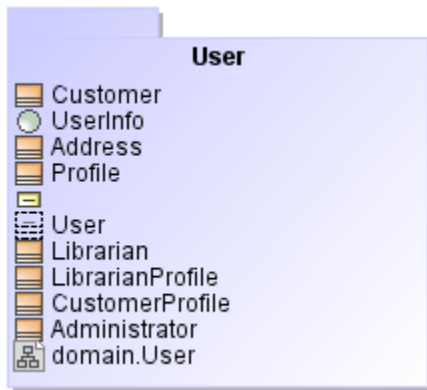
- In the **Symbol Properties** dialog, set the Header Position property to:
  - **Top** to place a package header at the top of a package shape.
  - **In Tab** to place a package header in a package tab.



## Showing the list of elements assigned to a package on its shape


To show the list of elements assigned to a package on the package shape

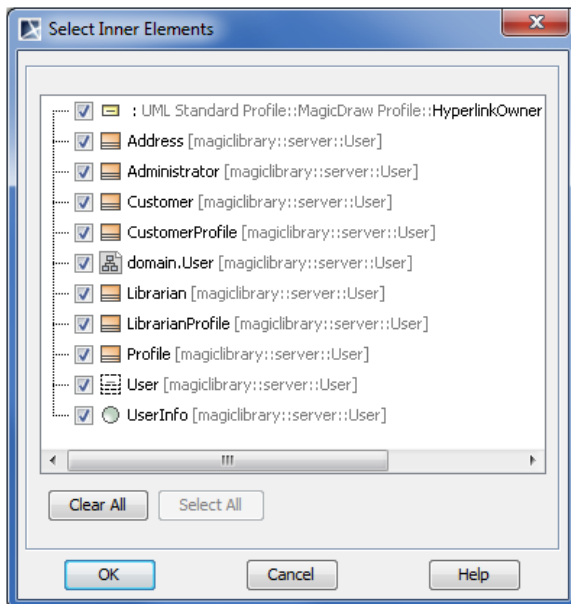
- From the selected package shortcut menu, choose **Show Inner Elements List**.



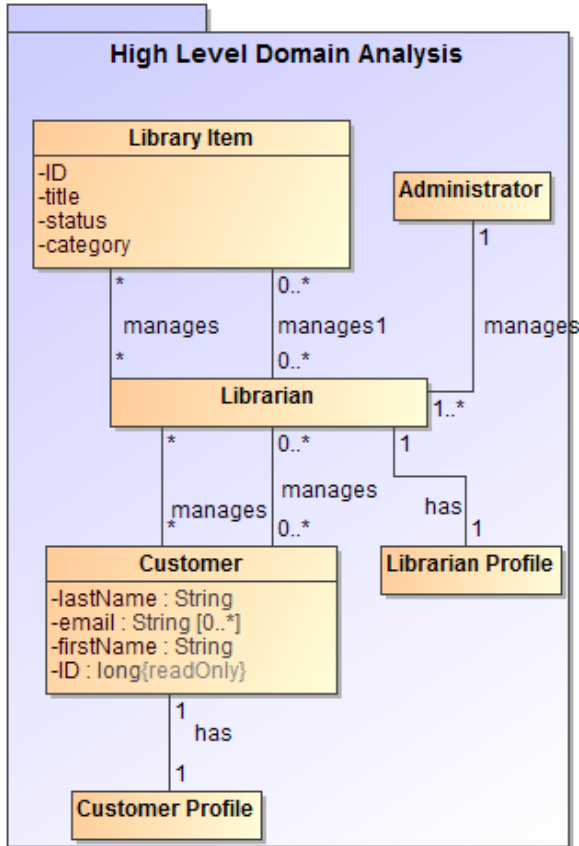
## Displaying inner elements inside package shape


To display the inner elements of a package in a diagram

1. Select a single package shape on the diagram pane.
2. Open the **Select Inner Elements** dialog by doing one of the following:
  - From its shortcut menu, select **Display > Display Inner Elements**.
  - On the diagram toolbar, click  and select **Display Inner Elements**.
3. In the dialog, select the elements that you want to display inside the package shape.



4. Click **OK**.  
The selected elements are displayed on the shape of the selected package.



The rake icon  is displayed on the shape if the package refers to another package diagrams. The rake icon isn't shown by default, therefore, you need to set the **Show Rake Icon** property value to *true* in the **Symbol Properties** dialog.