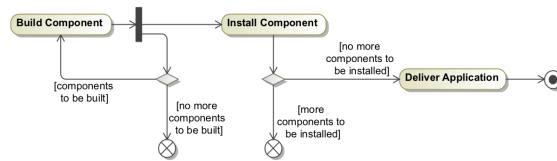


# Flow Final Node

The Flow Final Node terminates a flow and destroys all tokens that arrive at it. It has no effect on other flows in the activity.



Example of flow final node element notation

## Related Pages

- [Note](#)
- [Formatting symbols](#)
- [Specification window](#)
- [Model Elements](#)
- [Editing property values](#)
- [Decision and Merge](#)
- [Model Merge](#)
- [Activity diagram](#)