


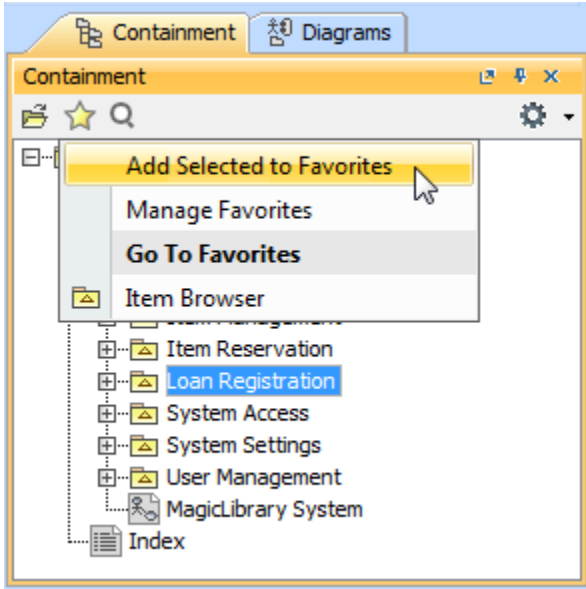
Adding, removing, and changing order of favorites

There are a few ways of adding an element to favorites:

- By using the **Add Selected to Favorites** command from the **Favorites** menu. This way is especially handy for the quick addition to favorites.
- By using the **Manage Favorites** dialog. Choose this way, when you need to add and then perform another manipulations with favorites.

To quickly add an element to favorites

1. Select the element in the Model Browser and click  on the toolbar of the open tab.



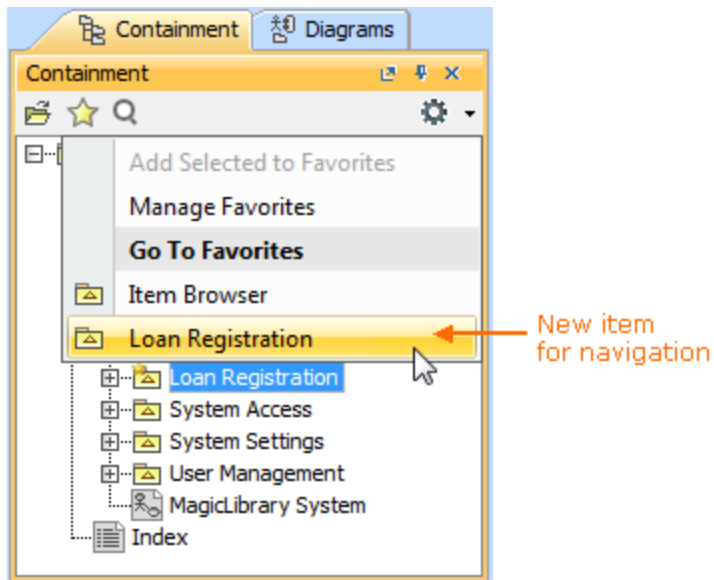
2. Click **Add Selected to Favorites** on the menu.

To add an element to favorites in the **Manage Favorites** dialog

1. Open the **Manage Favorites** dialog.
2. In the **Manage Favorites** dialog, select the element and click the  button, which is between two lists of the dialog. The element appears in the list of favorites.
3. Click **OK** to confirm the addition and close the dialog.


Once the element is added to favorites, the following changes occur in your project:

- The element becomes marked as favorite in all the trees and lists of the model.
- You can easily navigate to the element in the Model Browser. The element name is added to the **Go To Favorites** command group on the Favorites menu that opens in the Model Browser.



To remove an element from favorites

1. Open the **Manage Favorites** dialog.

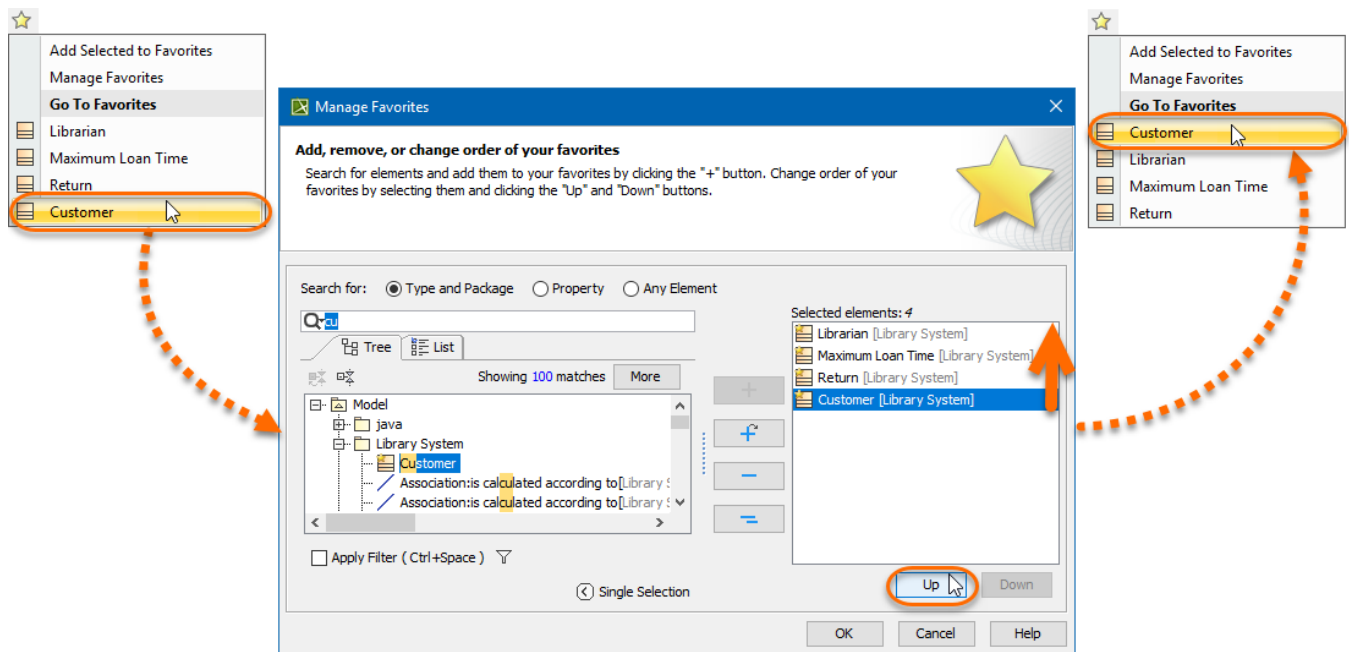
2. In the list of favorites (on the right side of the dialog), click the element you need to remove and then click  the button.
3. Click **OK** to confirm the removal and close the dialog.

Once the element is removed from favorites, it is no longer appropriately marked. Commands for navigation to the element and for searching in it are no longer on the Favorites menu.

The following procedure describes how to change the order of favorite elements on the Favorites menu. To change the order of favorites on the Favorites menu, you need to make appropriate order changes in the list of favorites on the **Manage Favorites** dialog.

To change the order of favorites

1. Open the **Manage Favorites** dialog.
2. In the list of favorites (on the right side of the dialog), click an element, whose order on the Favorites menu you need to change and then do either:
 - If you need to move the element up, click the **Up** button. Click again, if you need to move the element up by one more position and so on.
 - If you need to move the element down, click the **Down** button. Click again, if you need to move the element down by one more position and so on.
3. Click **OK** to confirm the reorder and close the dialog.



Moving the element up in the Favorites menu.

Related pages

- [Favorites](#)