
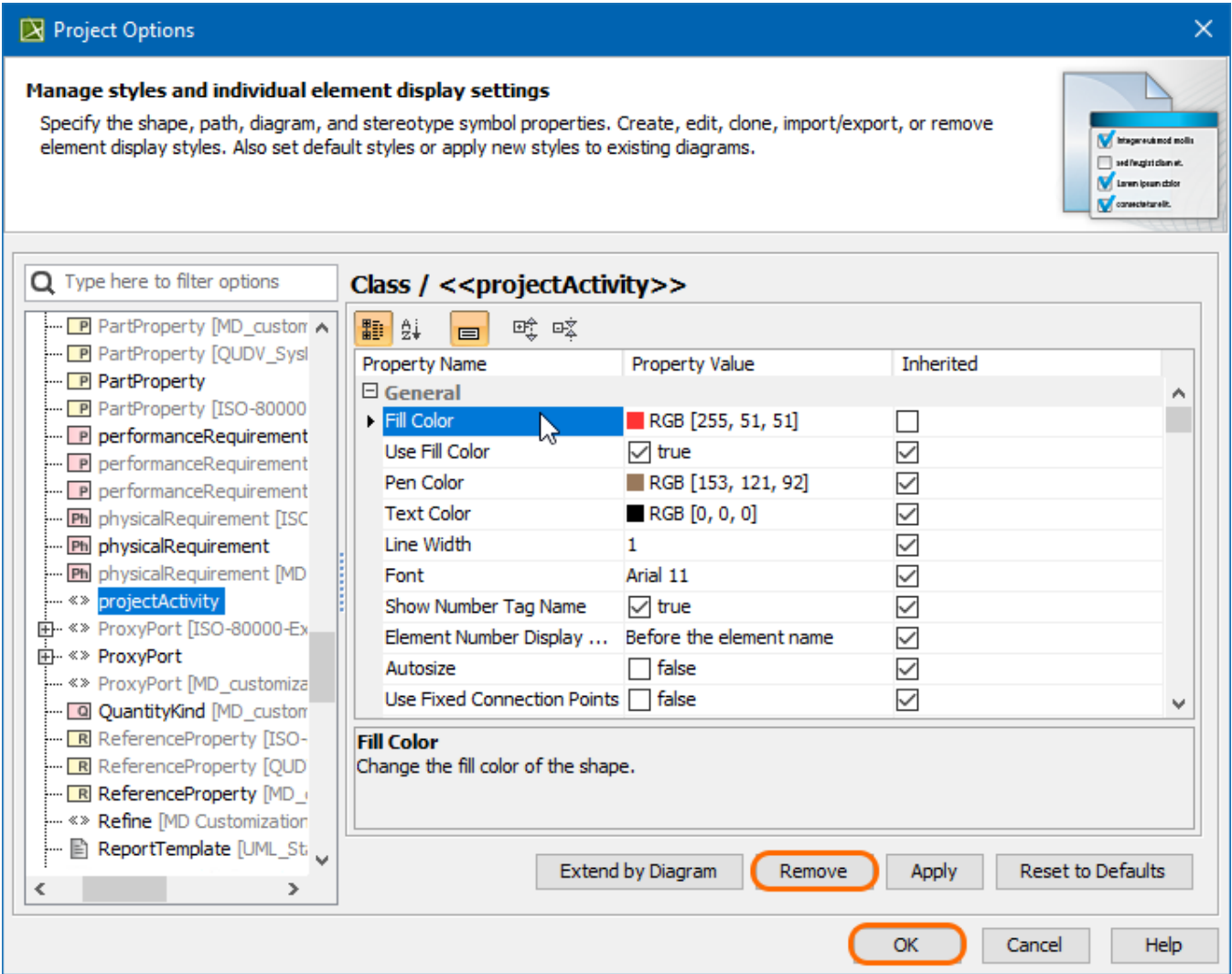


Customizing stereotype style properties


You can customize properties like colors, line styles, and line width, for your stereotypes. To be able to do it, you need to:

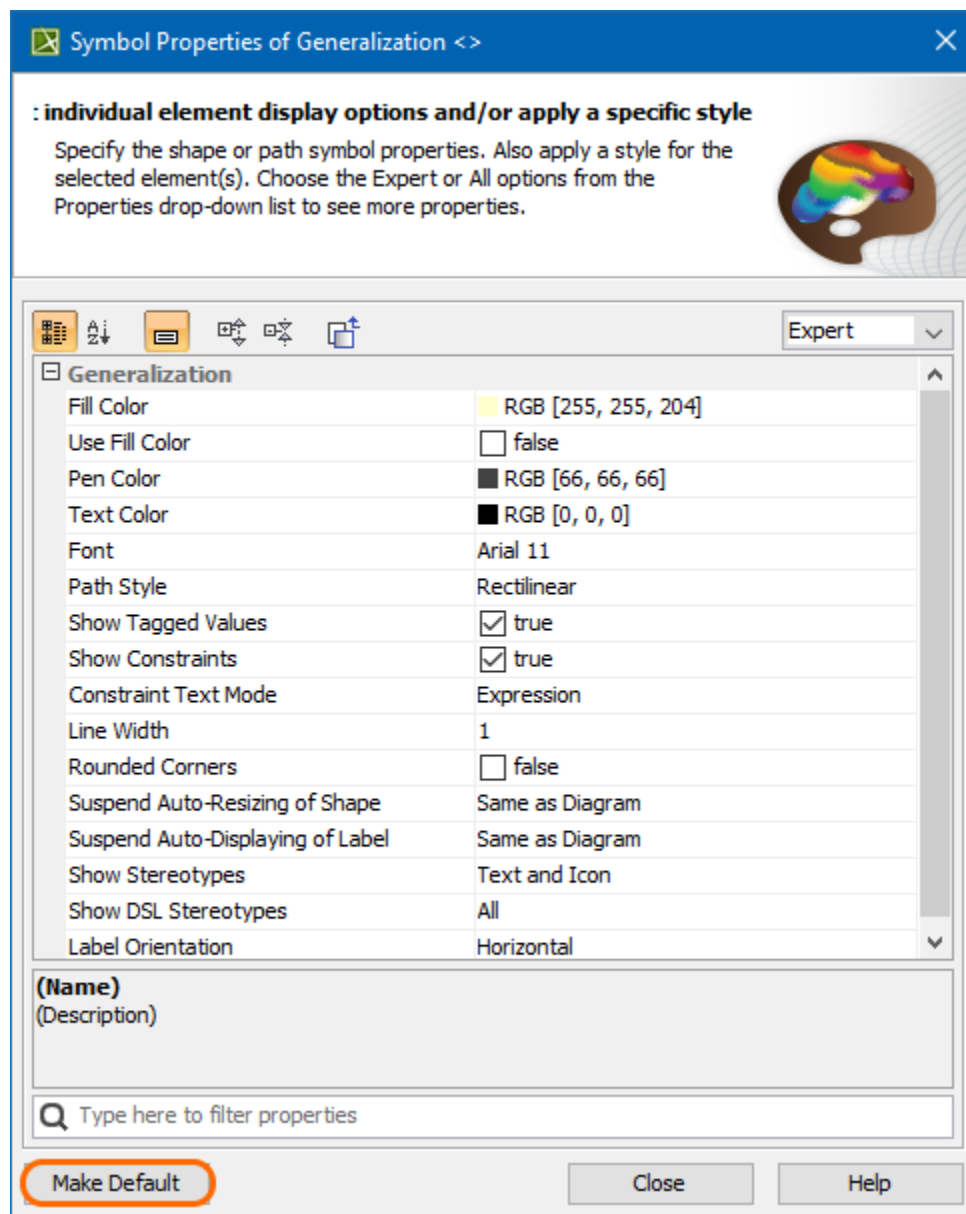
1. [Add a stereotype to the Stereotypes option group.](#)
2. Once the stereotype is added, customize stereotype style properties either via the [Project options](#) or [Symbol Properties](#) dialog.

 In the **Project Options** dialog, after specifying the stereotype style properties, click **Apply** to apply changes to existing shapes or the **OK** button to apply changes to the new shapes only.



Customizing stereotype style properties using the Project Options dialog

 In the **Symbol Properties** dialog, click **Make Default** after setting the desired style properties for your stereotype.



Customizing stereotype style properties using the Symbol Properties dialog

The best practice is to create styles for stereotypes in the Profile, loading it as a project. When a project uses the Profile, styles for stereotypes will also be loaded and used. These styles will be applied right after applying the stereotype to an element and will be used in all diagrams.

Style for stereotype in custom diagram

- The custom diagram wizard allows specifying styles for stereotyped elements.