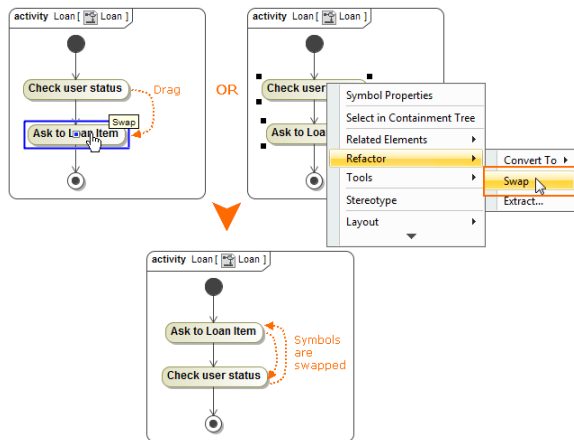


# Swapping

Swapping allows counter-change symbols with each other on the diagram.



## Related pages

- [Refactoring](#)
- [Working with model elements](#)

You can swap the symbols in the following diagrams:

- In the Activity diagram, you can swap actions, merge or decision nodes, join or fork nodes with each other, if the symbols are connected through control flow.
- In the State diagram, you can swap states or pseudo states (initial state, deep history, join, fork, junction, choice, entry point, etc.) with each other, if symbols are connected through transition.

To swap elements, do one of the following

- Drag one shape onto another.



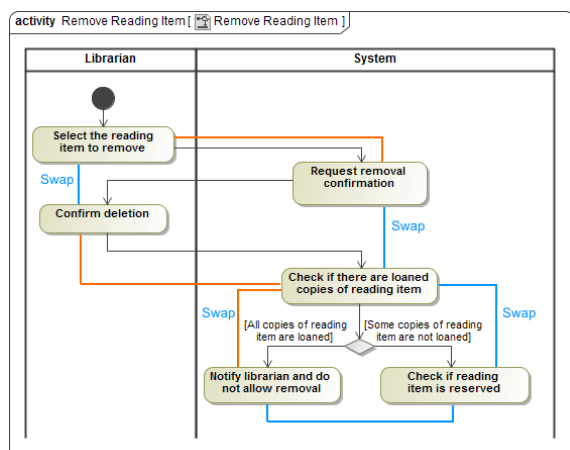
Swap does not work when dragged shape can be added into the target shape (or in other words, can be added as a child).

- On the diagram, select the two shapes that you want to swap, right-click, and from the shortcut menu, select **Refactor > Swap**.



- Swapping does not work when symbols have different parents.
- If you cannot swap within a Teamwork Cloud project, make sure you have the right to edit the model of this project and then try to lock for edit this diagram.

In the following example, you can see the cases when you can swap the elements and the cases when you cannot swap the elements.



Rule	Example
You <b>can</b> swap the elements that are in the same branch	<p>You <b>can</b> swap the following elements:</p> <ul style="list-style-type: none"> <li>• “Select the reading item to remove” with “Confirm deletion”</li> <li>• “Request removal confirmation” with “Check if there are loaned copies of reading item”</li> <li>• “Check if there are loaned copies of reading item” with “Notify librarian and do not allow removal”</li> <li>• “Check if there are loaned copies of reading item” with “Check if reading item is reserved”</li> </ul>
You <b>cannot</b> swap the elements that have different parents	<p>You <b>cannot</b> swap the following elements:</p> <ul style="list-style-type: none"> <li>• “Select the reading item to remove” with Request removal confirmation, because one element is in the “Librarian” partition and the other is in the “System” partition.</li> <li>• “Confirm deletion” with “Check if there are loaned copies of reading item” because one element is in the “Librarian” partition and the other is in the “System” partition.</li> </ul>
You <b>cannot</b> swap the elements that are in different branches	<p>You <b>cannot</b> swap the following elements:</p> <ul style="list-style-type: none"> <li>• “Notify librarian and do not allow removal” with “Check if reading item is reserved”.</li> </ul>