

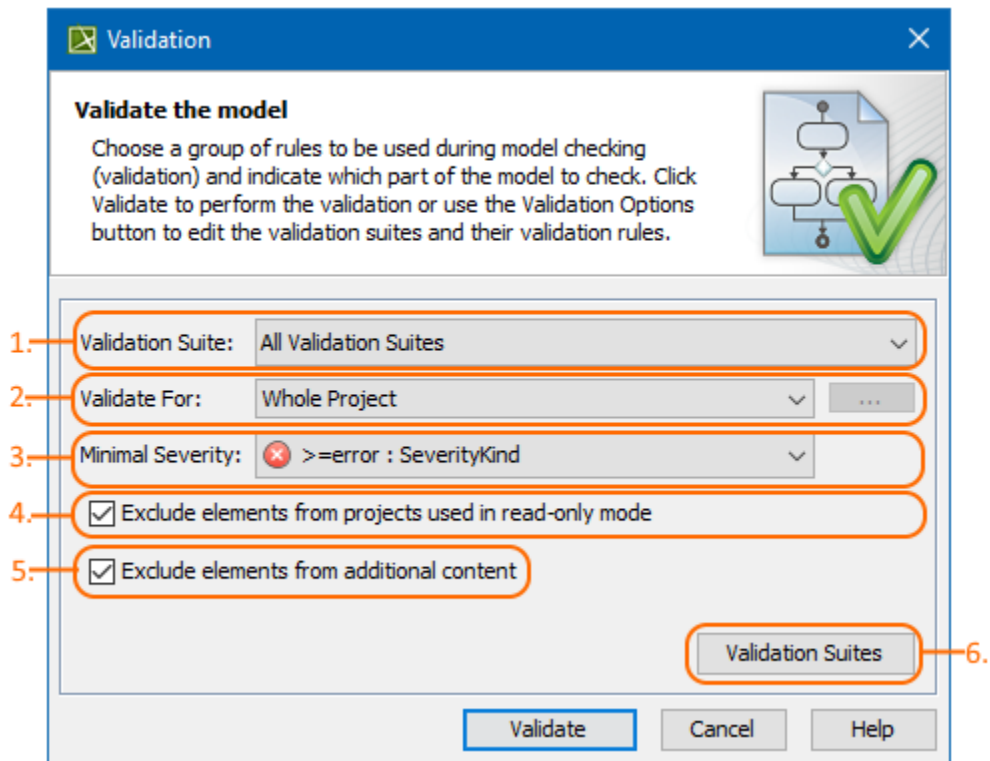
# Validation dialog

On this page

- [Introduction](#)
- [Opening the Validation dialog](#)
- [Description of Validation dialog options](#)

## Introduction


The **Validation** dialog allows you to limit the scope of the constraints to validate against your model. Since the [active validation suites](#) check your model all the time, the validation according [predefined validation suites](#) must be started by using this dialog. If you select the **All Validation Suite** as the **Validation Suite** in the **Validation** dialog, your model is validated against all [predefined](#) and [active validation suites](#) at the same time. To limit the scope of the constraints to be validated against, select a more specific validation suite, such as *Numbering Validation*. The model or its part will be validated against the selected validation suite only. The [Validation Results panel](#) shows the results, listing all elements that do not conform to some constraints (invalid elements) in the selected validation suite.




The Validation dialog. Its options (1,2,3,4,5) are described below.

## Opening the Validation dialog

To open the **Validation** dialog

1. Do one of the following:
  - On the main menu, select **Analyze > Validation > Validate**.
  - On the Validation toolbar, click .
2. In the **Validation** dialog, specify the options. [Descriptions of options >>](#)
3. Click **Validate**.  
The model or its part is validated against the selected validation suite. The results are shown in the [Validation Results panel](#).

 You can run the validation for the entire diagram, table, matrix, relation map, or elements. [Learn how to start the validation >>](#)

## Description of Validation dialog options

The **Validation** dialog consists of the following:

- The **Validation Suite** drop-down list (#1 in the image above) allows you to select a validation suite that you want to validate the model or its part against.



The list of available validation suites depends on the open project; the validation suites and validation rules are stored in the model as regular model elements.

- The **Validate For** drop-down list (#2 in the image above) allows you to choose:
  - **Whole Project** to run validation on the entire model.
  - **Validation Selection** to run validation on special packages and/or elements. Then click the ... button and select the scope for validation.



Validation is always recursive. If you select a package for validation, you do not need to select its inner elements.

- The **Minimal Severity** drop-down list (#3 in the image above) allows you to select the minimal severity level: **debug**, **info**, **warning**, **error**, **fatal**. Debug is the lowest possible severity level.
- Clear the **Exclude elements from projects used in read-only mode** check box (#4 in the image above) if you want to run validation on the elements stored in the read-only project usages.
- Clear the **Exclude elements from additional content** check box (#5 in the image above) if you want to include the content of Smart Packages while running the passive validation.
- The **Validation Suites** button (#6 in the image above) opens the [Validation Suites dialog](#).