


Selecting destination model

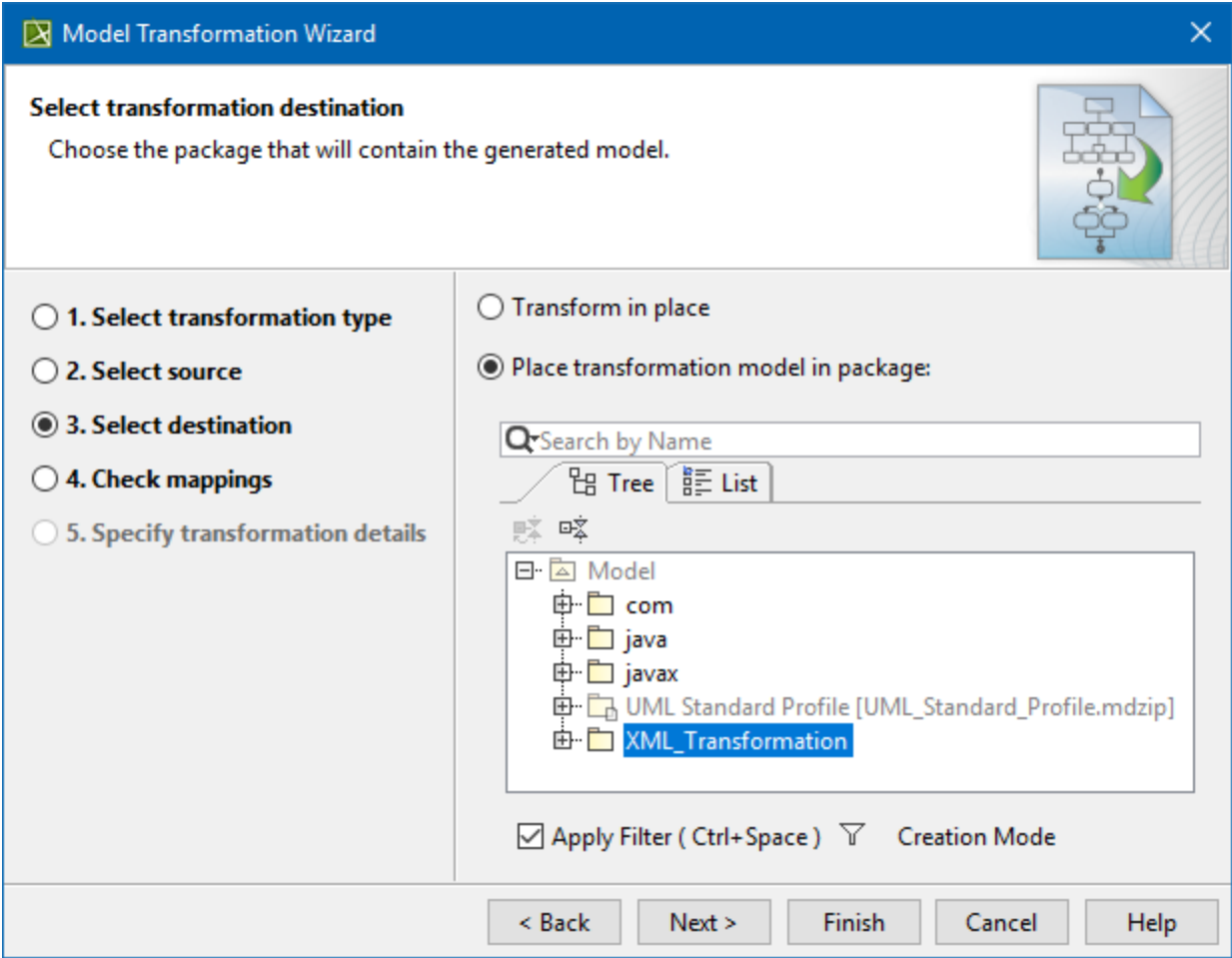
In the third step of the wizard, you can choose the package that will contain the generated model. Additionally, you can specify the following options:

Select the **Place transformation model in package** option button to specify the package into which the source will be transformed. Select an existing package or create a new one.

Select the **Transform in place** option, if you want the source model to be edited.



- If you choose the in-place transformation, the model part selected as the transformation source, will be edited directly, and you will not retain your original model. So, please, be careful with this option.
- If you choose the destination package, the source model will be copied to it and the transformation will be performed on this copy. Hence you will retain your source model and get a resulting model and traces will be established between elements in these model parts.



The following operations are available in the **Select source** and **Select destination** steps:

Button	Function
Back	Return to the previous dialog box.
Next	Proceed to the next step (in this case, Select type mappings).
Finish	Finish the transformation configuration. All other options will be set by default. The Model Transformations Wizard exits and transformation results appear in the project.