

# Working with Automatic Instantiation Wizard

Following all steps of the **Automatic Instantiation** wizard, you can create several different sets of instances. You can add each set in a different package and even display on the newly created diagrams.



After finishing the wizard, a very large number of instance specifications can be created. That depends on the size of your system. That is why we strongly recommend to select a new package wherein all created instance specifications will be stored.

## On this Page

- [Step #1. Parts selection](#)
- [Step #2. Package Selection](#)
- [Step #3. Diagram Creation \(Optional\)](#)

## Related pages

- [Automatic Instantiation Wizard Case Study](#)
- [Automatic Instantiation wizard in SysML Plugin](#)

## Step #1. Parts selection

In this step, you can see all the available instance specification values (parts) of your selected element. At this point, you can select which parts or properties to instantiate, create or select values for parts and properties, as well as add or remove parallel parts.

Parts are displayed if the multiplicity is greater than 1. The number of parts displayed depends on the multiplicity.

- If the multiplicity is a particular value, for example 2, then you will see 2 parts displayed in the **Automatic Instantiation** wizard. Also in this case, you will not be able to add parallel parts or remove existing parallel parts.
- If the multiplicity is defined as an interval (for example, 0..\*, 1..10, 1..\* ) or \*, only one part will be created by default. If you need more parts, you can create them by pressing **Insert** or selecting **Add parallel part** from the selected property's shortcut menu.
- If the multiplicity is 1, parts will not be created.

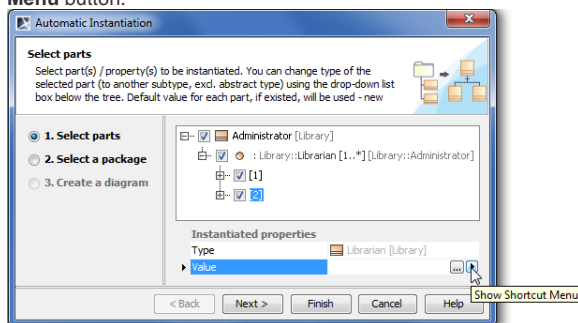
The parts and properties are displayed with the suggested types and values. In this step of the **wizard**, you can change them. You can also change the type for the part only in that case, if there is an available sub element for that part in your model (see the Case study).

To select a value for a part

1. Select a part for which you want to add a value.
2. In **Instantiated properties**, click a **Value** specification cell and then click the ... button.
3. The **Select Instance Specification** dialog opens.
4. In the opened dialog, select the instance specification you want to add for the selected part.
5. Click the **OK** button.

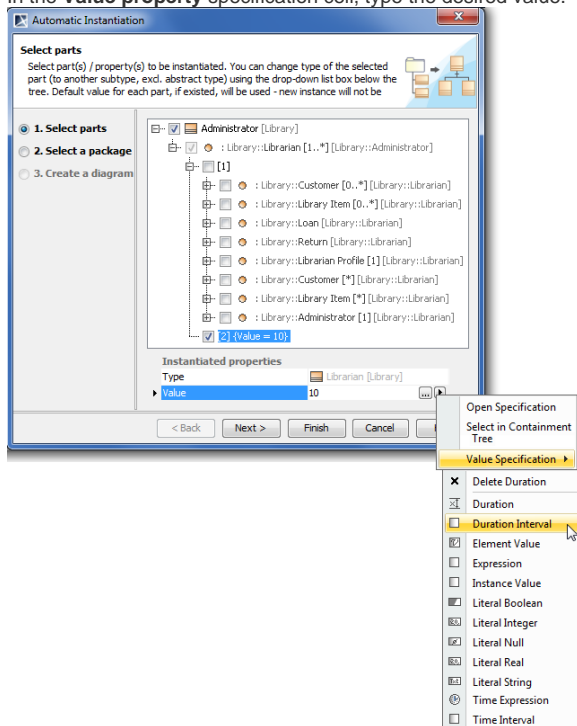
To create a value for a part

1. Select a part for which you want to create a value.
2. In **Instantiated properties**, click the **Value** specification cell and then click the **Show Shortcut Menu** button.



3. In the opened shortcut menu, point to the **Value Specification** and then select one of the available value types.

4. In the **Value property** specification cell, type the desired value.



## Step #2. Package Selection

In this step, you can select the existing package and either create a new one by clicking the **Create** button, or copy the selected package with all its content by clicking the **Clone** button.

After this step, if you do not wish to display your created instance specifications, click the **Finish** button.

## Step #3. Diagram Creation (Optional)

In this step, you can choose whether you want to show your created instance specifications in a new diagram or not. If you do not wish to create a new diagram, you can simply skip this step.

To create a diagram using **Automatic Instantiation Wizard**

1. If you choose to create a new diagram for displaying instance specification(s), check off **Create a new diagram**.
2. If you wish to create and display links between your instance specification(s), check off **Create link between instances**.
3. Fill in the **Type diagram name** field with the appropriate name. By default the diagram name is Instance of the <element name>. For example, "Instance of the Administrator."
4. From the **Select diagram type** drop-down list, you can select one of the diagram types.
5. The final step is to select, create new, or clone an owner for your new diagram.
6. After clicking the **Finish** button, a new diagram with instance specifications is created and displayed in your project.